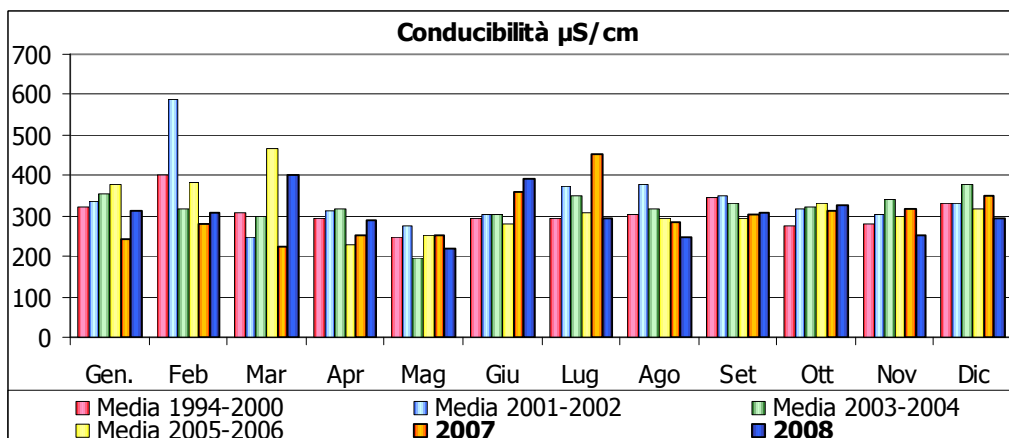
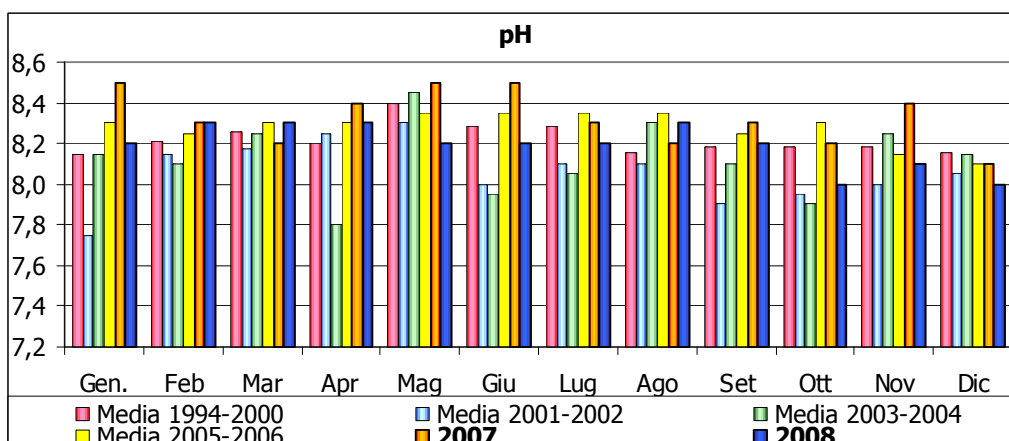
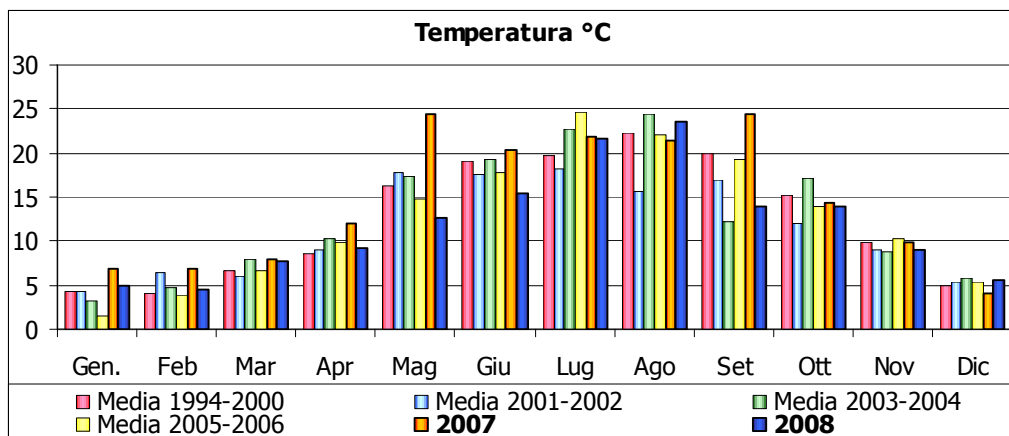


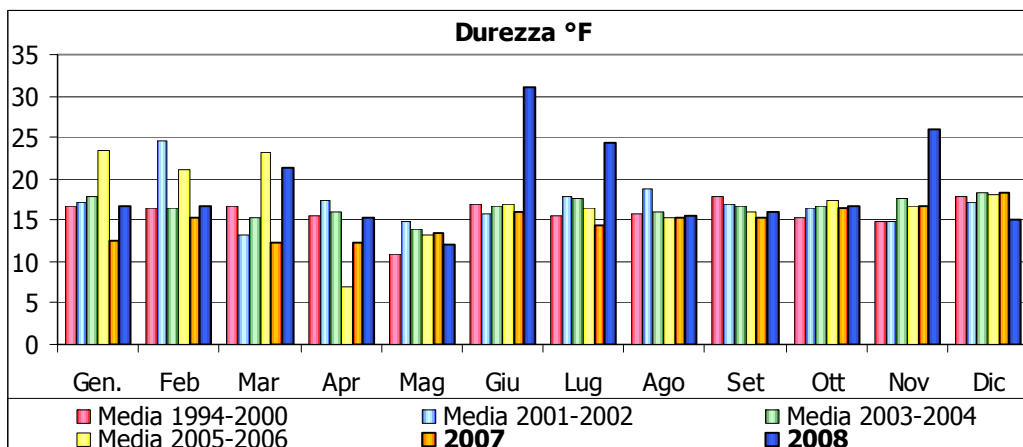
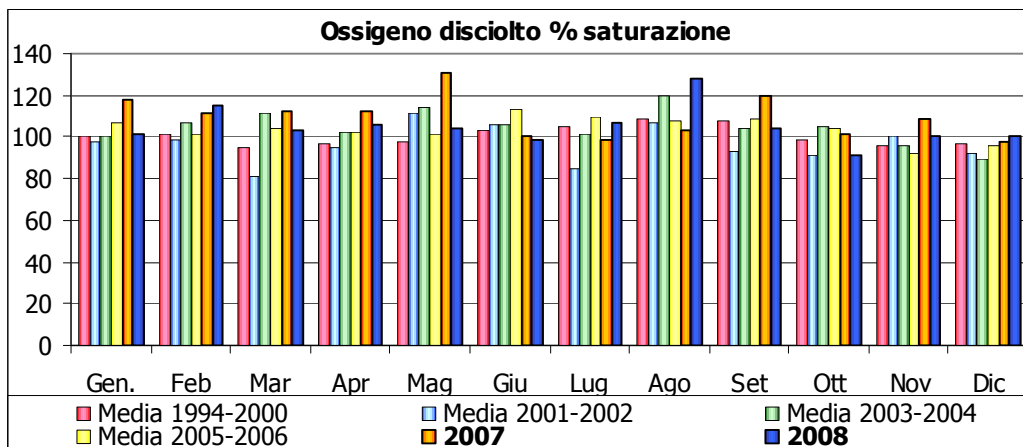
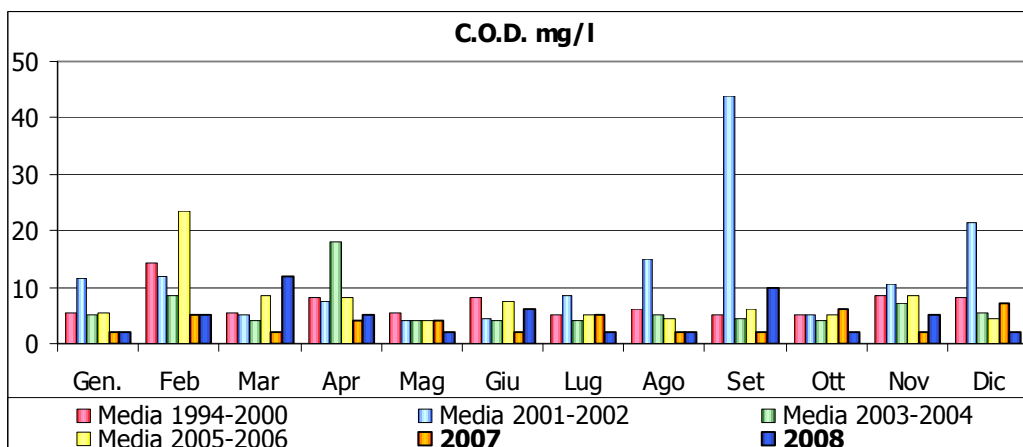
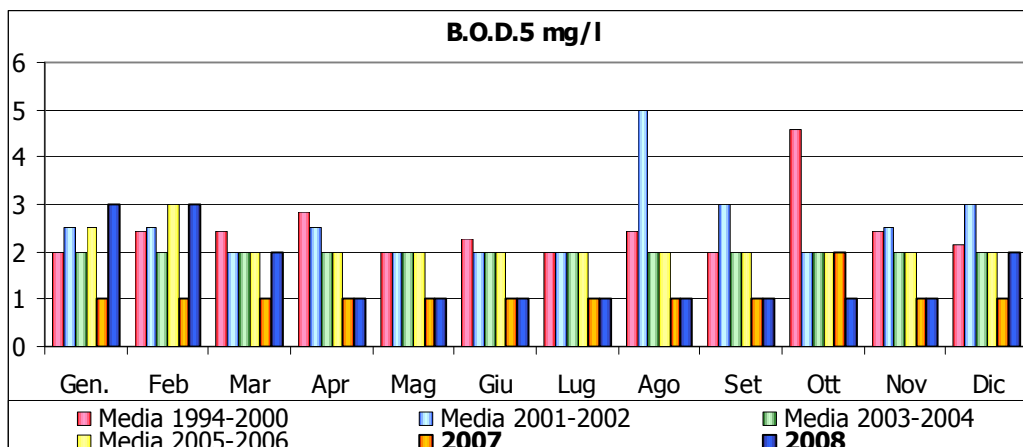
Allegato 3

**Andamenti mensili dei principali
parametri chimico-fisici-microbiologici
per singola stazione di monitoraggio
fiumi Panaro e Secchia
anni 1994 – 2008**

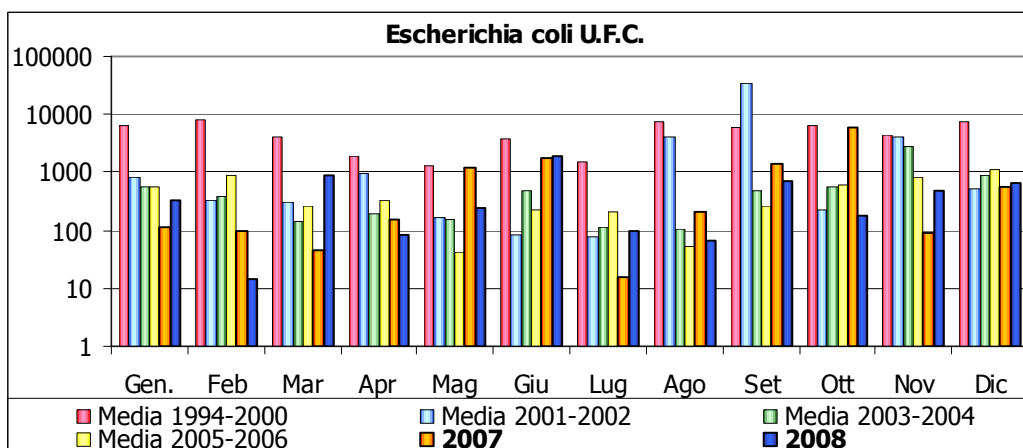
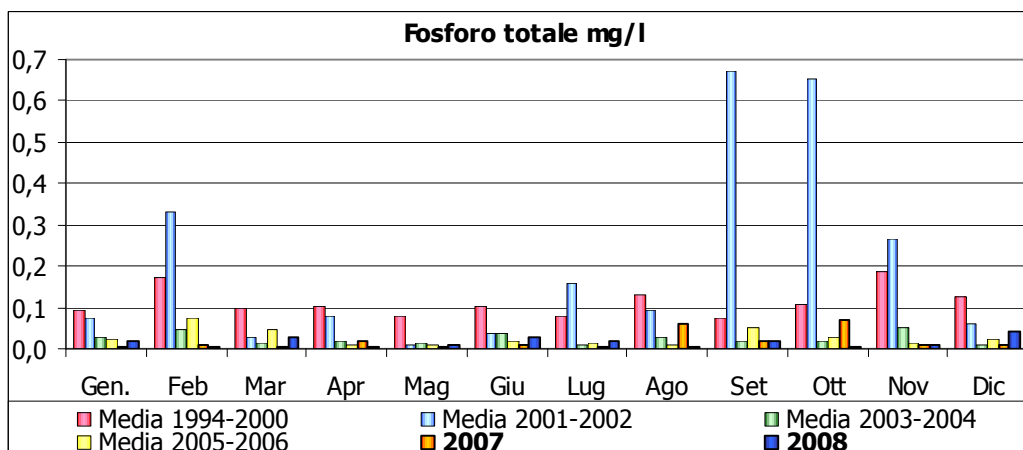
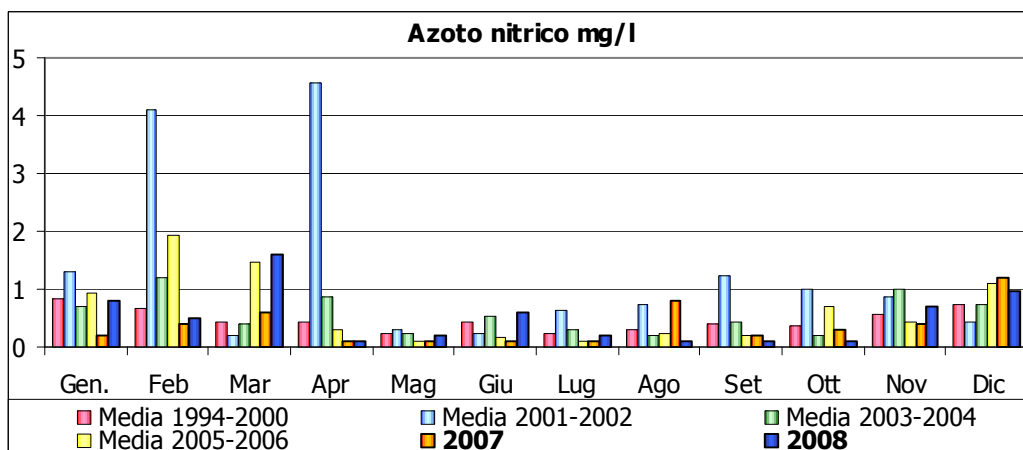
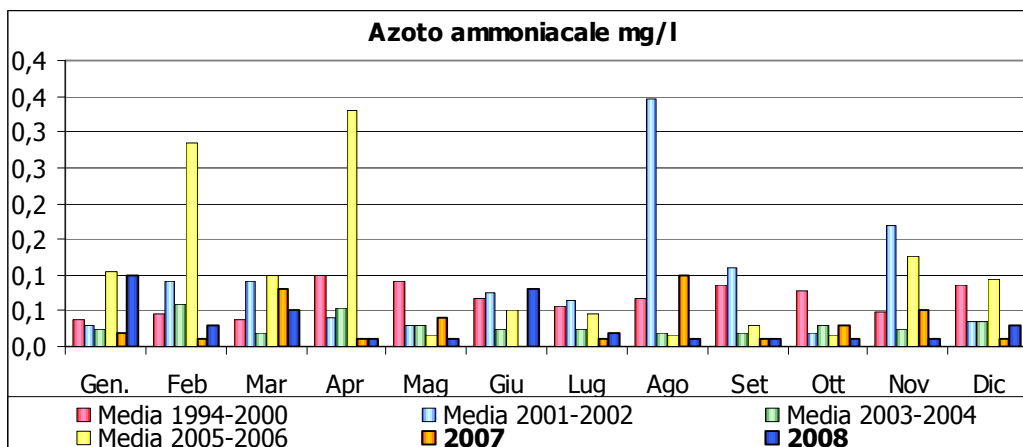
Fiume Panaro
Ponte di Marano – stazione 4



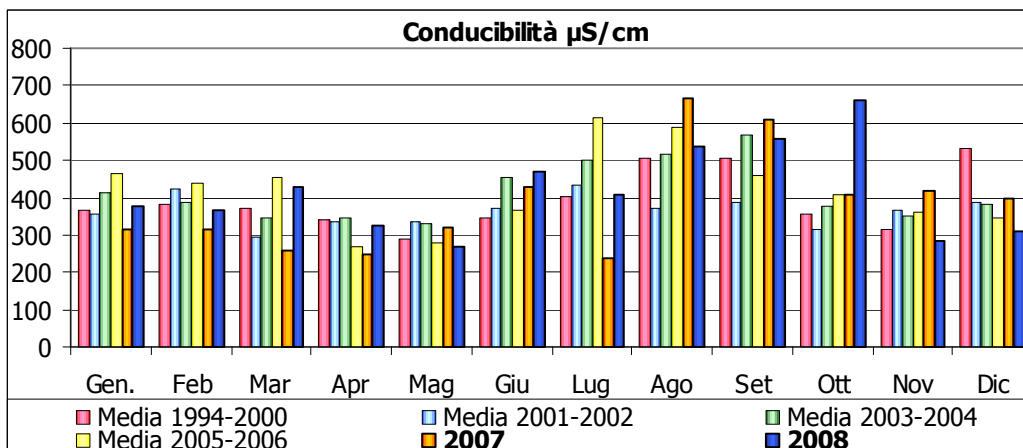
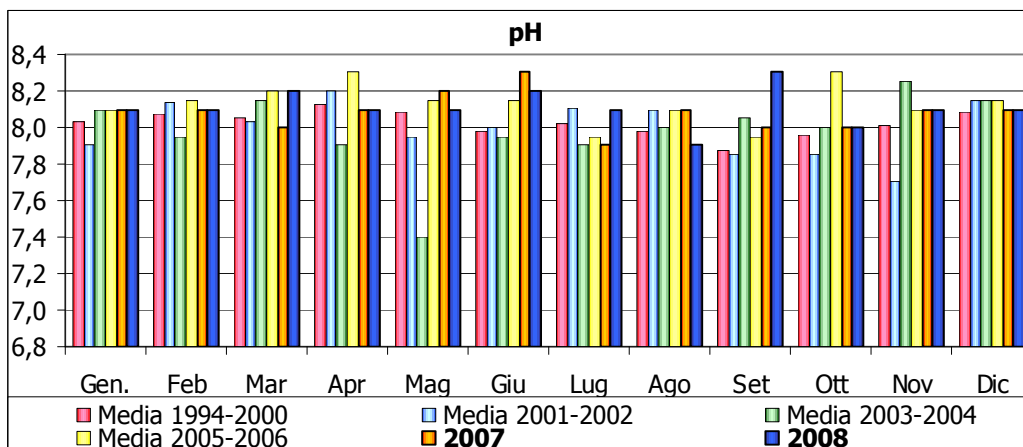
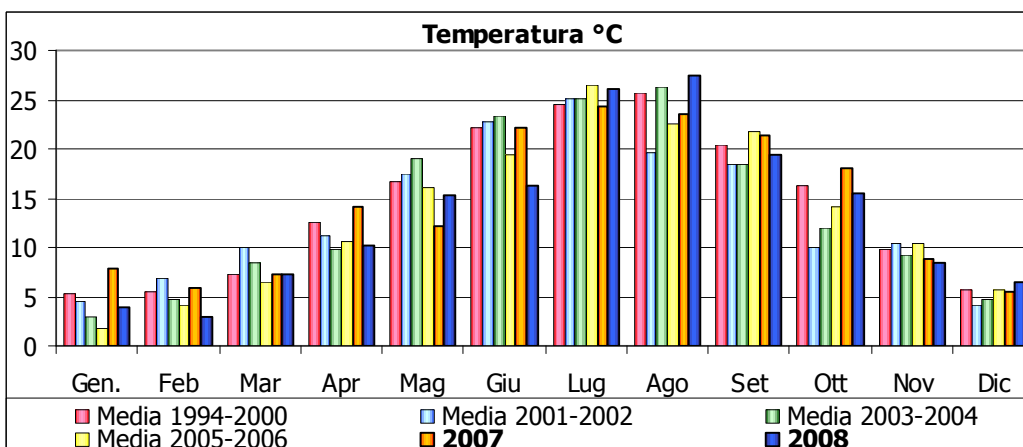
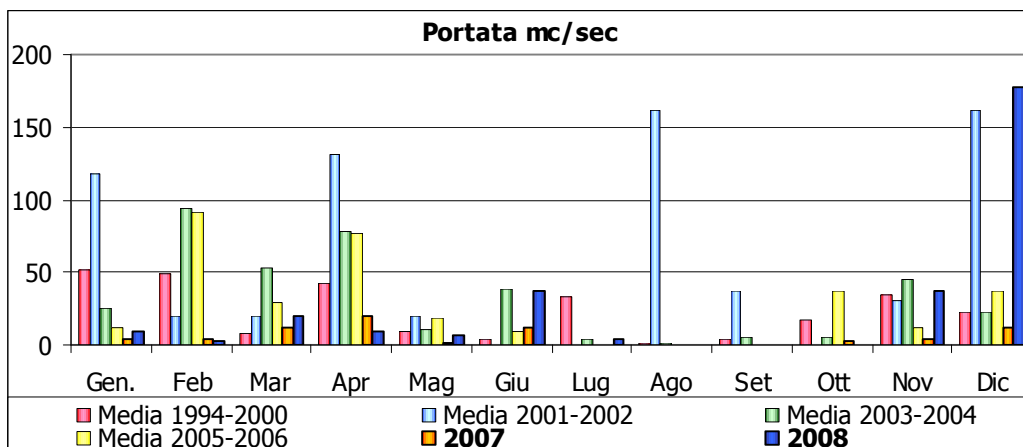
Fiume Panaro
Ponte di Marano – stazione 4



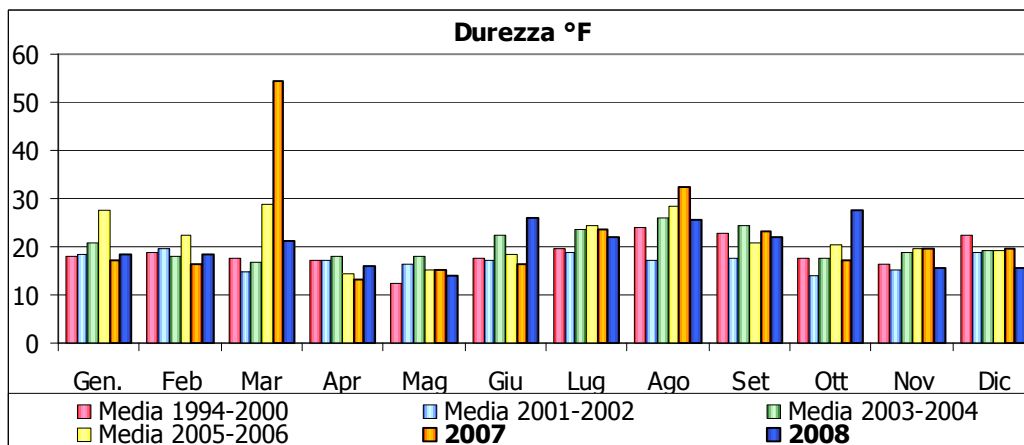
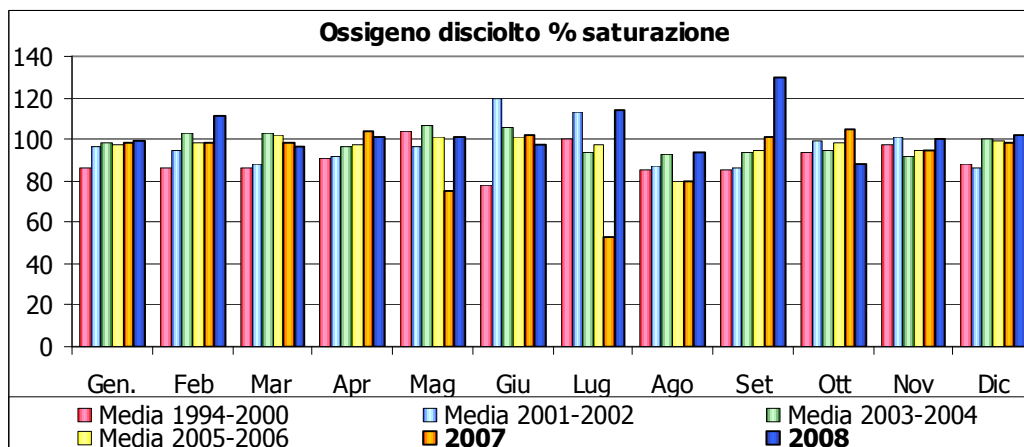
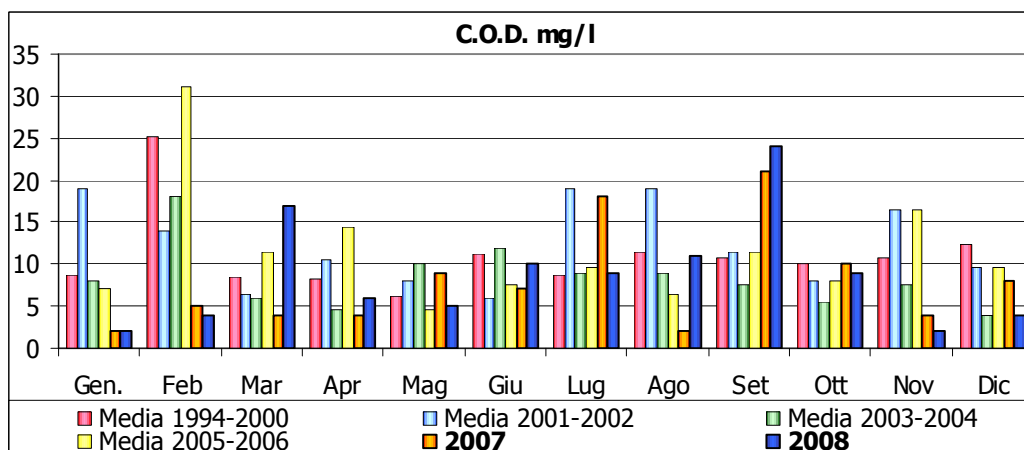
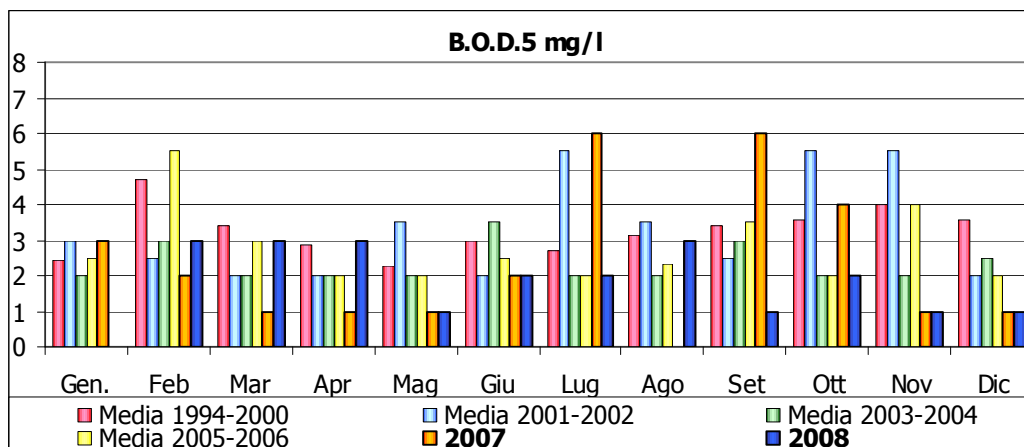
Fiume Panaro
Ponte di Marano – stazione 4



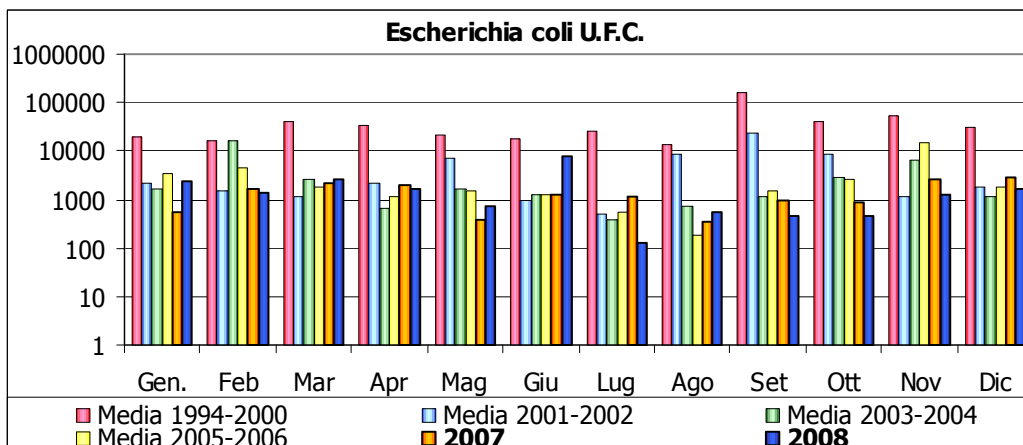
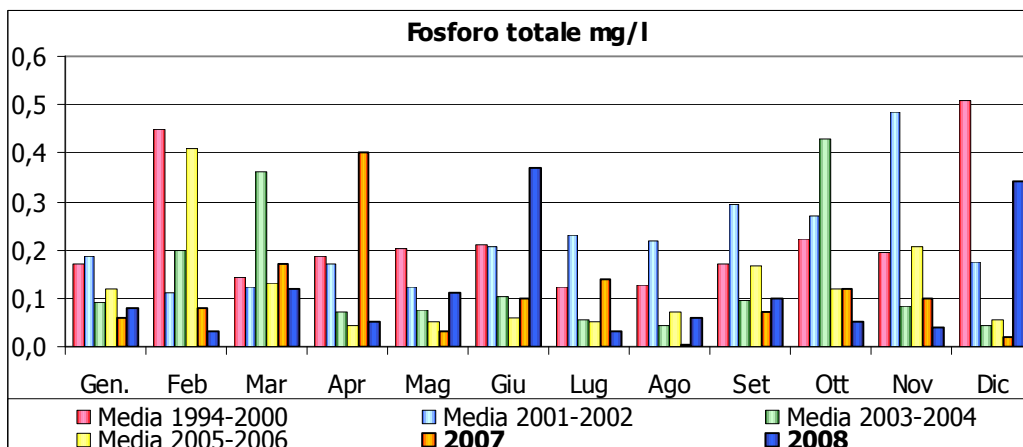
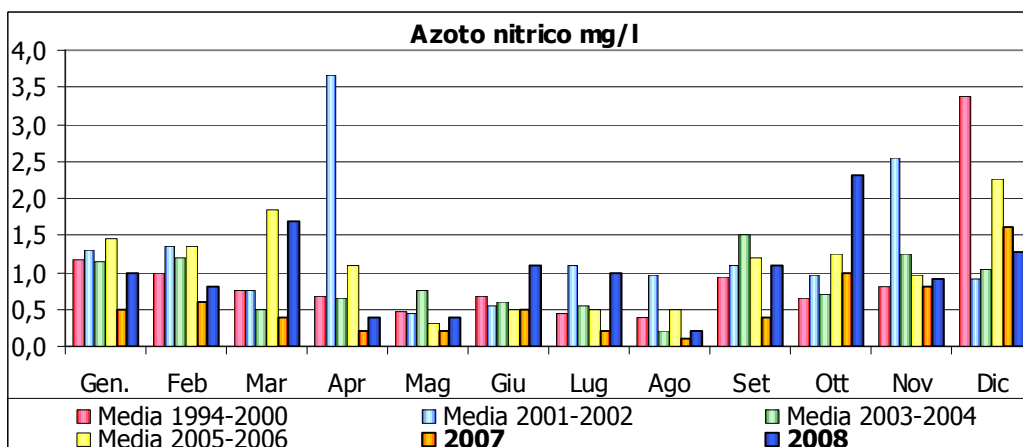
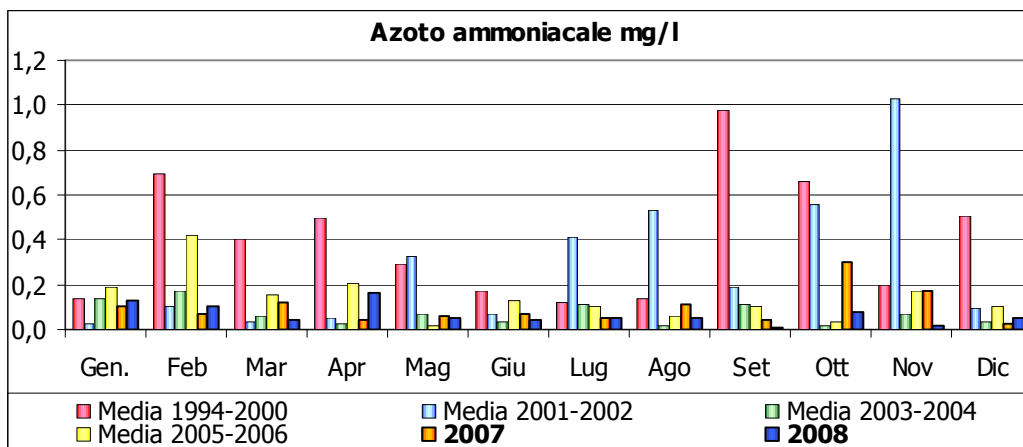
Fiume Panaro
Ponticello S. Ambrogio – stazione 6



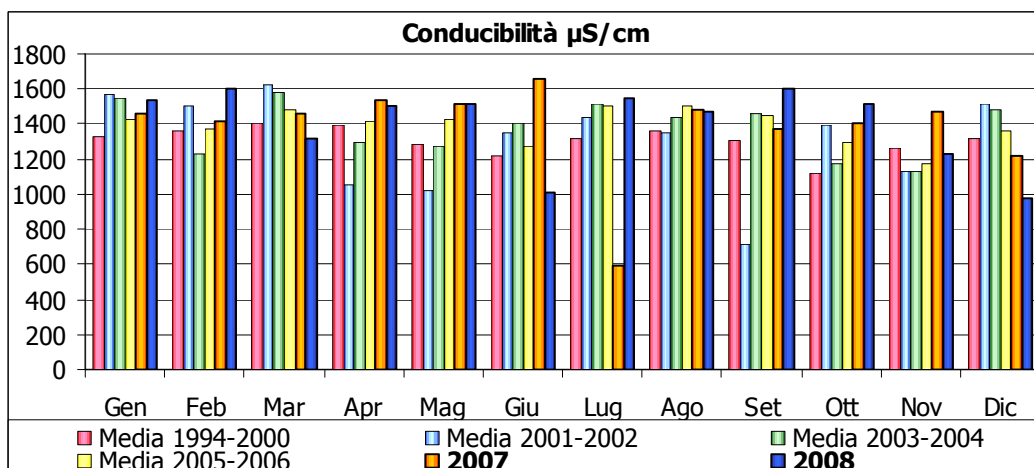
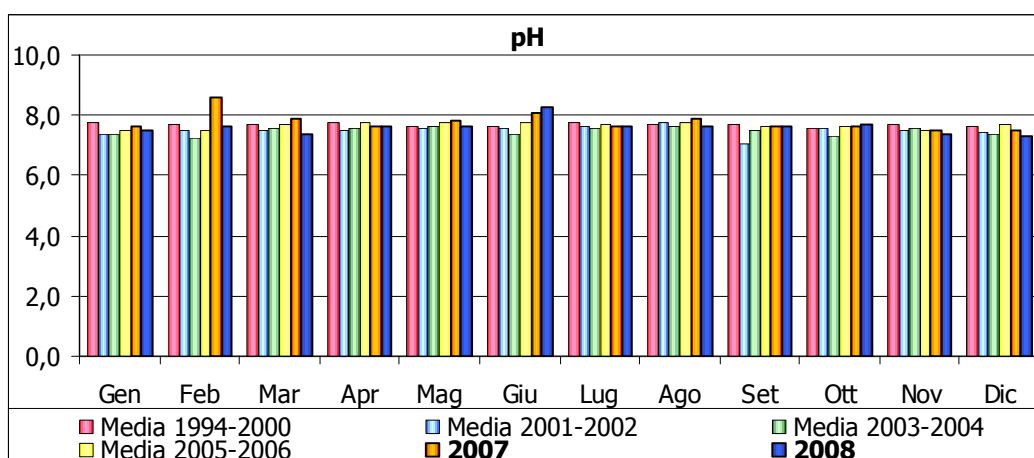
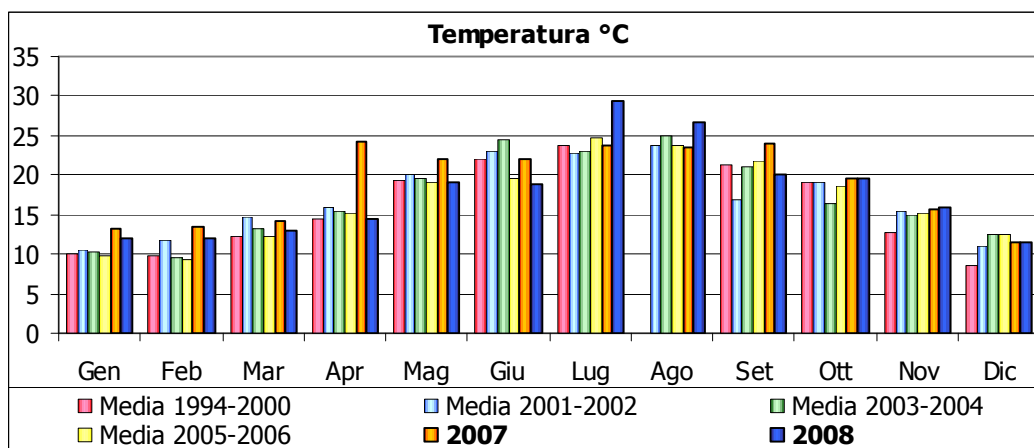
Fiume Panaro
Ponticello S. Ambrogio – stazione 6



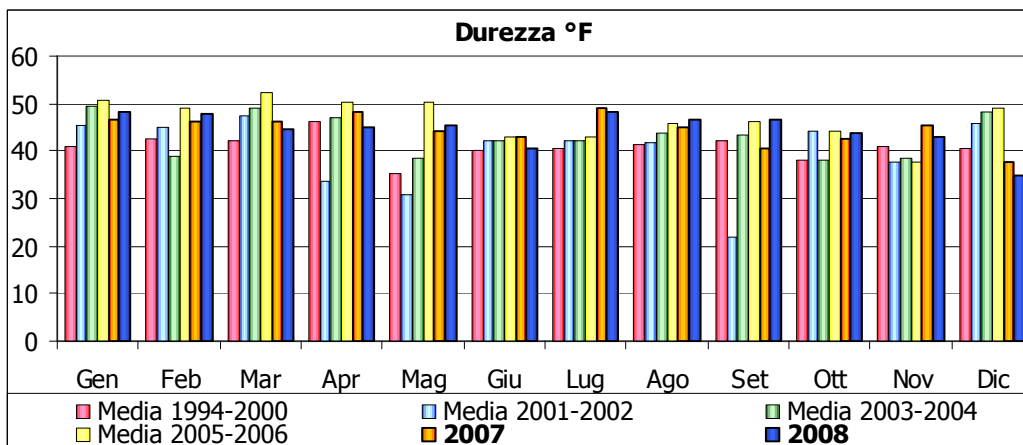
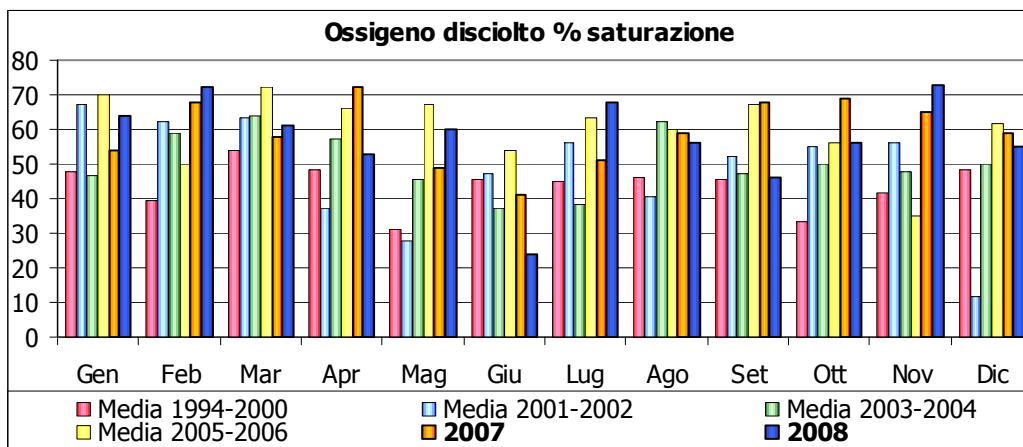
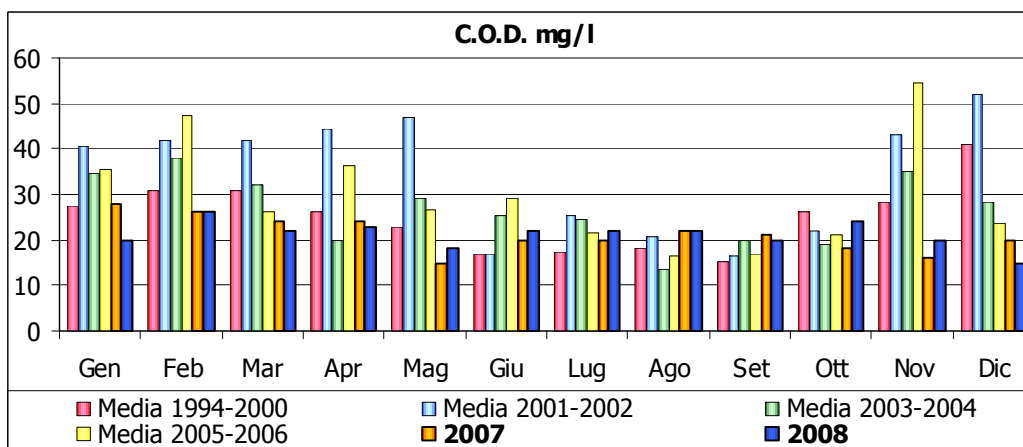
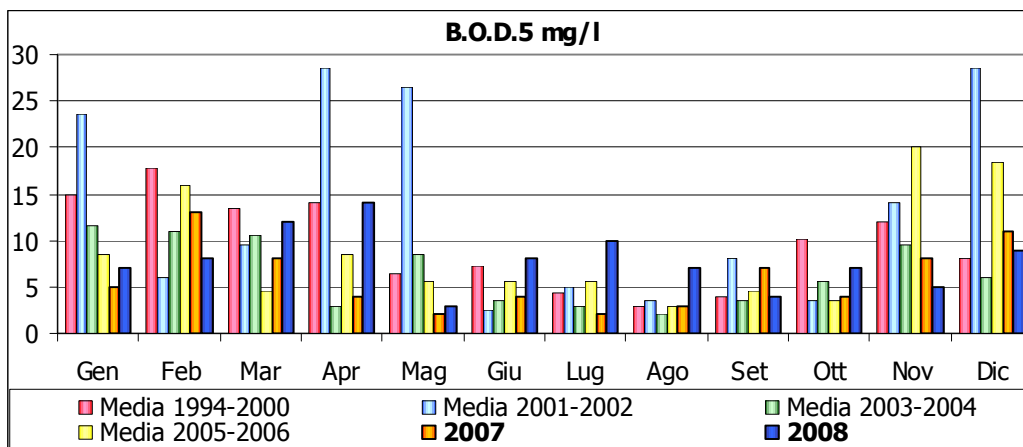
Fiume Panaro
Ponticello S. Ambrogio – stazione 6



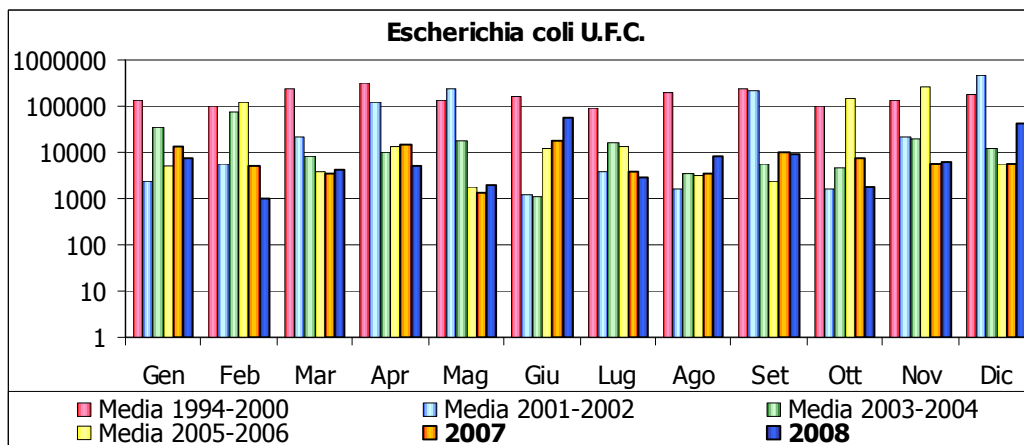
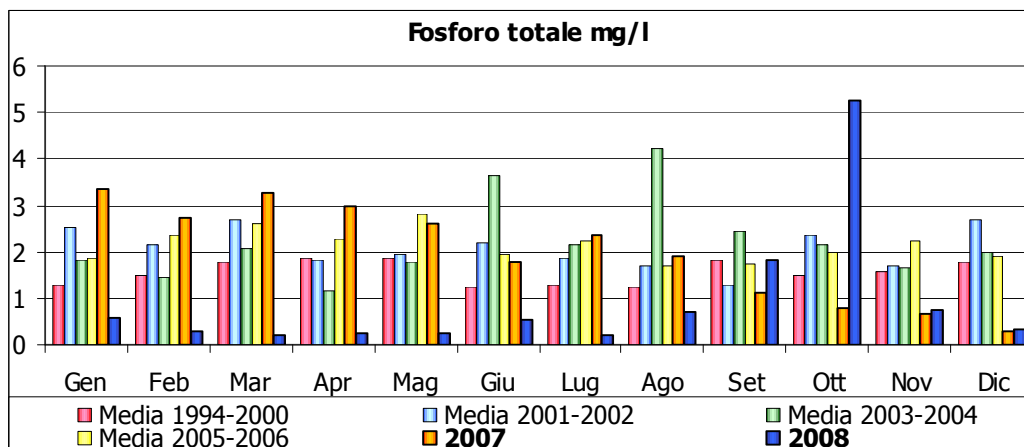
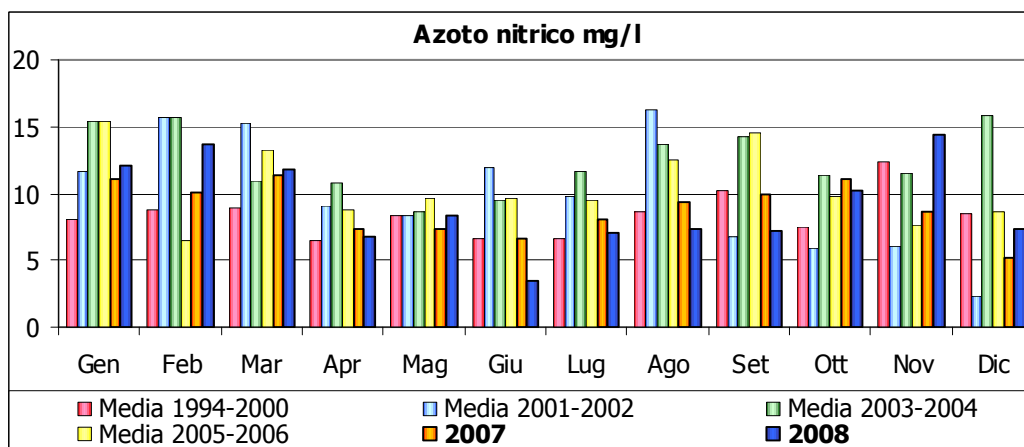
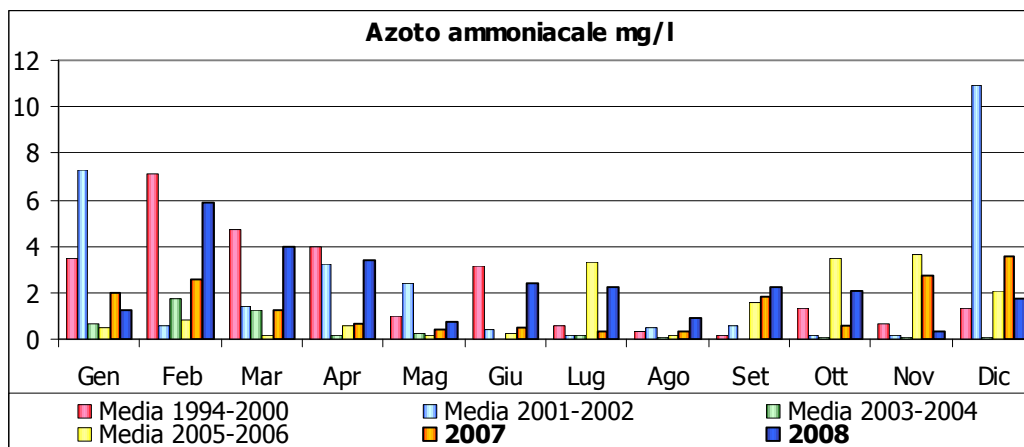
Fiume Panaro
Canale Naviglio – stazione 7



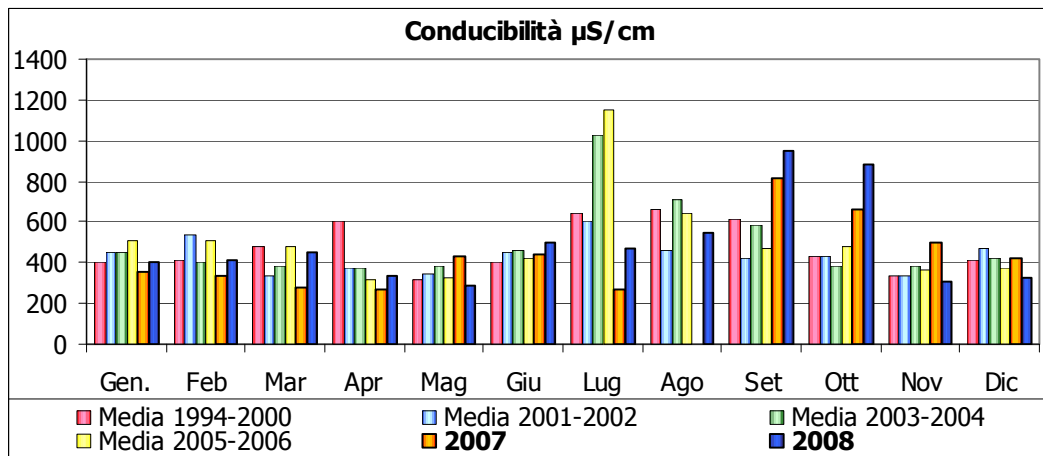
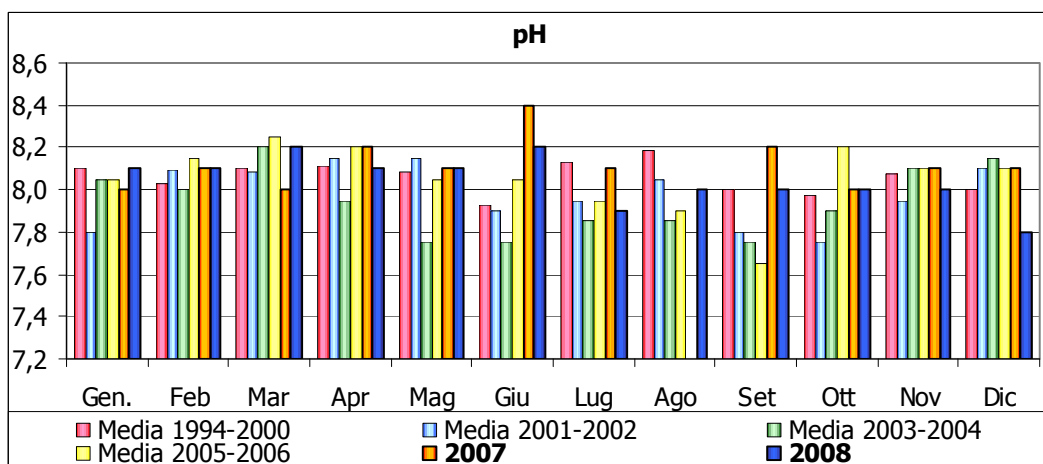
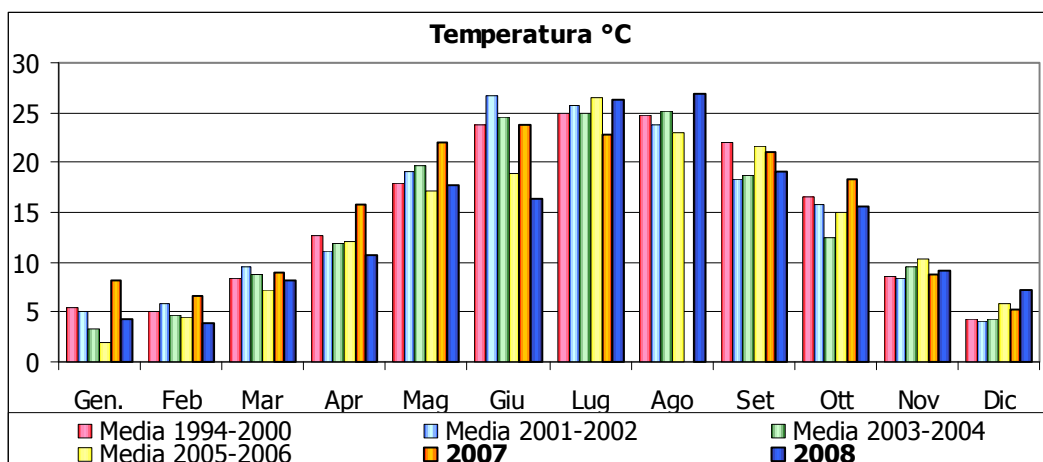
Fiume Panaro
Canale Naviglio – stazione 7



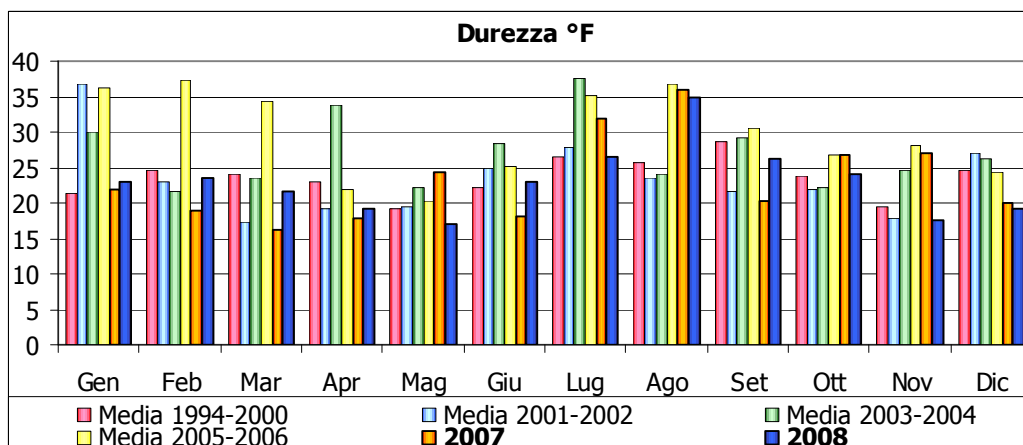
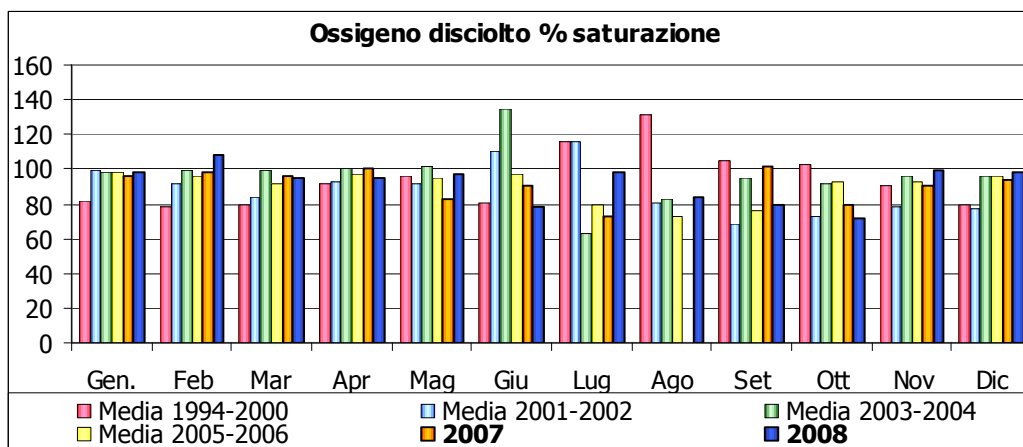
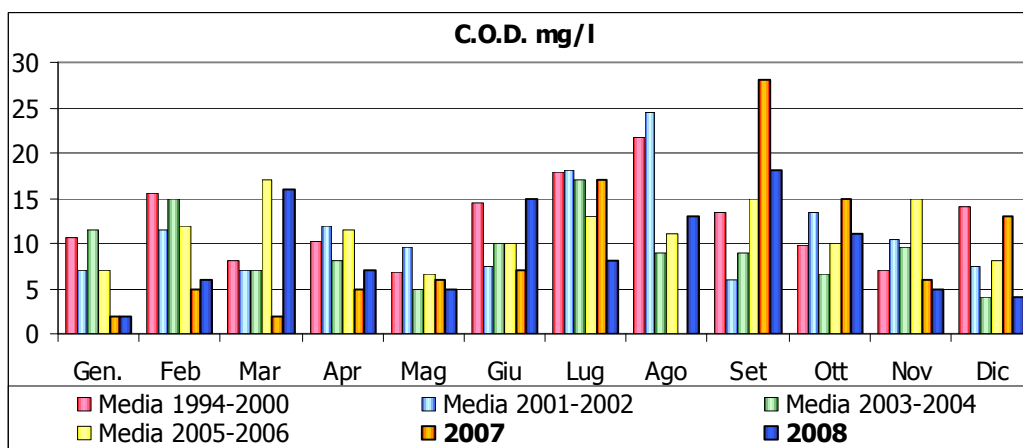
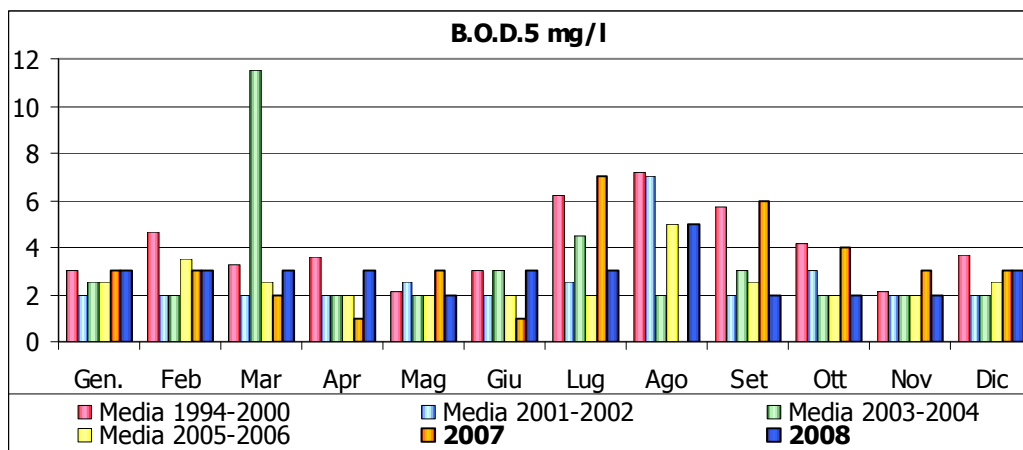
Fiume Panaro
Canale Naviglio – stazione 7



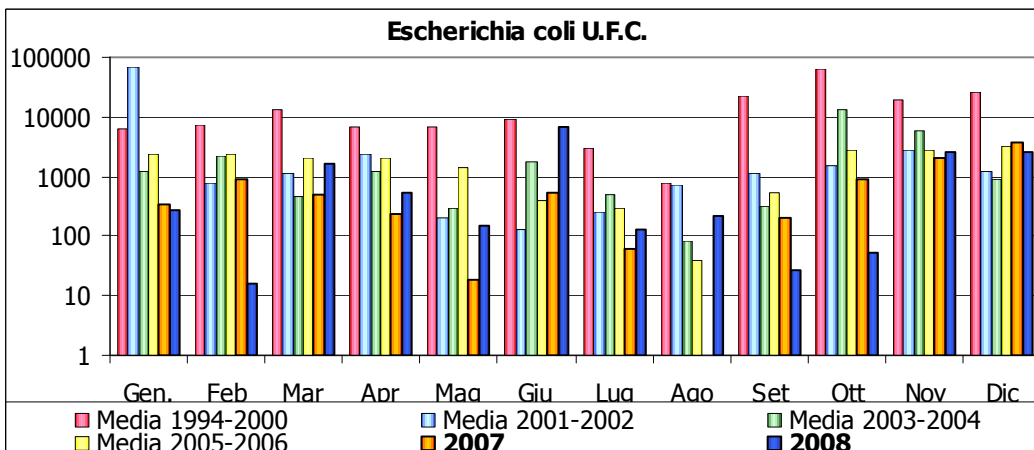
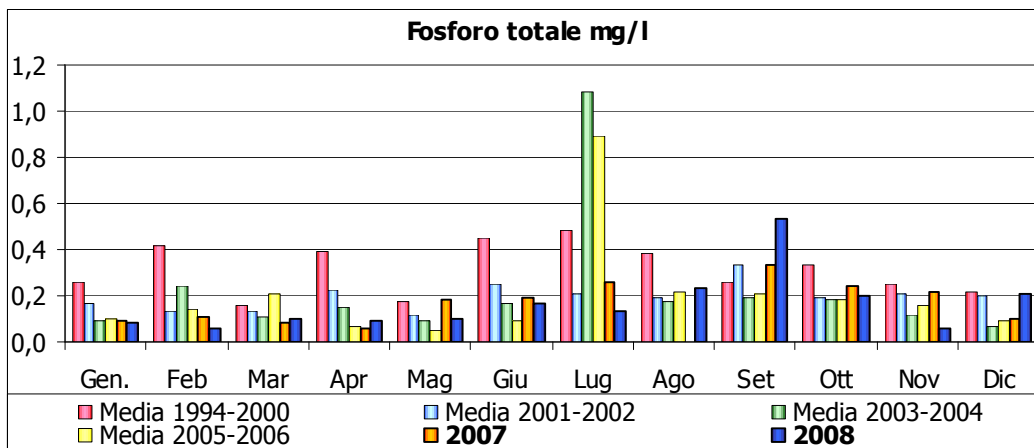
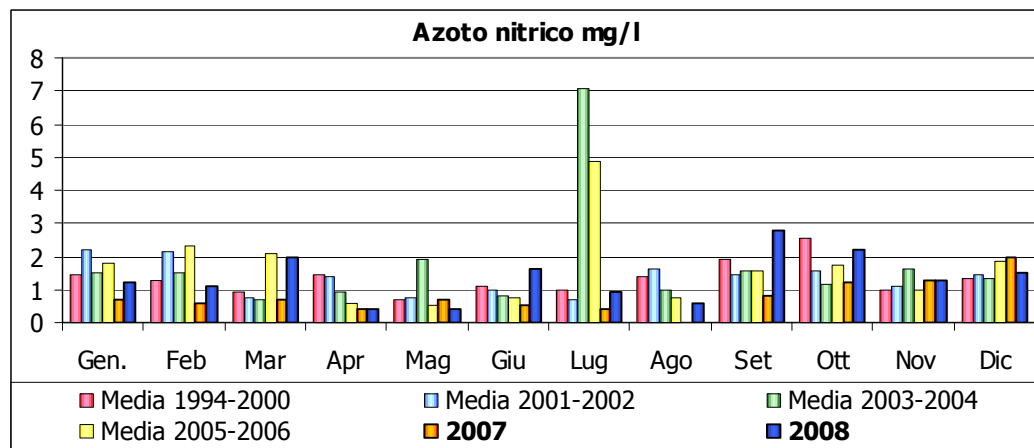
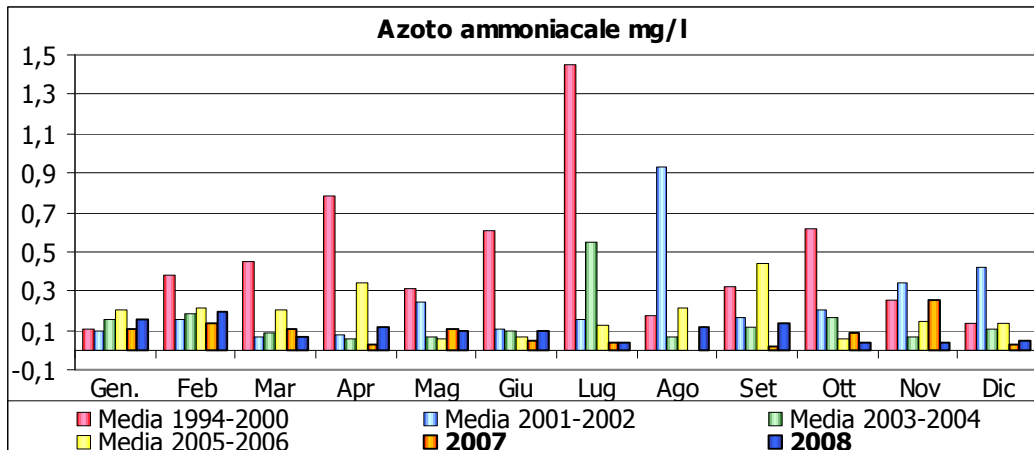
Fiume Panaro
Bomporto – stazione 8



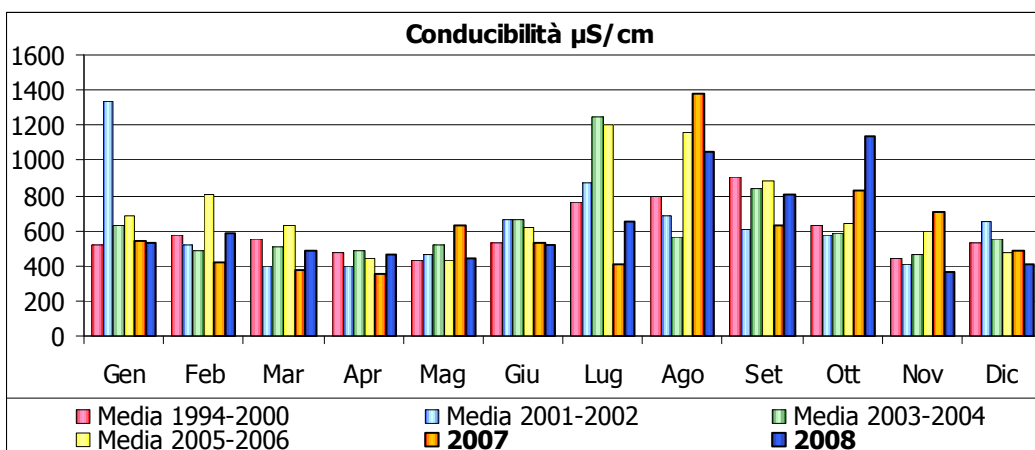
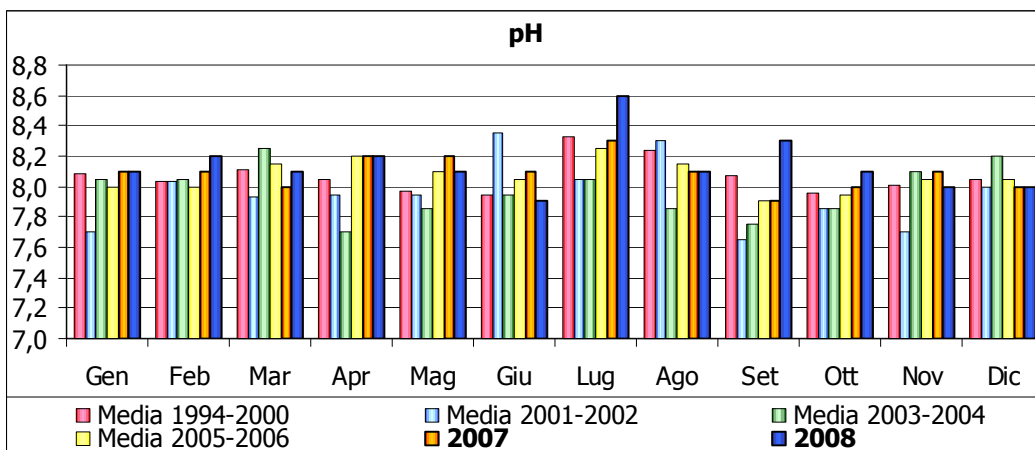
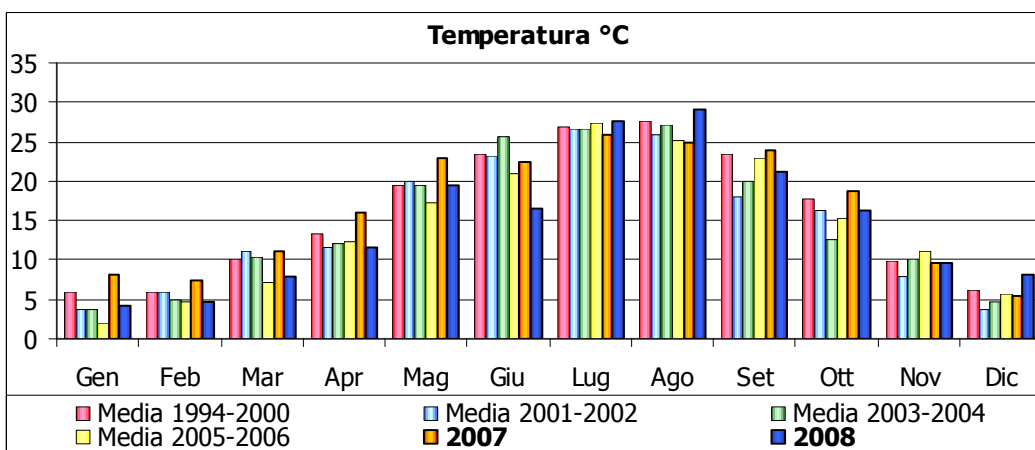
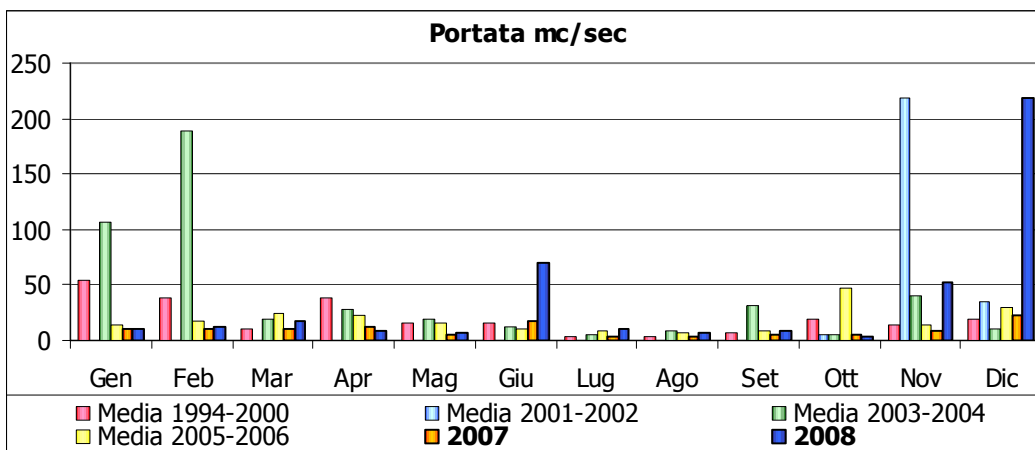
Fiume Panaro
Bomporto – stazione 8



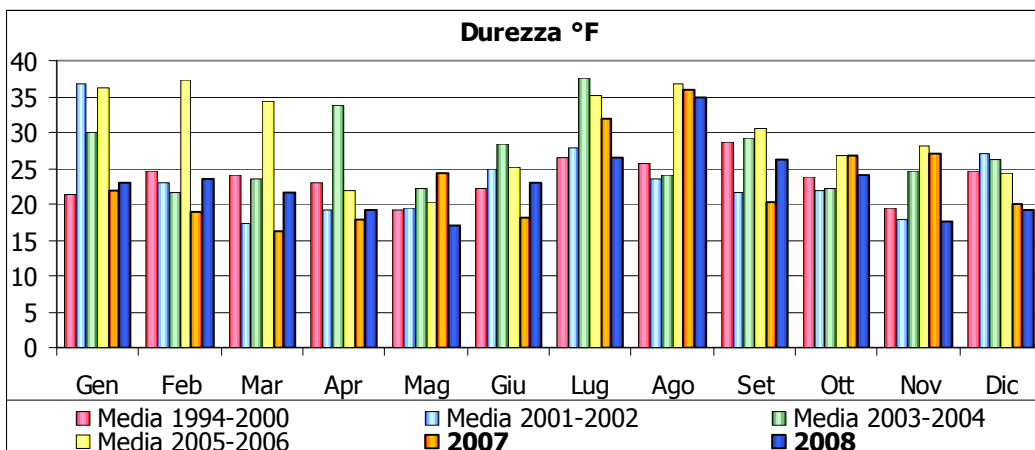
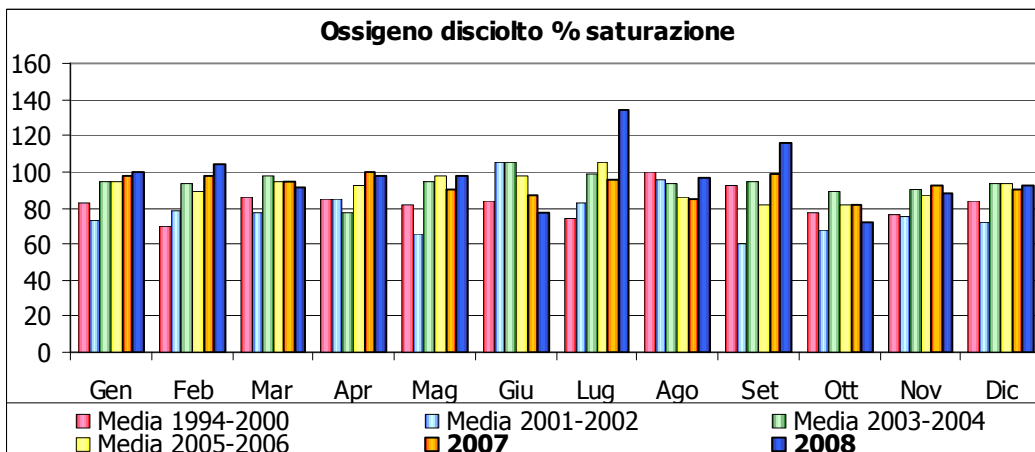
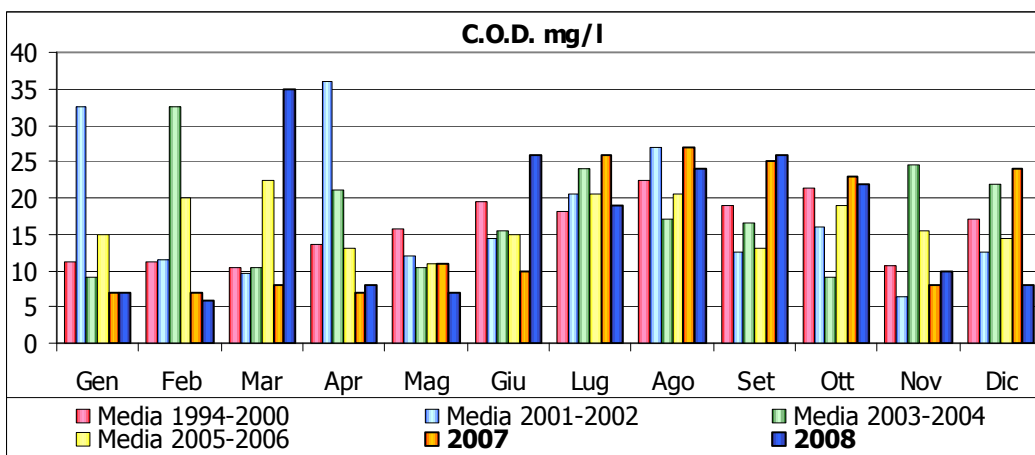
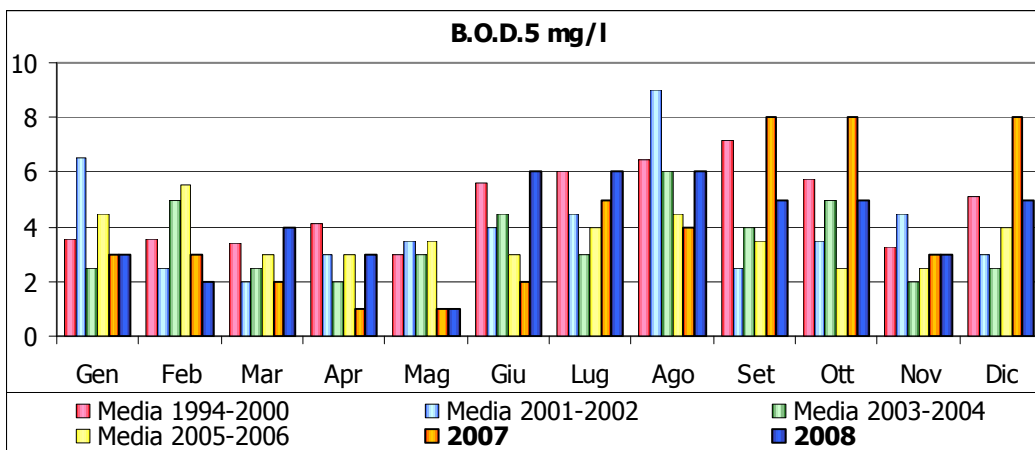
Fiume Panaro
Bomporto – stazione 8



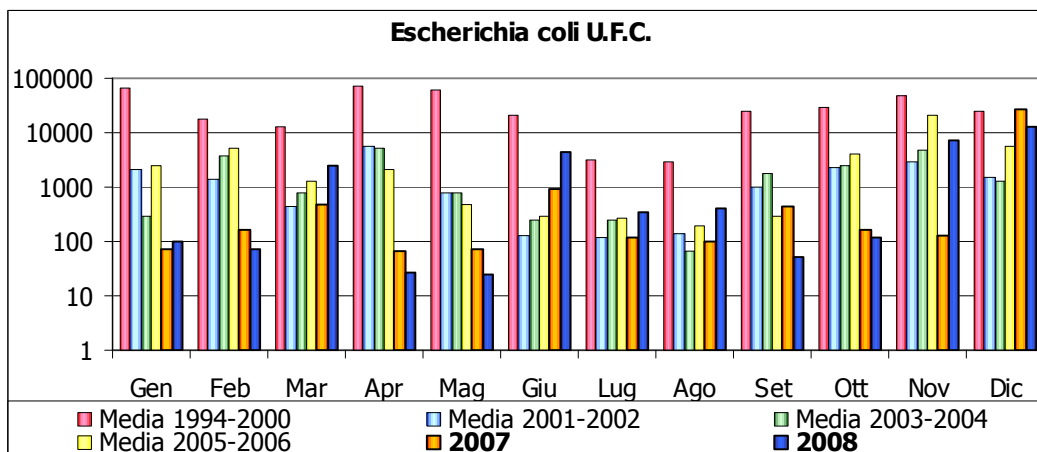
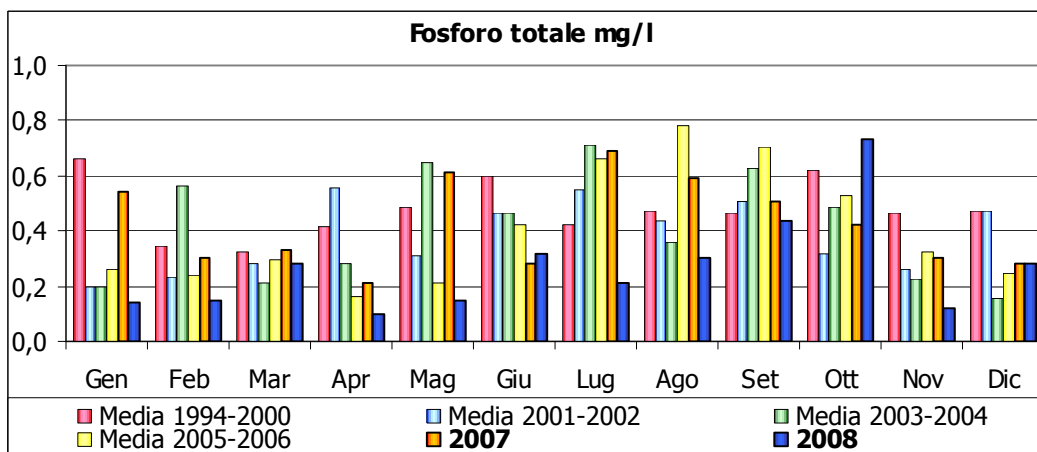
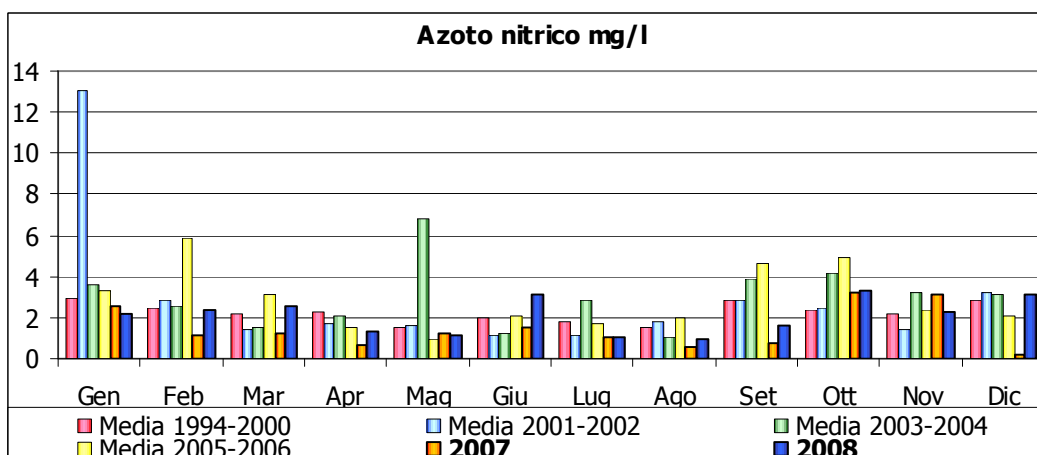
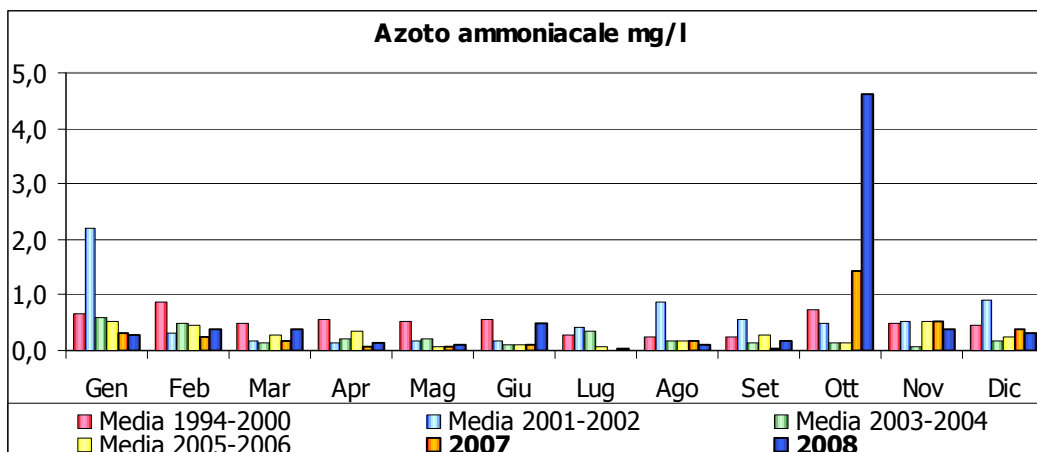
Fiume Panaro
Ponte di Bondeno – stazione 10



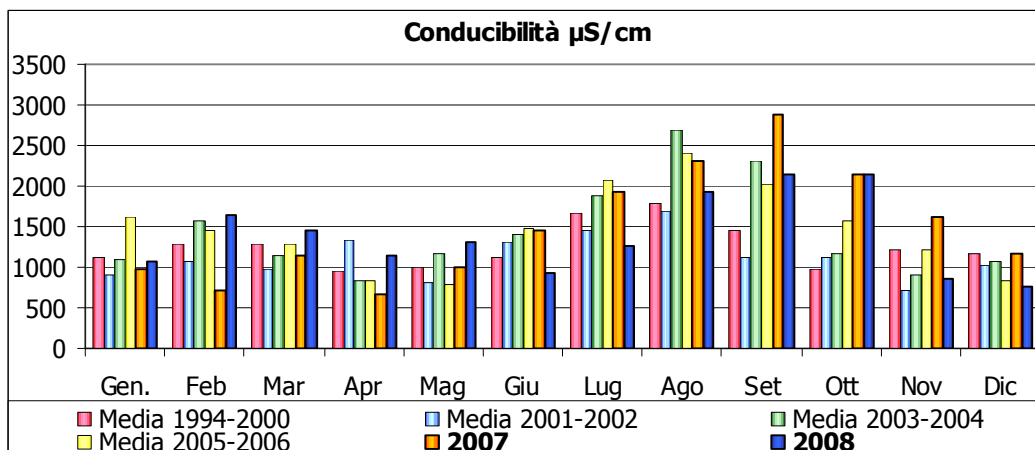
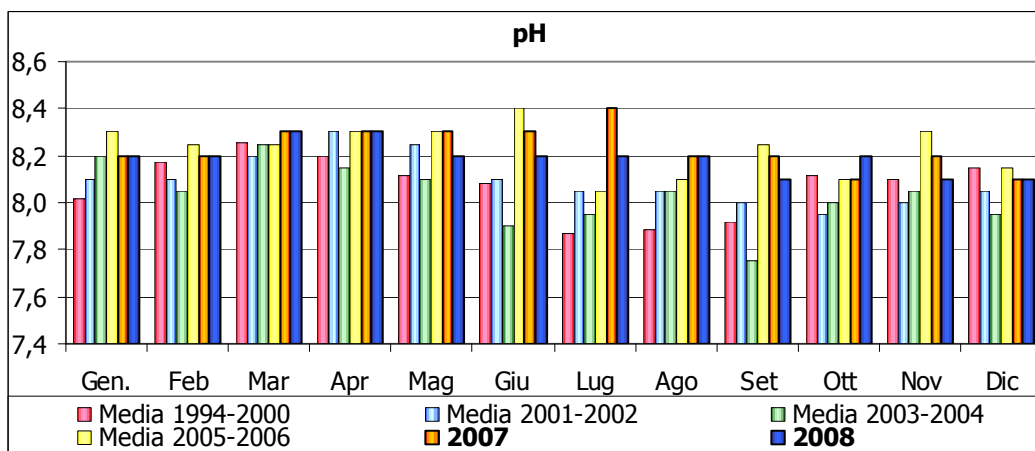
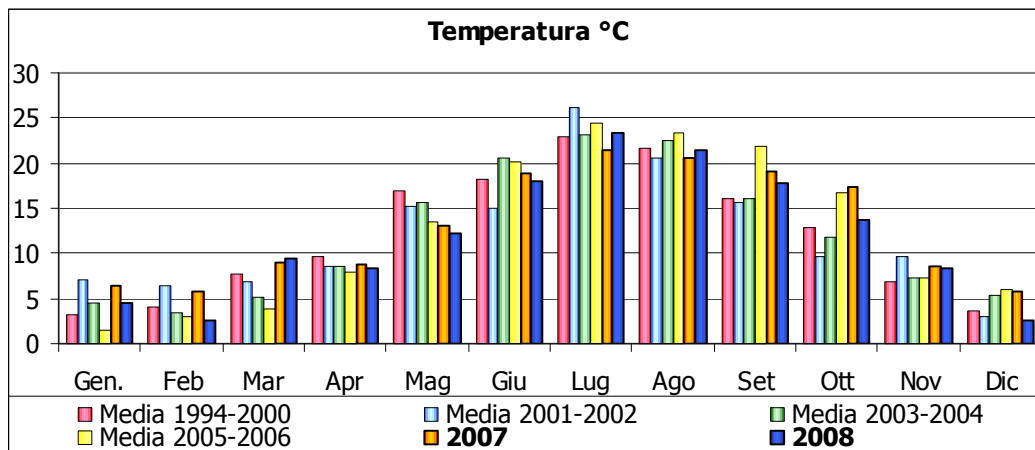
Fiume Panaro
Ponte di Bondeno – stazione 10



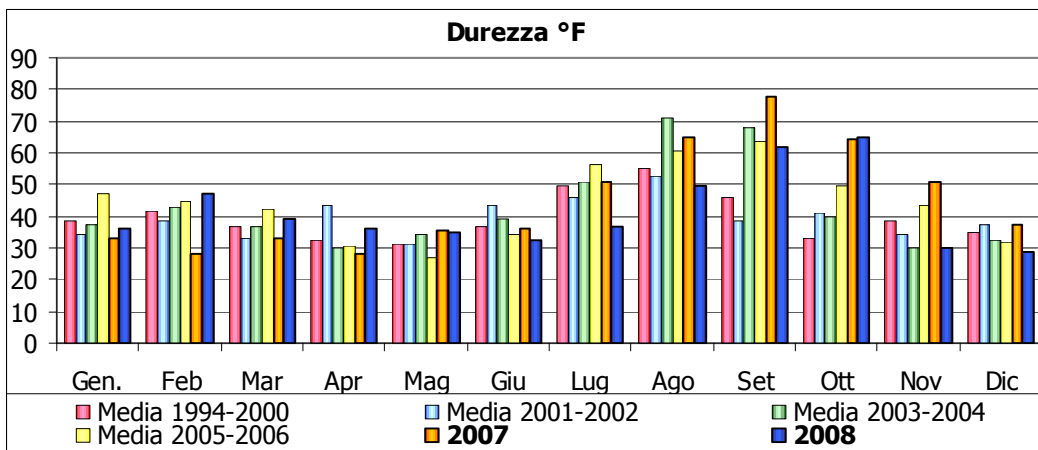
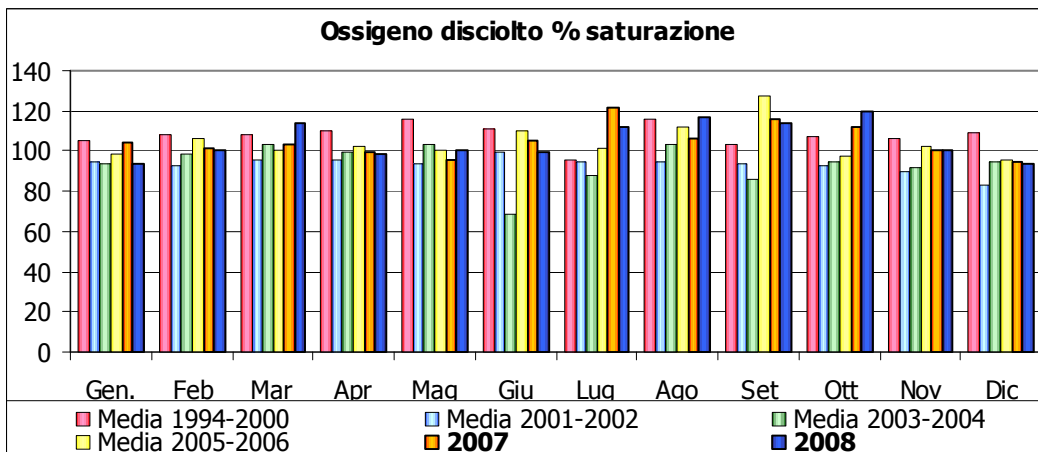
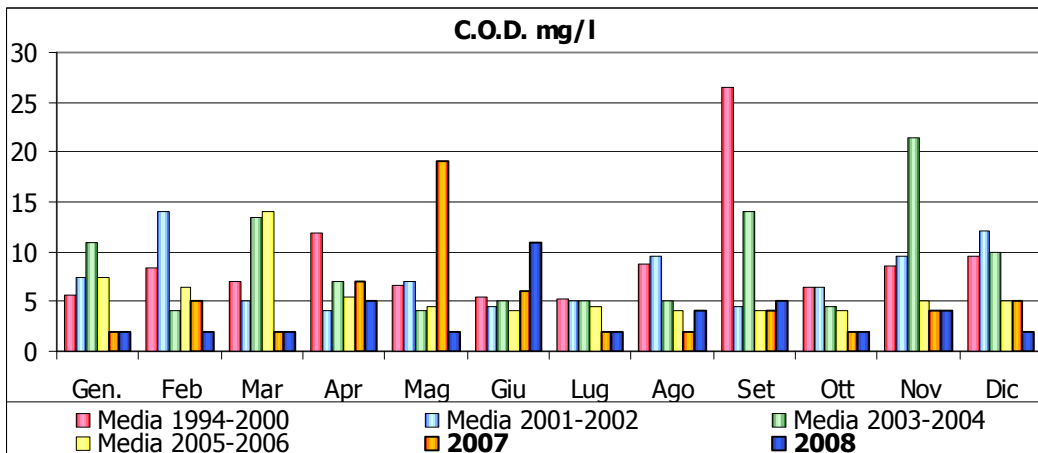
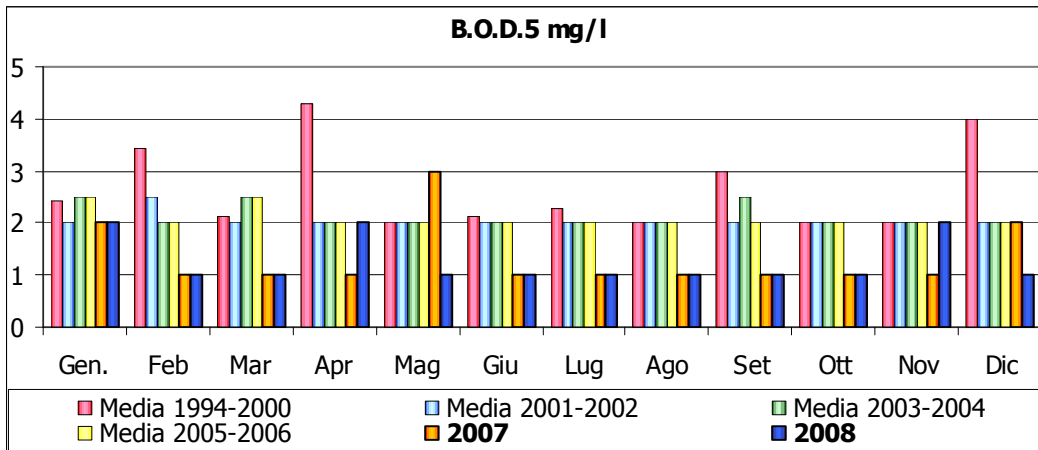
Fiume Panaro
Ponte di Bondeno – stazione 10



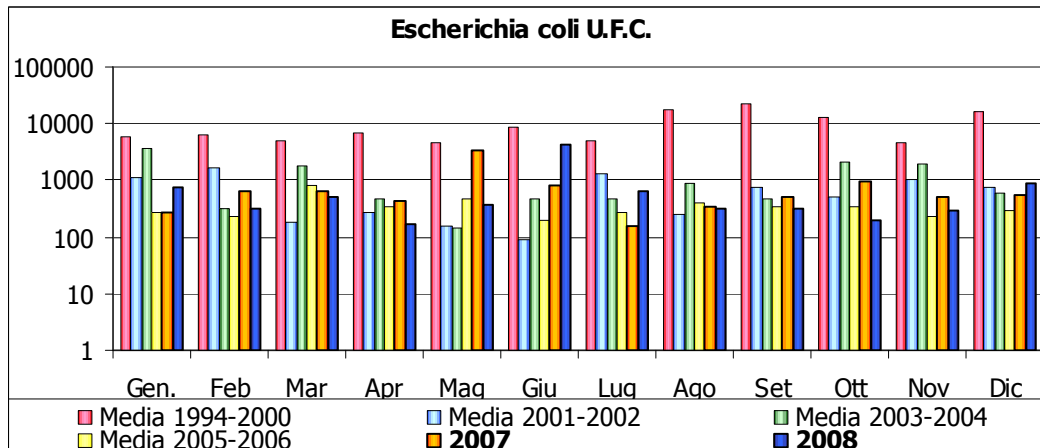
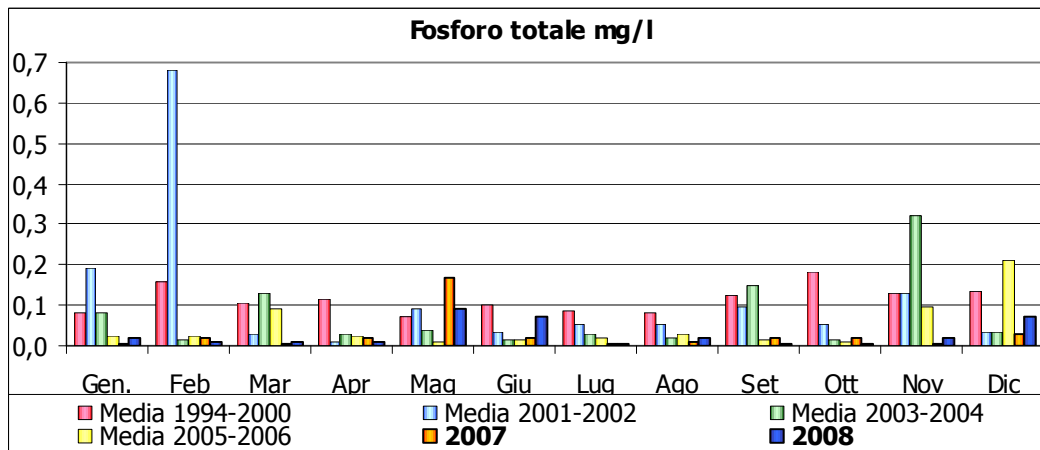
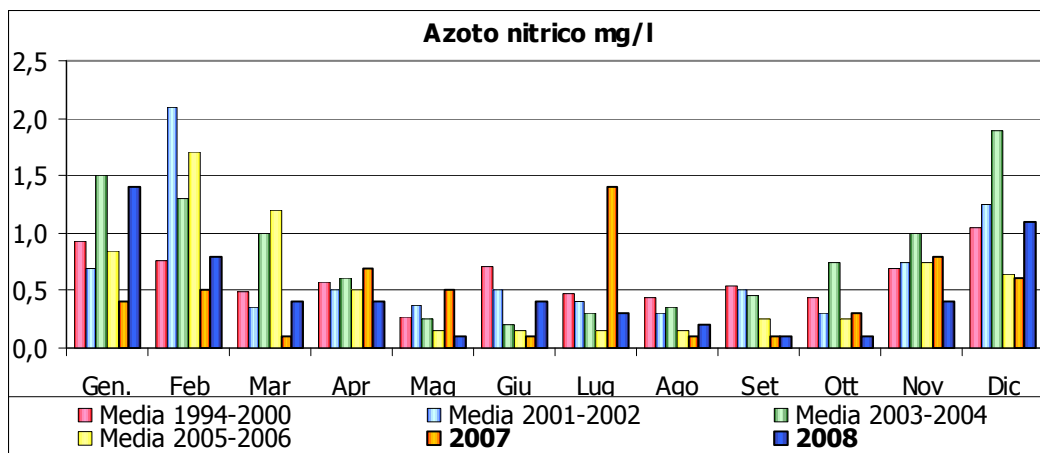
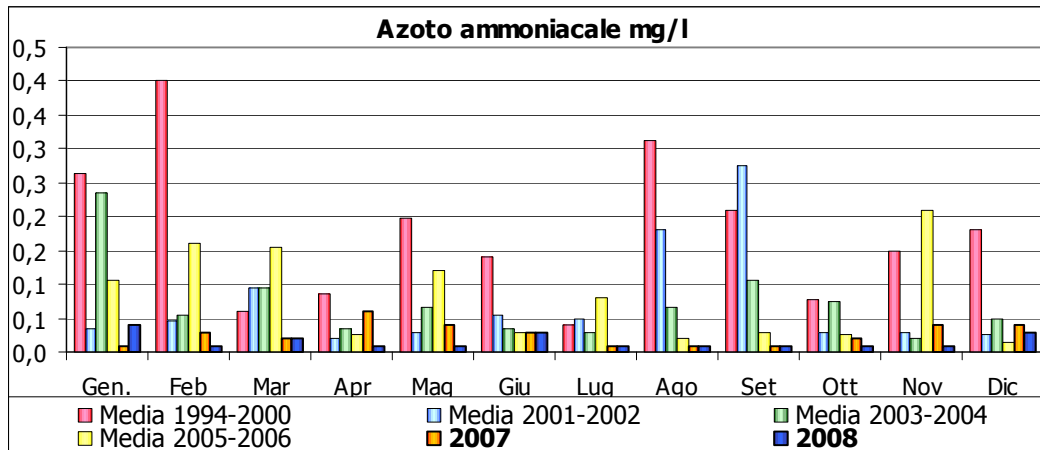
Fiume Secchia
Traversa di Castellarano – stazione 5



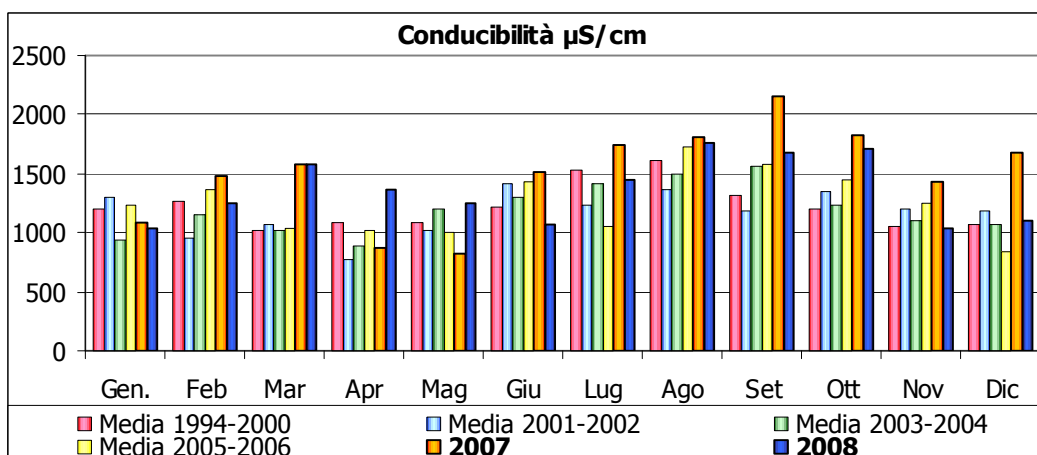
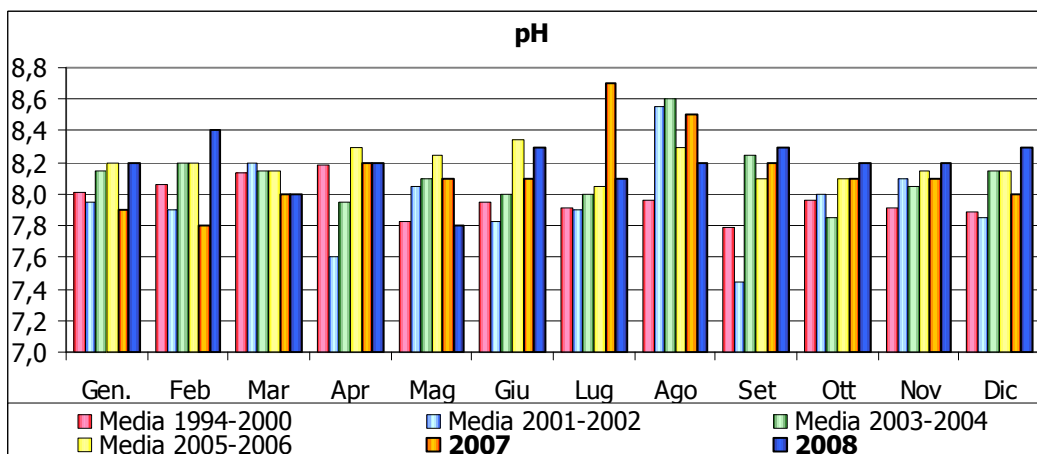
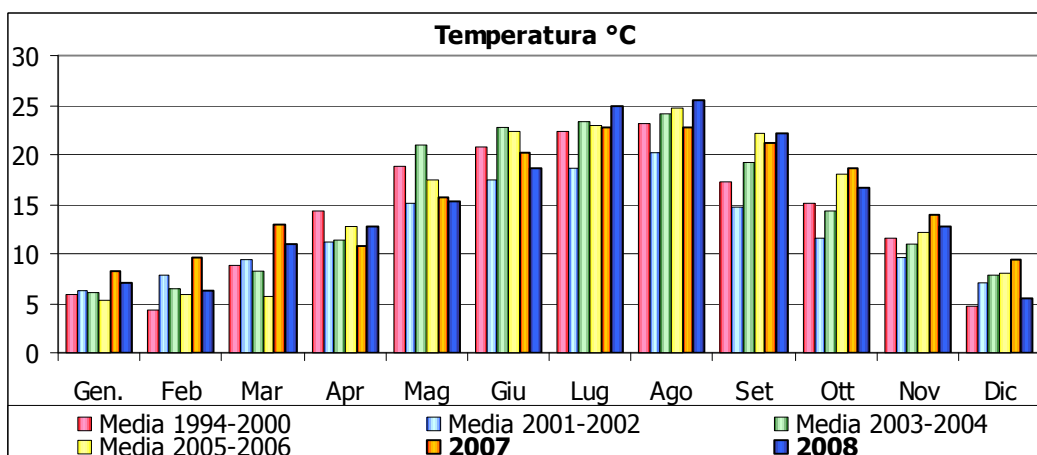
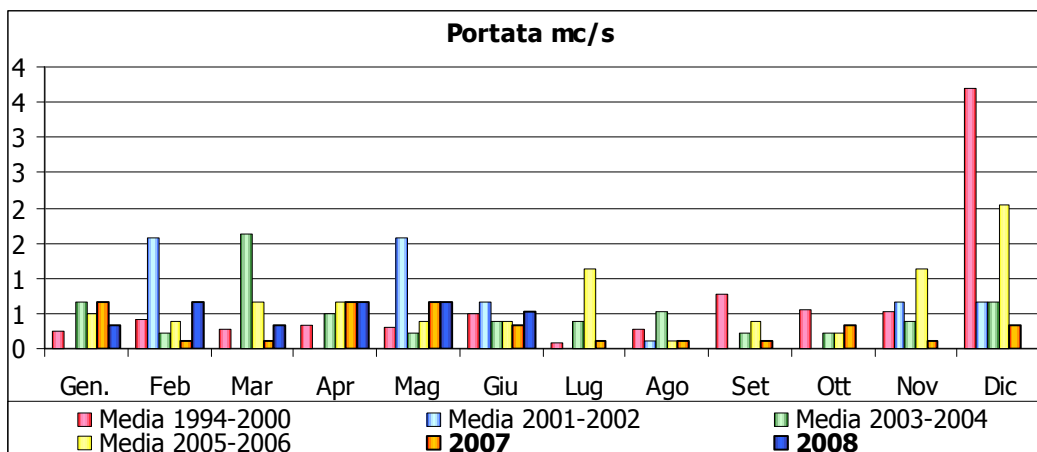
Fiume Secchia
Traversa di Castellarano – stazione 5



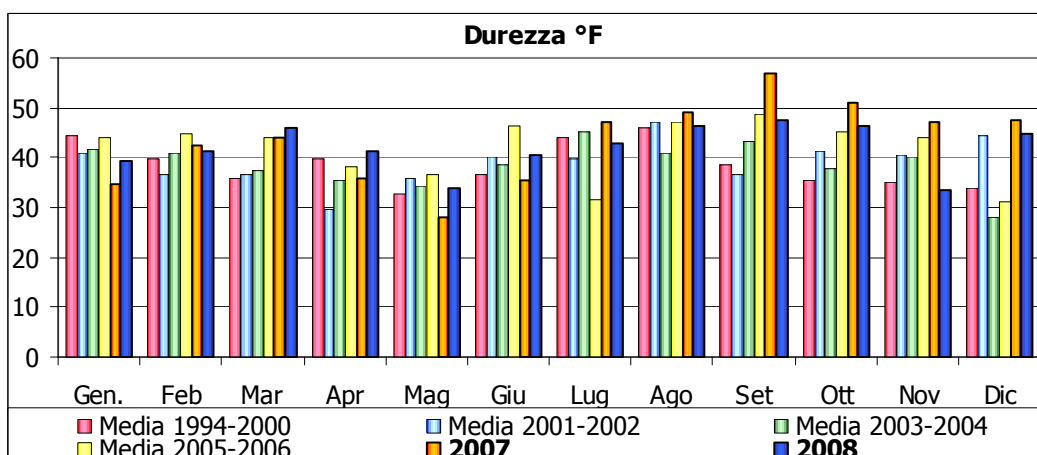
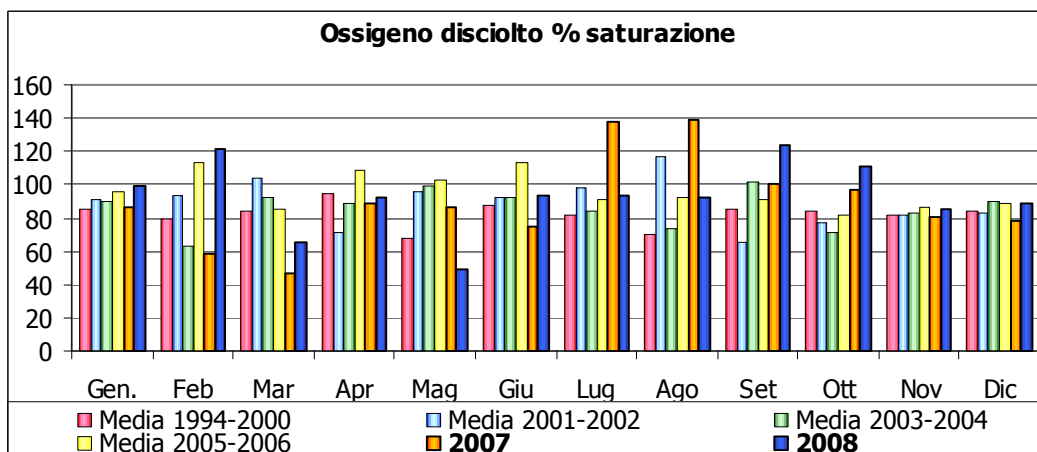
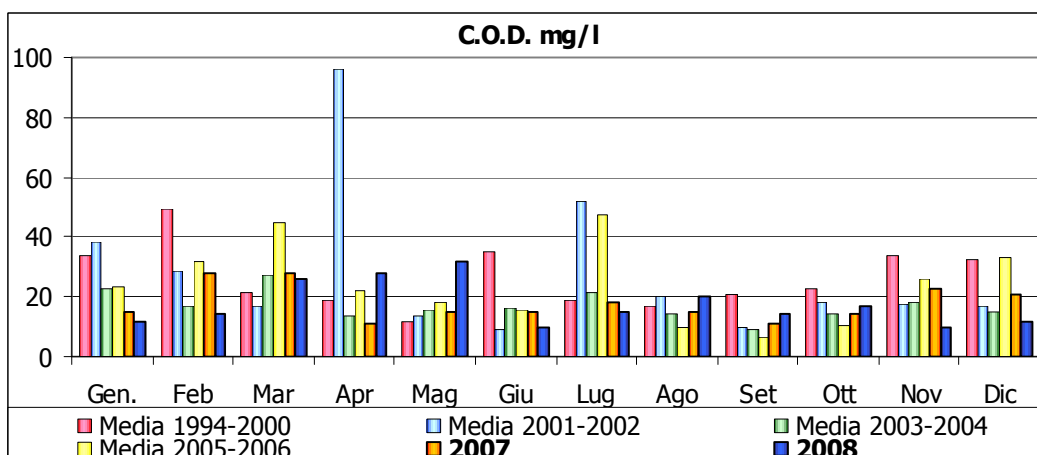
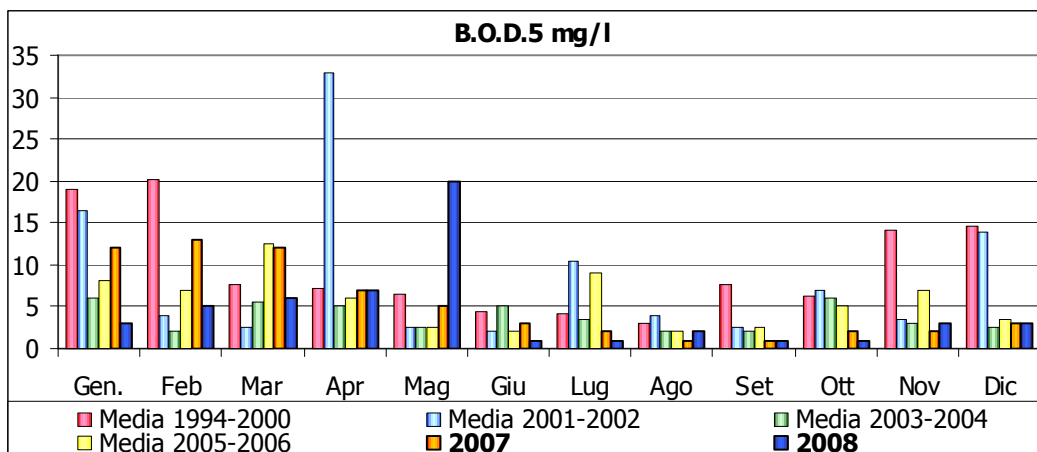
Fiume Secchia
Traversa di Castellarano – stazione 5



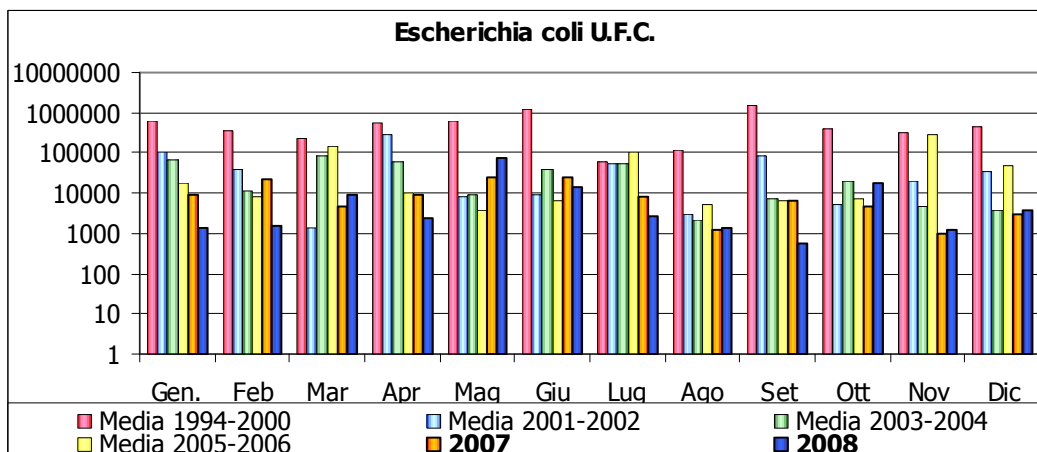
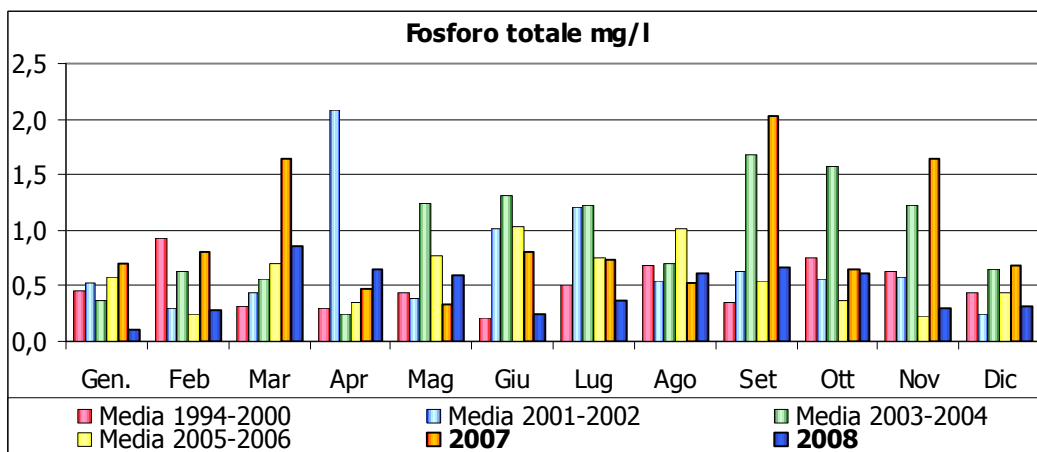
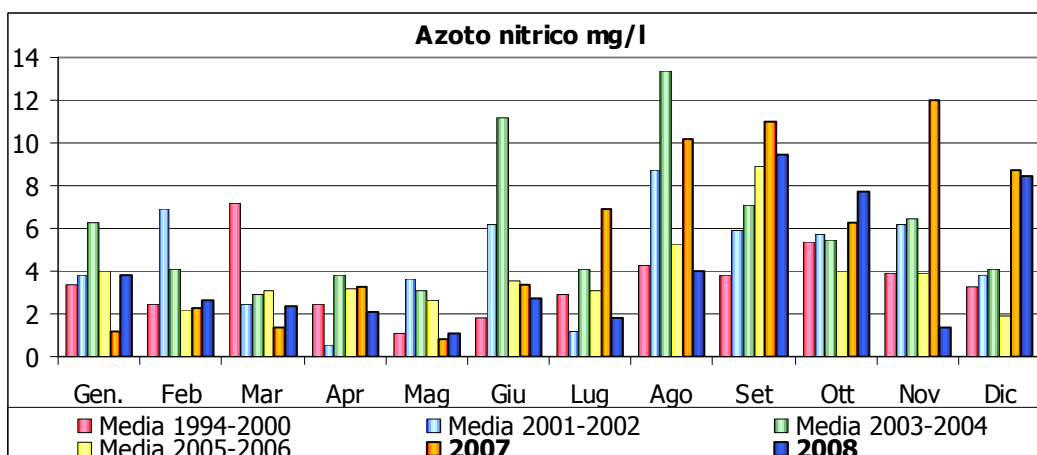
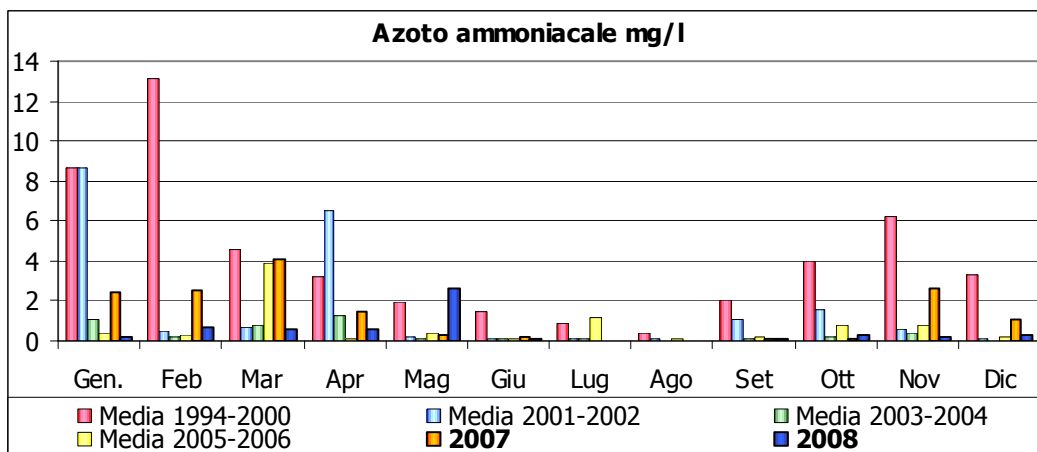
Fiume Secchia
Torrente Fossa di Spezzano – stazione 6



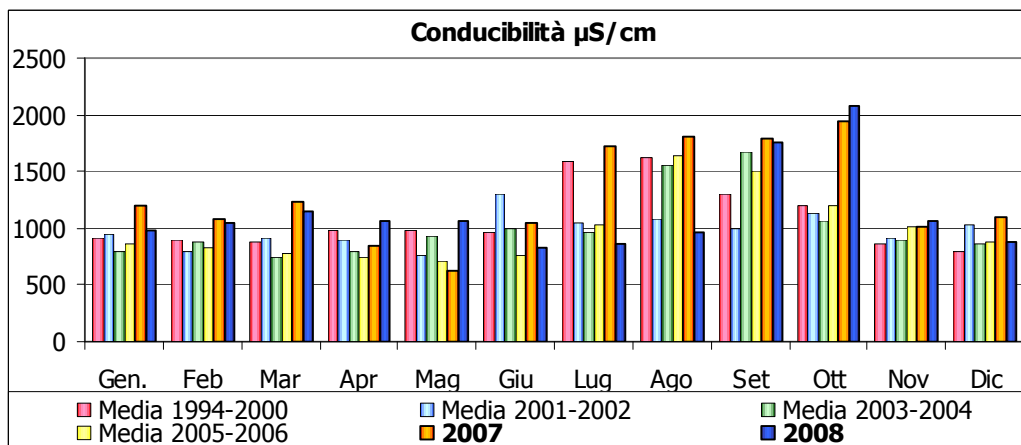
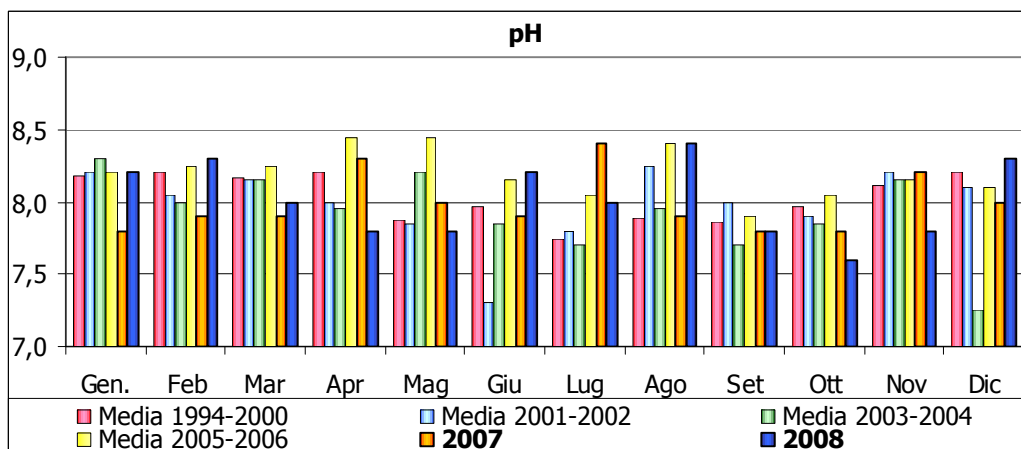
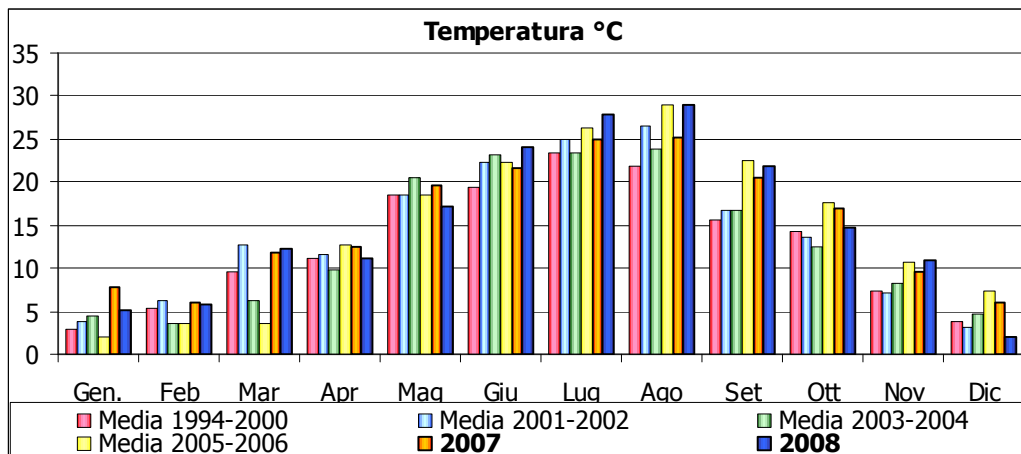
Fiume Secchia
Torrente Fossa di Spezzano – stazione 6



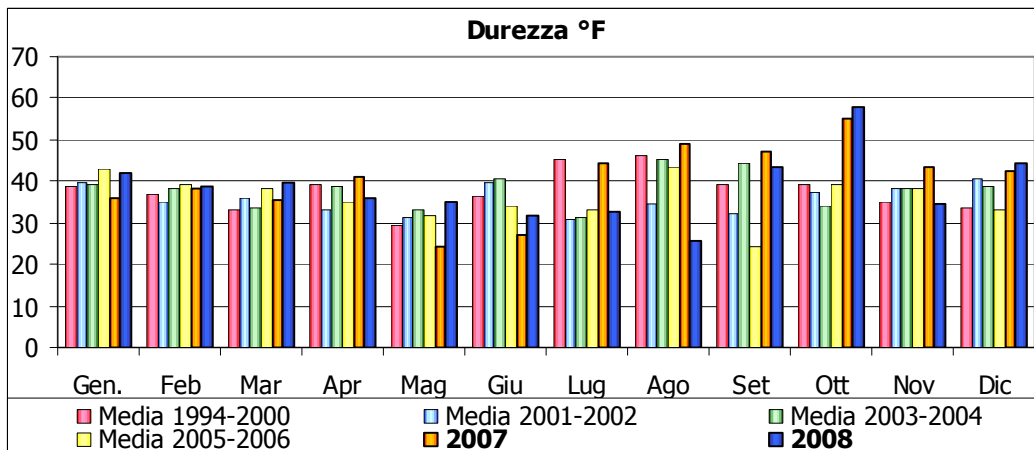
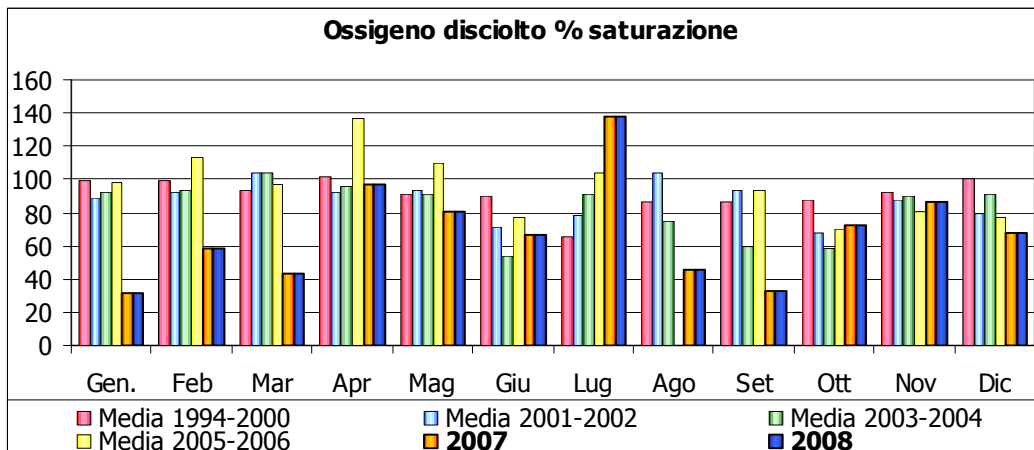
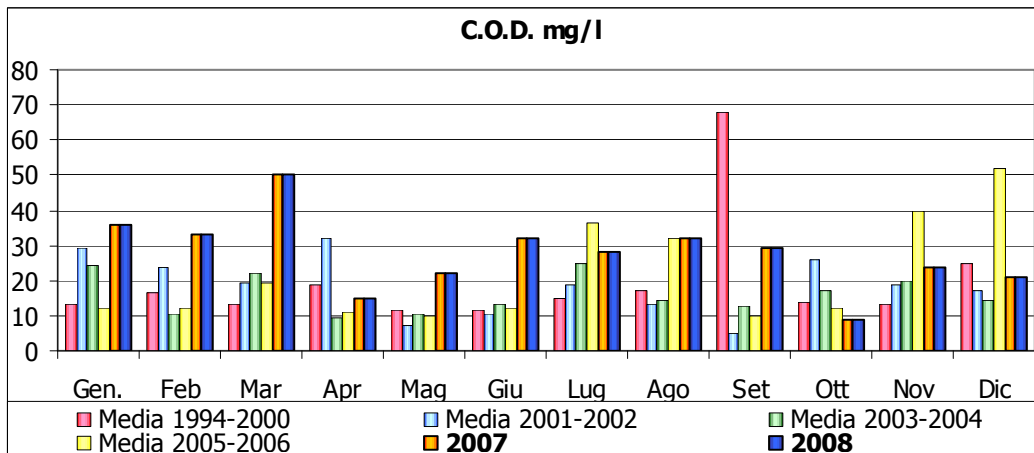
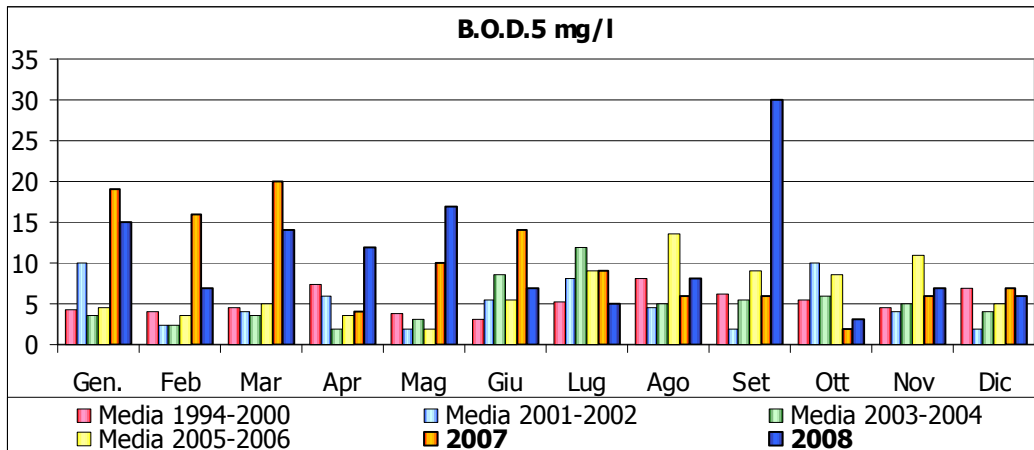
Fiume Secchia
Torrente Fossa di Spezzano – stazione 6



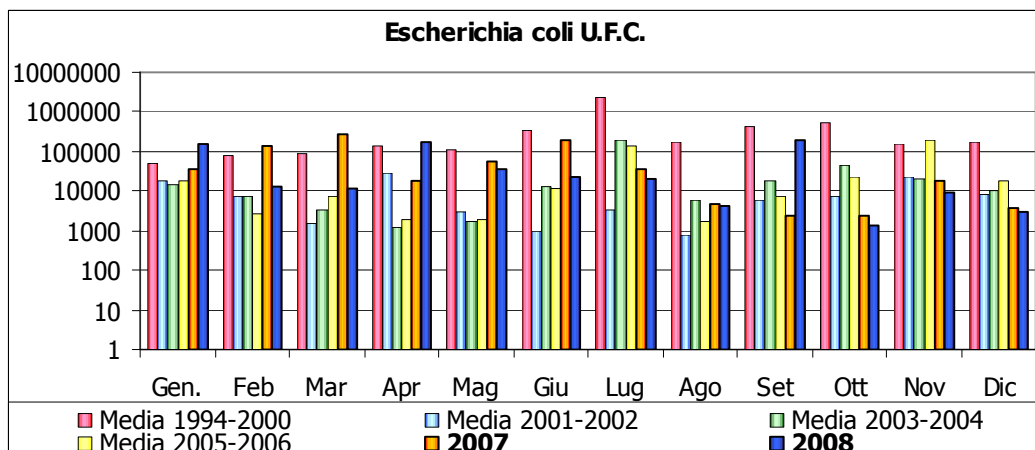
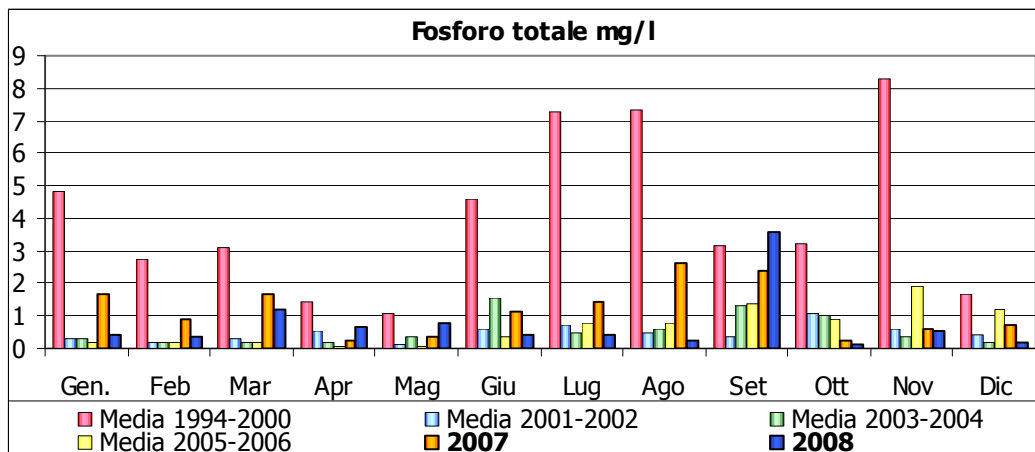
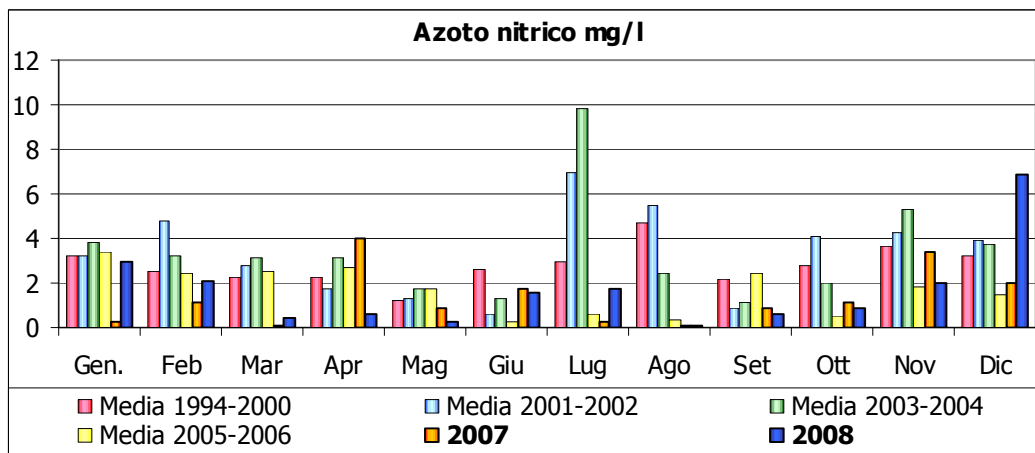
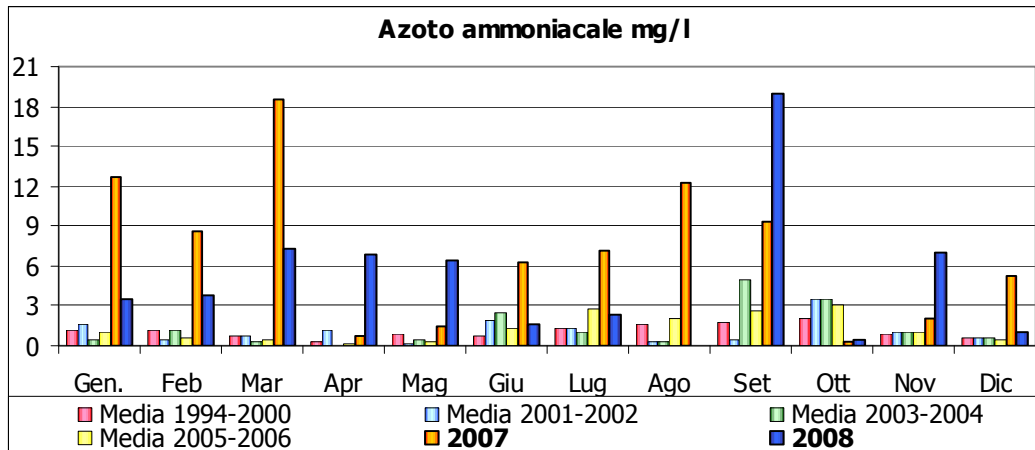
Fiume Secchia
Torrente Tresinaro – stazione 7



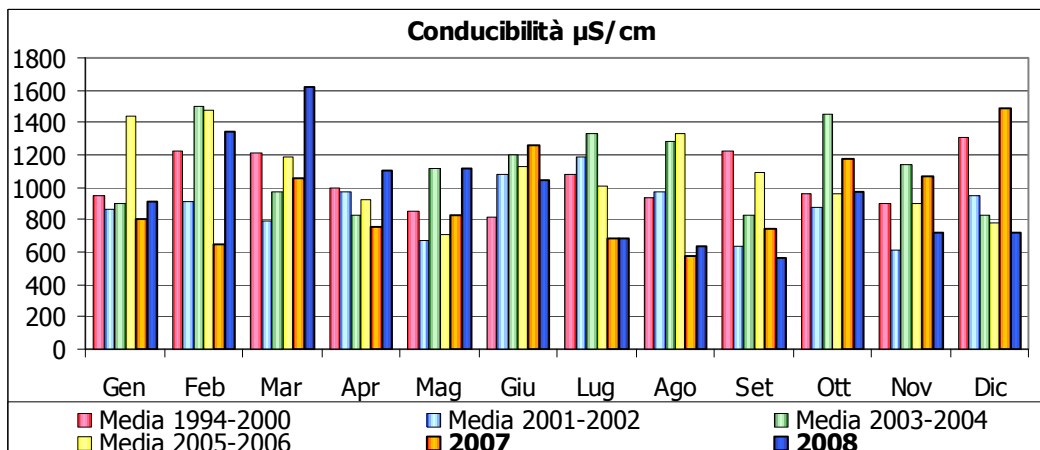
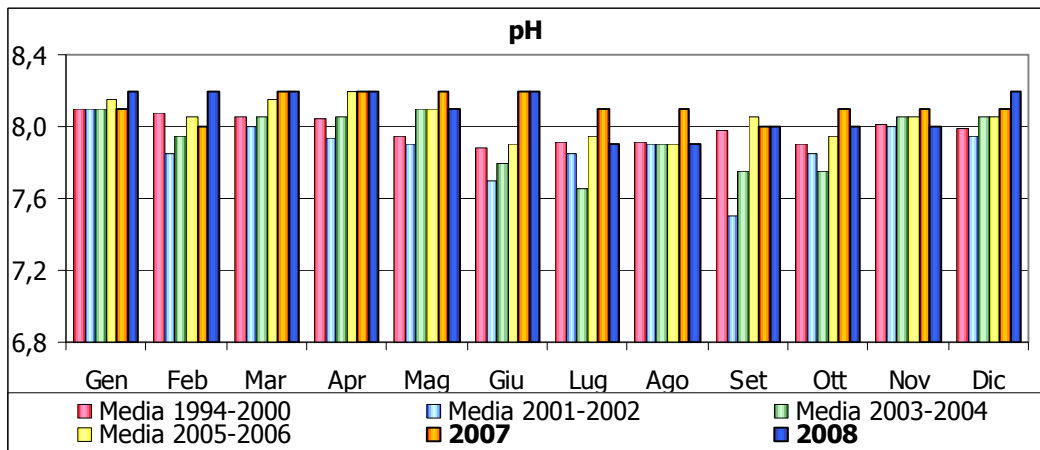
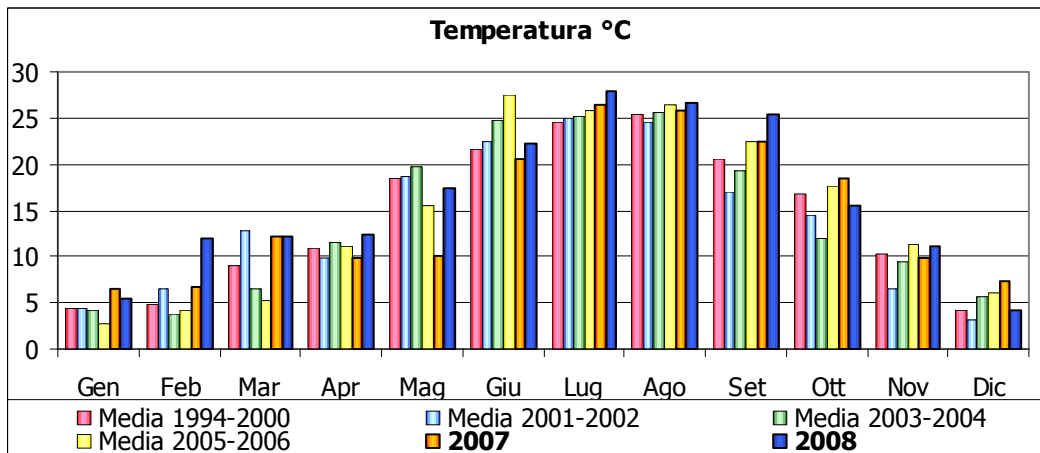
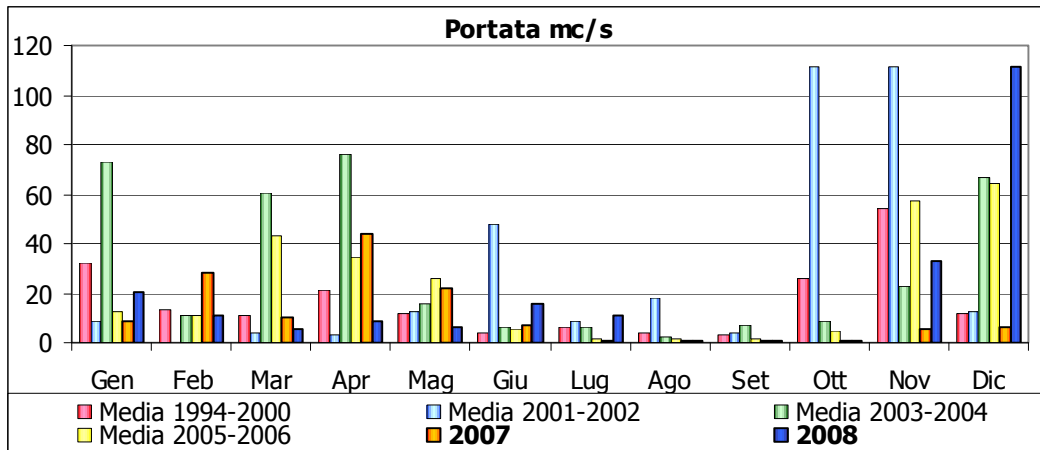
Fiume Secchia
Torrente Tresinaro – stazione 7



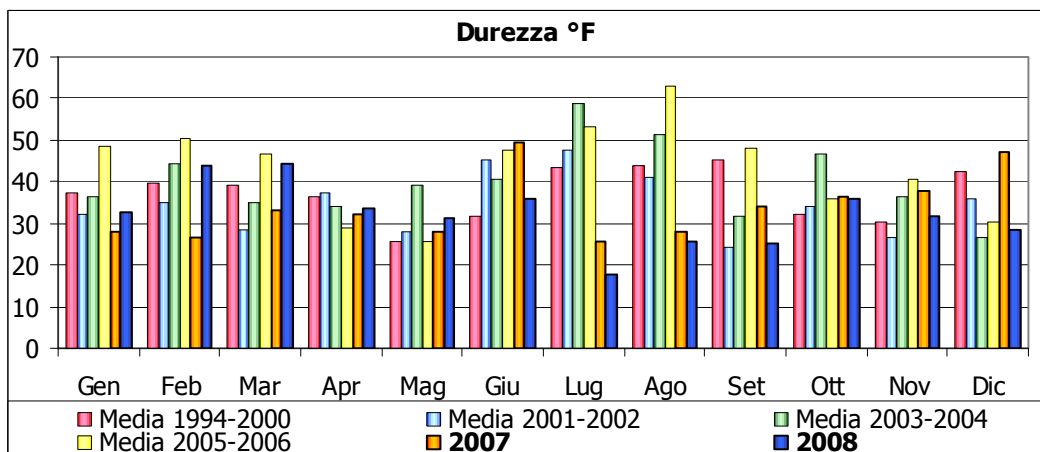
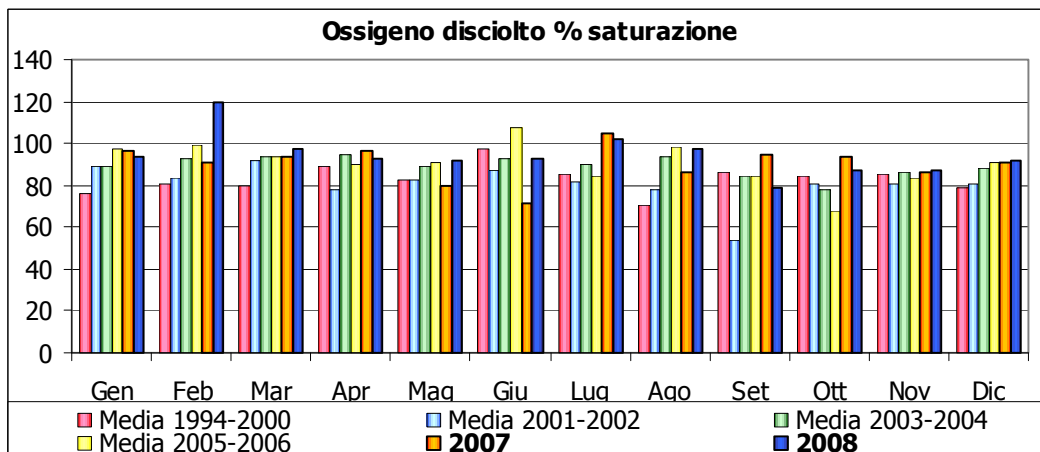
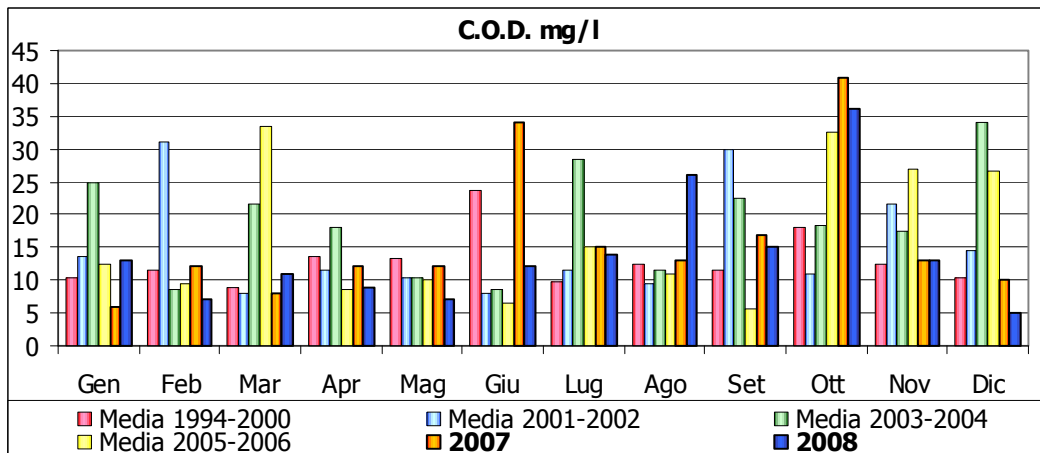
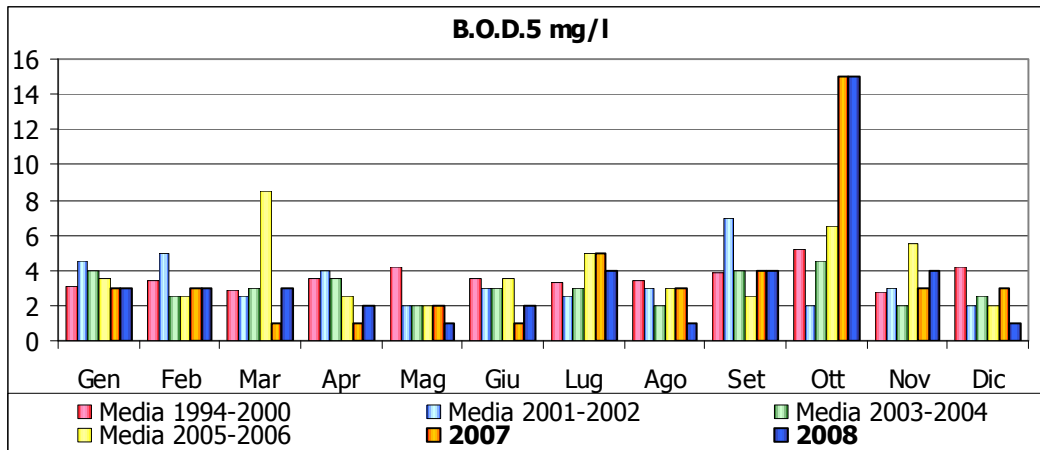
Fiume Secchia
Torrente Tresinaro – stazione 7



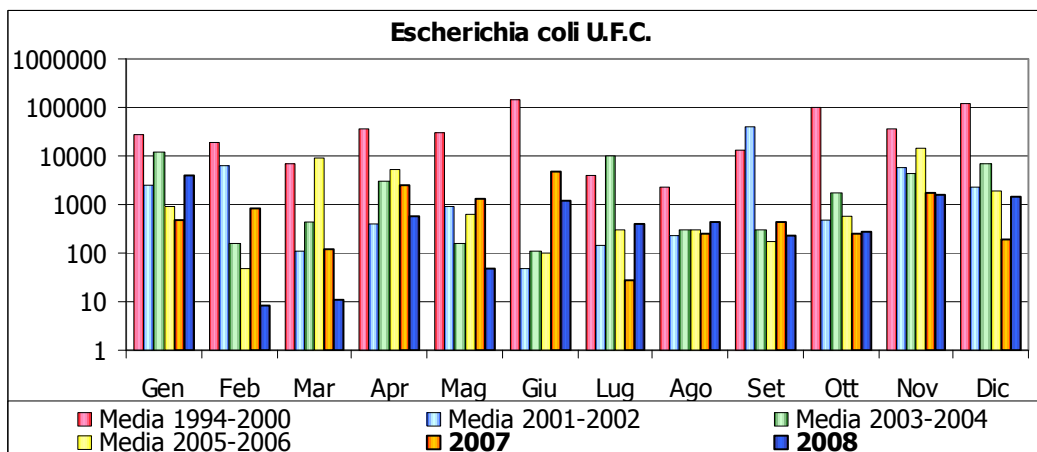
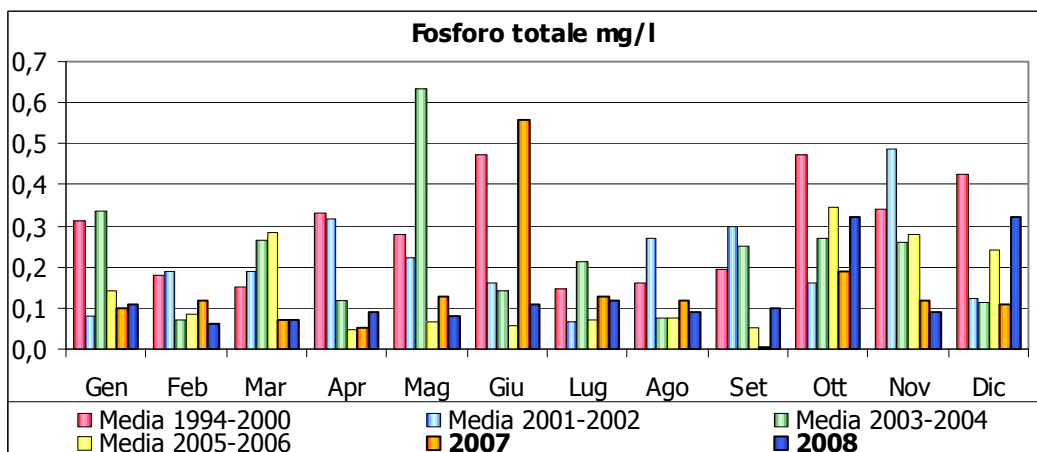
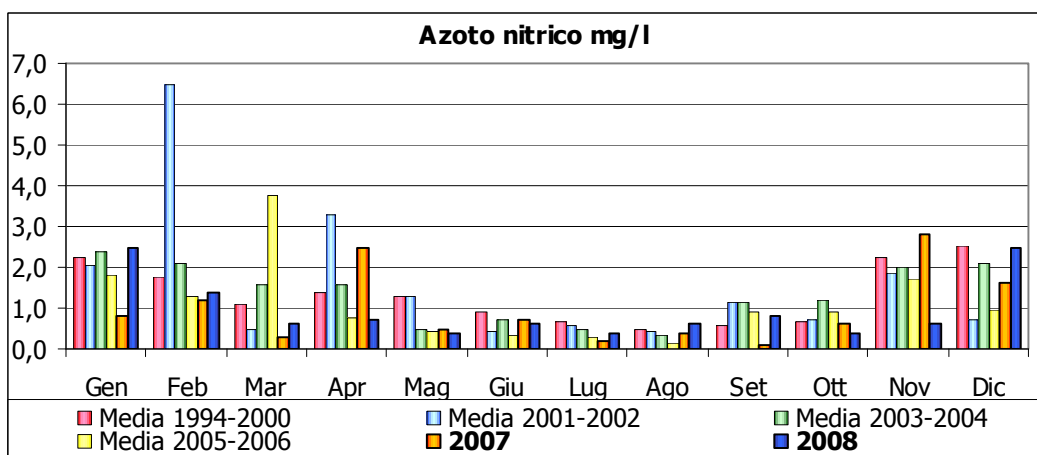
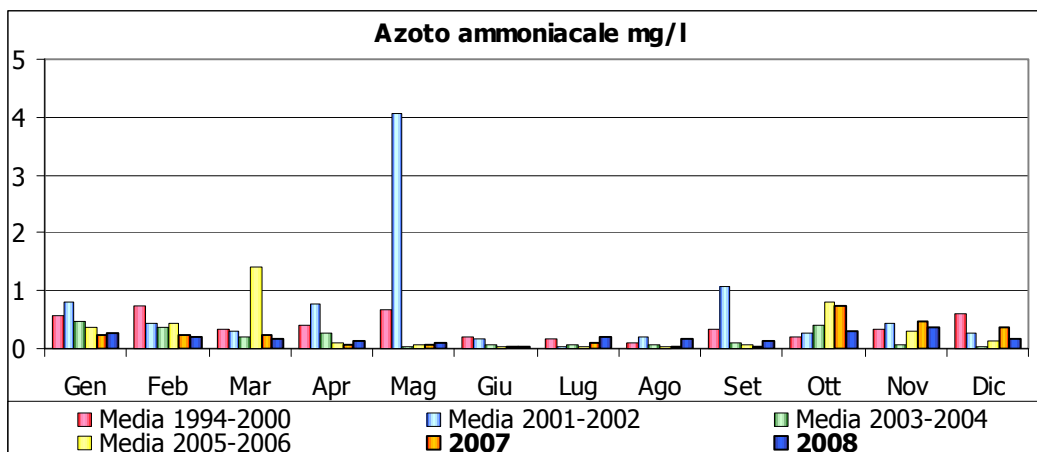
Fiume Secchia
Ponte di Bondanello – stazione 10



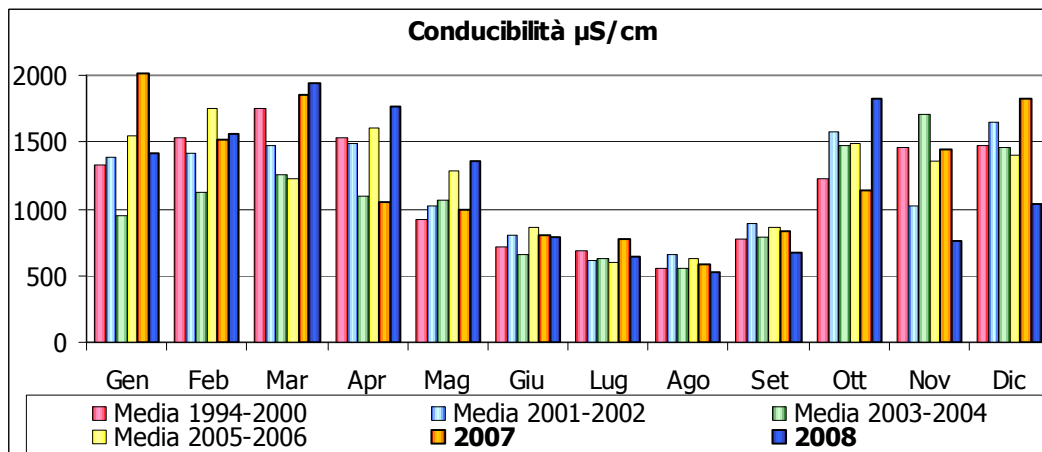
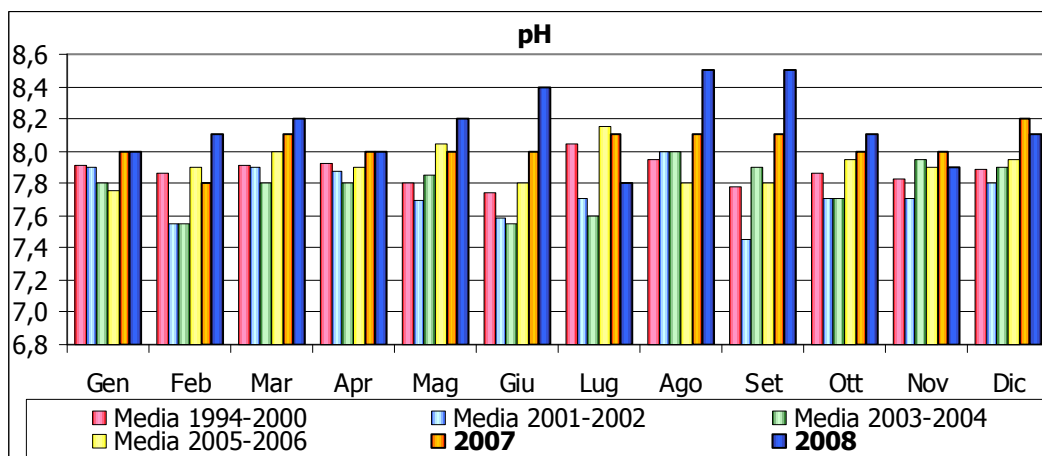
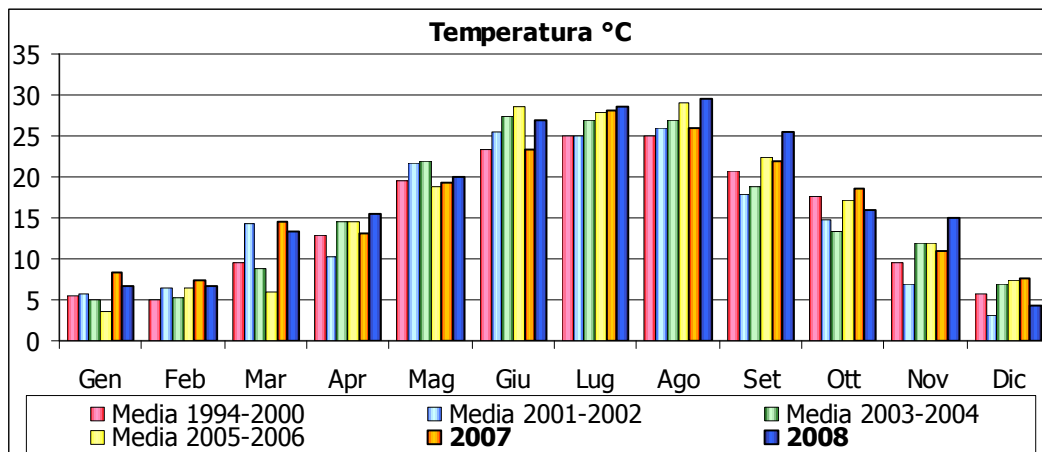
Fiume Secchia
Ponte di Bondanello – stazione 10



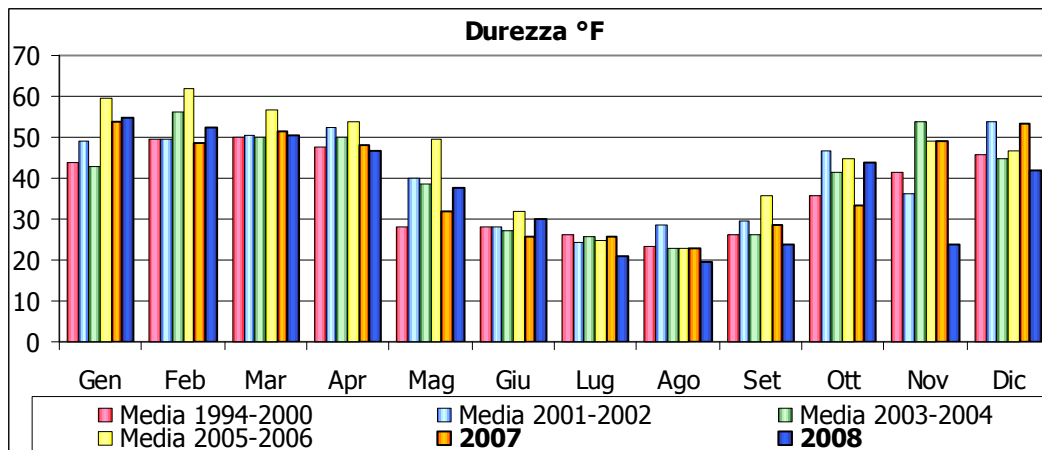
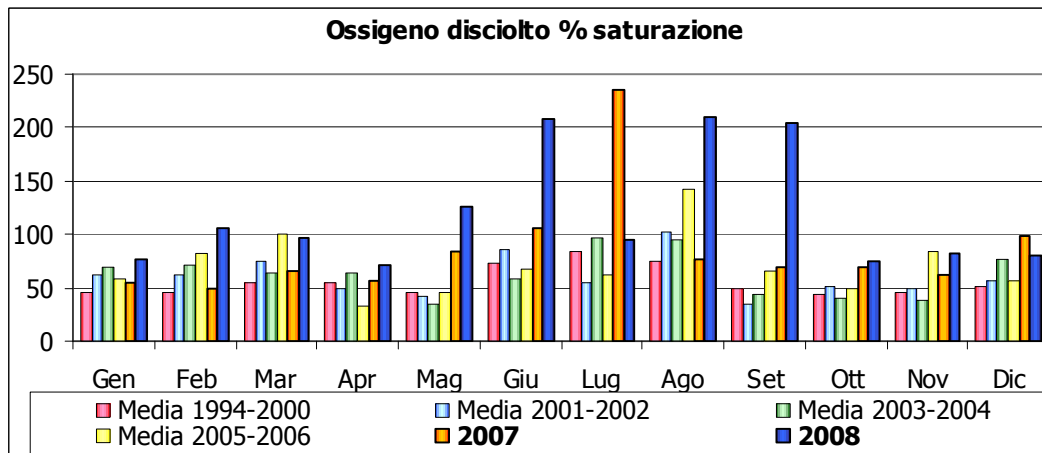
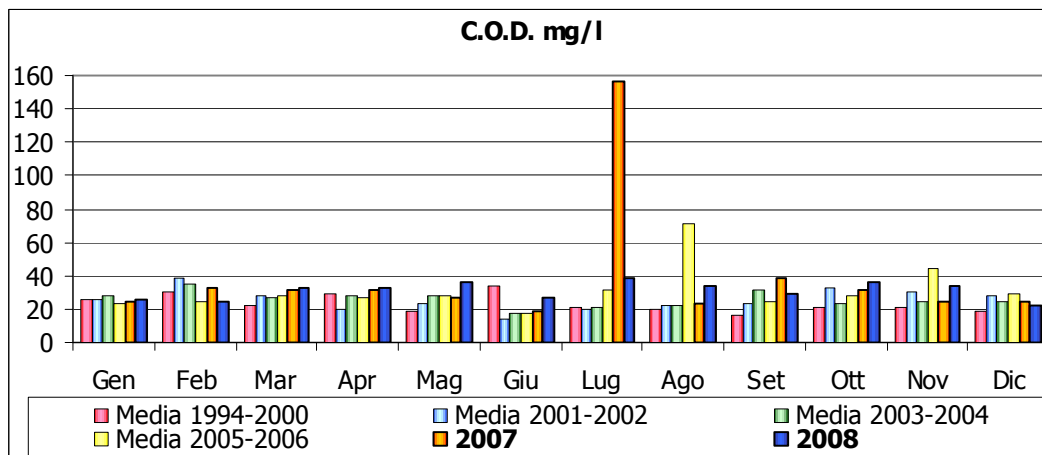
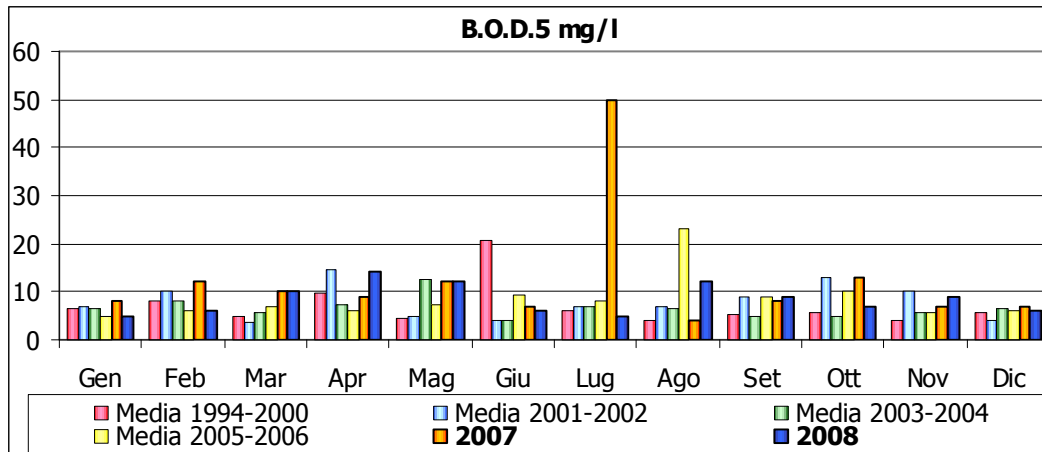
Fiume Secchia
Ponte di Bondanello – stazione 10



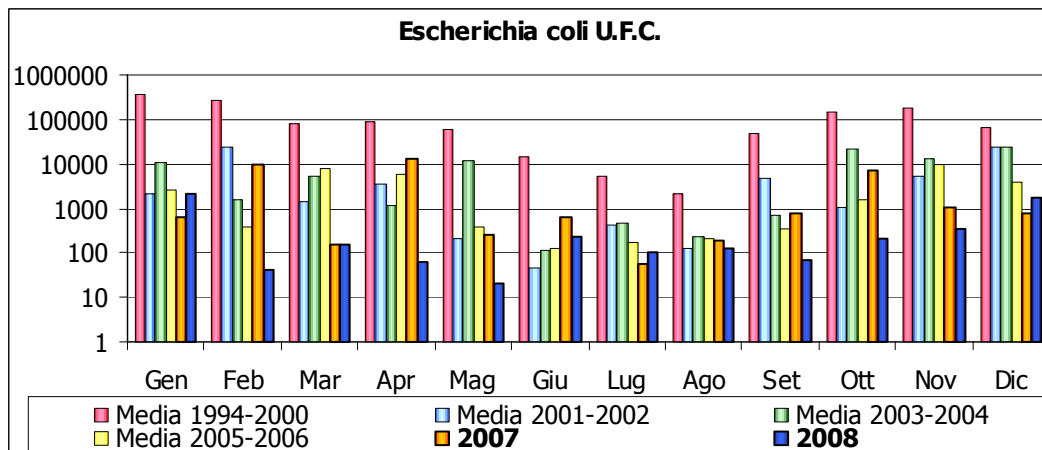
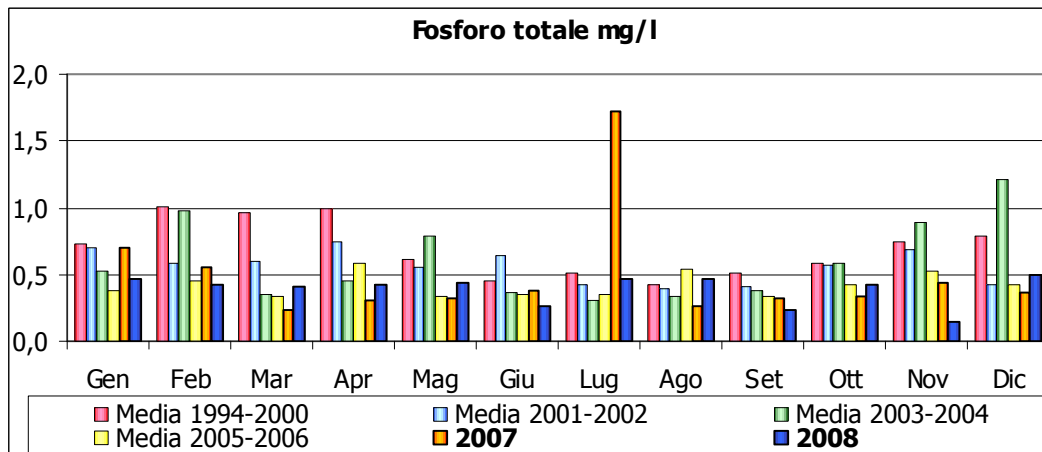
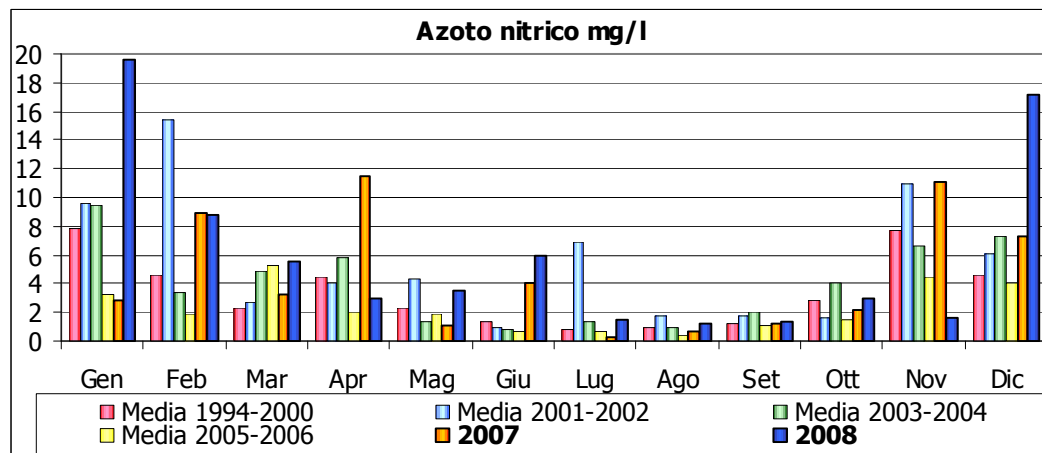
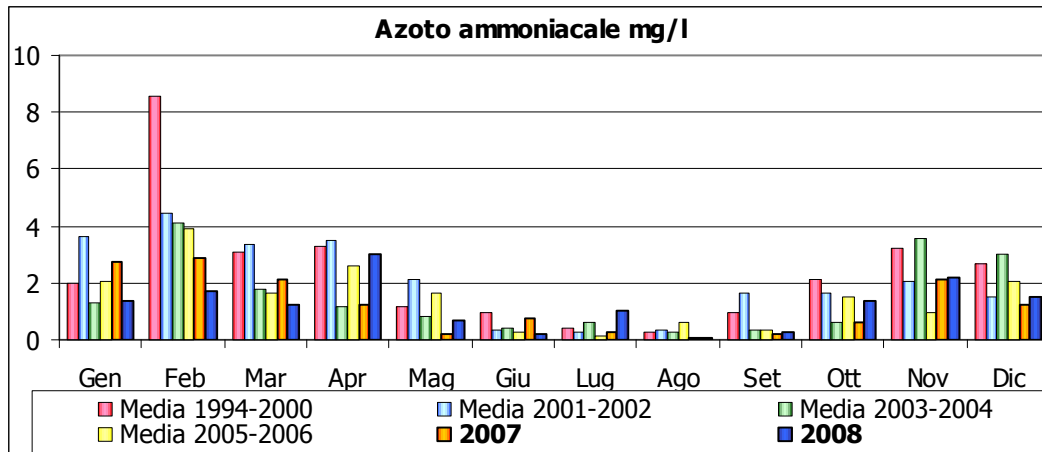
Fiume Secchia
Canale Emissario – stazione 11



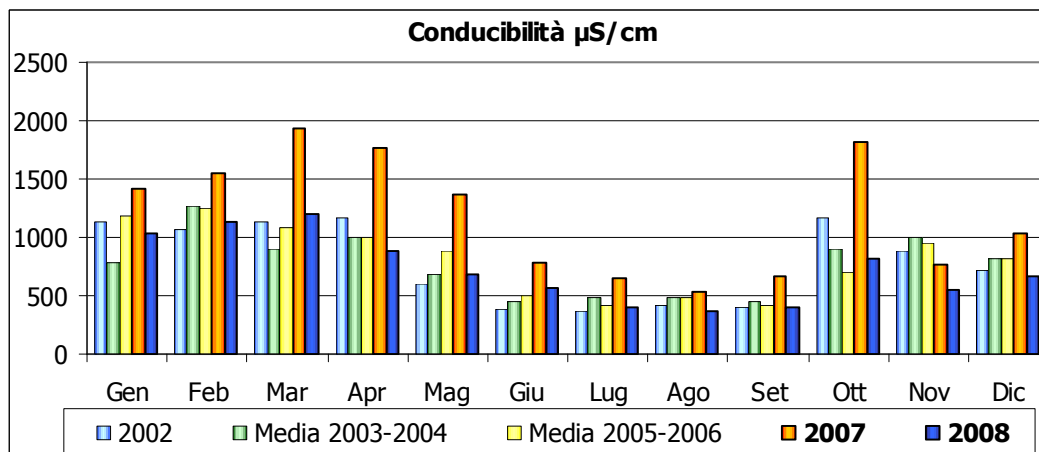
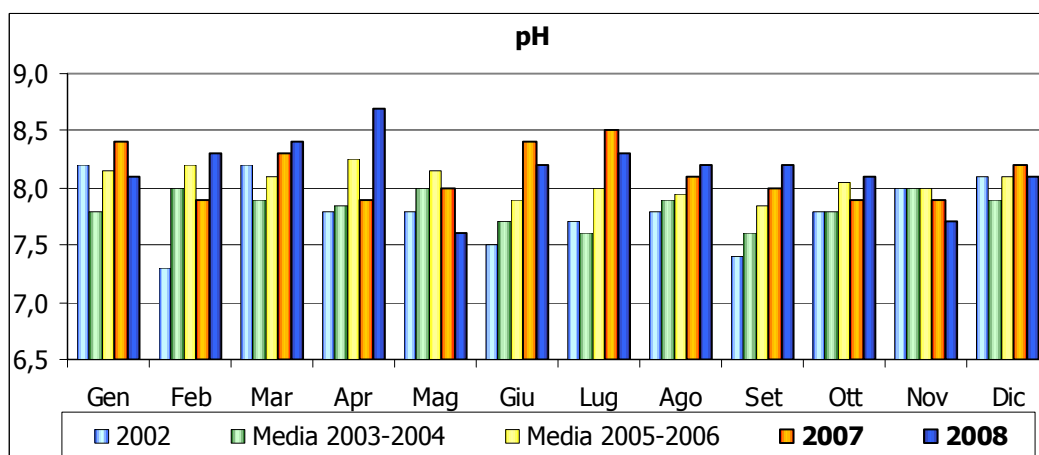
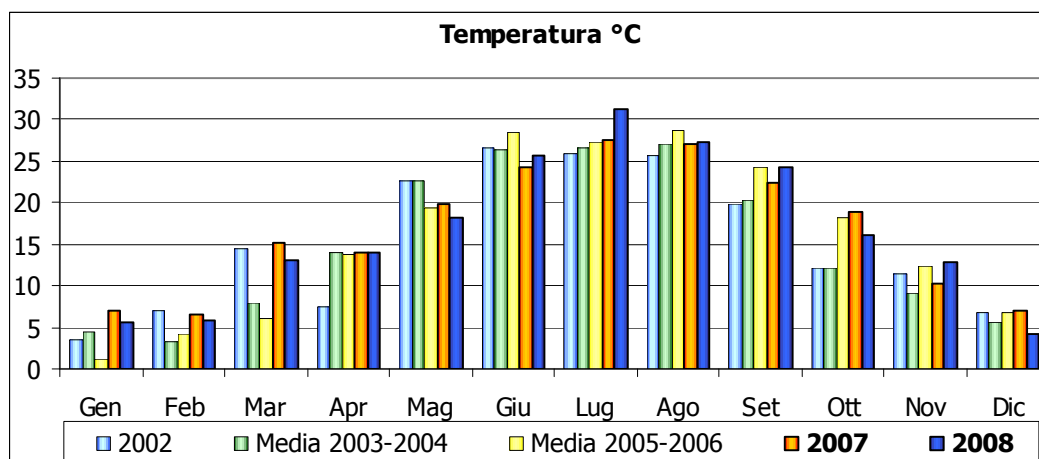
Fiume Secchia
Canale Emissario – stazione 11



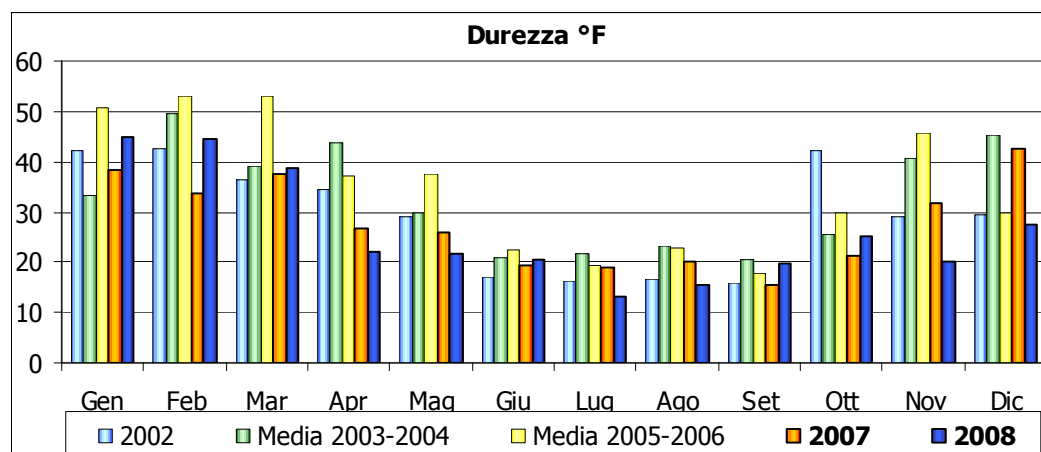
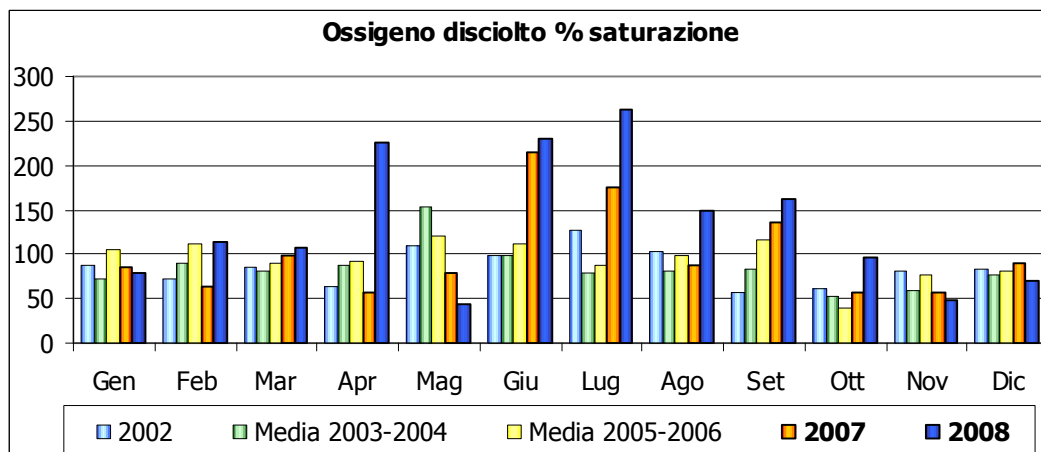
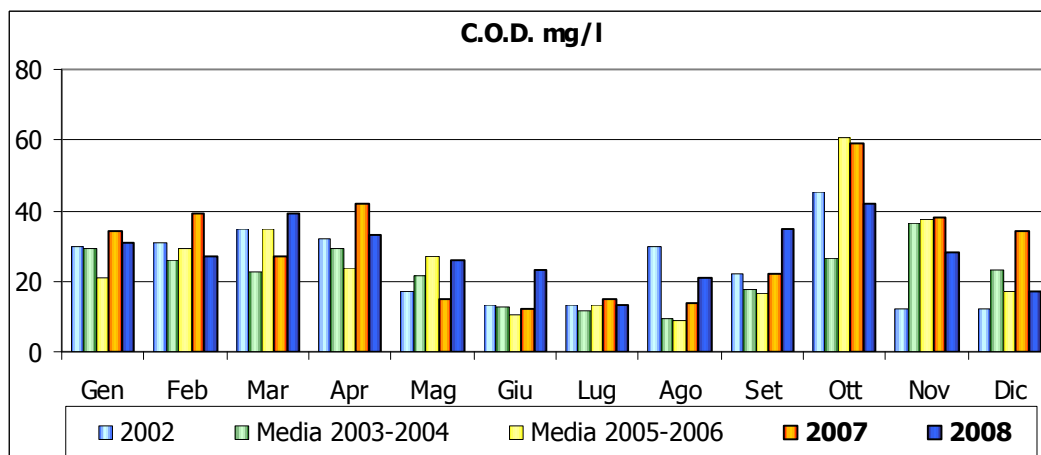
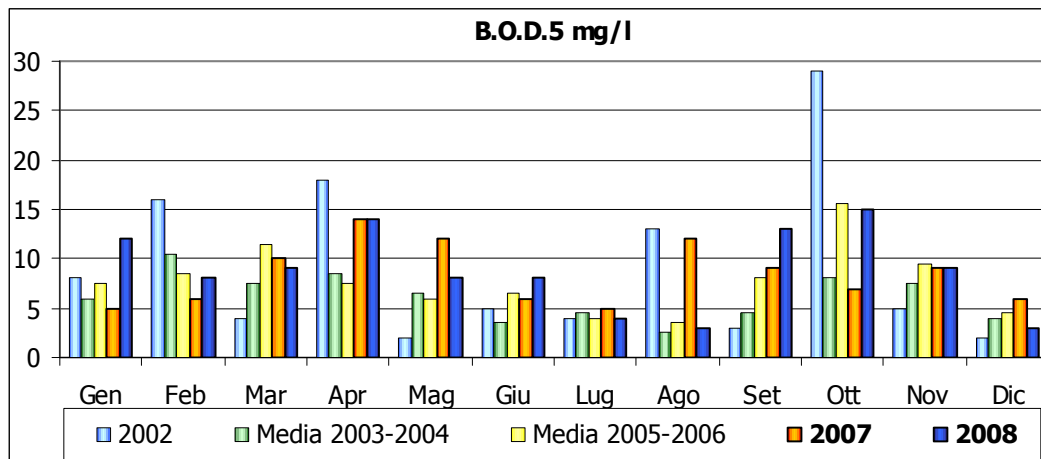
Fiume Secchia
Canale Emissario – stazione 11



Fiume Secchia
Cavo Parmigiana Moglia – stazione 12



Fiume Secchia
Cavo Parmigiana Moglia – stazione 12



Fiume Secchia
Cavo Parmigiana Moglia – stazione 12

