

Allegato 4

Elaborazioni cartografiche dei dati anni 2005-2006

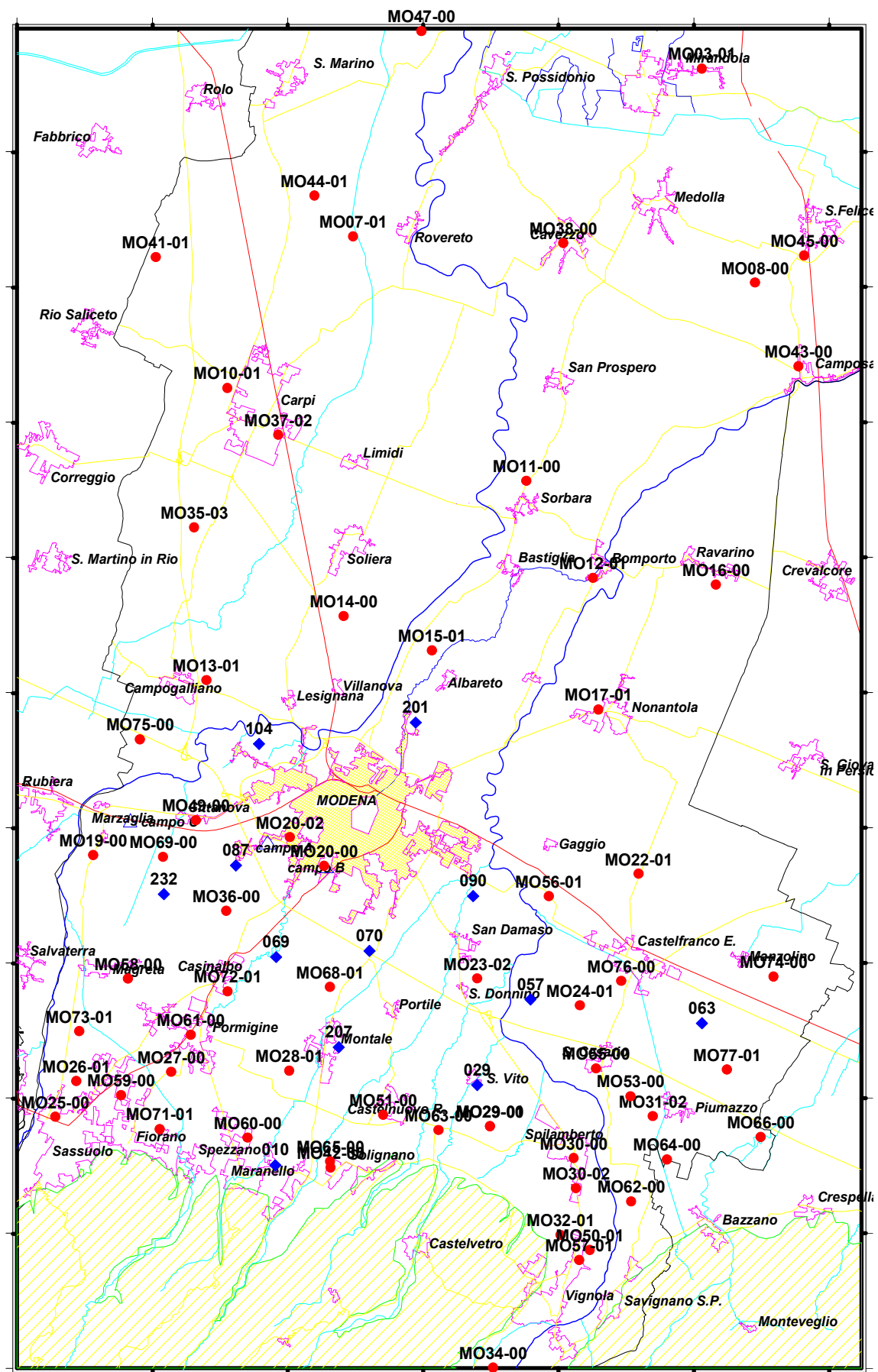


Figura 39 – Rete di monitoraggio.

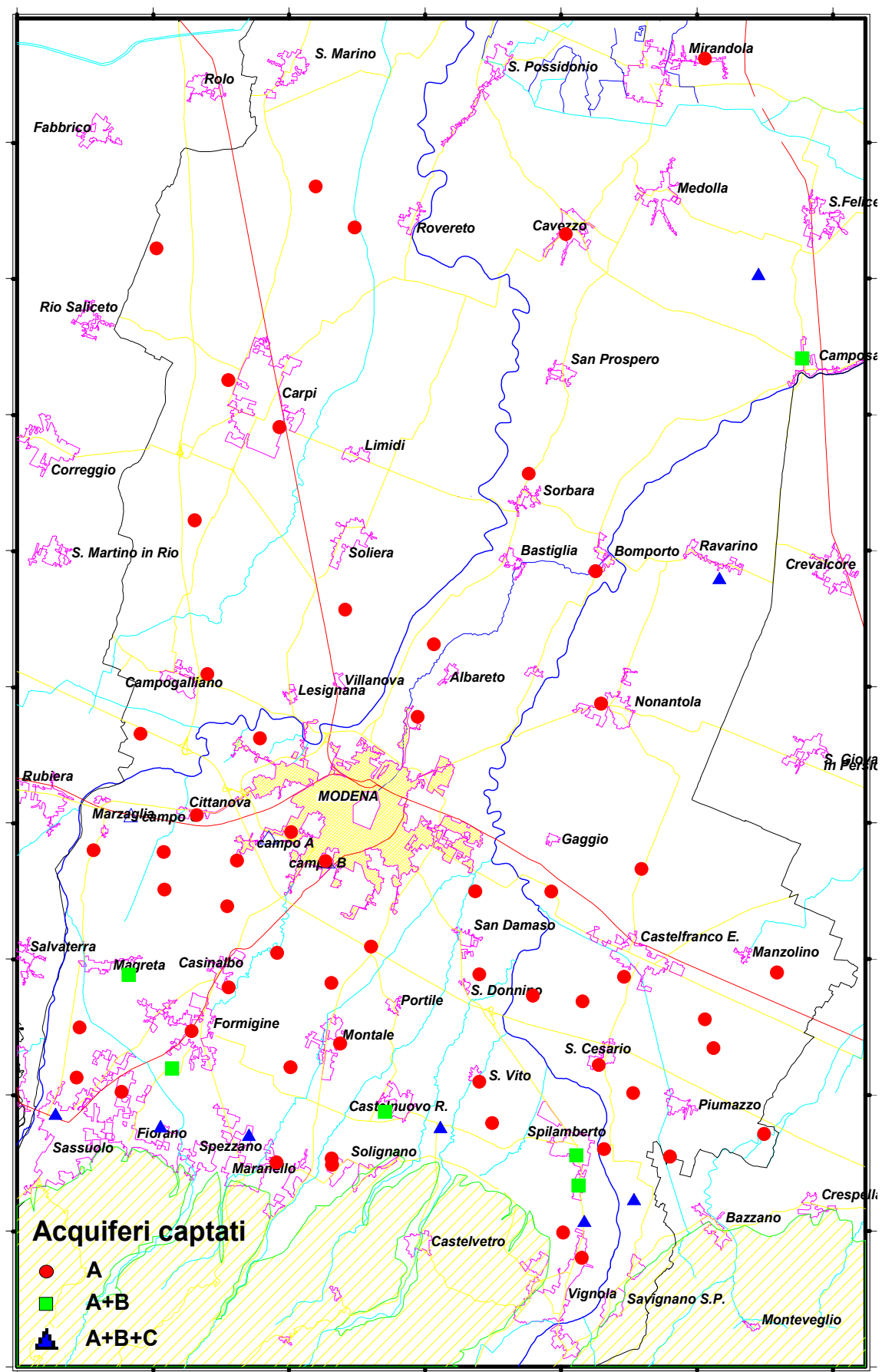


Figura 40 – Acquiferi captati.

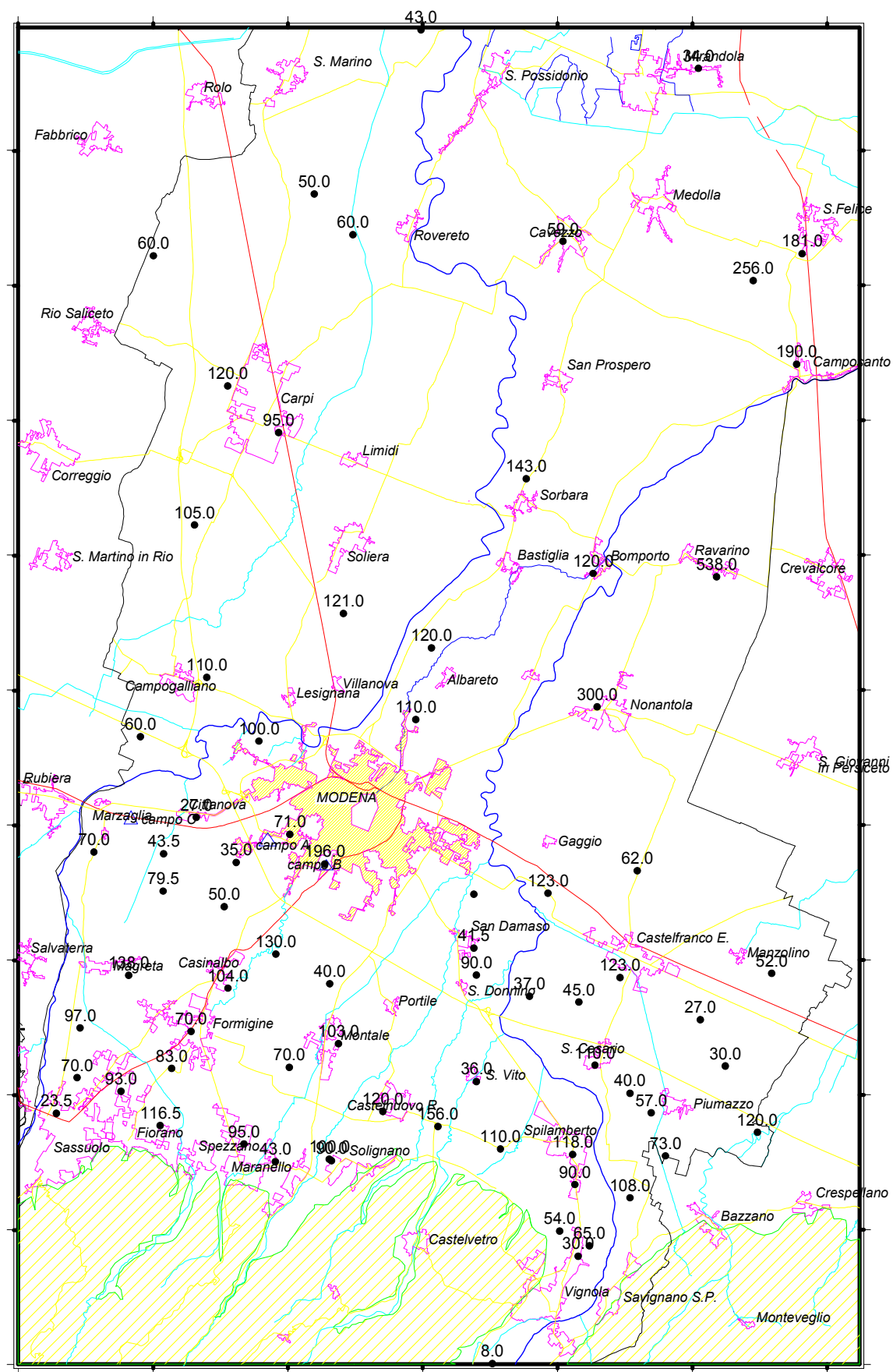


Figura 41 – Profondità (m).

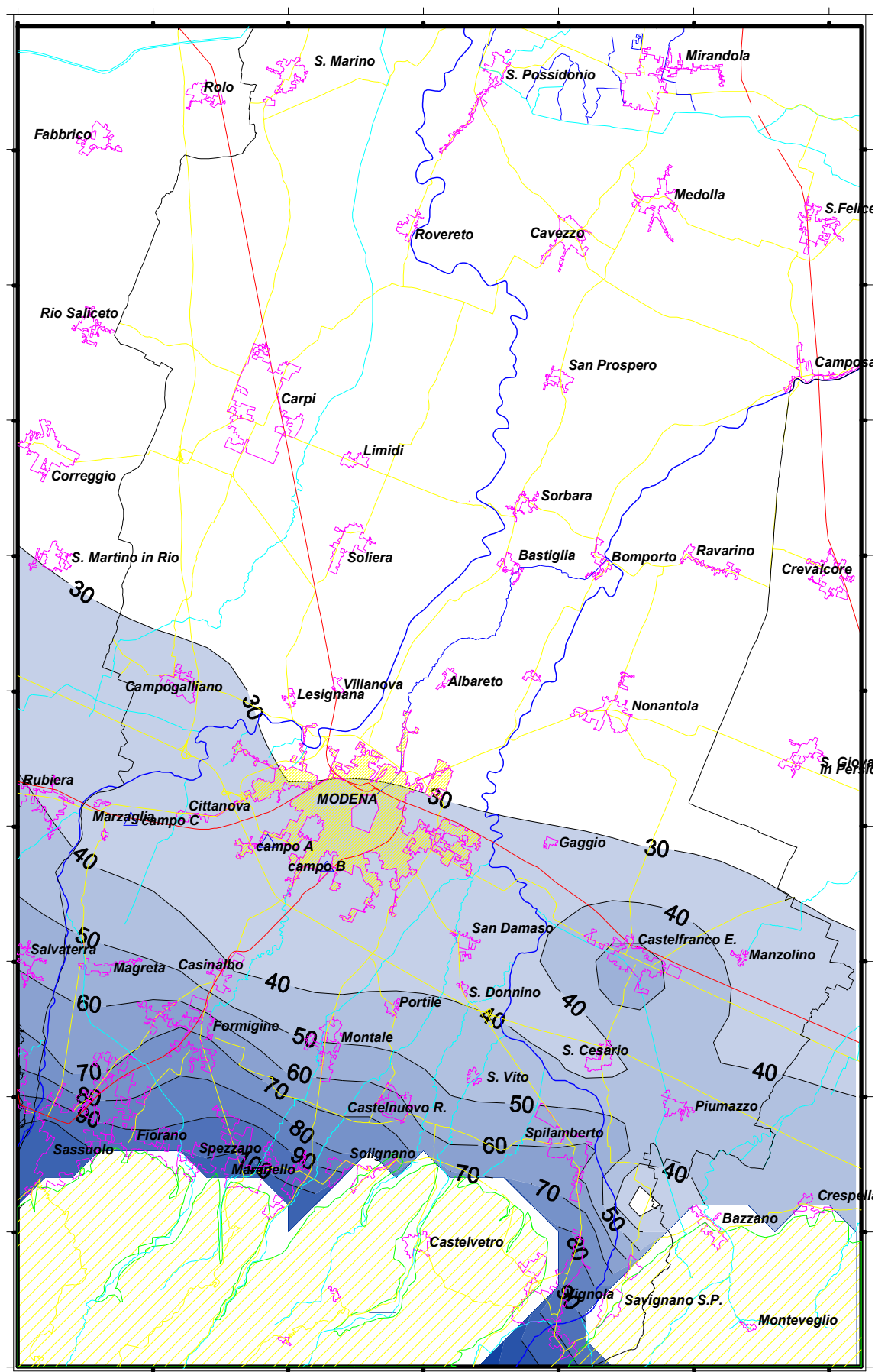


Figura 43 – Piezometria (m. s.l.m.) media anno 2005.

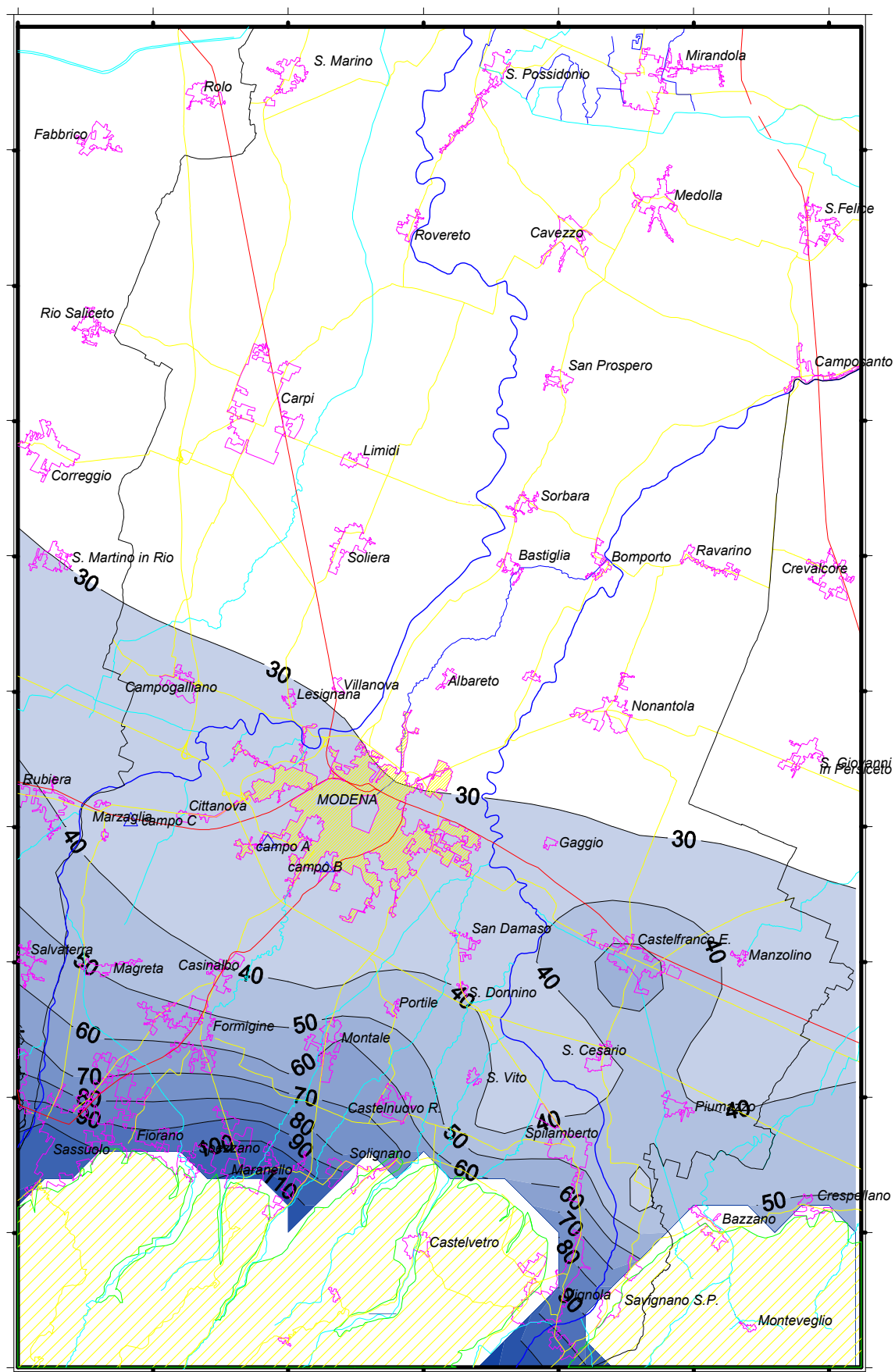


Figura 44 - Piezometria (m. s.l.m.) media anno 2006.

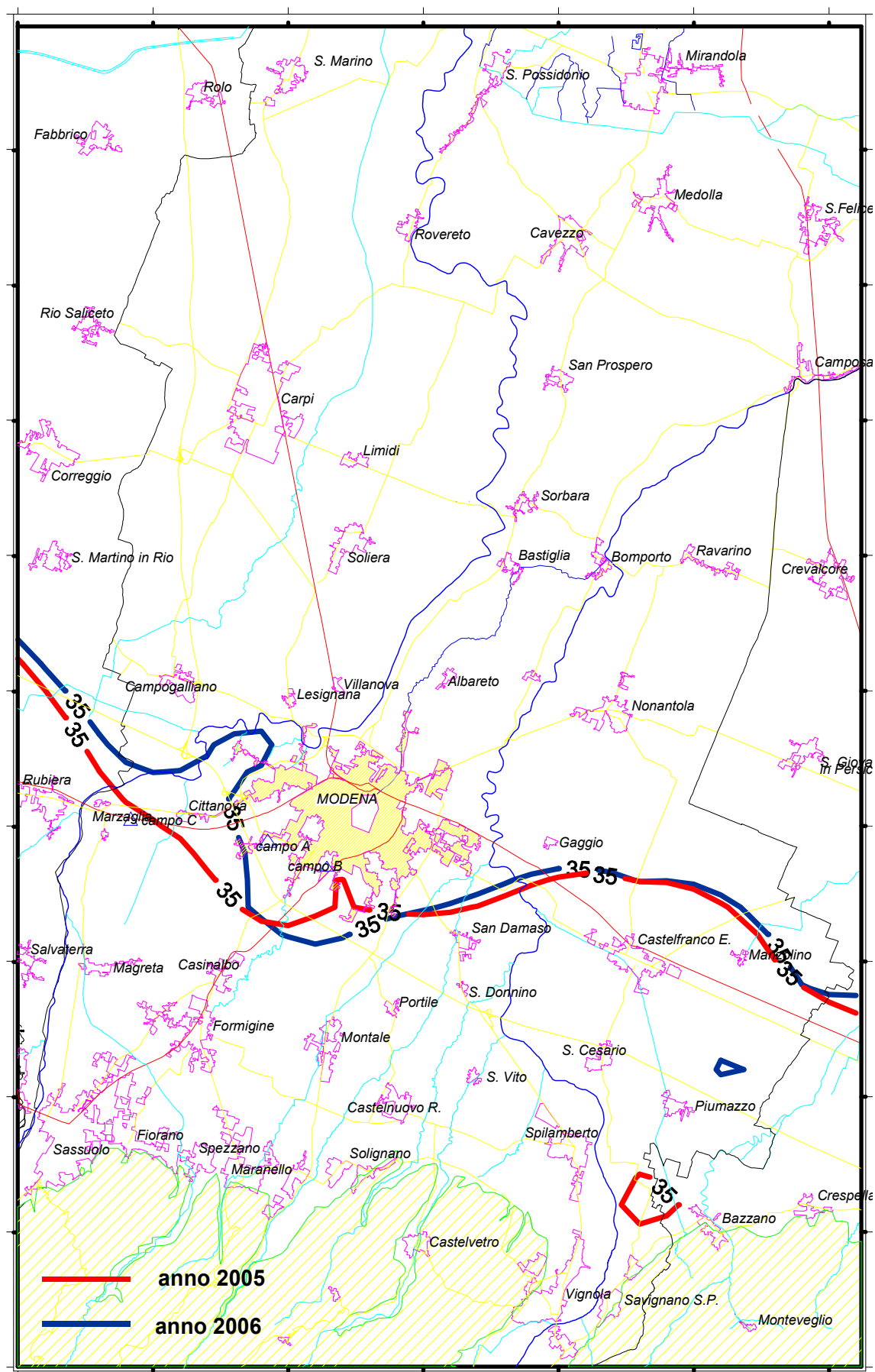


Figura 45 - Piezometria (m. s.l.m.) confronto medie anni 2005 e 2006 - isopieze dei 35 m.

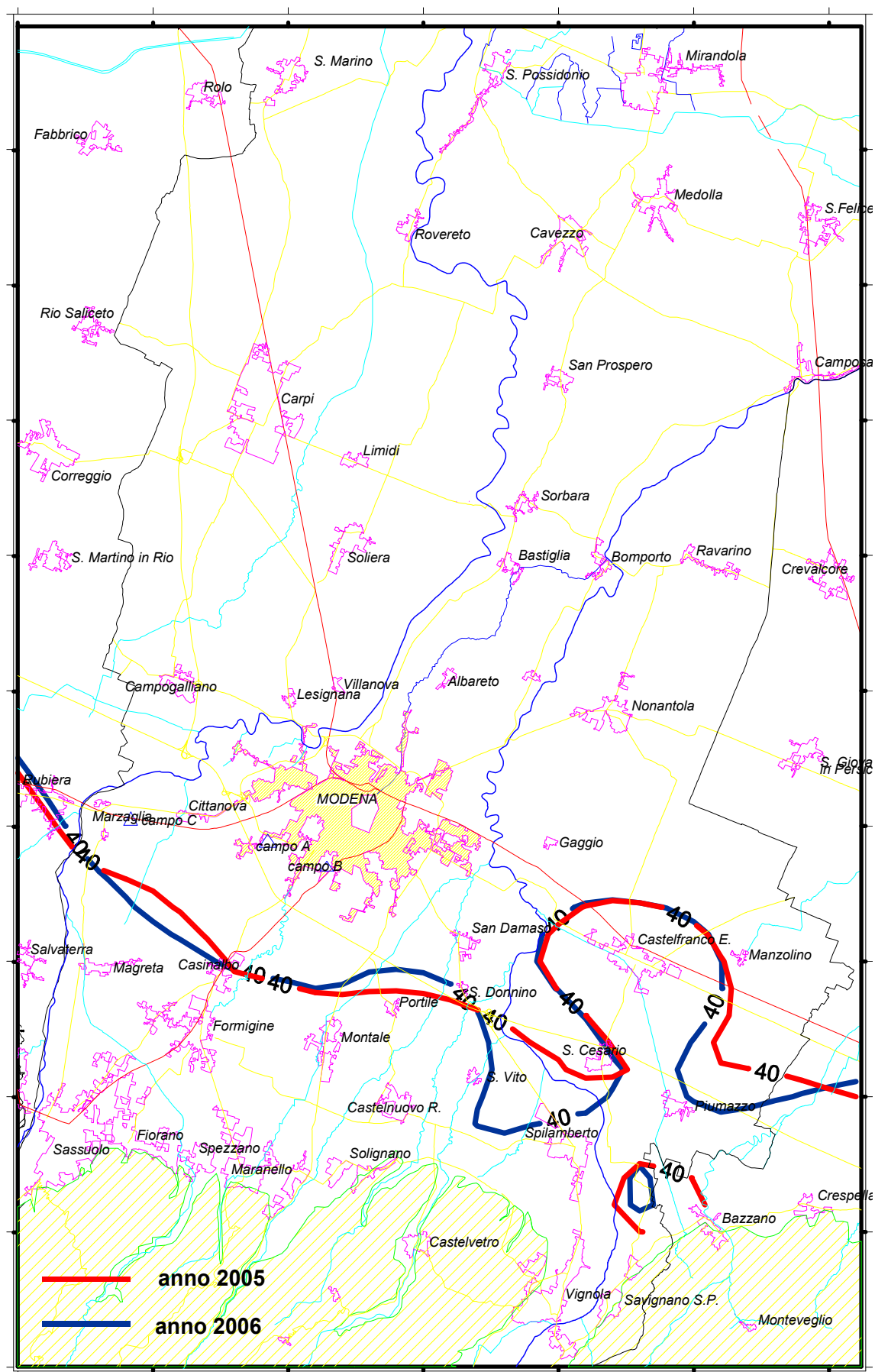


Figura 46 – Piezometria (m. s.l.m.) confronto medie anni 2005 e 2006 - isopieze dei 40 m.

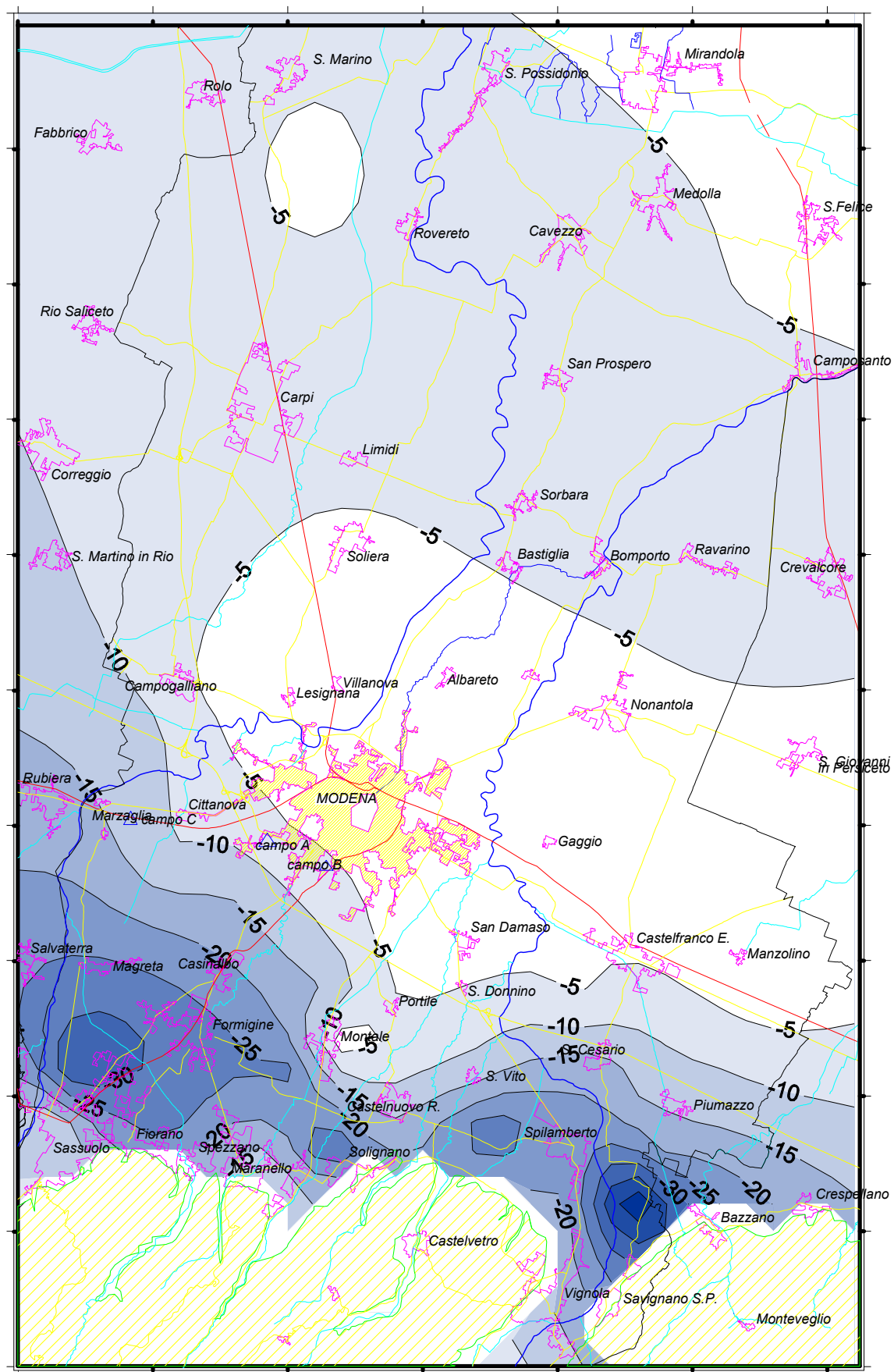


Figura 47 – Soggiacenza (m) media anno 2006.

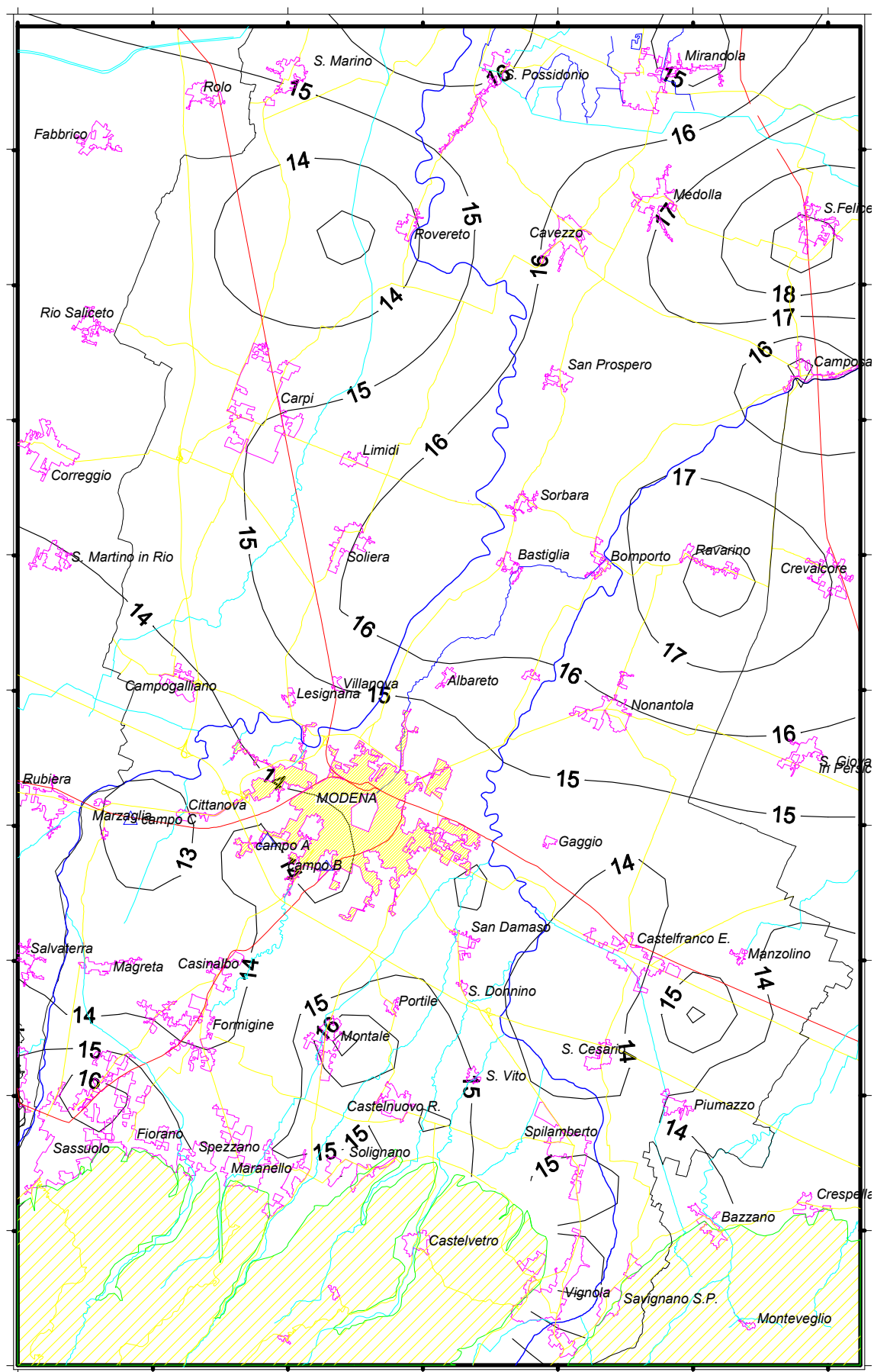


Figura 48 – Temperatura (°C) media anno 2006.

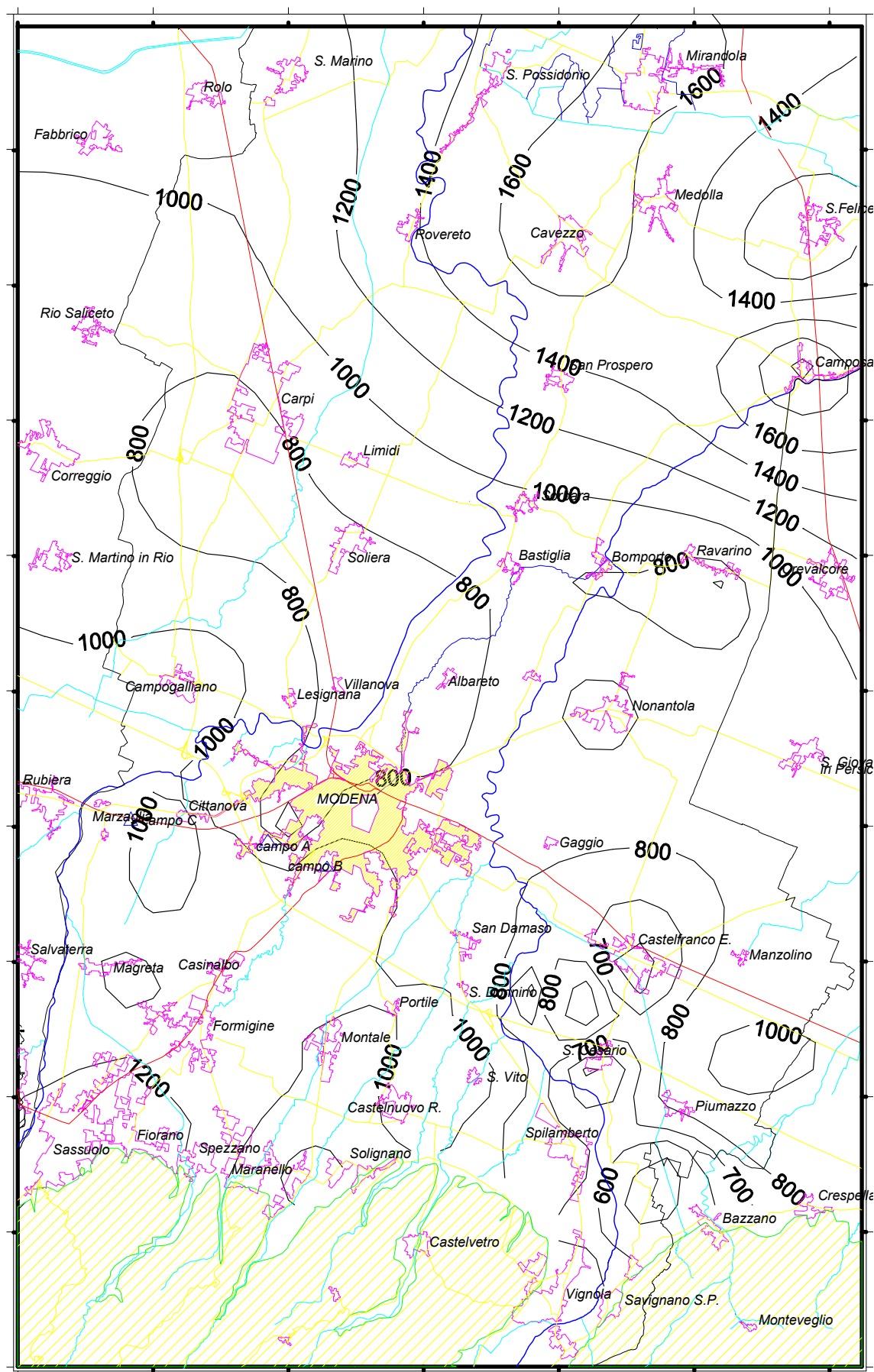
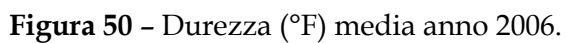


Figura 49 – Conducibilità ($\mu\text{S}/\text{cm}$) media anno 2006.



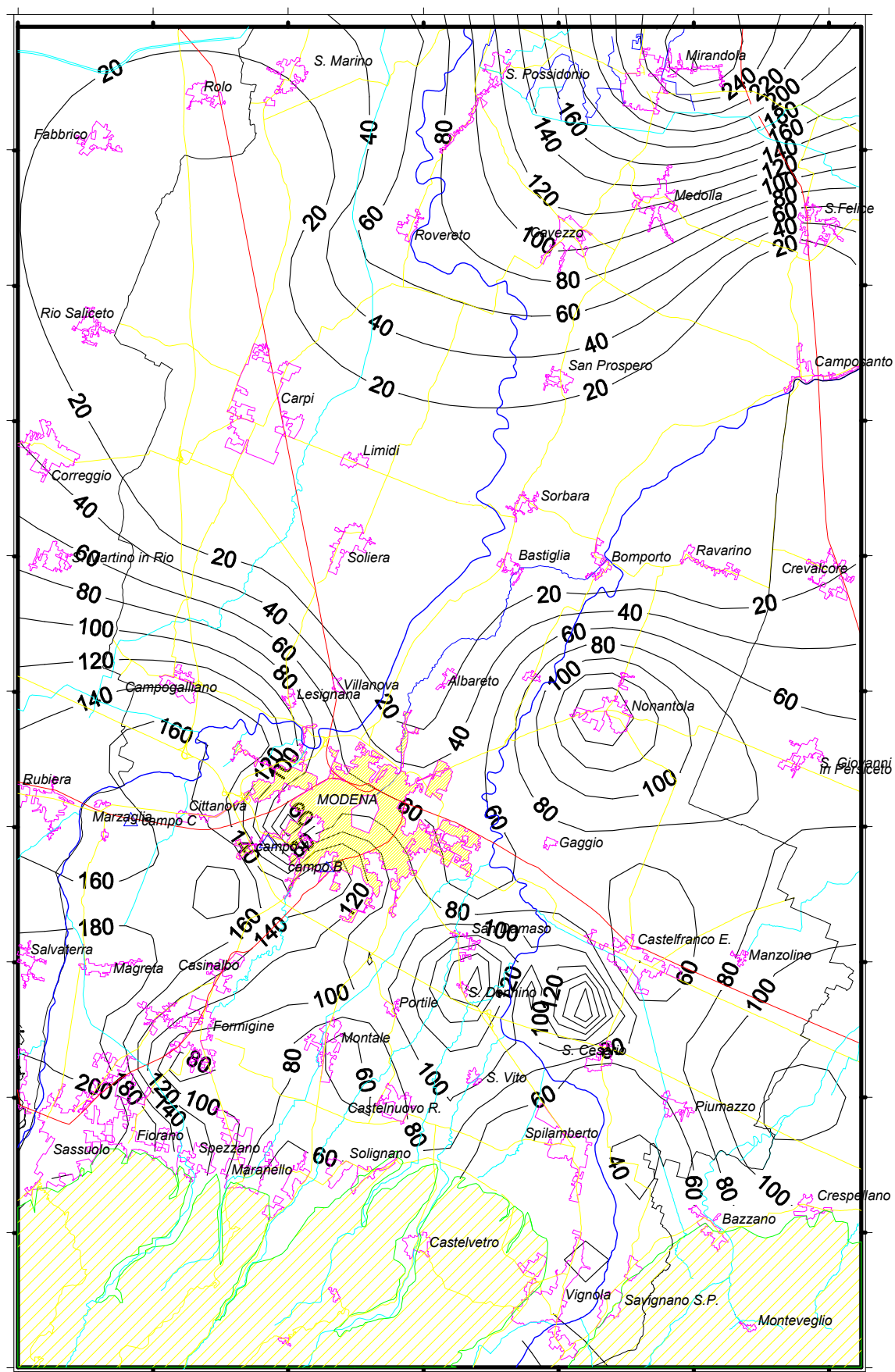


Figura 51 - Solfati (mg/l) media anno 2006.

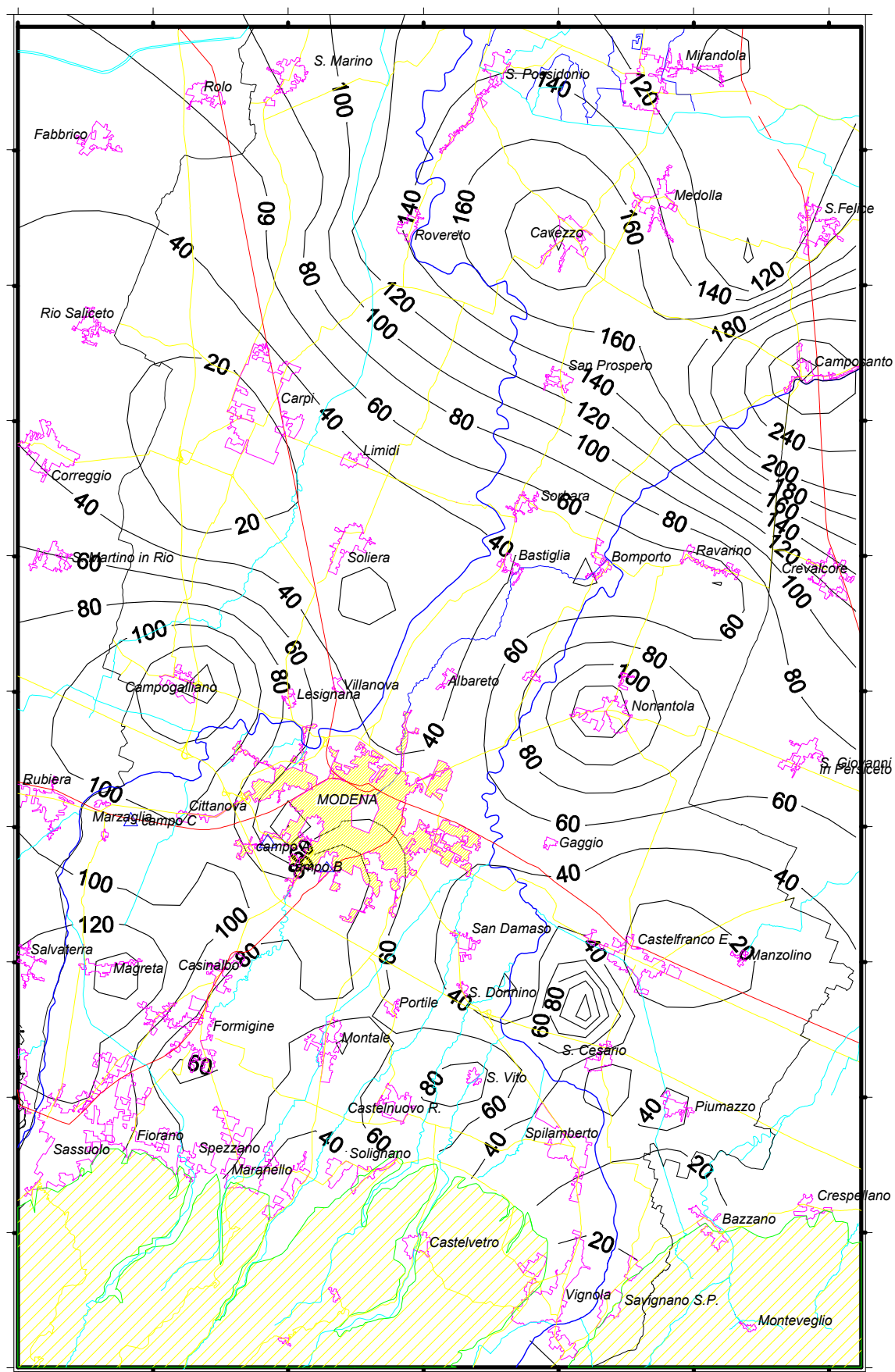


Figura 52 - Cloruri (mg/l) media anno 2006.

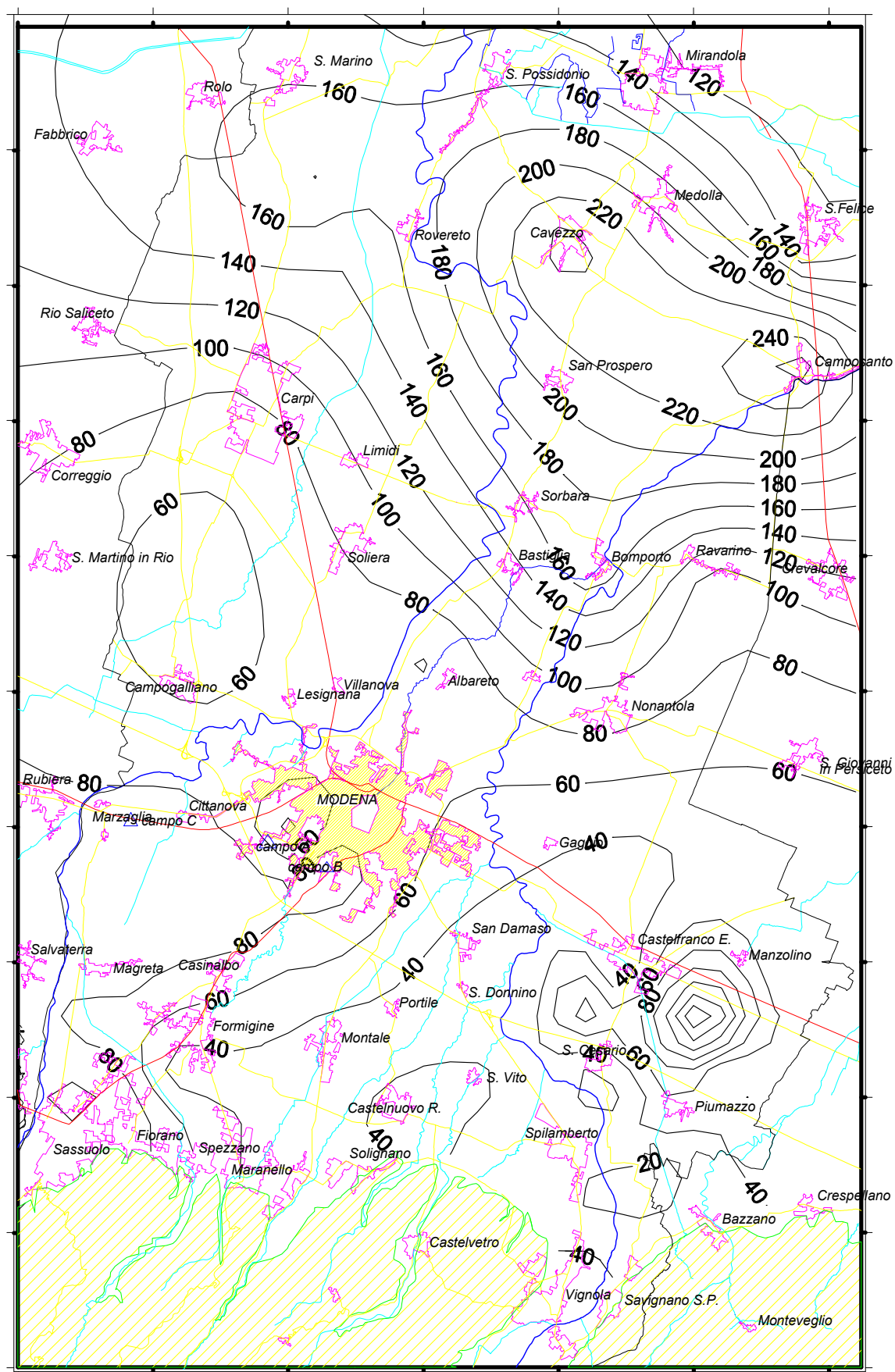


Figura 53 - Sodio (mg/l) media anno 2006.

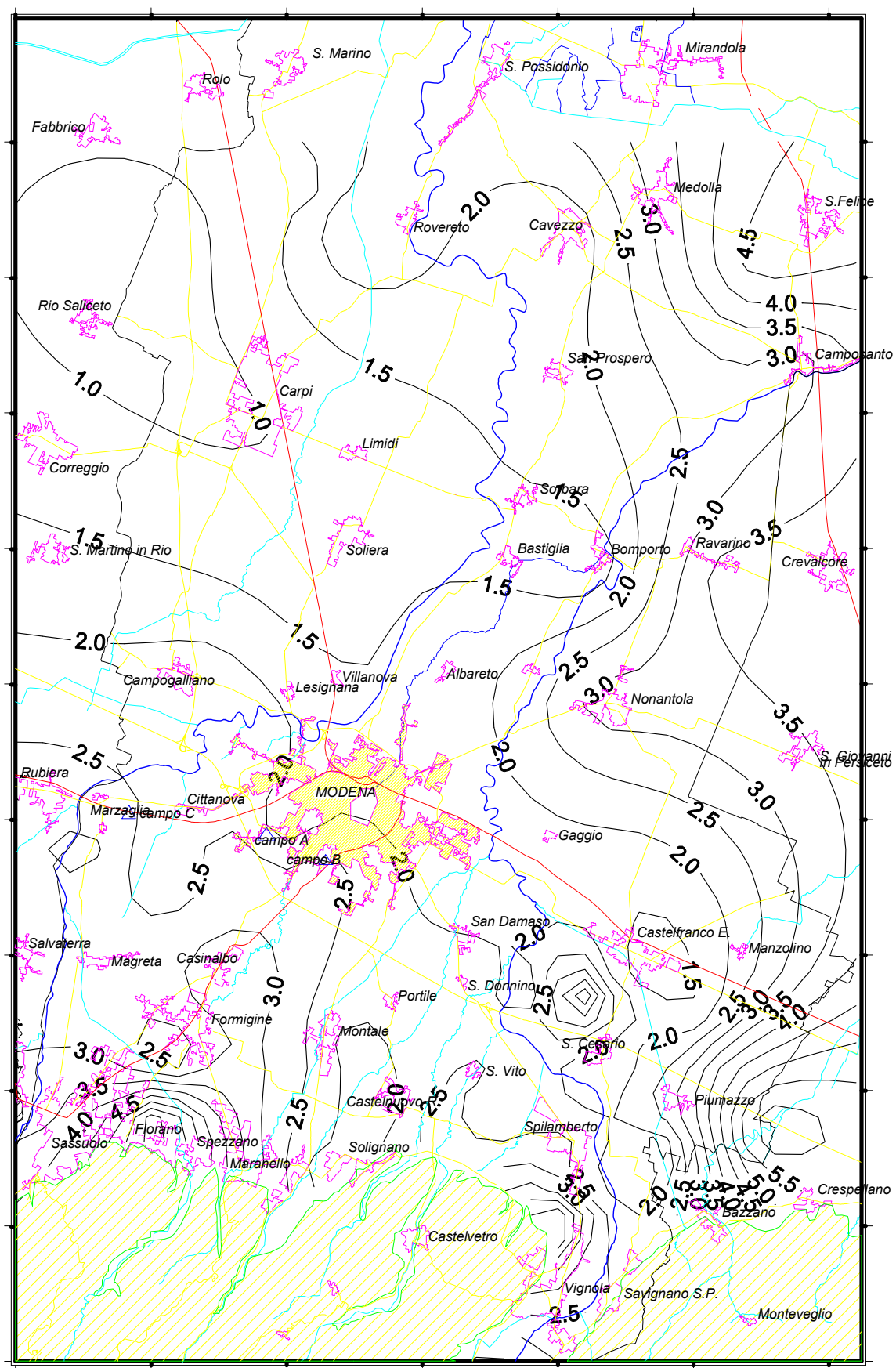
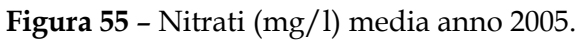


Figura 54 - Potassio (mg/l) media anno 2006.



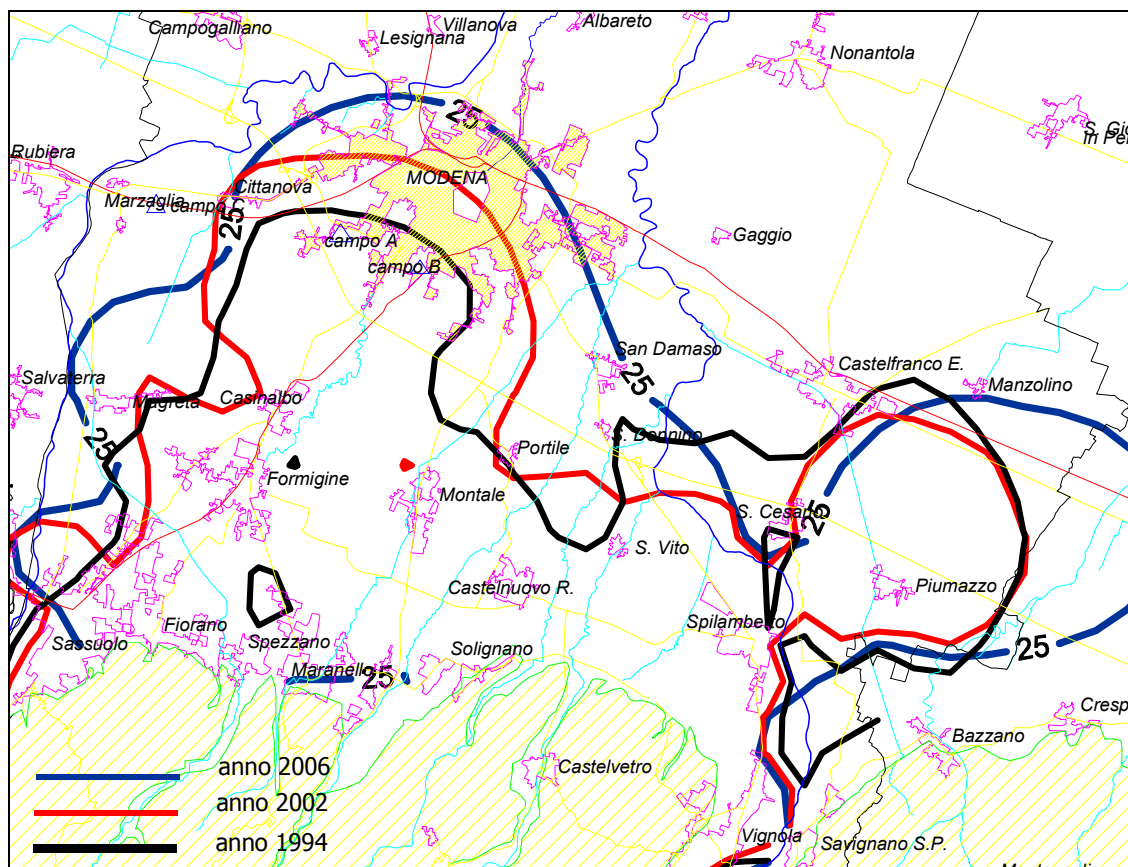


Figura 57 - Nitrati (mg/l) confronto medie anni 1994, 2002 e 2006 - isocone dei 25 mg/l.

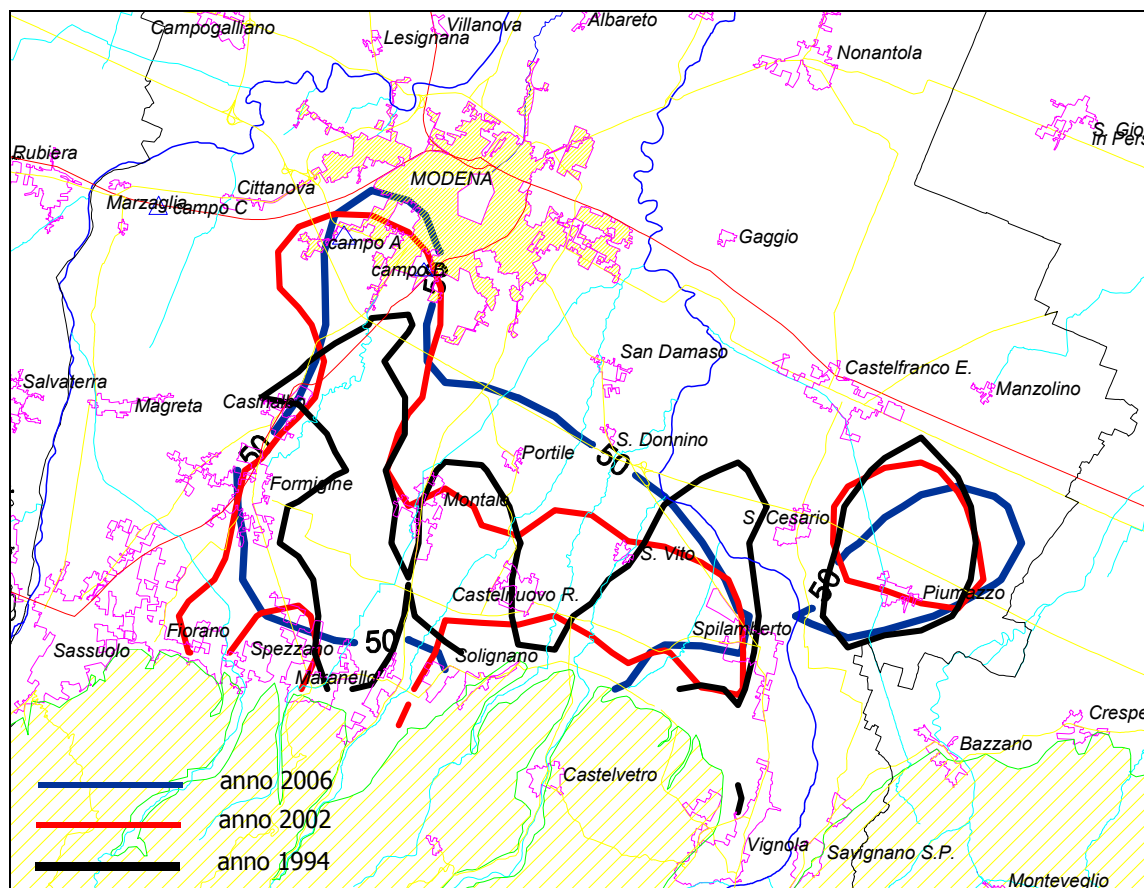


Figura 58 - Nitrati (mg/l) confronto medie anni 1994, 2002 e 2006 - isocone dei 50 mg/l.

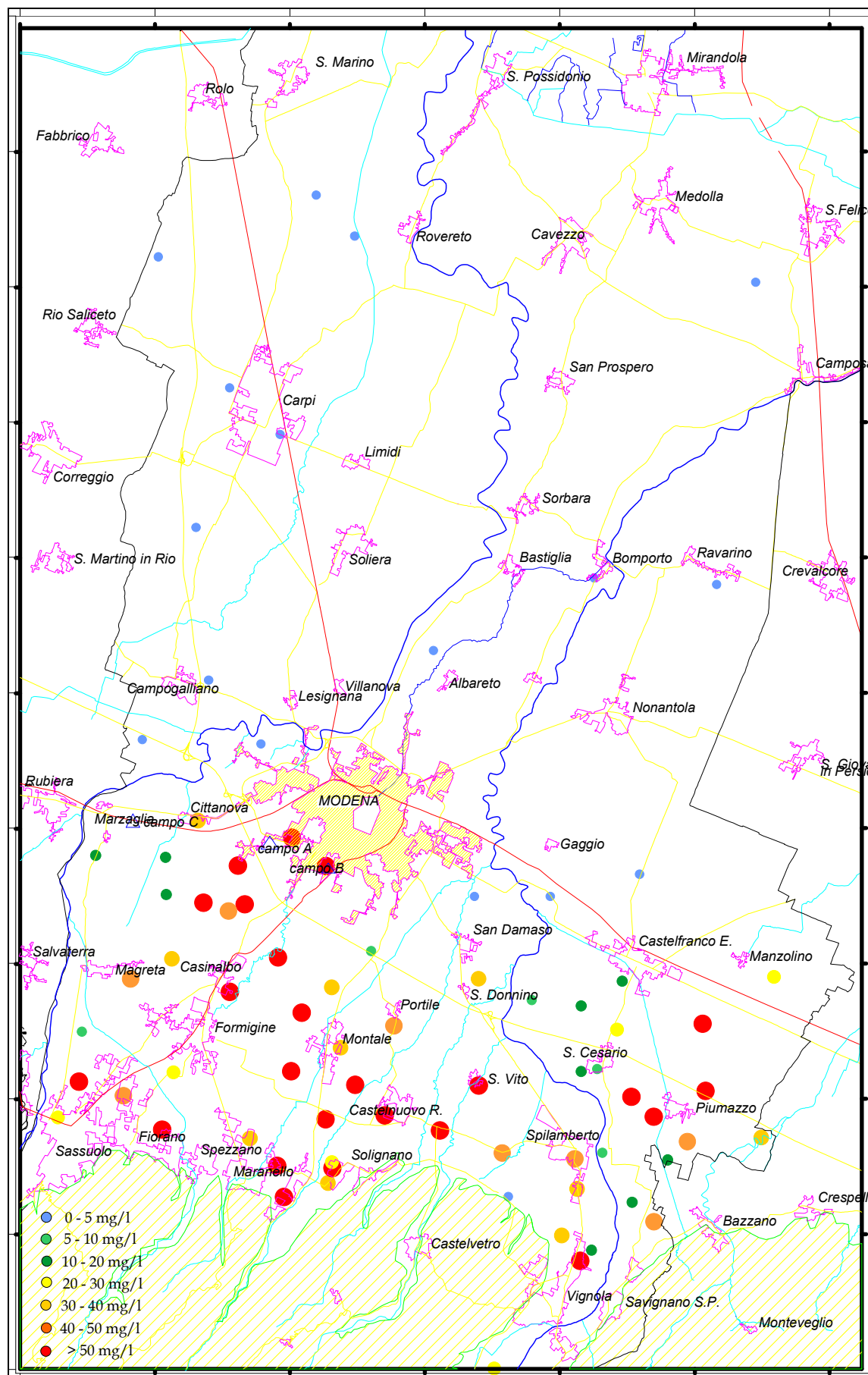


Figura 59 – Concentrazione dei nitrati per singolo pozzo media anno 2005.

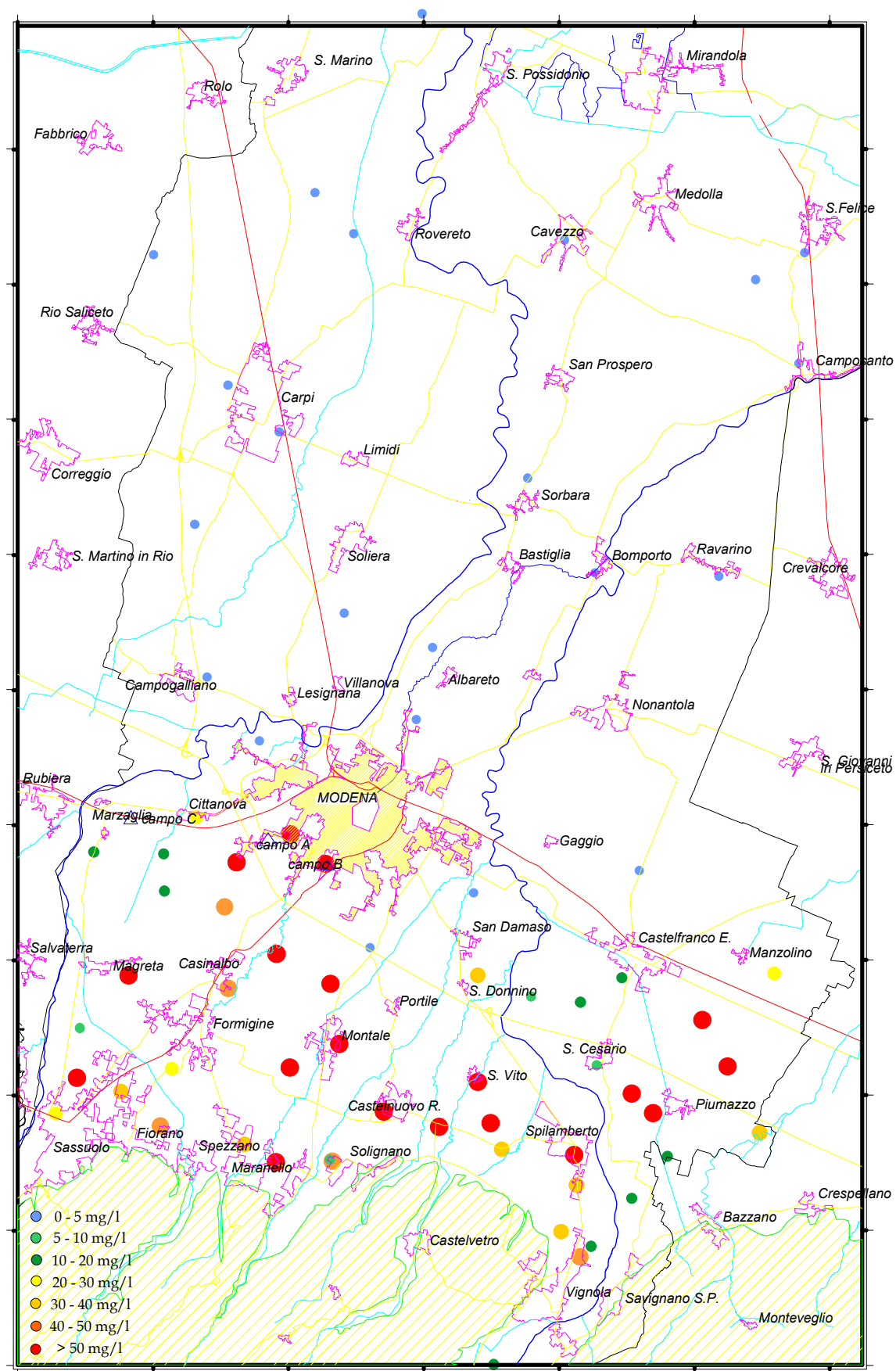


Figura 60 – Concentrazione dei nitrati per singolo pozzo media anno 2006.

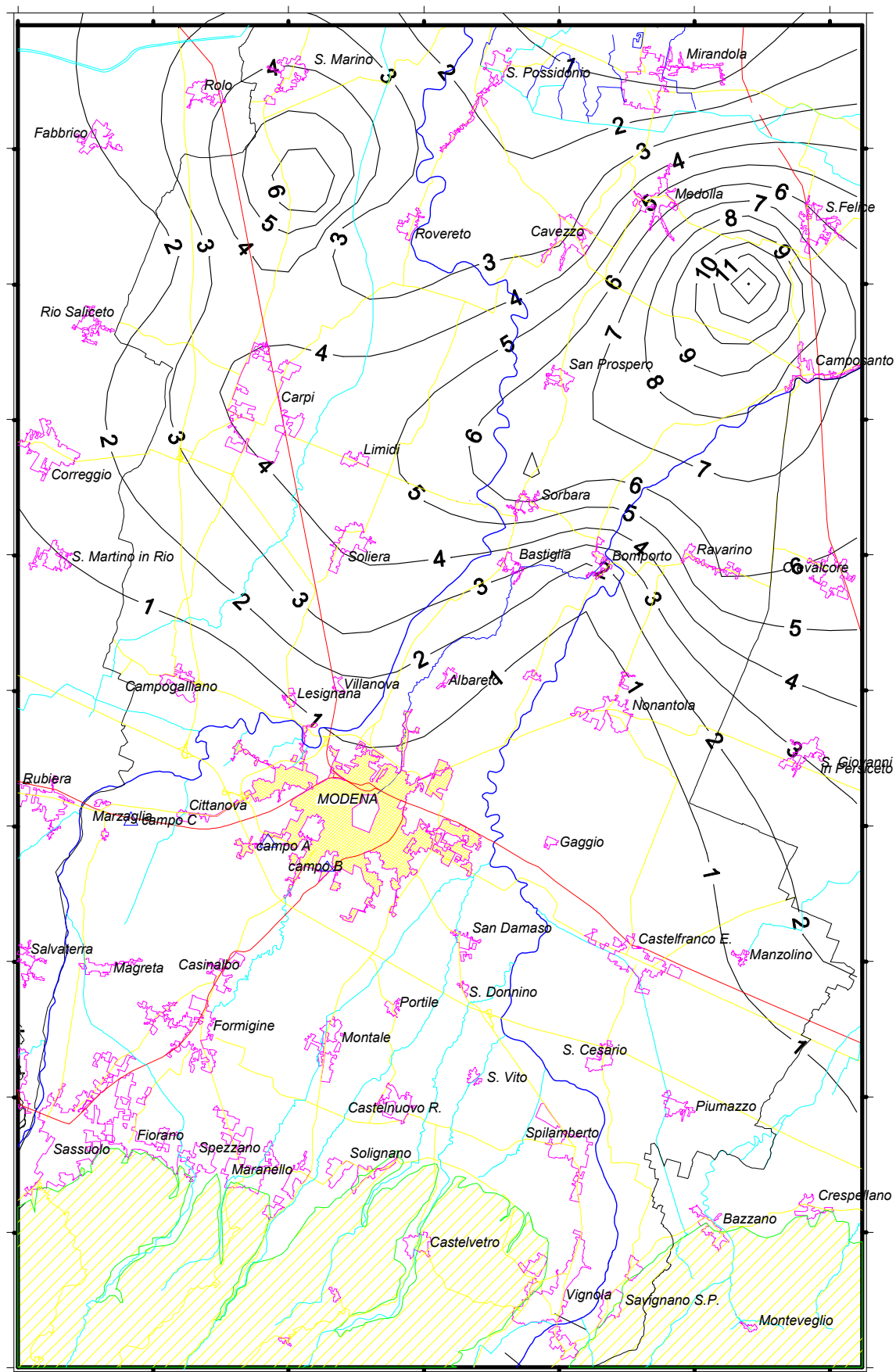


Figura 61 – Ammoniaca (mg/l) media anno 2006.

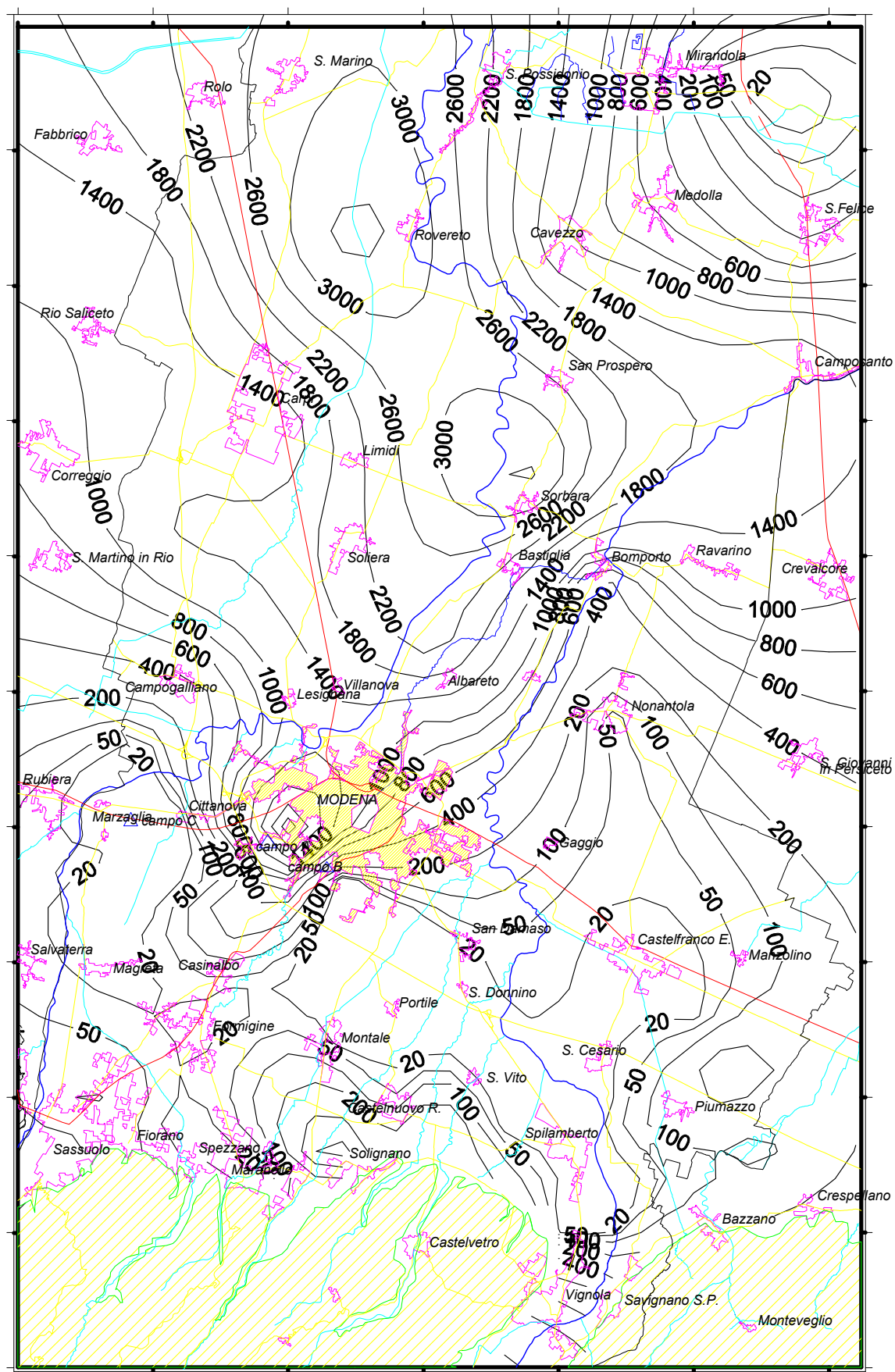


Figura 62 - Ferro ($\mu\text{g/l}$) media anno 2006.

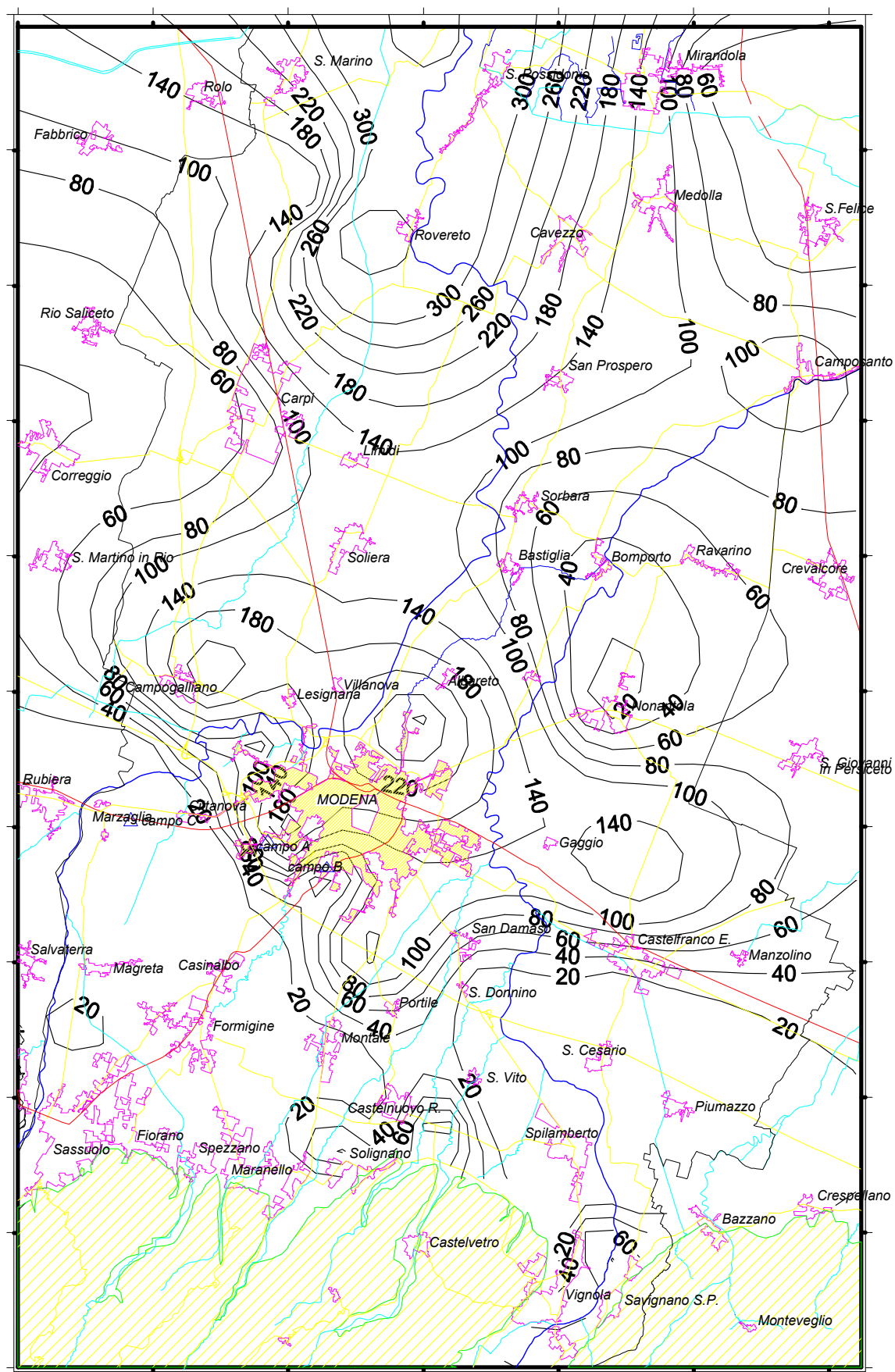
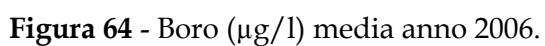


Figura 63 - Manganese ($\mu\text{g/l}$) media anno 2006.



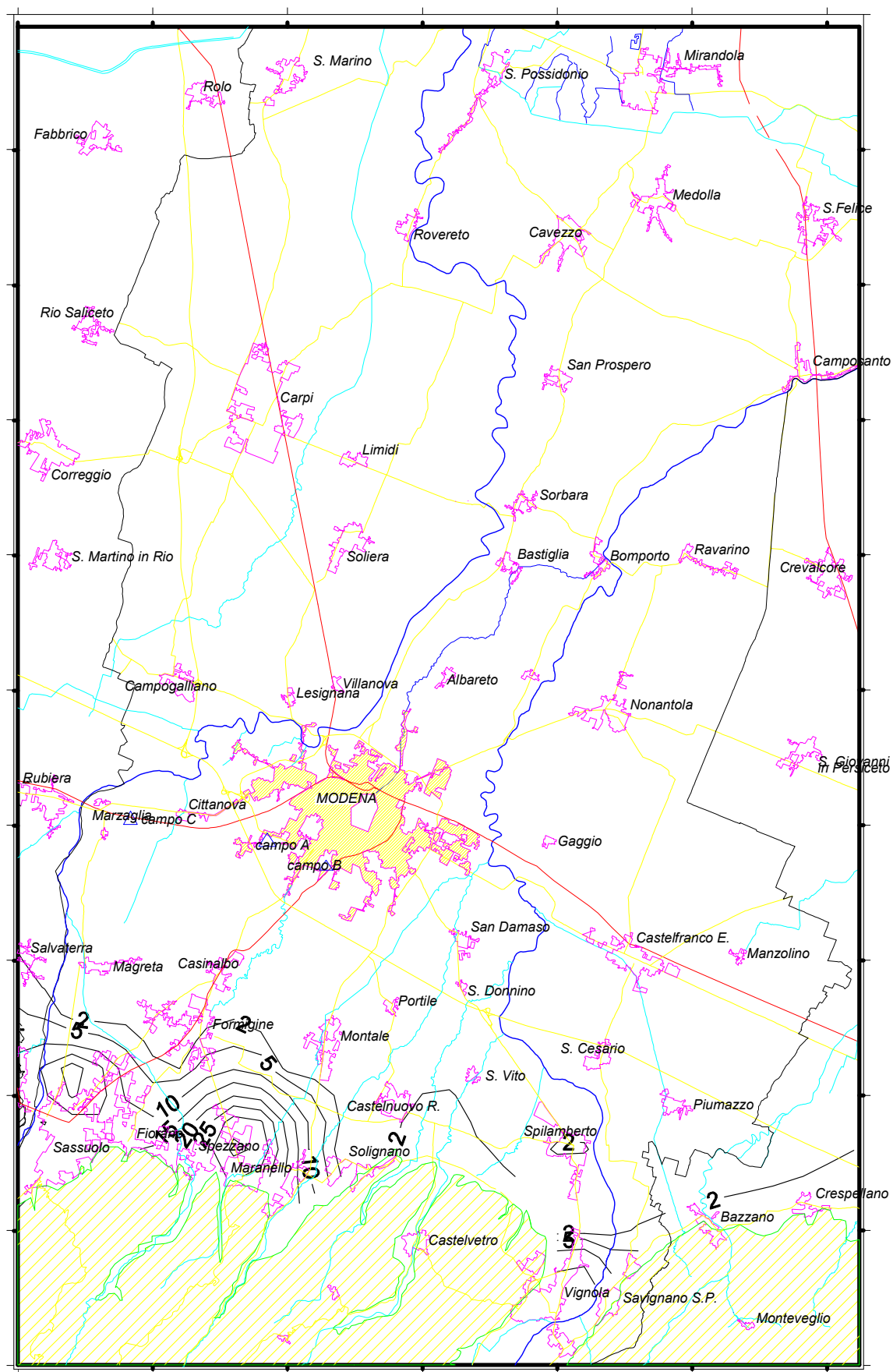


Figura 65 – Composti organo-alogenati totali ($\mu\text{g/l}$) media anno 2006.

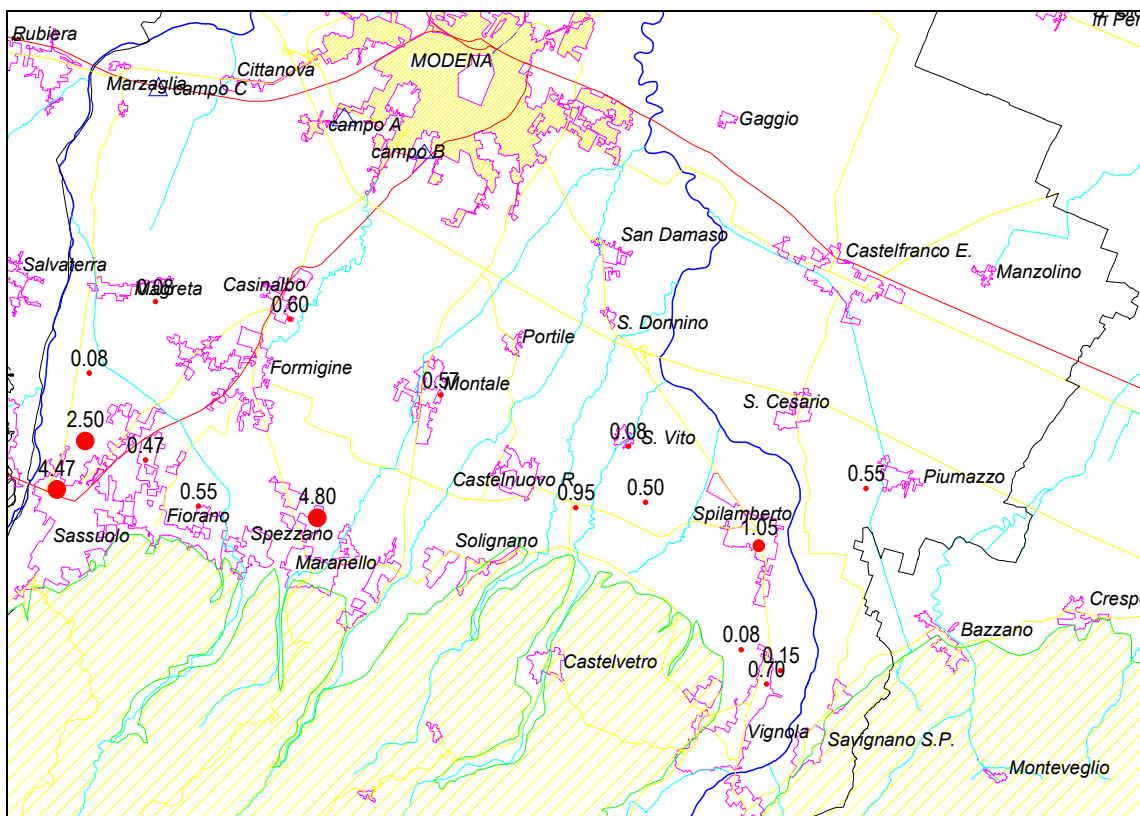


Figura 66 – Tricloroetilene media anno 2006.

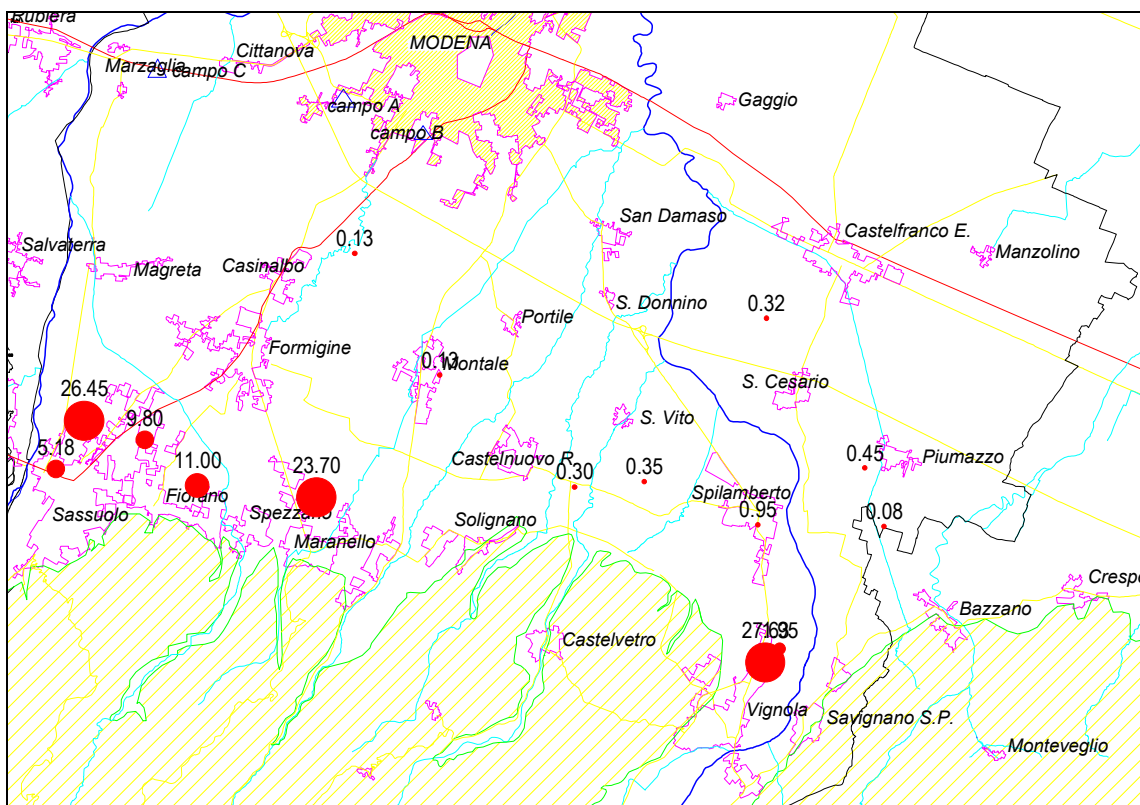


Figura 67 - Tetracloroetilene media anno 2006.

