

Figura 16 - Cloruri (mg/l) media anno 2002.

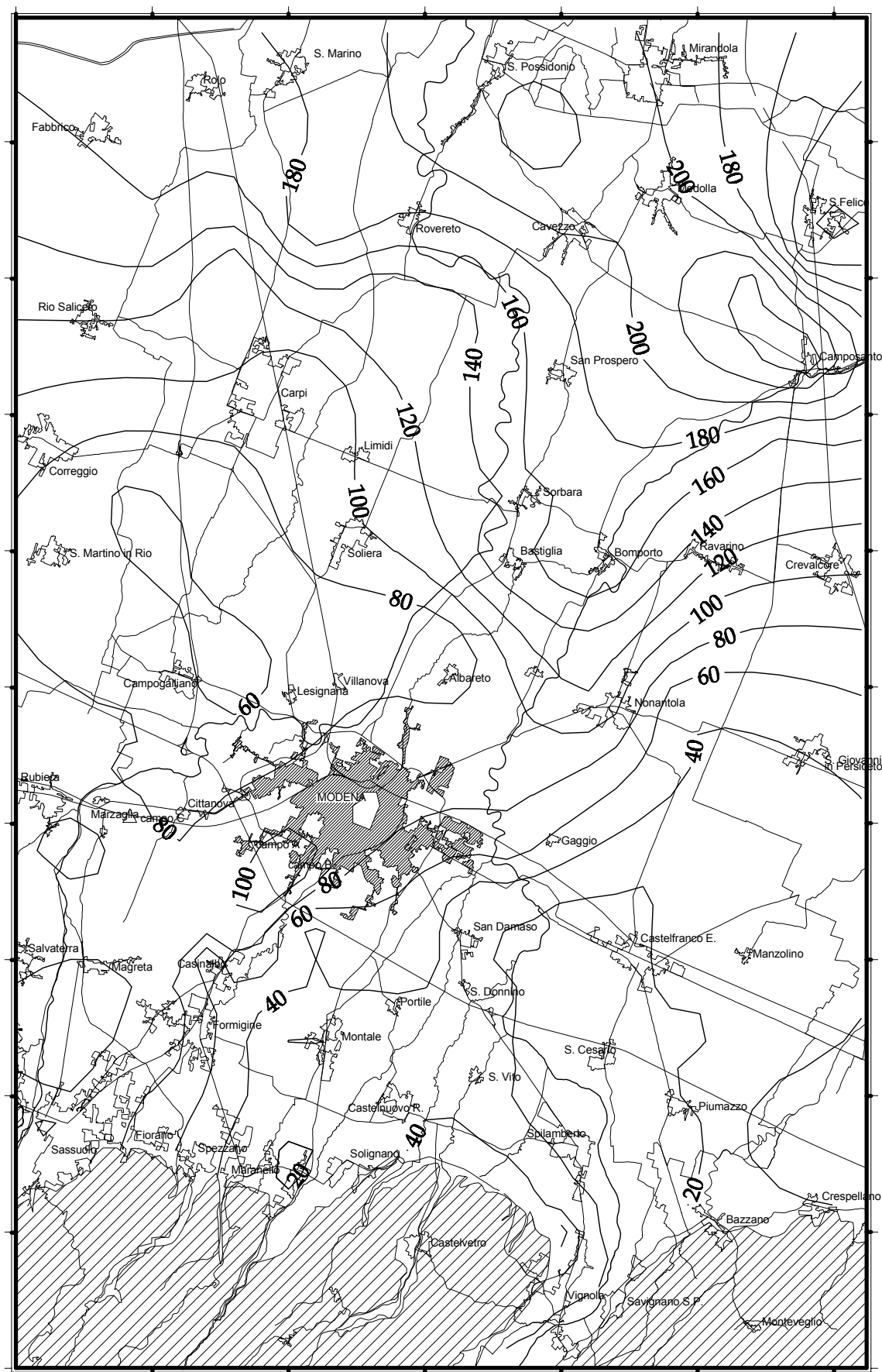


Figura 17 - Sodio (mg/l) media anno 2002.

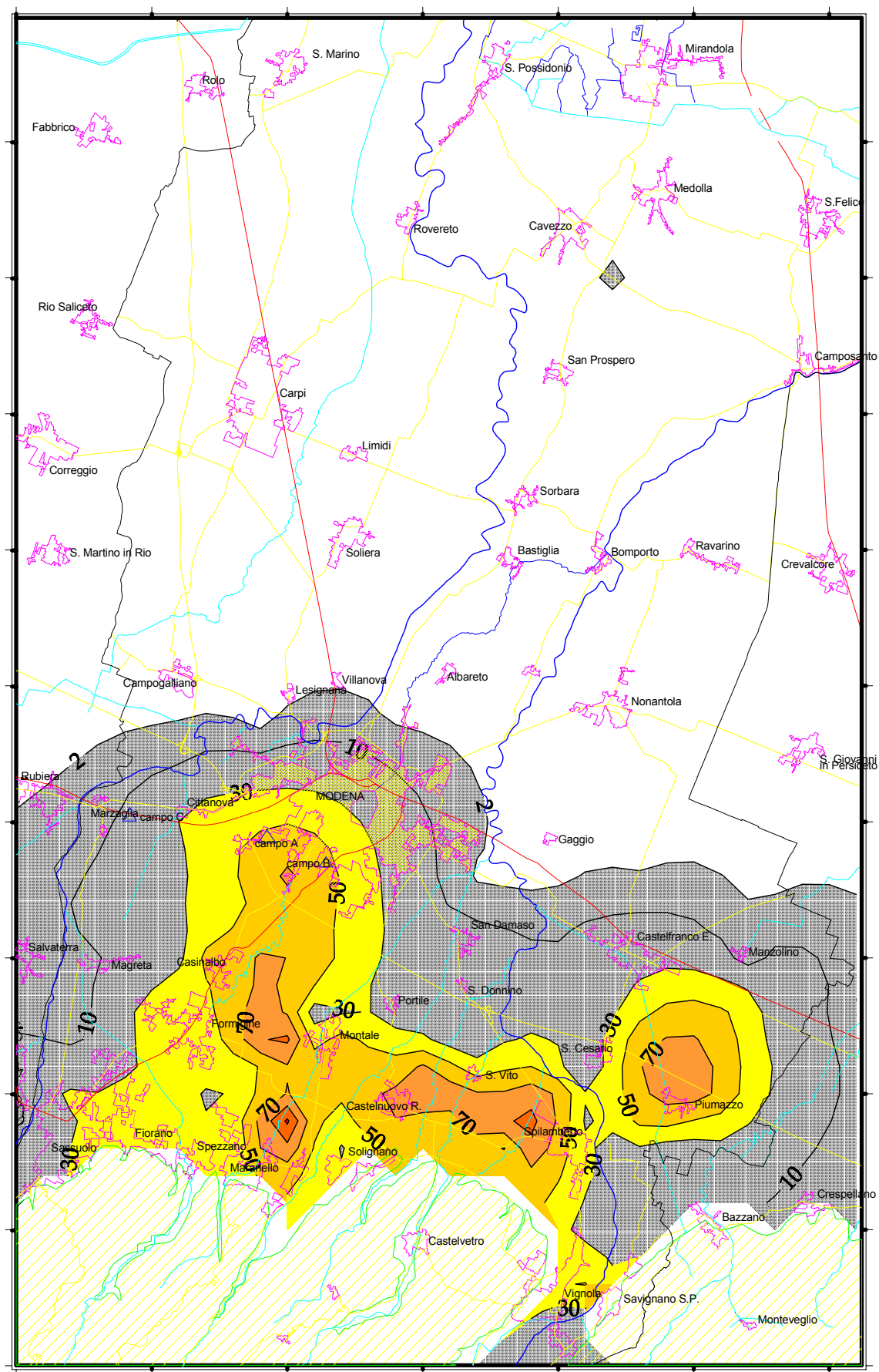


Figura 18 - Nitrati (mg/l) media anno 2001.

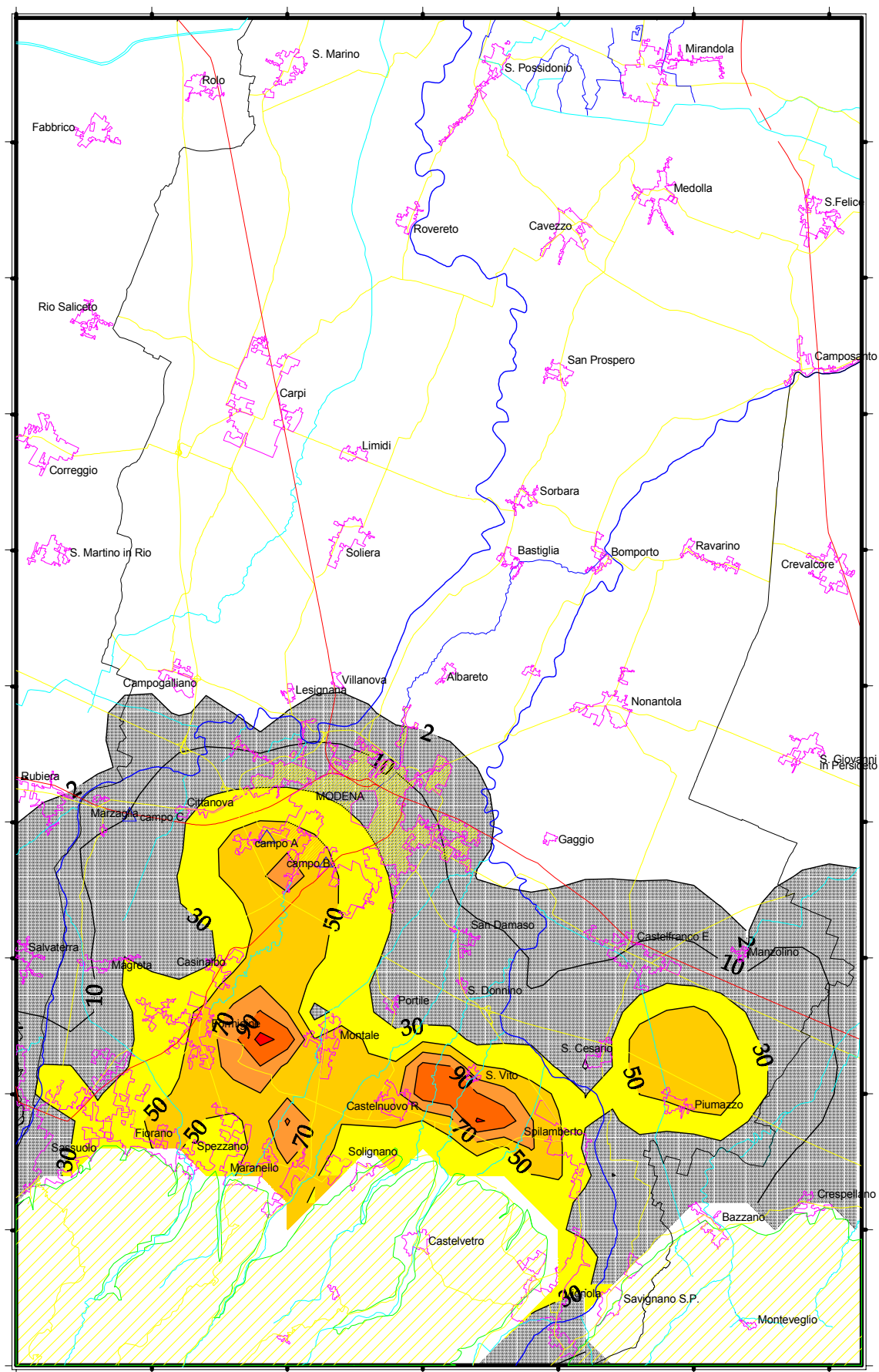


Figura 19 - Nitrati (mg/l) media anno 2002.

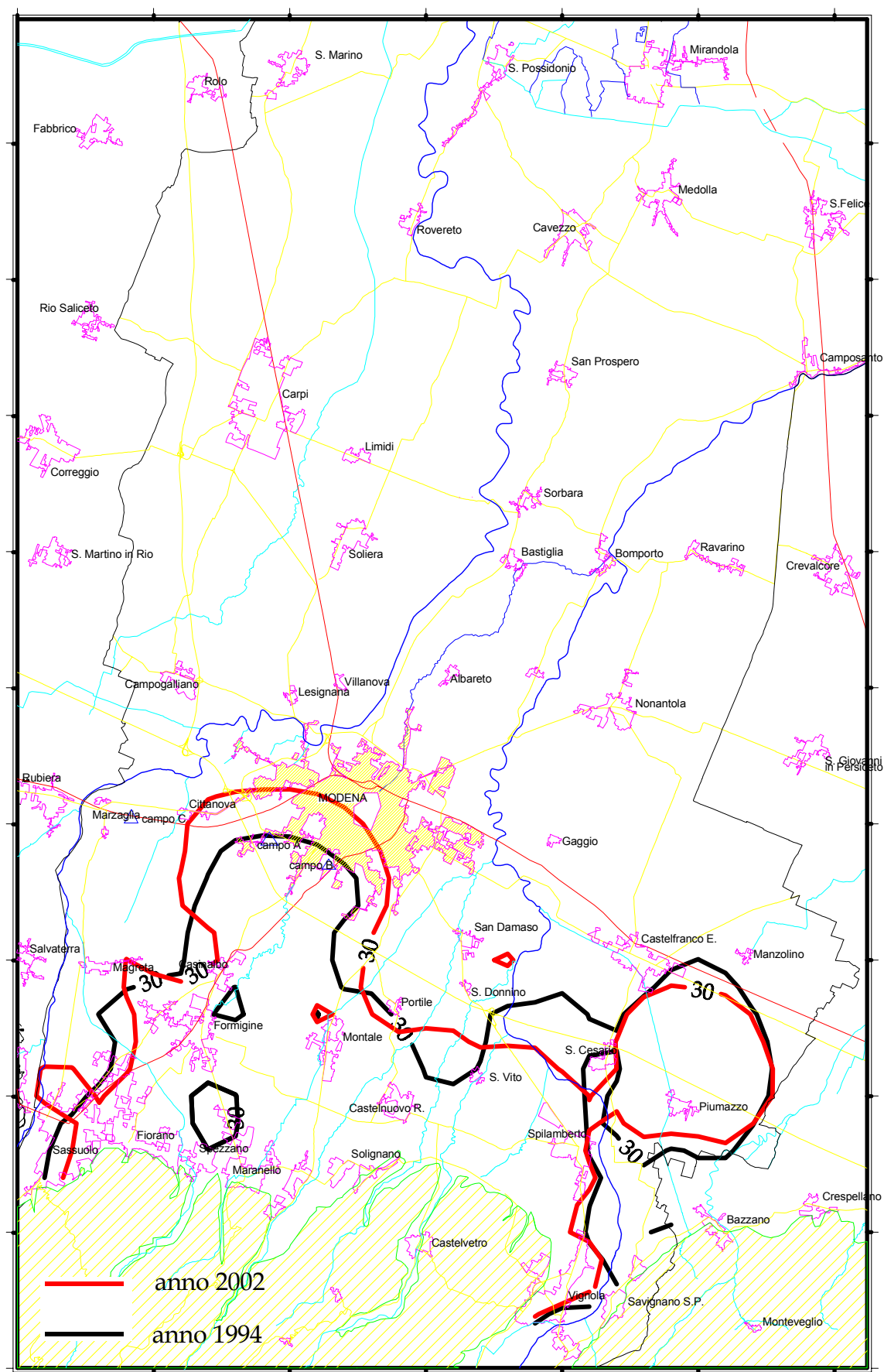


Figura 20 - Nitrati (mg/l) confronto medie anni 1994 e 2002 - isocone dei 30 mg/l.

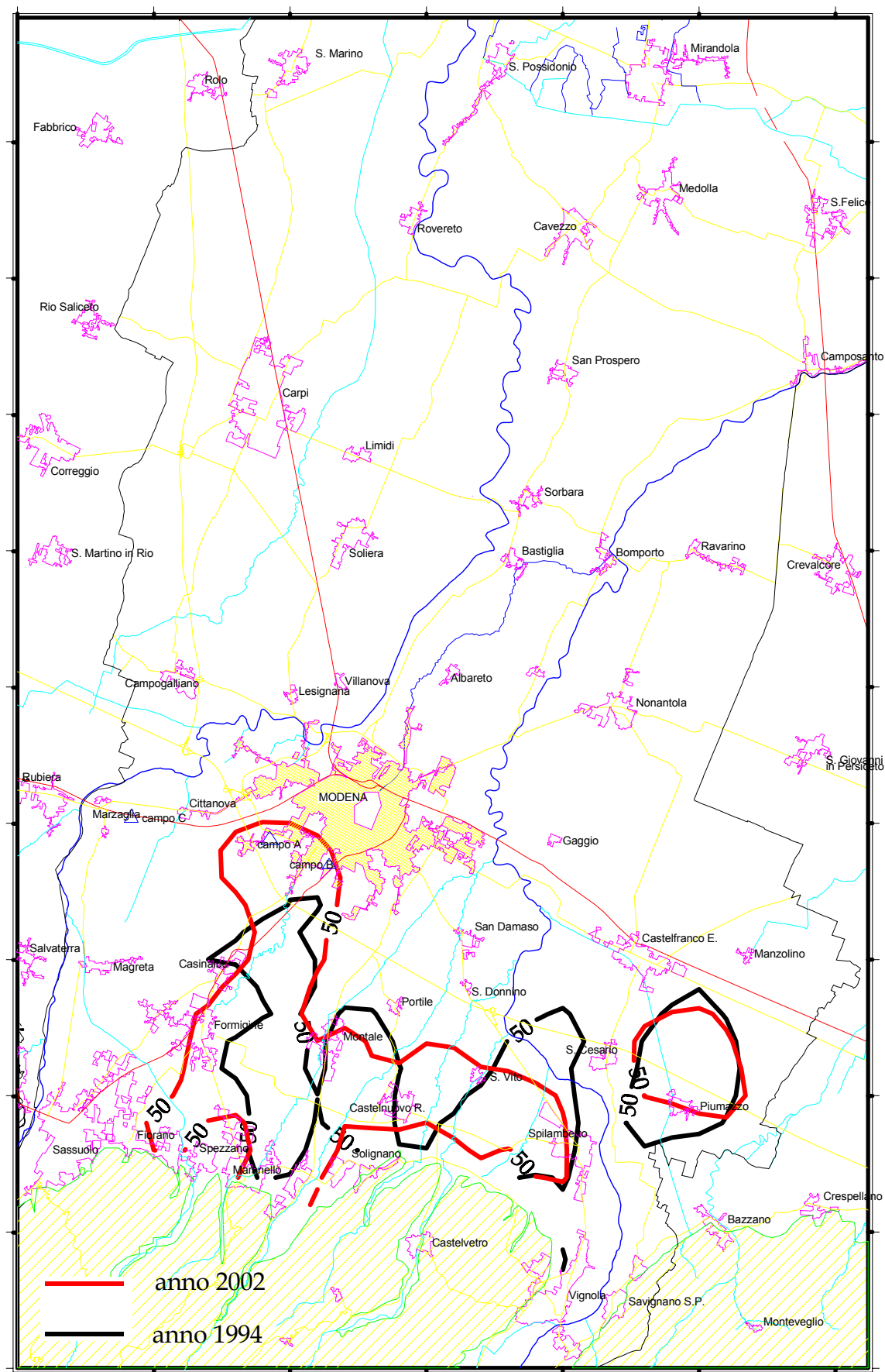
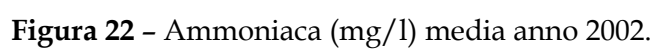


Figura 21 - Nitrati (mg/l) confronto medie anni 1994 e 2002 - isocone dei 50 mg/l.



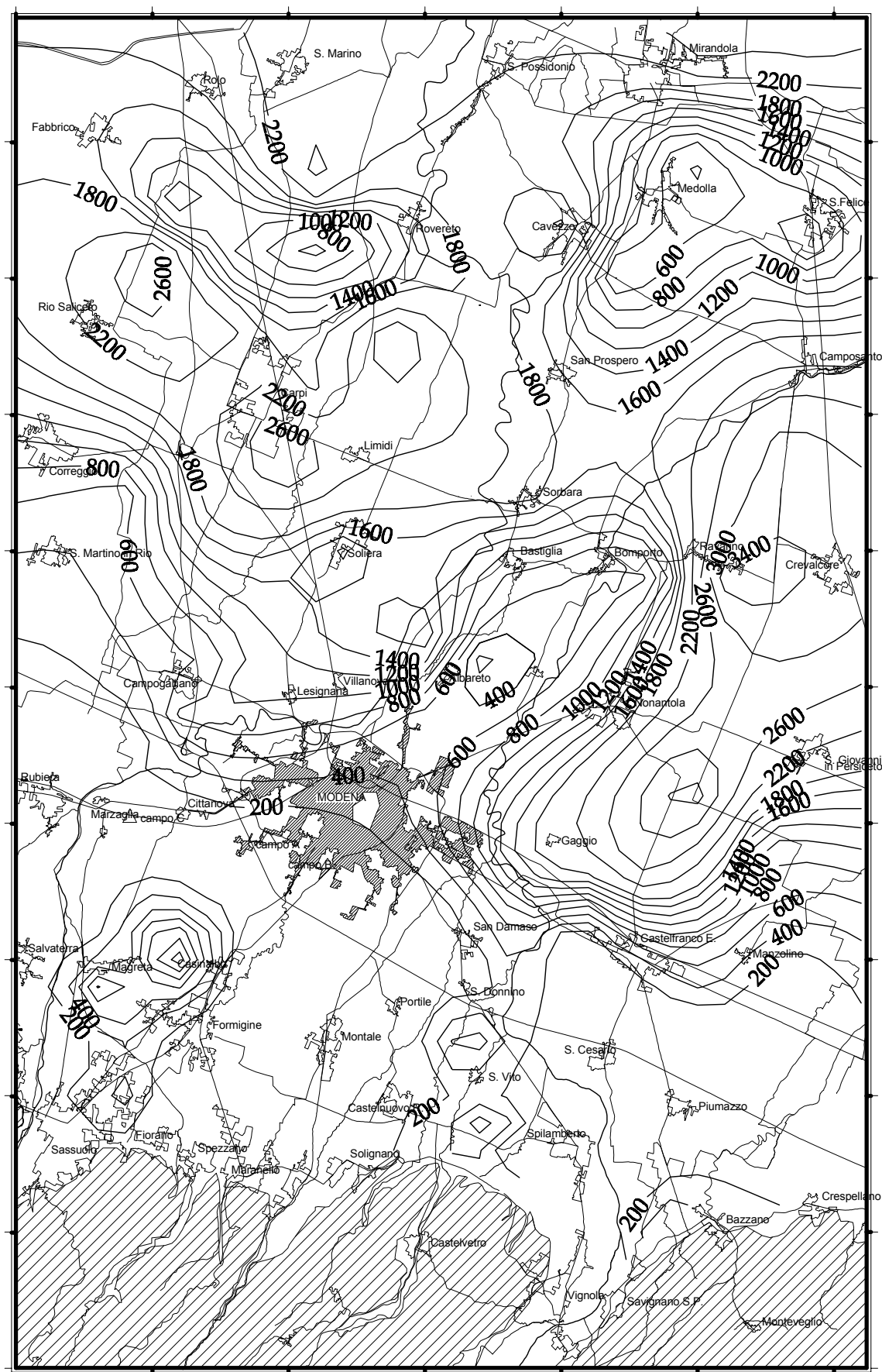


Figura 23 - Ferro ($\mu\text{g/l}$) media anno 2002.

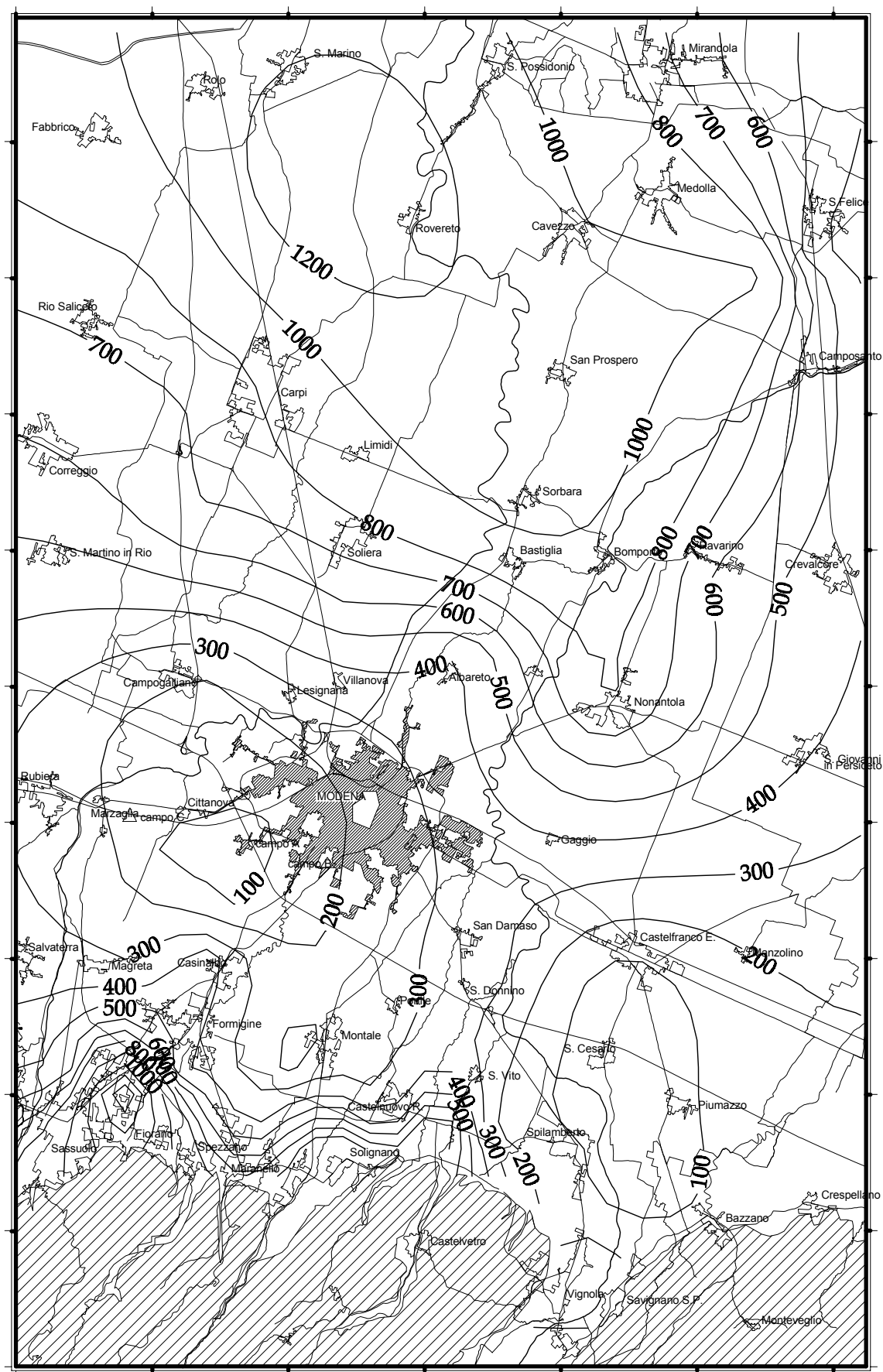


Figura 25 - Boro ($\mu\text{g/l}$) media anno 2002.

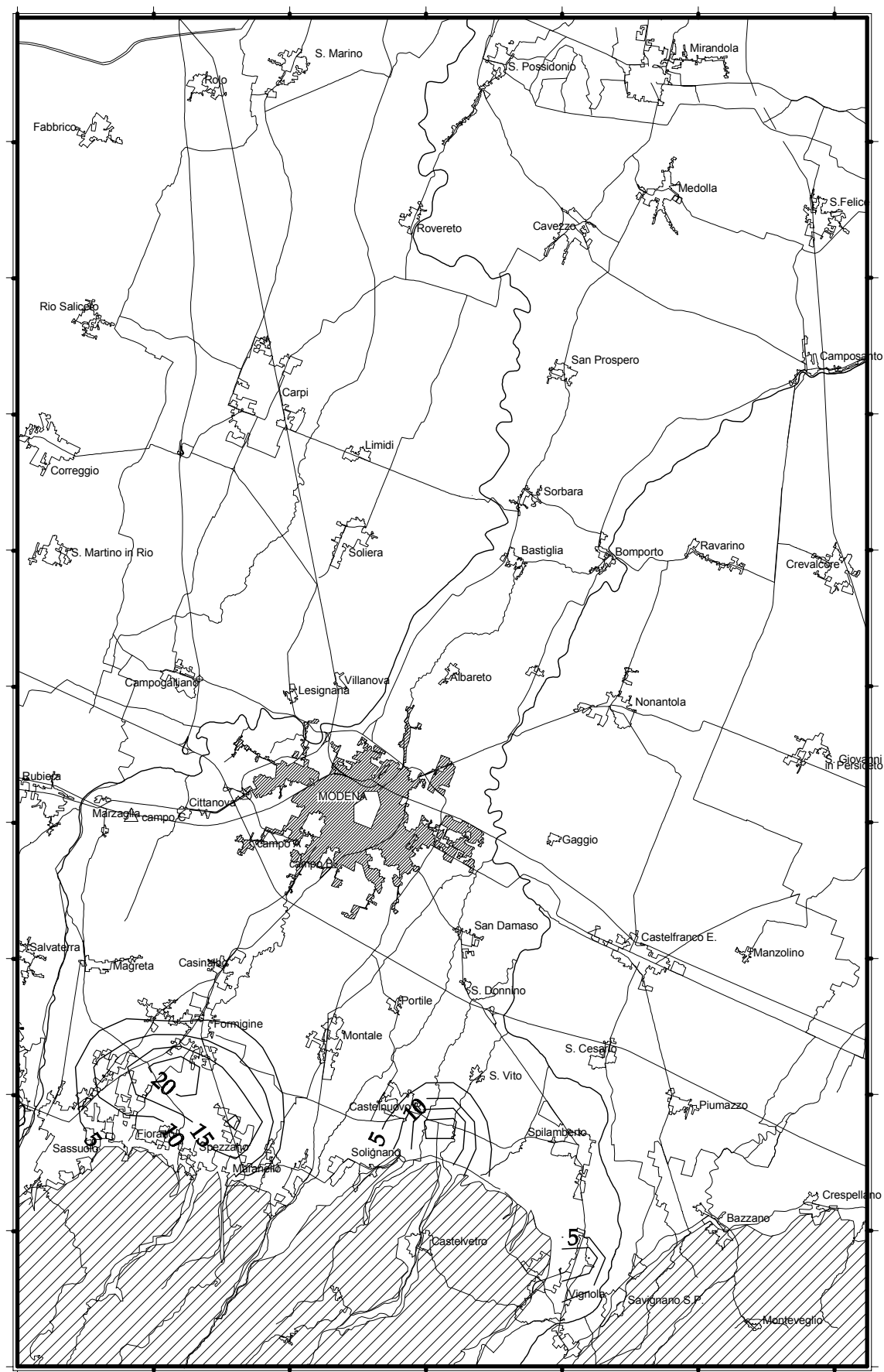


Figura 26 - Composti organo-alogenati totali ($\mu\text{g/l}$) media anno 2002.

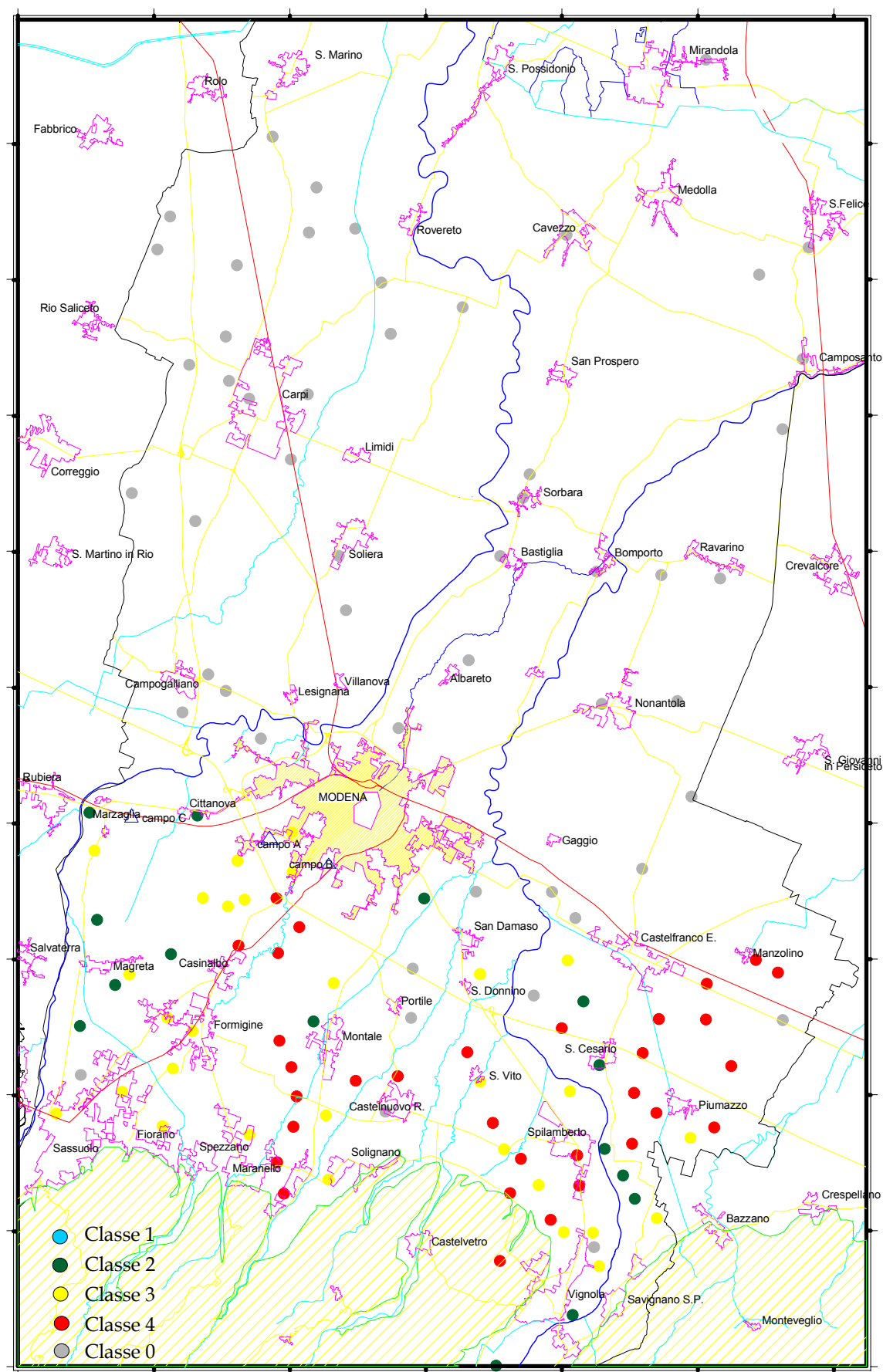


Figura 27 - Classificazione chimica anno 1994.

