

Allegato 4

Elaborazioni cartografiche dei dati anni 2007-2008

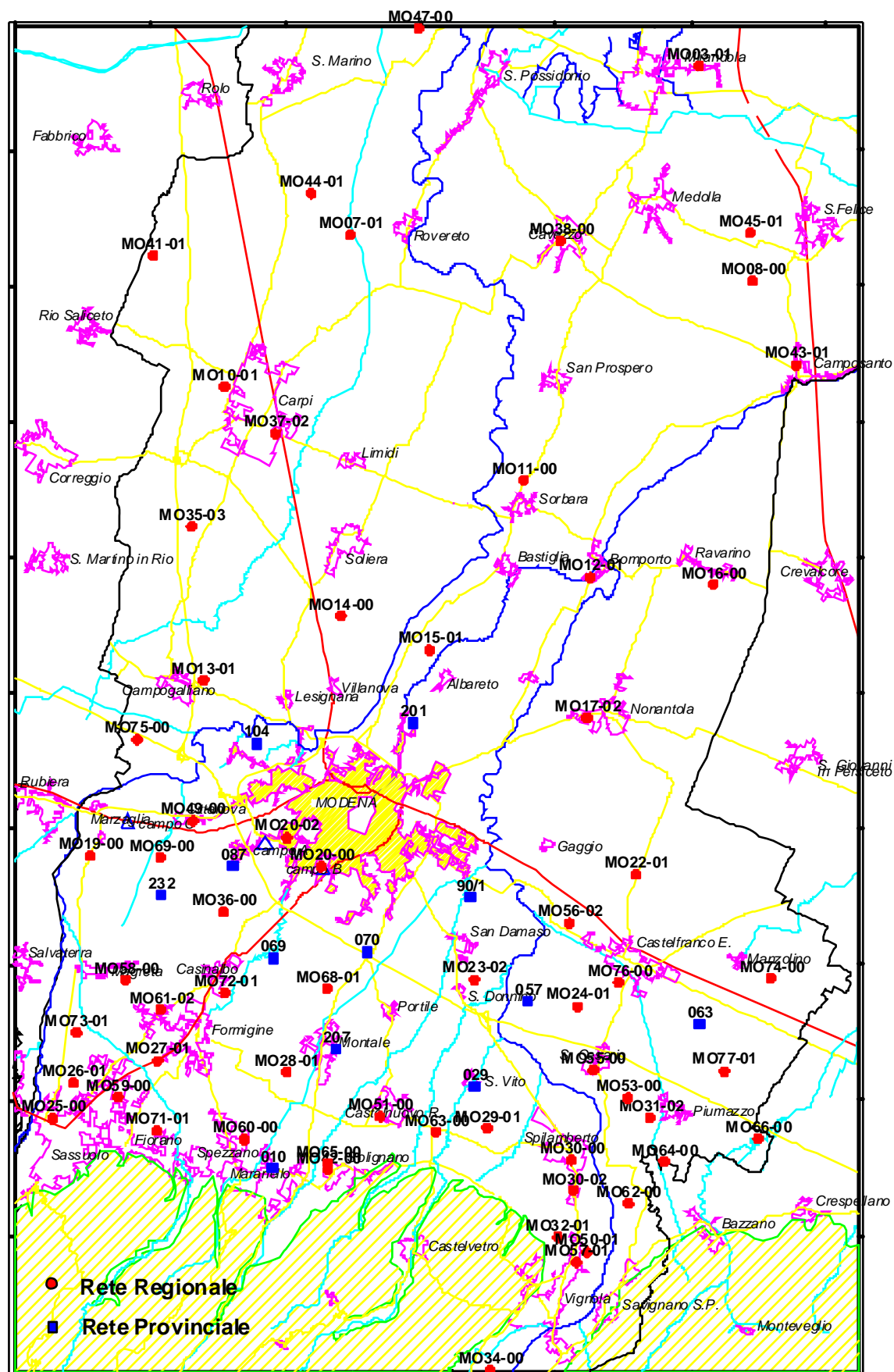


Figura 39 – Rete di monitoraggio.

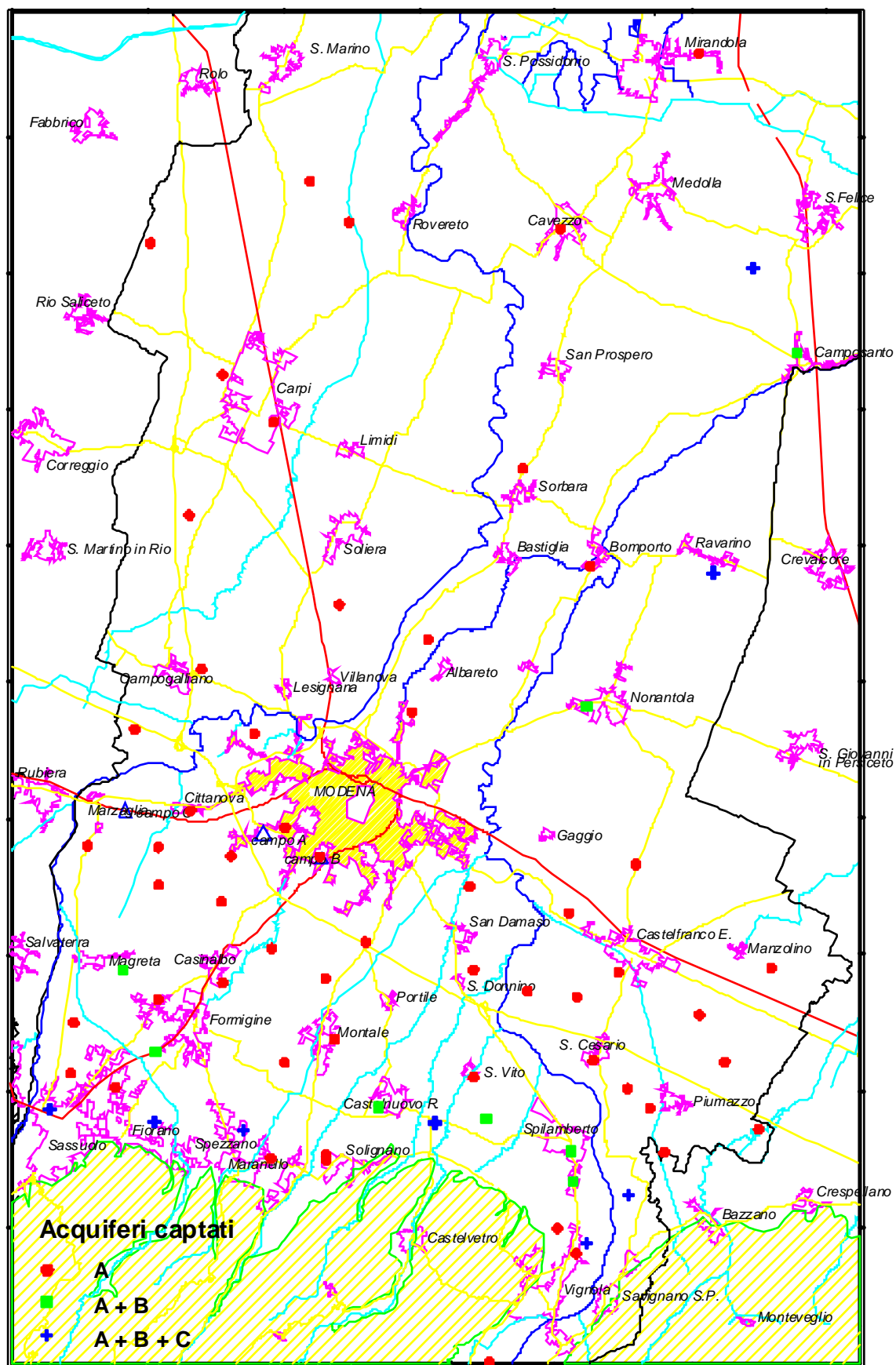


Figura 40 – Acquiferi captati.

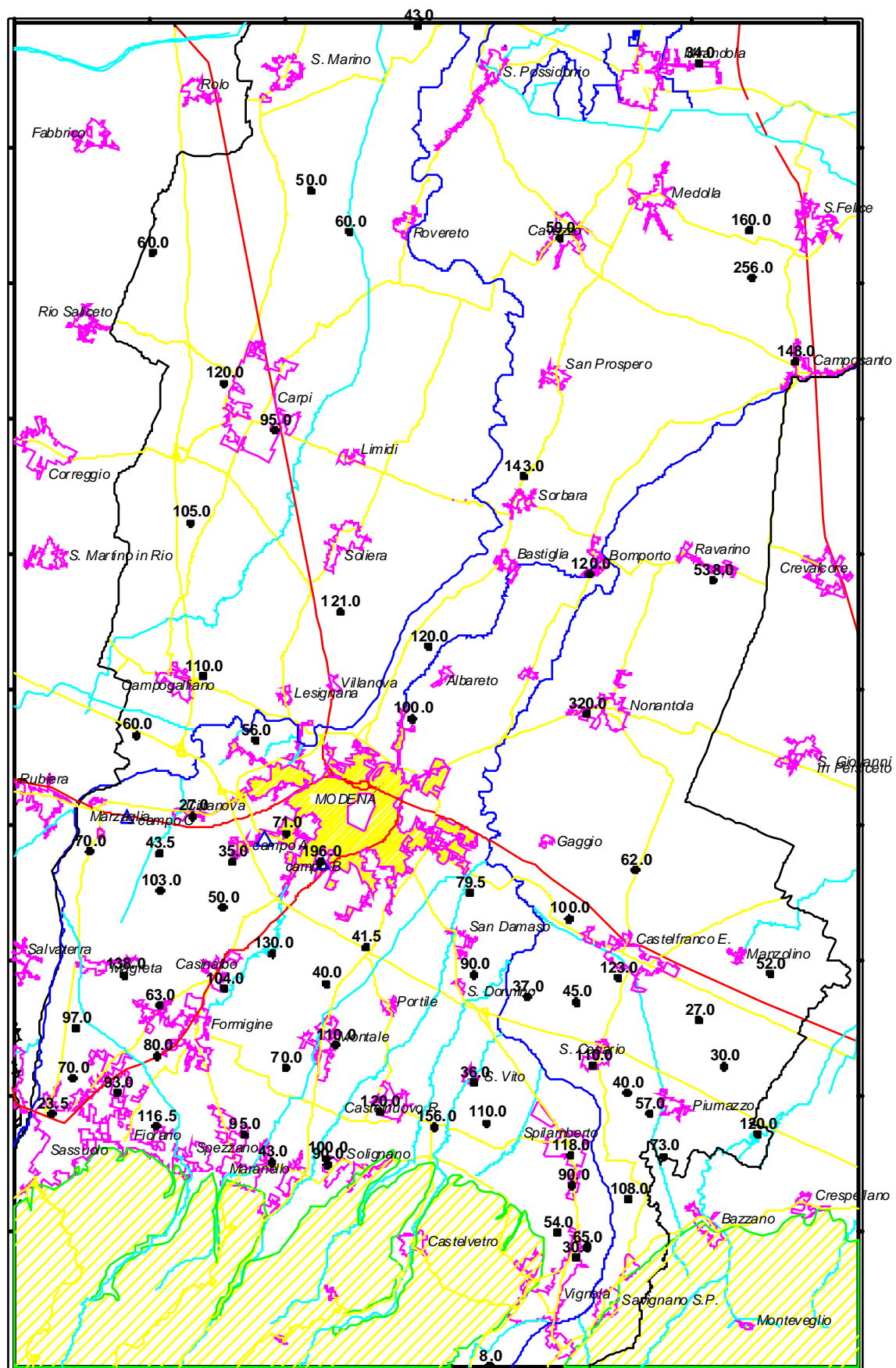
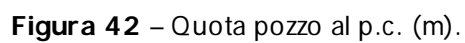


Figura 41 – Profondità (m).



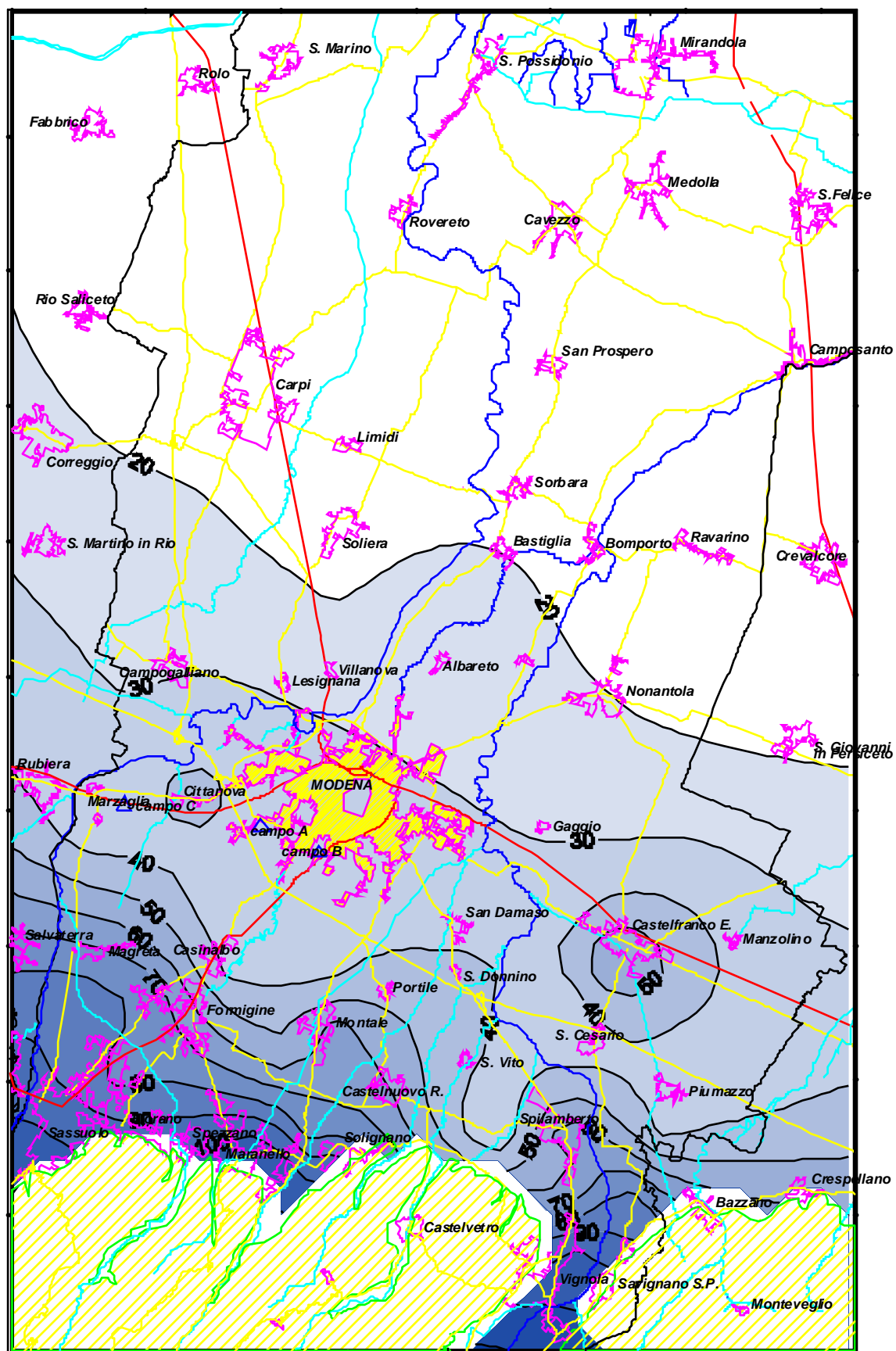


Figura 43 – Piezometria (m. s.l.m.) media anno 2007.

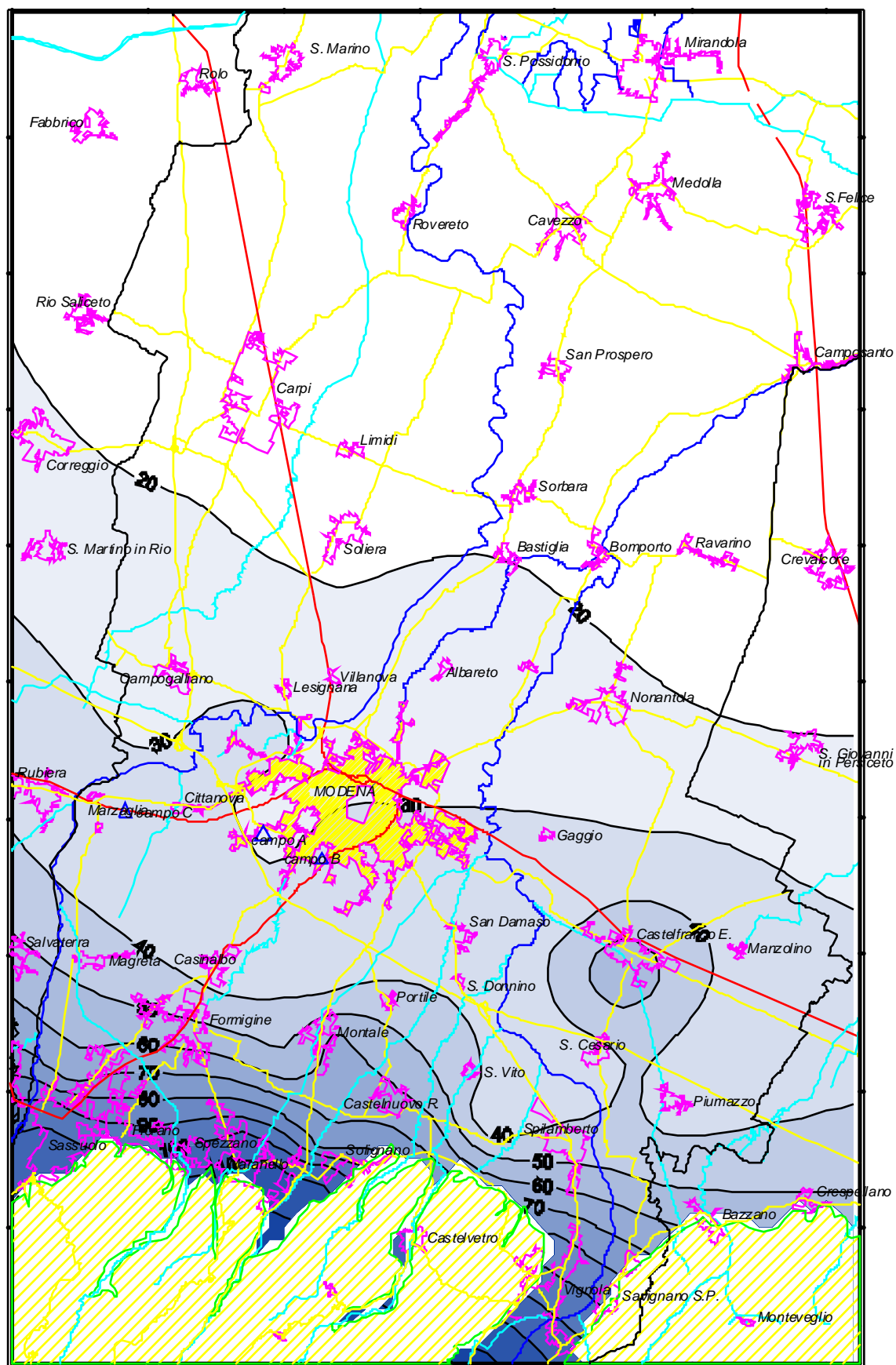
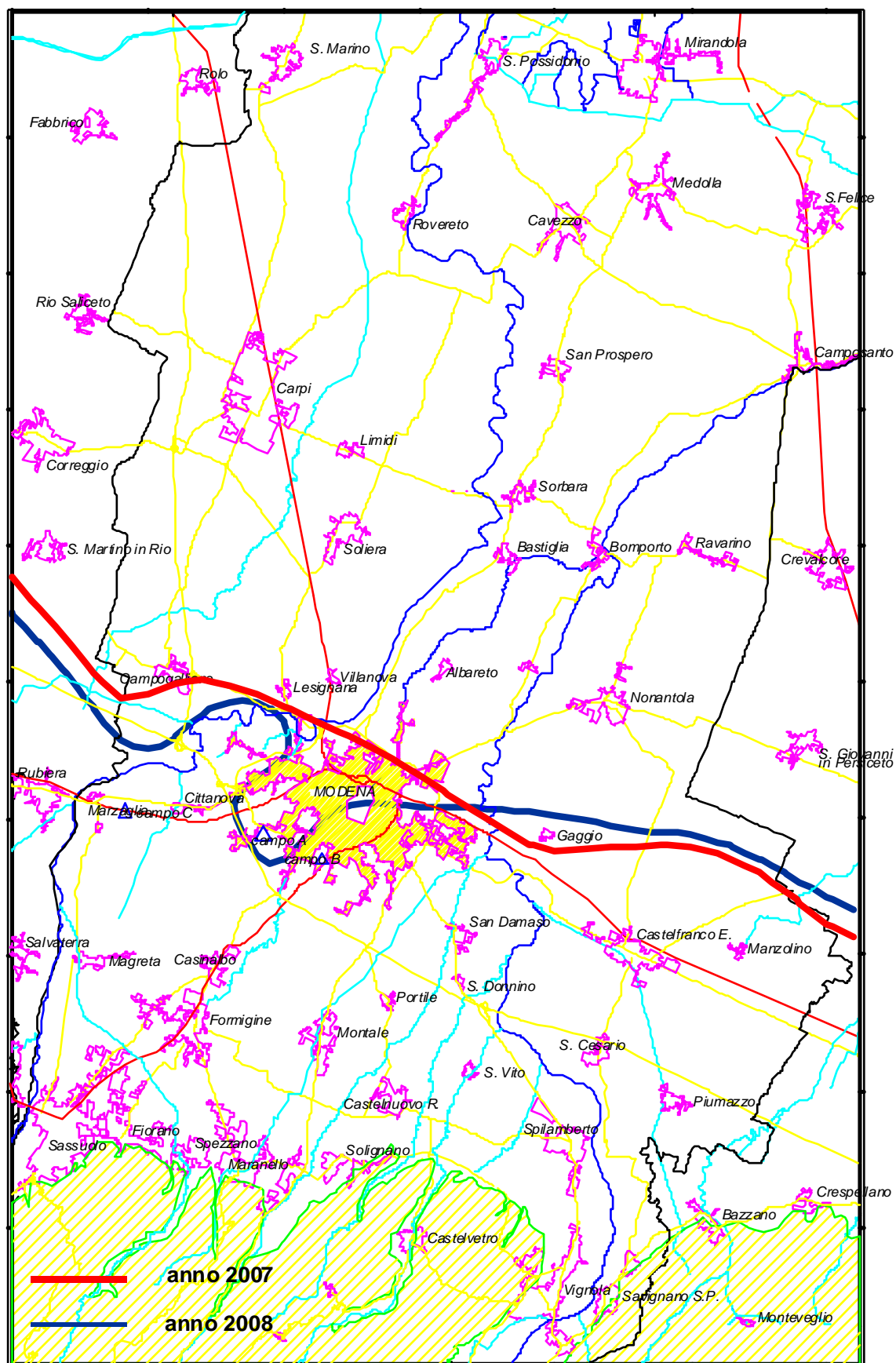


Figura 44 – Piezometria (m. s.l.m.) media anno 2008.



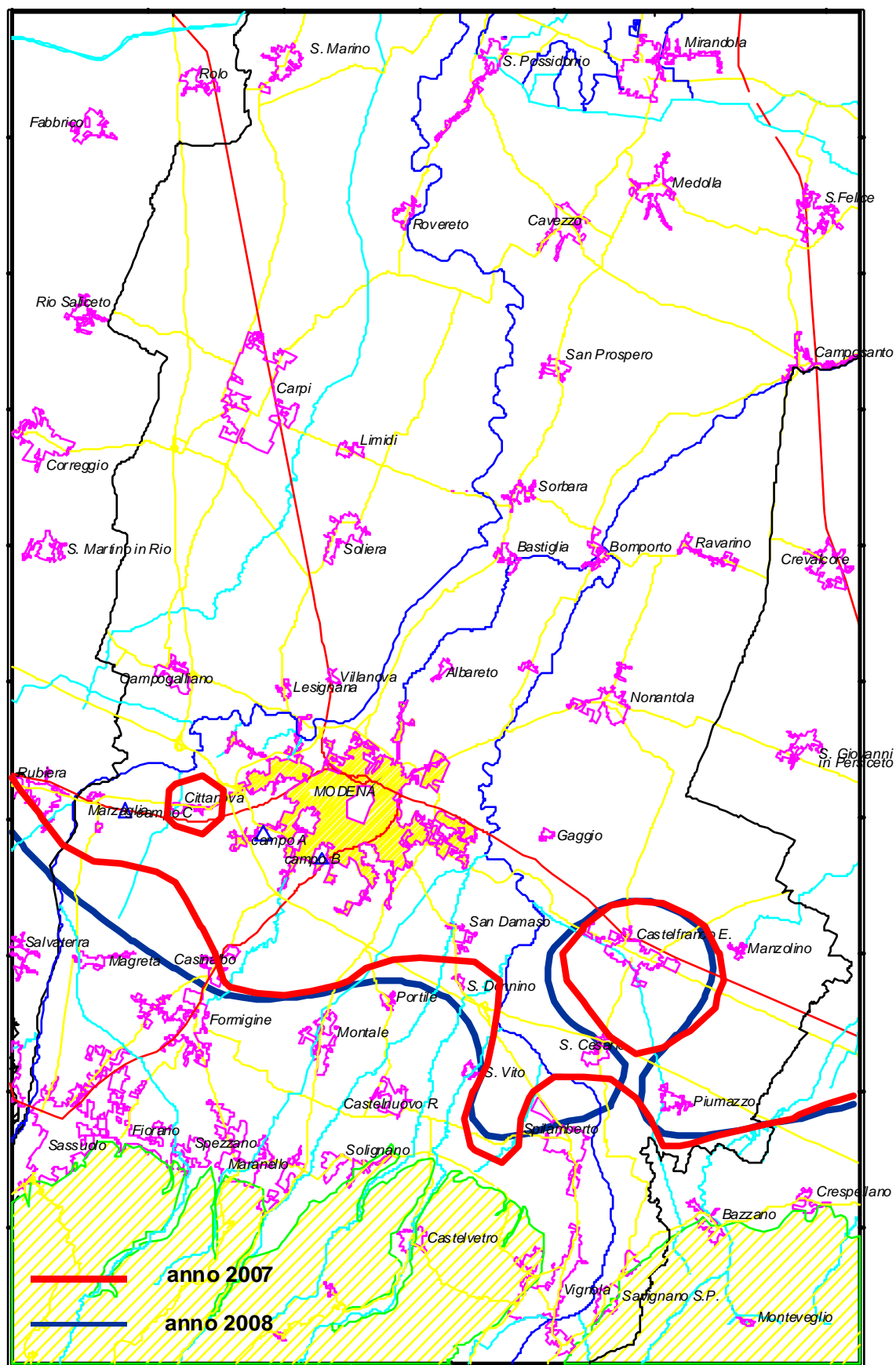


Figura 46 – Piezometria (m. s.l.m.) confronto medie anni 2007 e 2008 - isopieze dei 40 m.

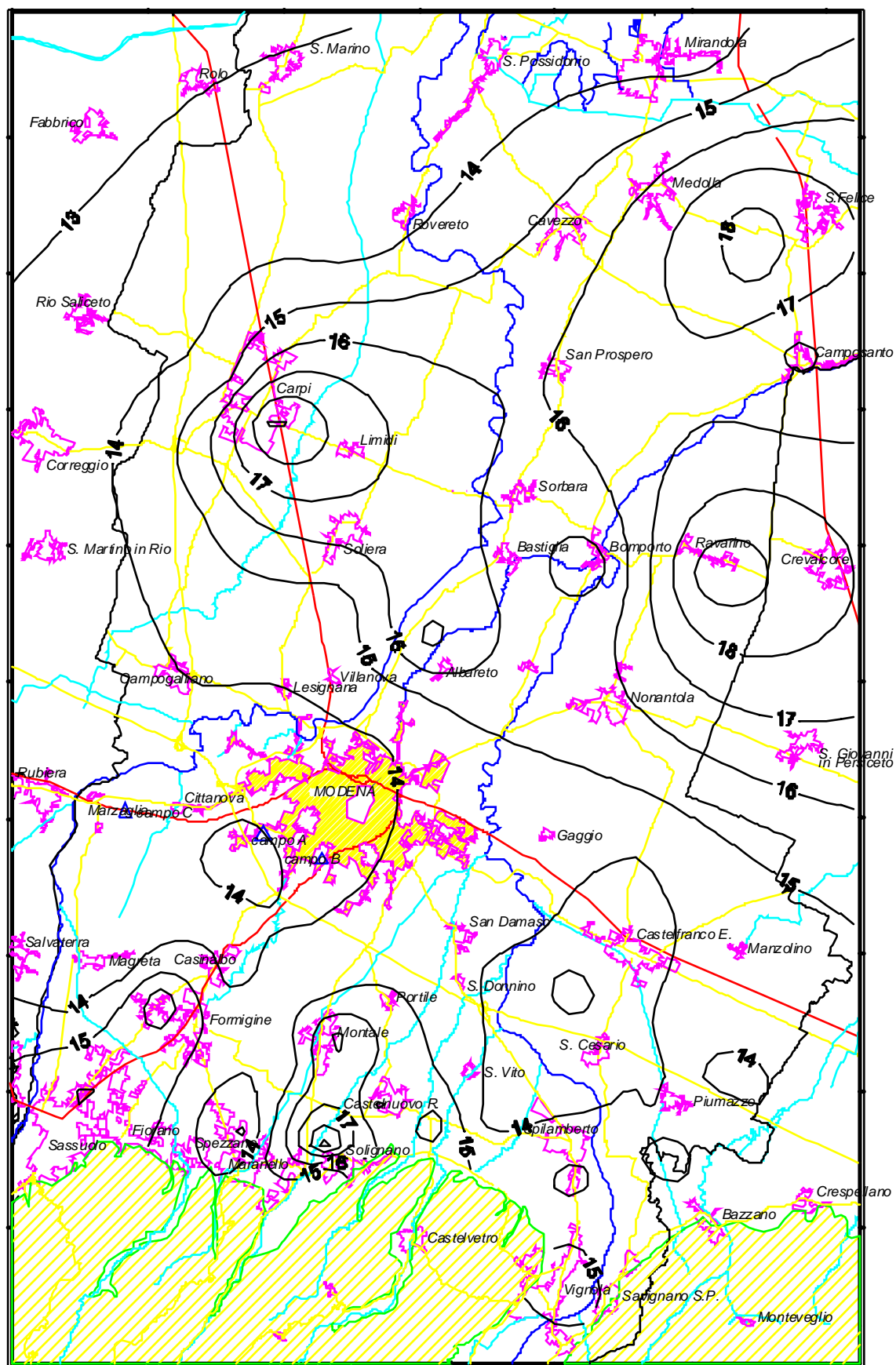


Figura 48 – Temperatura (°C) media anno 2008.

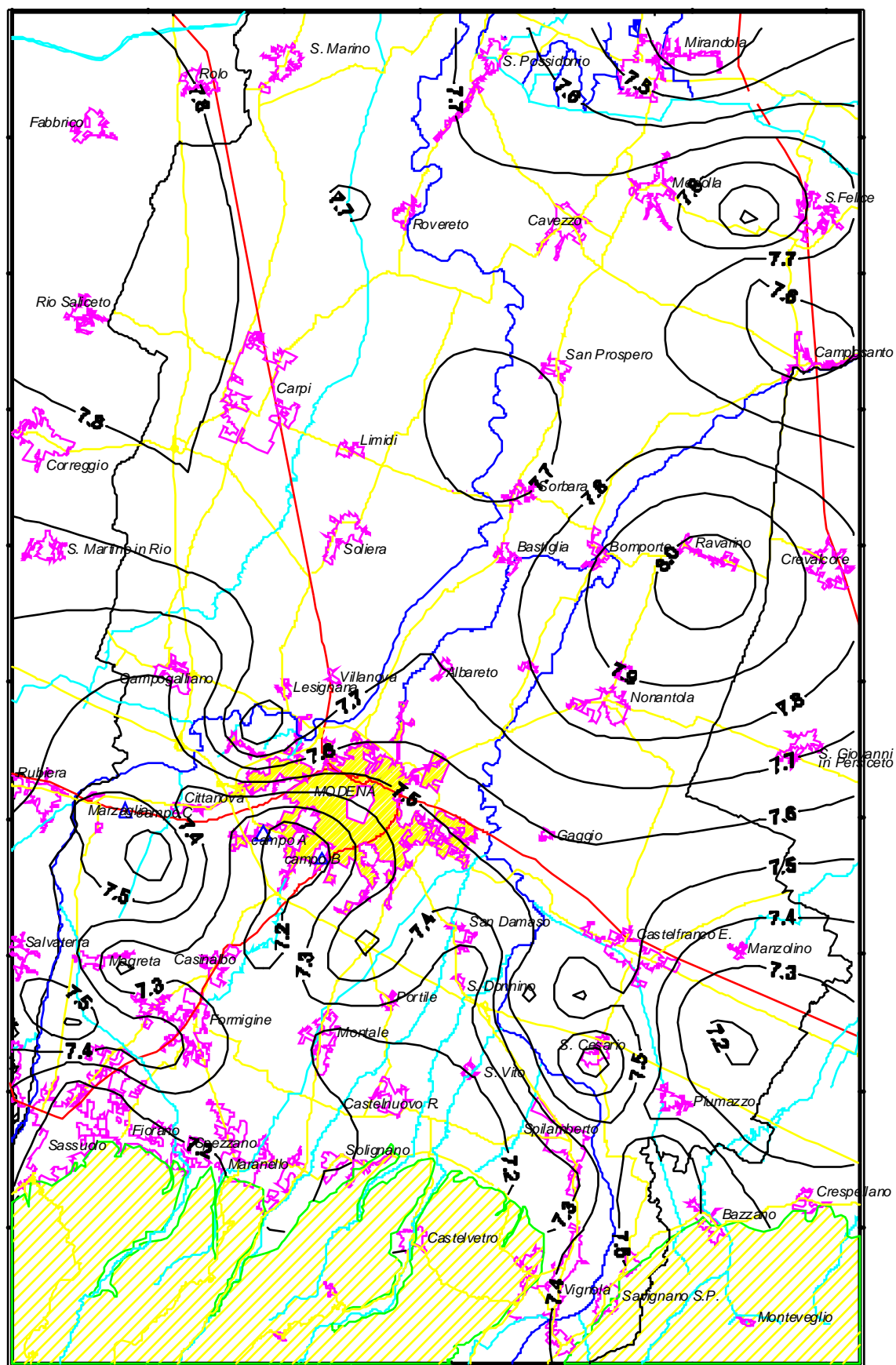


Figura 49 – pH media anno 2008.

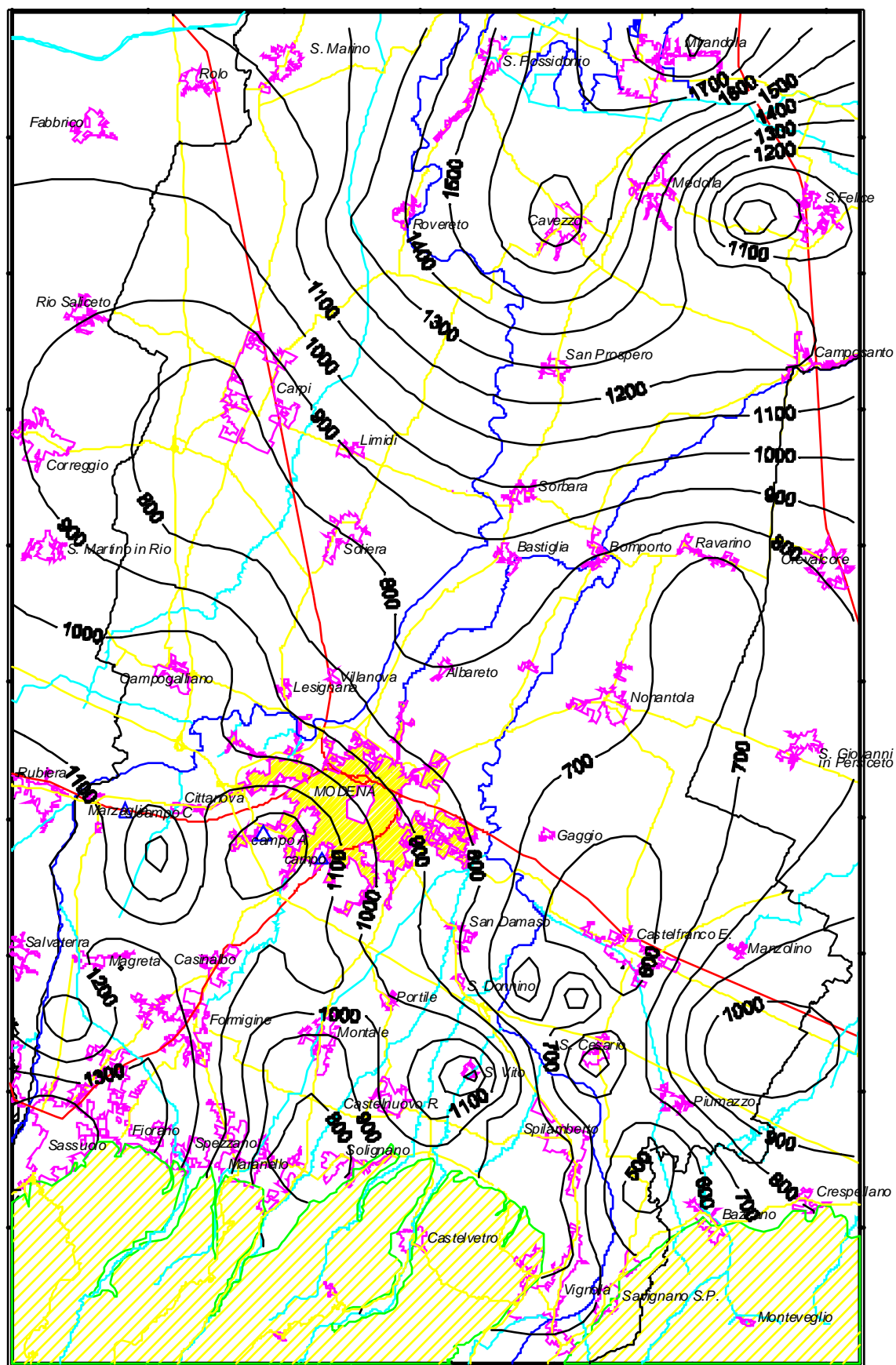


Figura 50 – Conducibilità (µS/cm) media anno 2008.

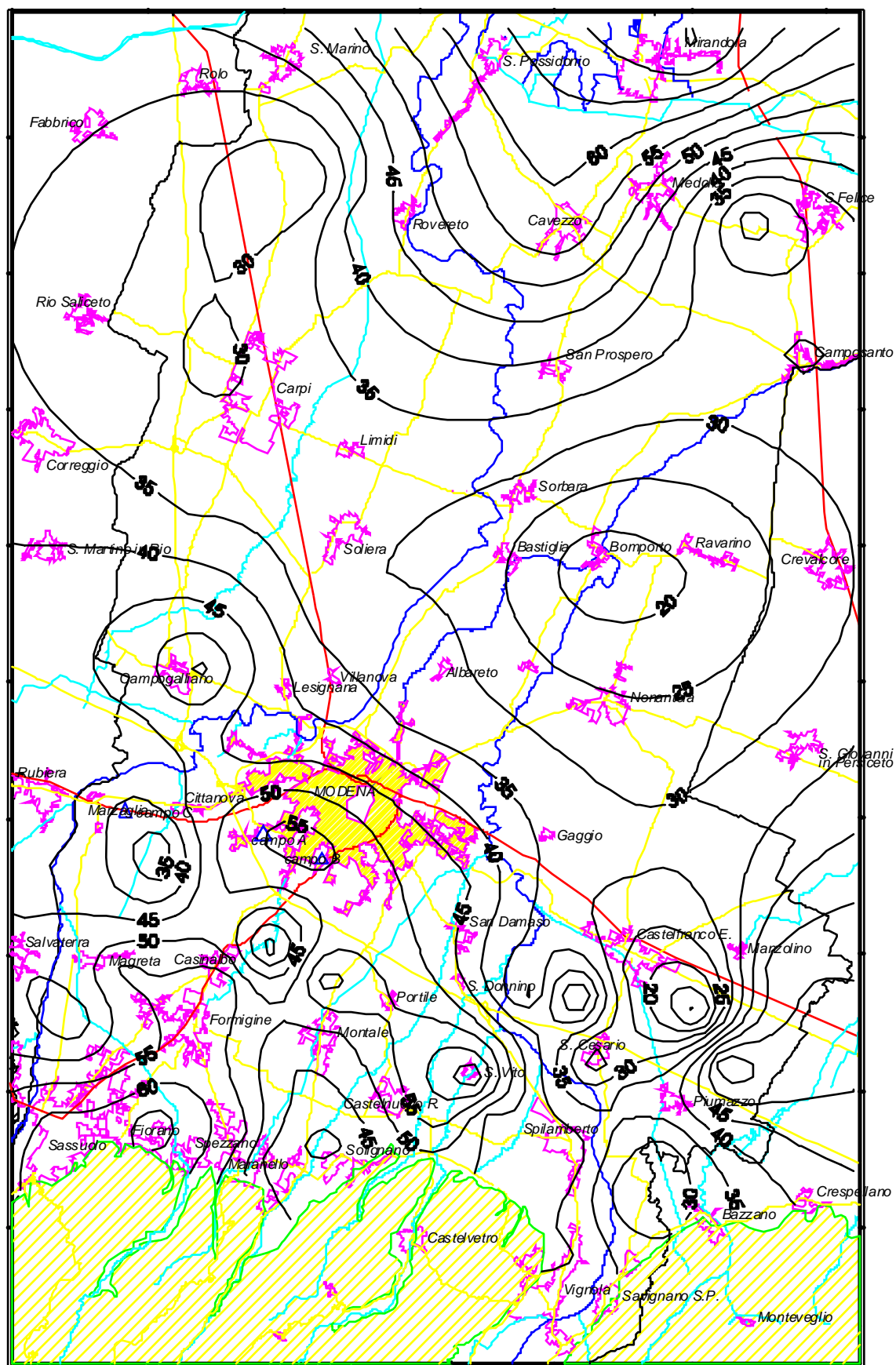


Figura 51 – Durezza (°F) media anno 2008.

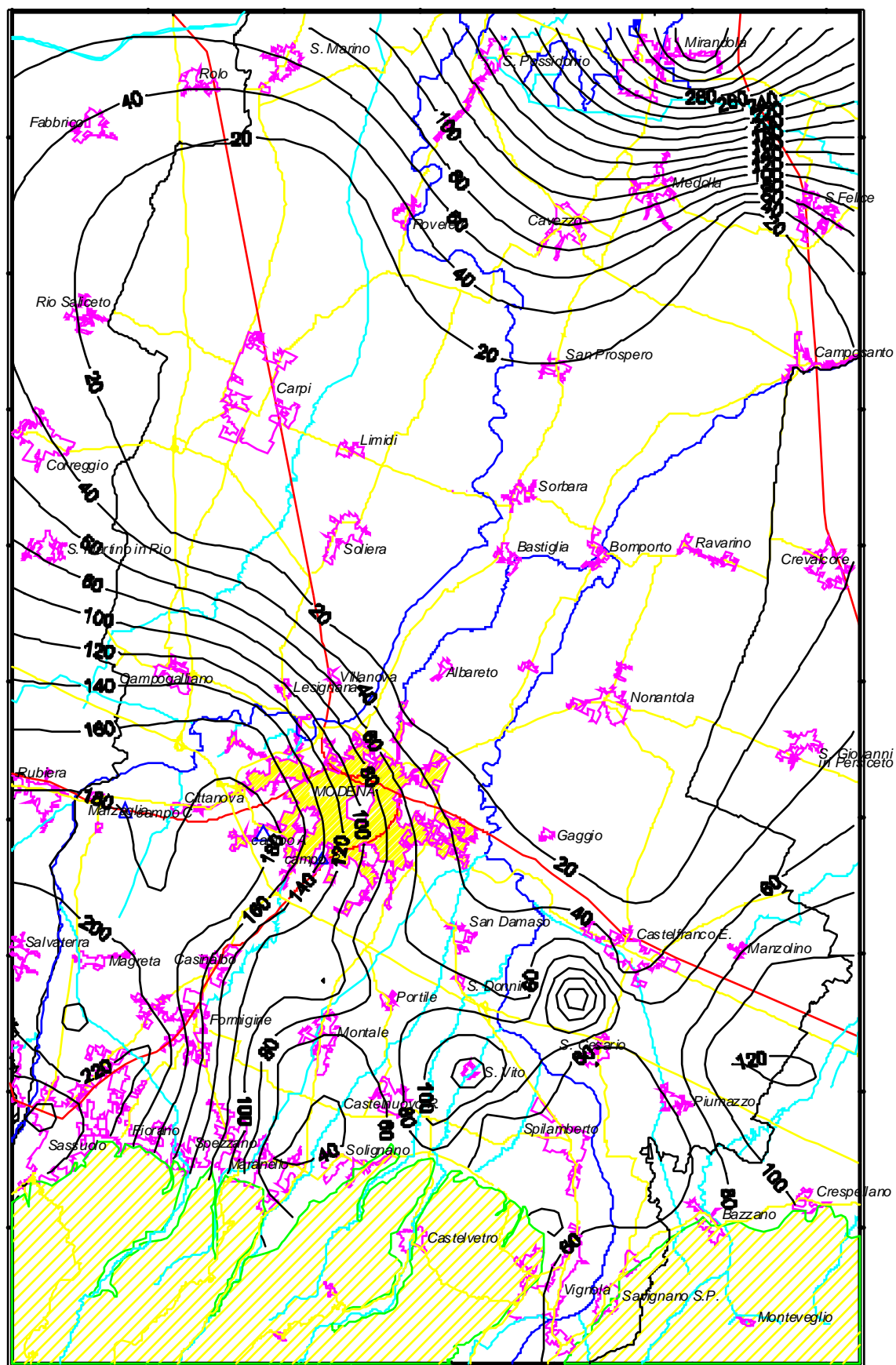


Figura 52 – Solfati (mg/l) media anno 2008.

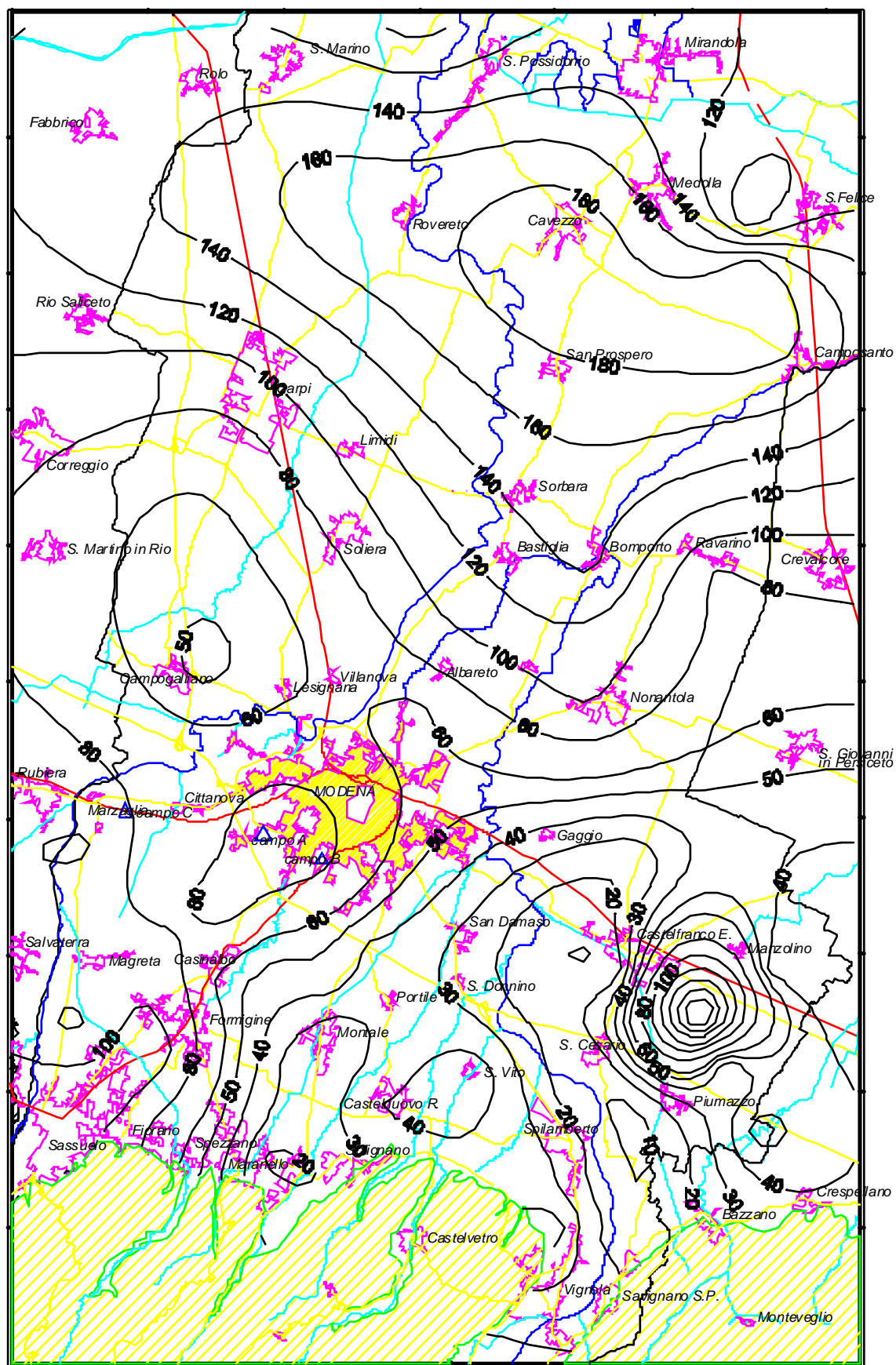


Figura 54 – Sodio (mg/l) media anno 2008.

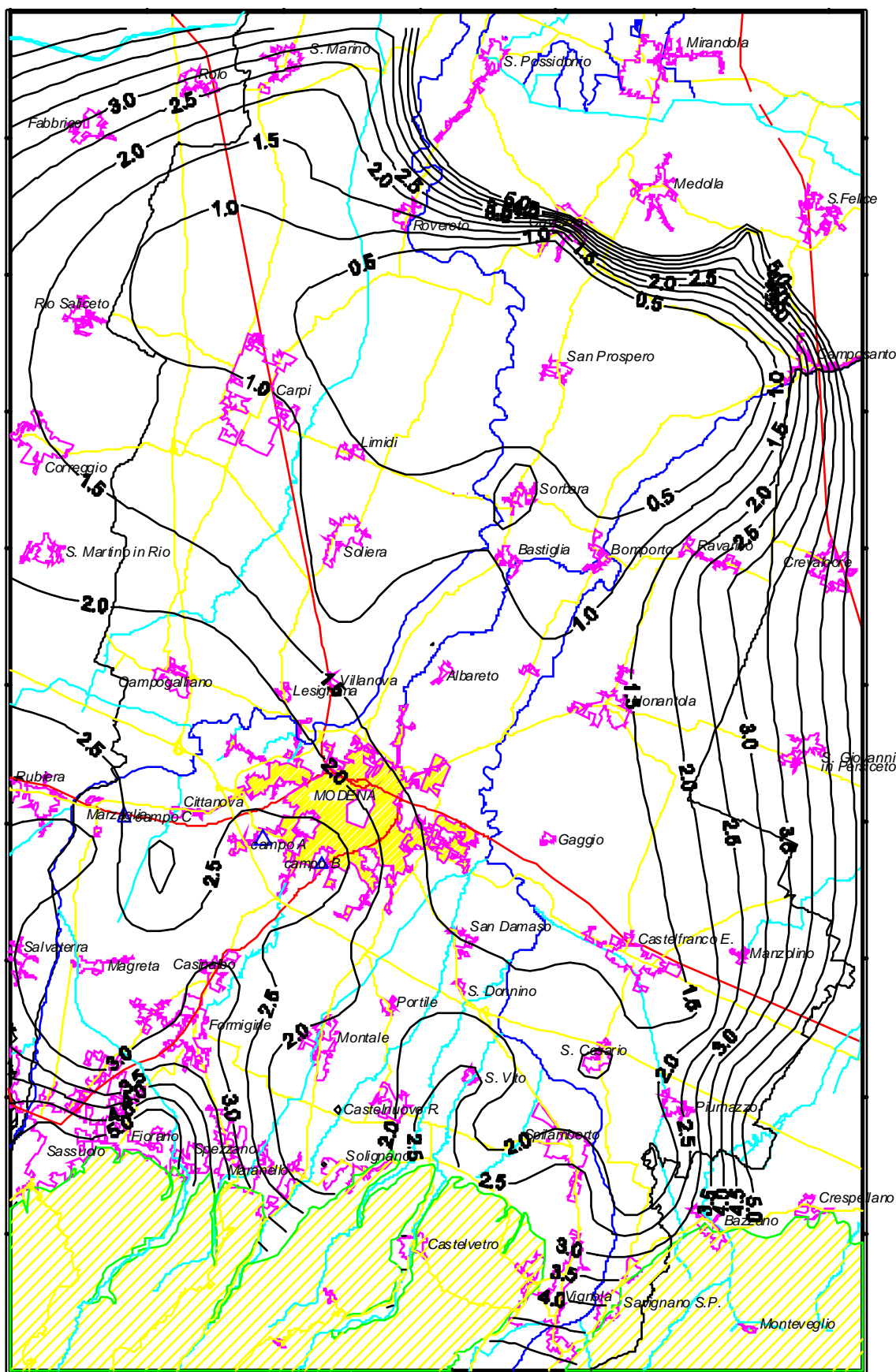


Figura 55 – Potassio (mg/l) media anno 2008.

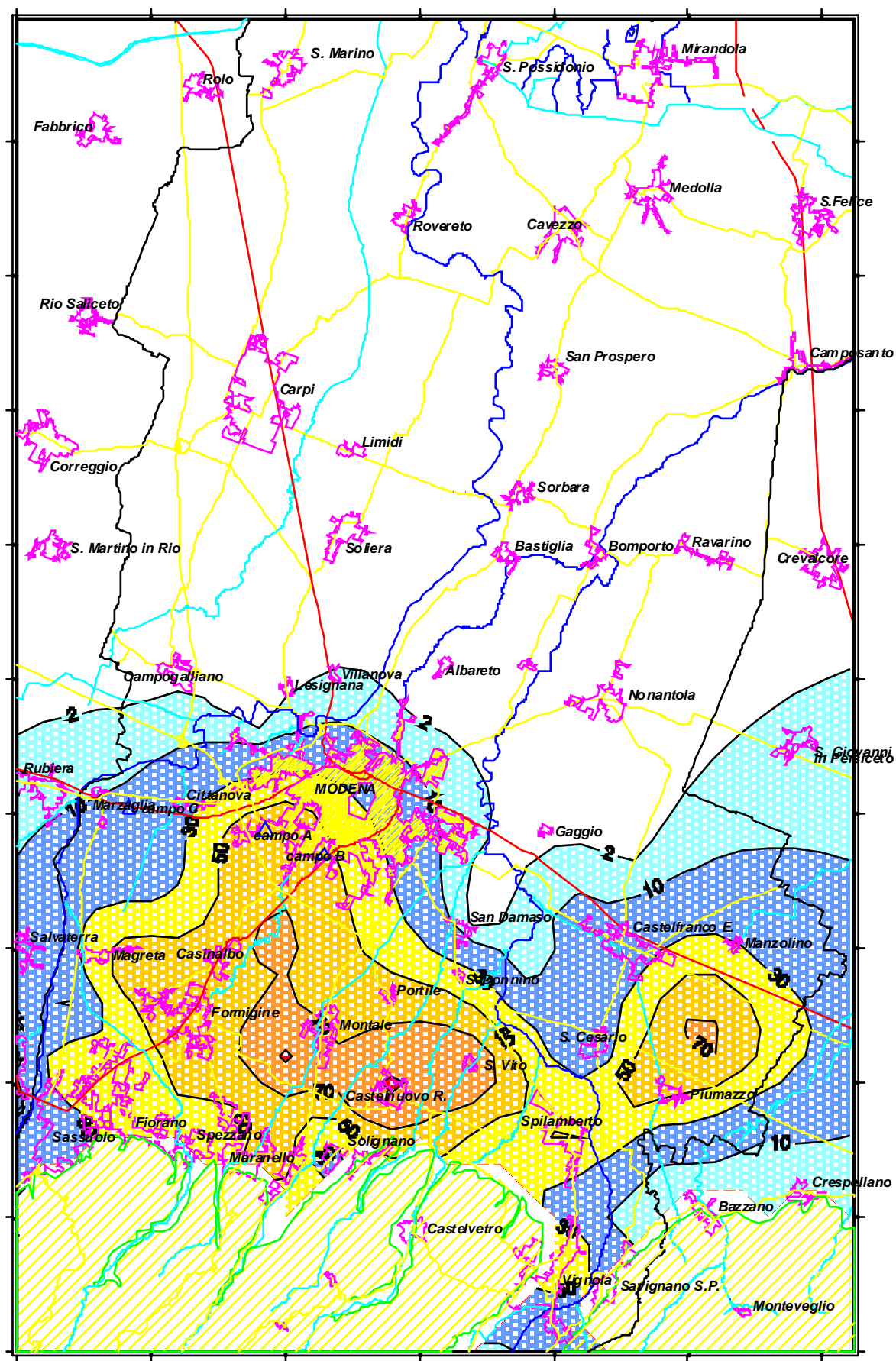


Figura 56 – Nitrati (mg/l) media anno 2007.

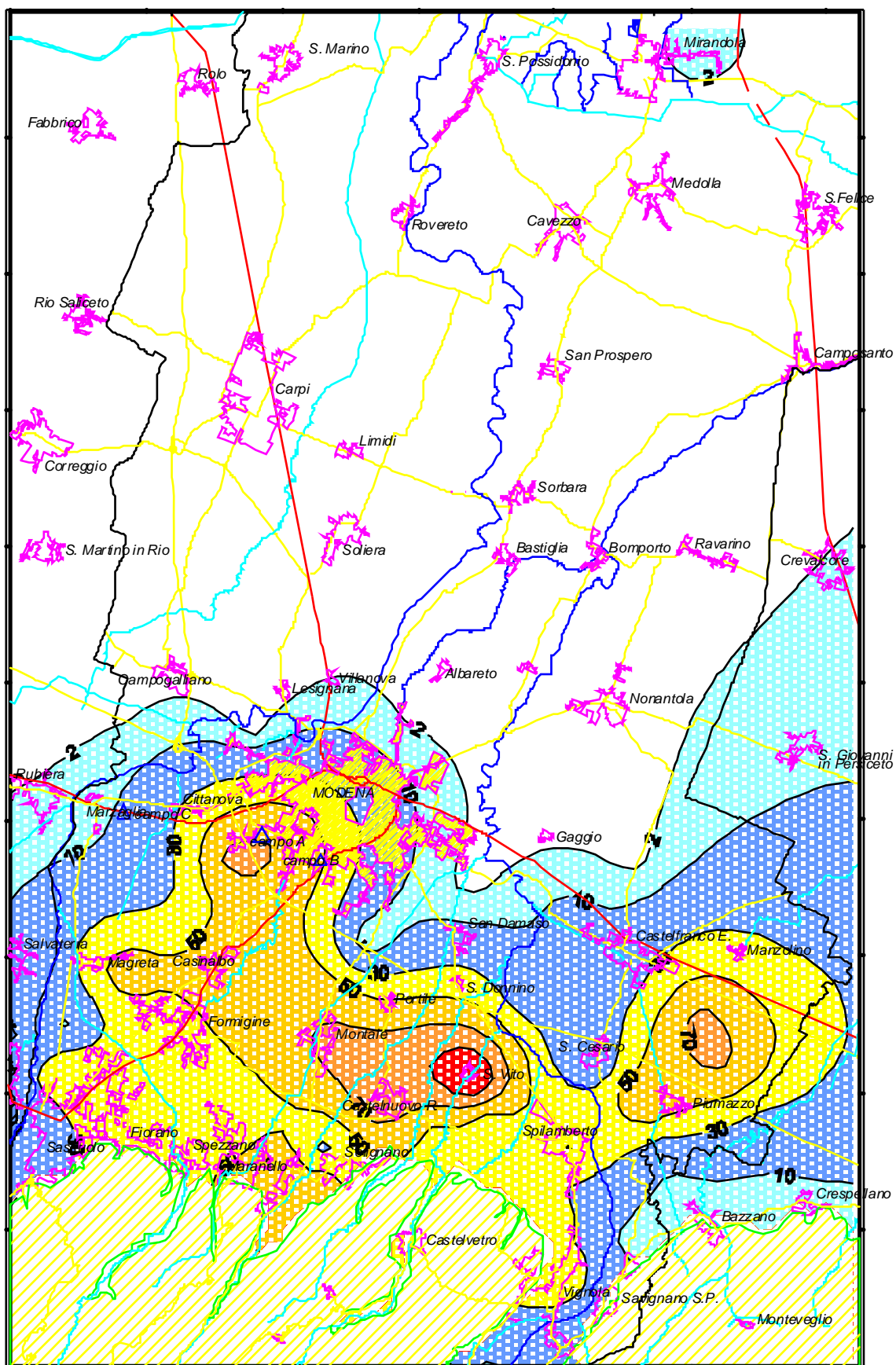
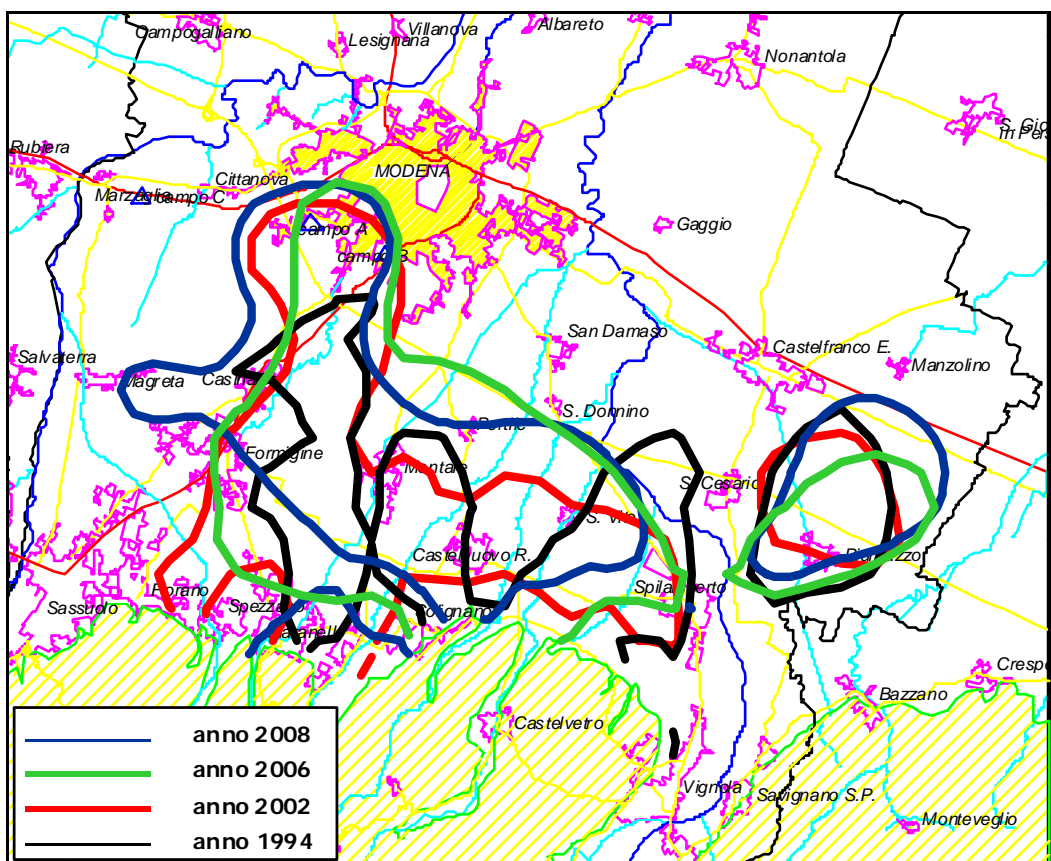
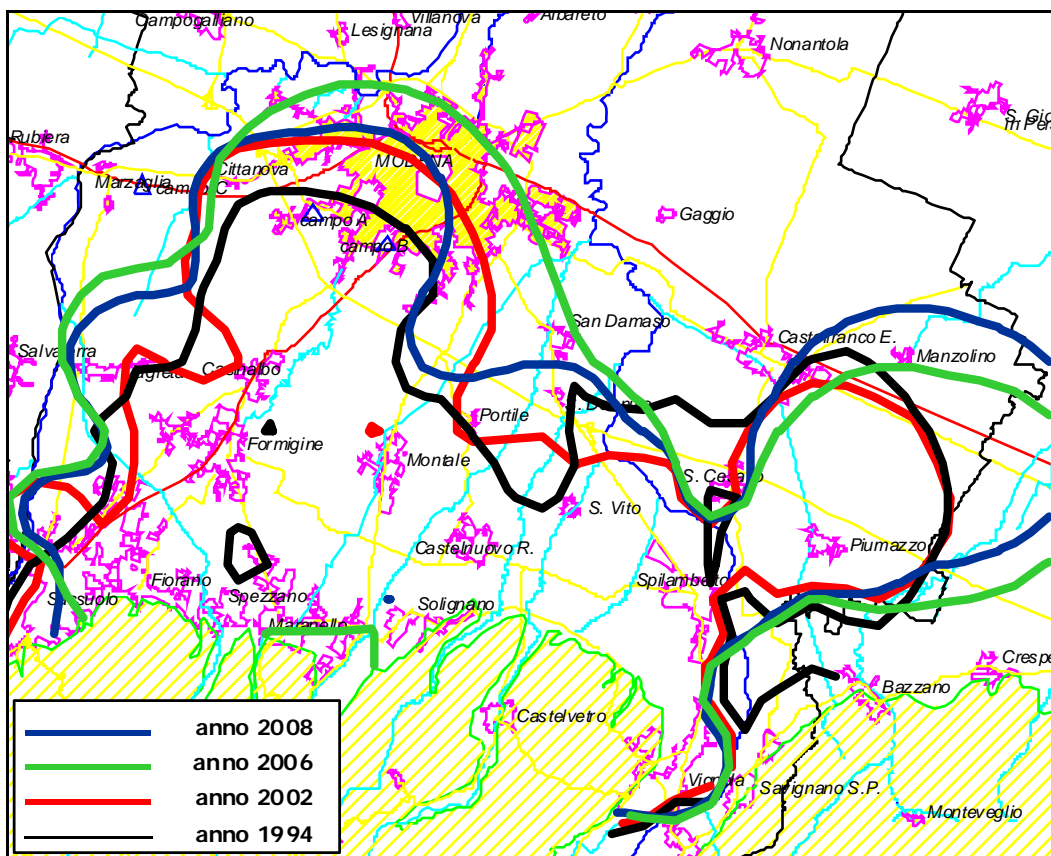


Figura 57 – Nitrati (mg/l) media anno 2008.



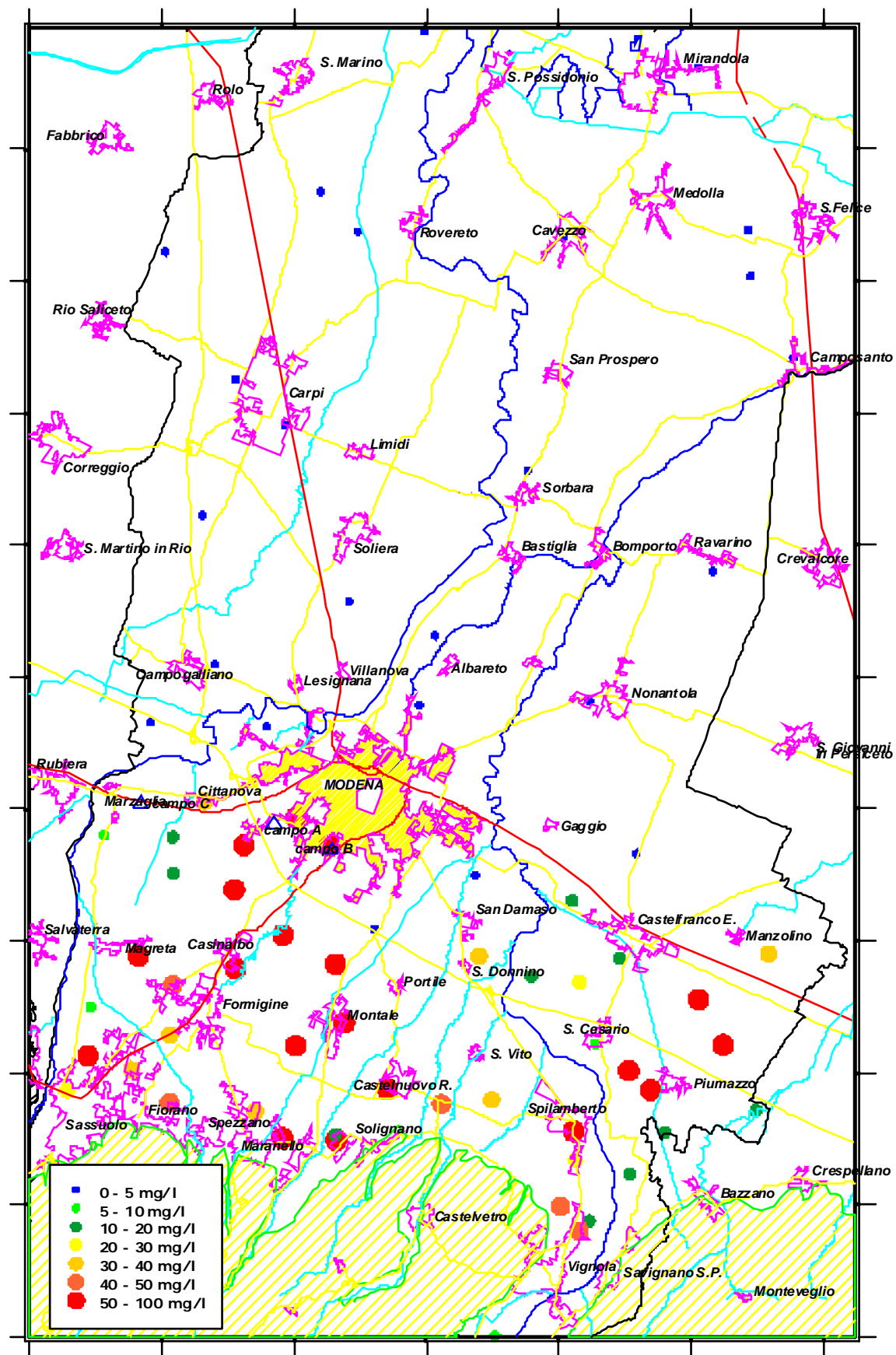


Figura 61 – Concentrazione dei nitrati per singolo pozzo media anno 2008.

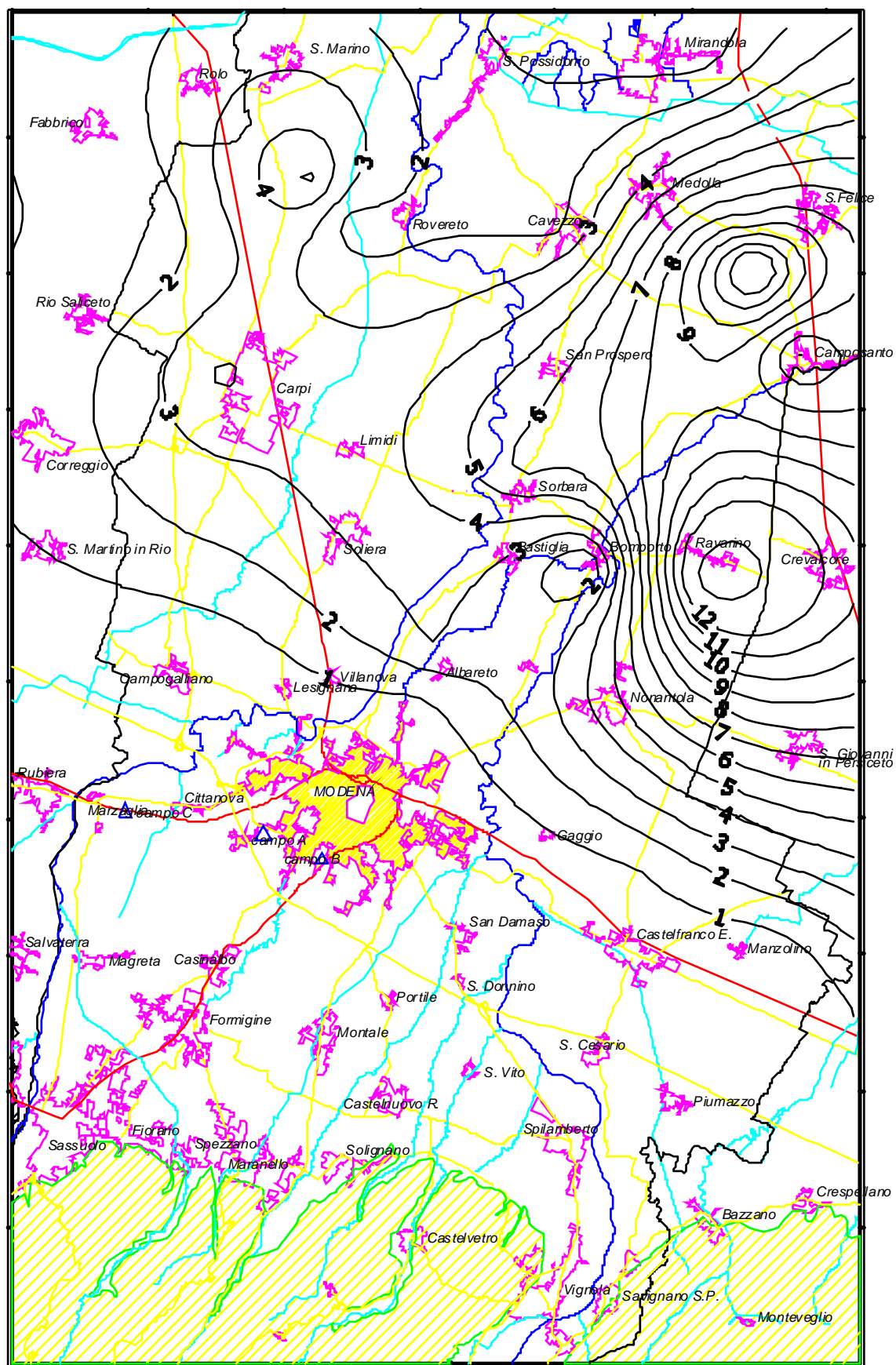


Figura 62 – Ammoniaca (mg/l) media anno 2008.

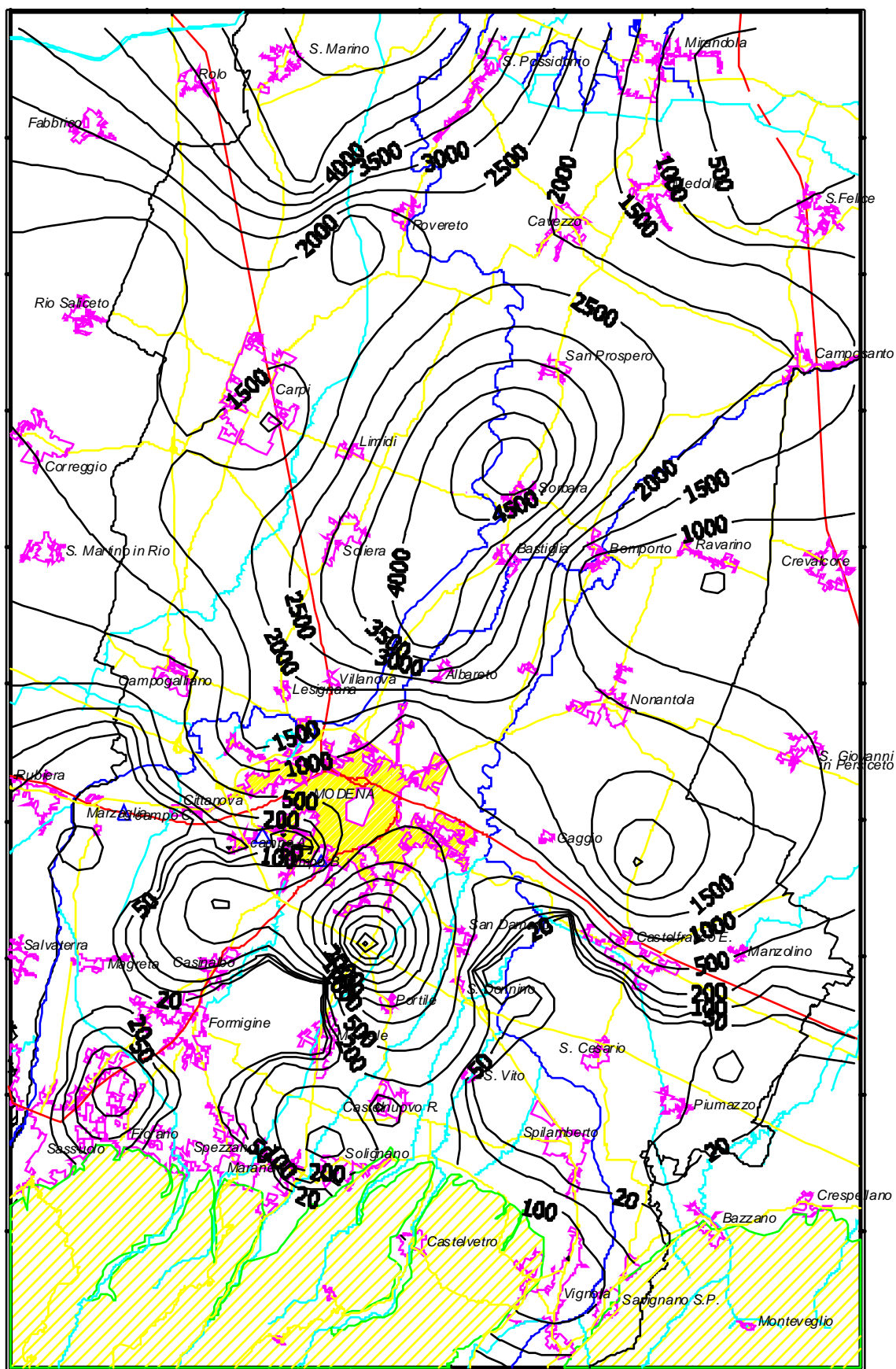


Figura 63 – Ferro ($\mu\text{g/l}$) media anno 2008.

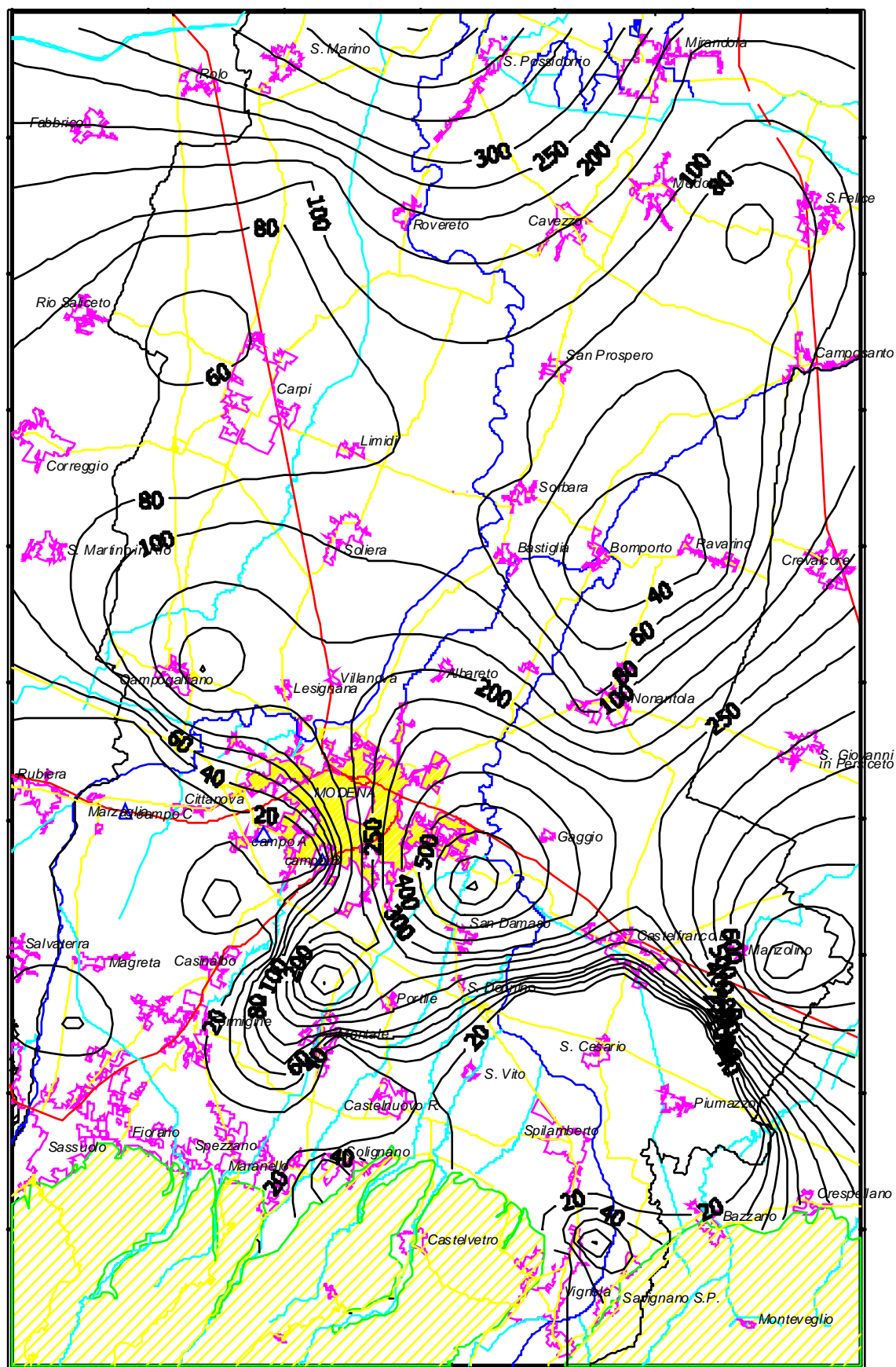
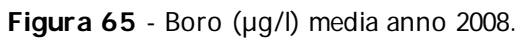


Figura 64 – Manganese ($\mu\text{g/l}$) media anno 2008.



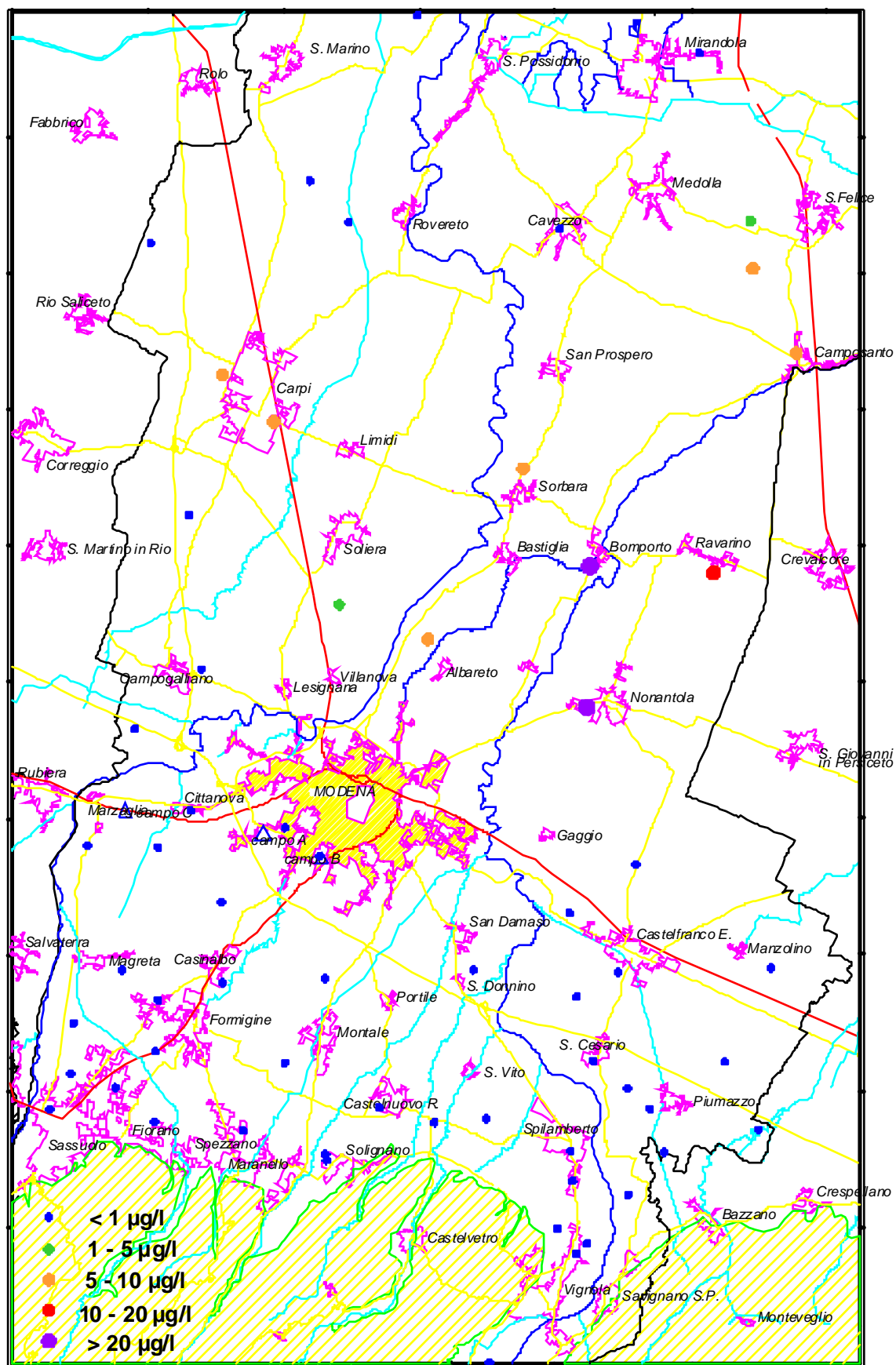


Figura 66 – Concentrazione di Arsenico ($\mu\text{g/l}$) per singolo pozzo media anno 2008.

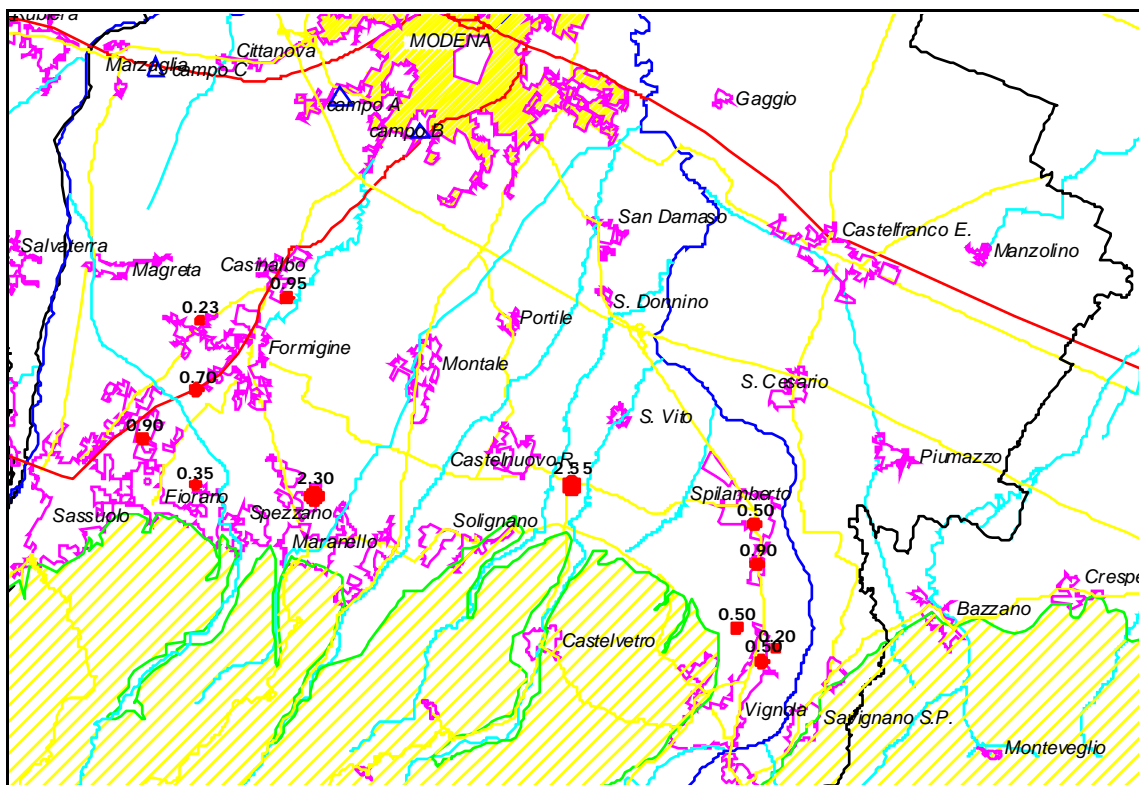


Figura 68 – Tricloroetilene media anno 2008.

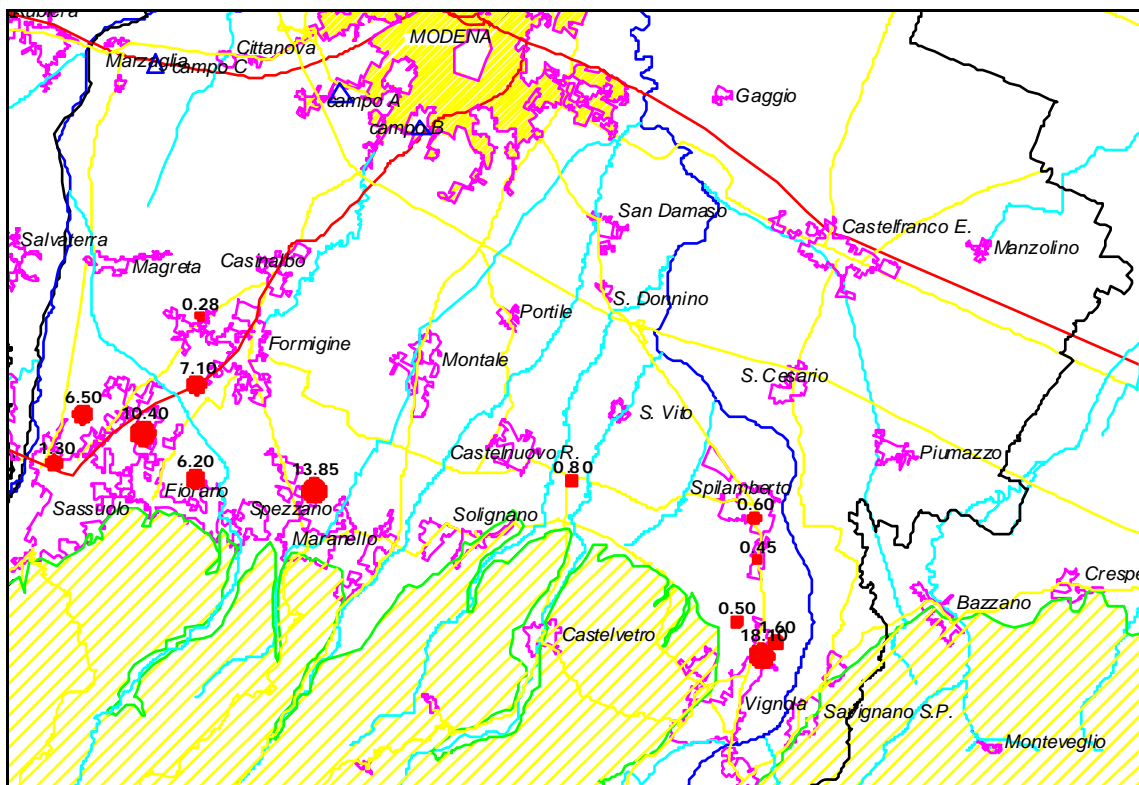


Figura 69 – Tetracloroetilene media anno 2008.