

Proiezioni climatiche



Parma

arpae
agenzia
protezione
ambiente energia
emilia-romagna

osservatorio clima
emilia-romagna



Periodo di riferimento:
1961-1990



Periodo di proiezione:
2021-2050

Scenario emissivo:
RCP 4.5

Fonte dati:

Dataset Eraclito v. 4.2

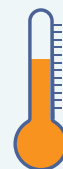
Metodo di elaborazione:
Regionalizzazione
statistica applicata a
modelli climatici globali

13,2 °C

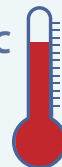


Temperatura media annua

14,7 °C

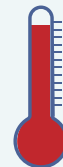


29,2 °C



Temperatura massima estiva

31,5 °C



-0,3 °C



Temperatura minima invernale

1,4 °C

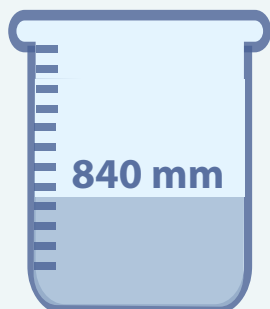


1961-1990

2021-2050



Precipitazione annua



840 mm



760 mm

1961-1990

2021-2050



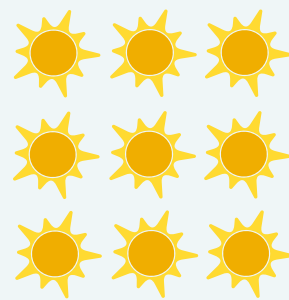
Durata massima delle onde di calore estive



3

giorni consecutivi

1961-1990



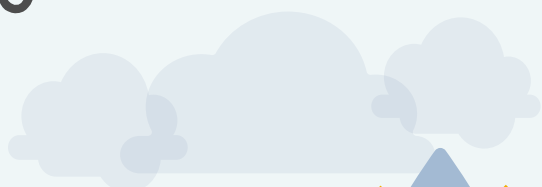
9

giorni consecutivi

2021-2050



Periodo massimo senza precipitazioni in estate



22

giorni consecutivi

1961-1990



31

giorni consecutivi

2021-2050



Notti tropicali estive



12

notti estive

1961-1990

31

notti estive

2021-2050