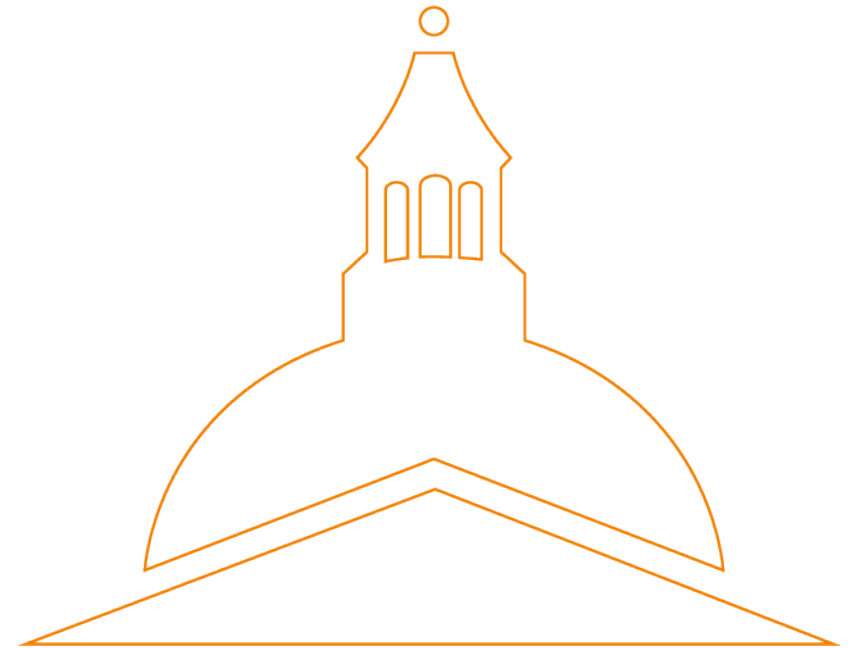


Urban and Territorial Transitions



Pr Carlos Moreno – Scientific Director

15 minutes: reinvigorating cities worldwide

It's Time for a '15-Minute City'



@Temku
Chrono Urbanism
Төлөвлөлт газар газар
олох гээд байна даа. Пар
ын даргыг
өвлөг

Le città del quarto d'ora

Clara Granata* | 05 maggio 2020

"la ciutat dels 15 minuts dóna resposta a les plataformes que destrueixen valor urbà"

Pařížský magistr
město", dí
šem

Paris Mayor's Plans For 15-Minute City
Forbes
secondo luogo,

DIE 15 MINUTEN-STADT

FUTURO DESPUÉS
CORONAVIRUS

カルロス・モ
テッド・シテイ
都市は...
À l'origine

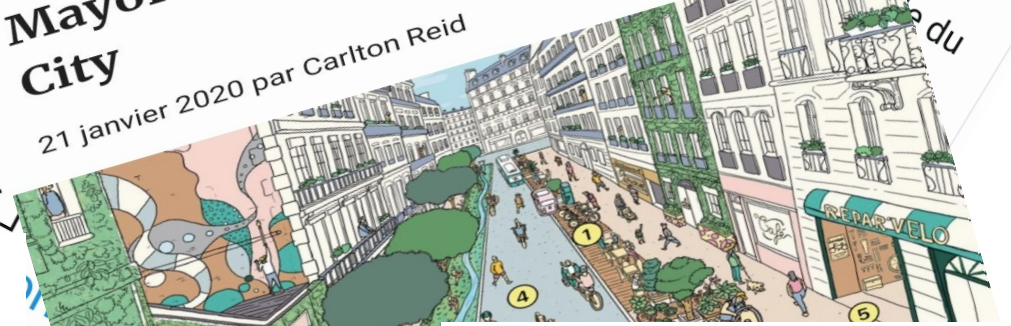
Paris'in "15 Dakikalık Şehir" Olma Hayali



The Benefits of a 15-Minute Neighborhood

VIDA / Urbanismo

Hacia 'ciudades de 15 minutos'

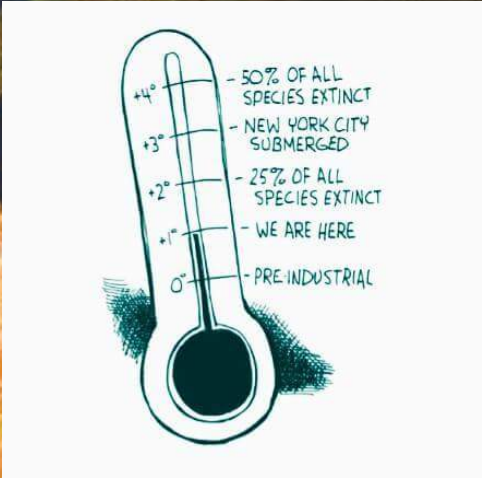


21 janvier 2020 par Carlton Reid

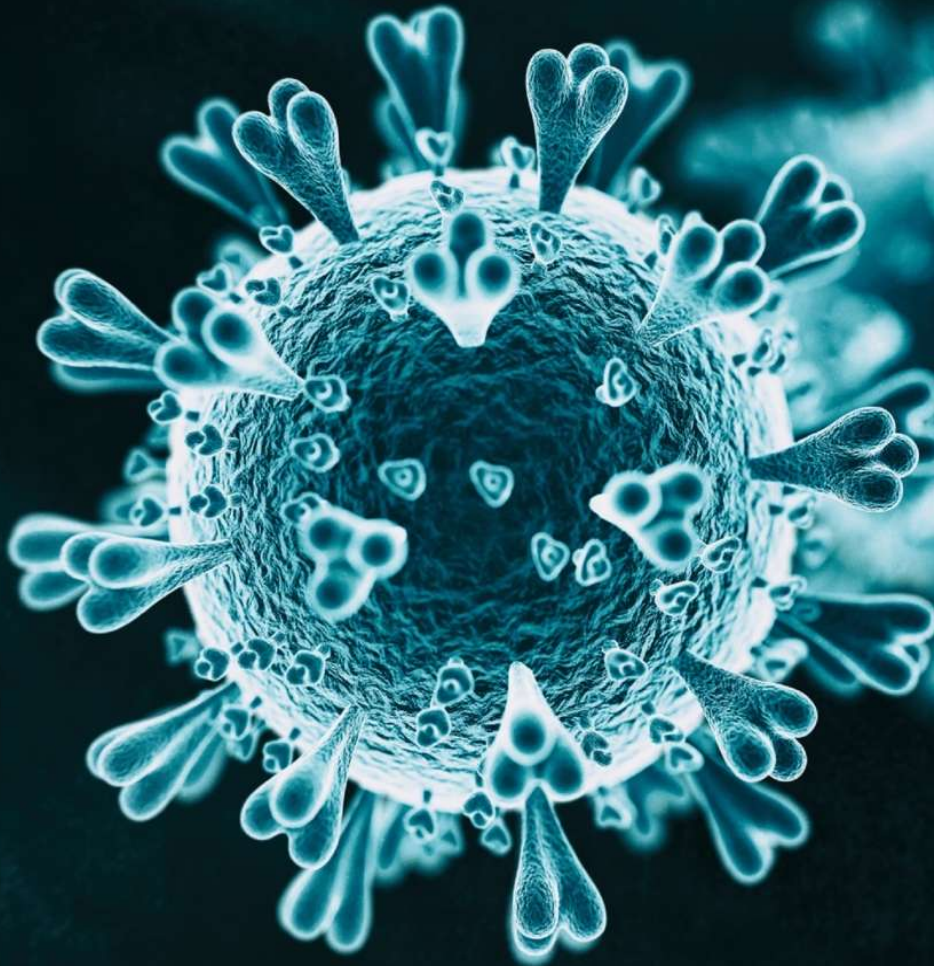
The 15-minute city
Paris.
Paris En Commun

O QUE É UMA CIDADE DE 15 MINUTOS?





COVID19 > A new urban narrative



What kind of city do we want to live in?

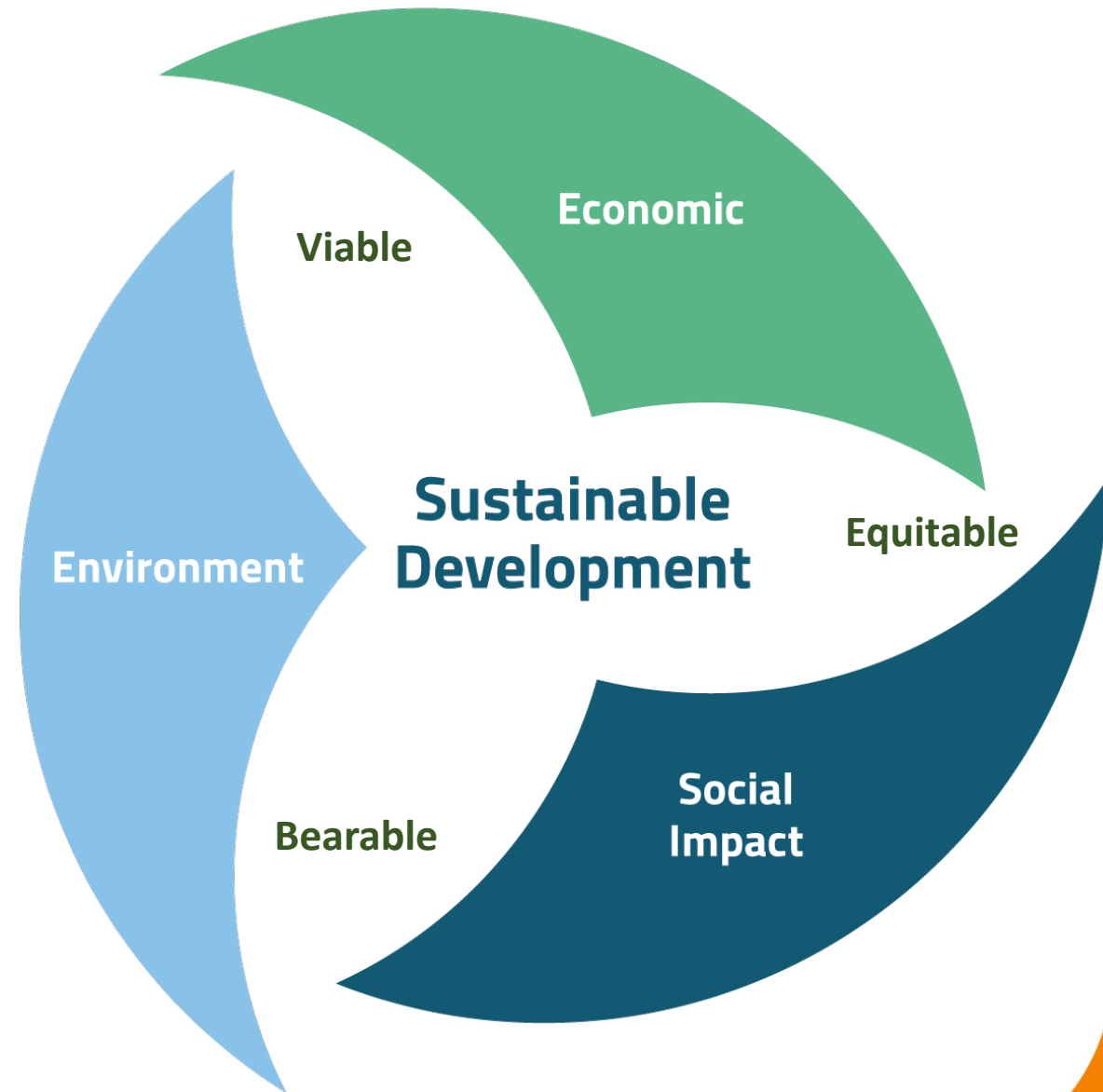


What kind of city do we want to live in?

Urban common



Common Good



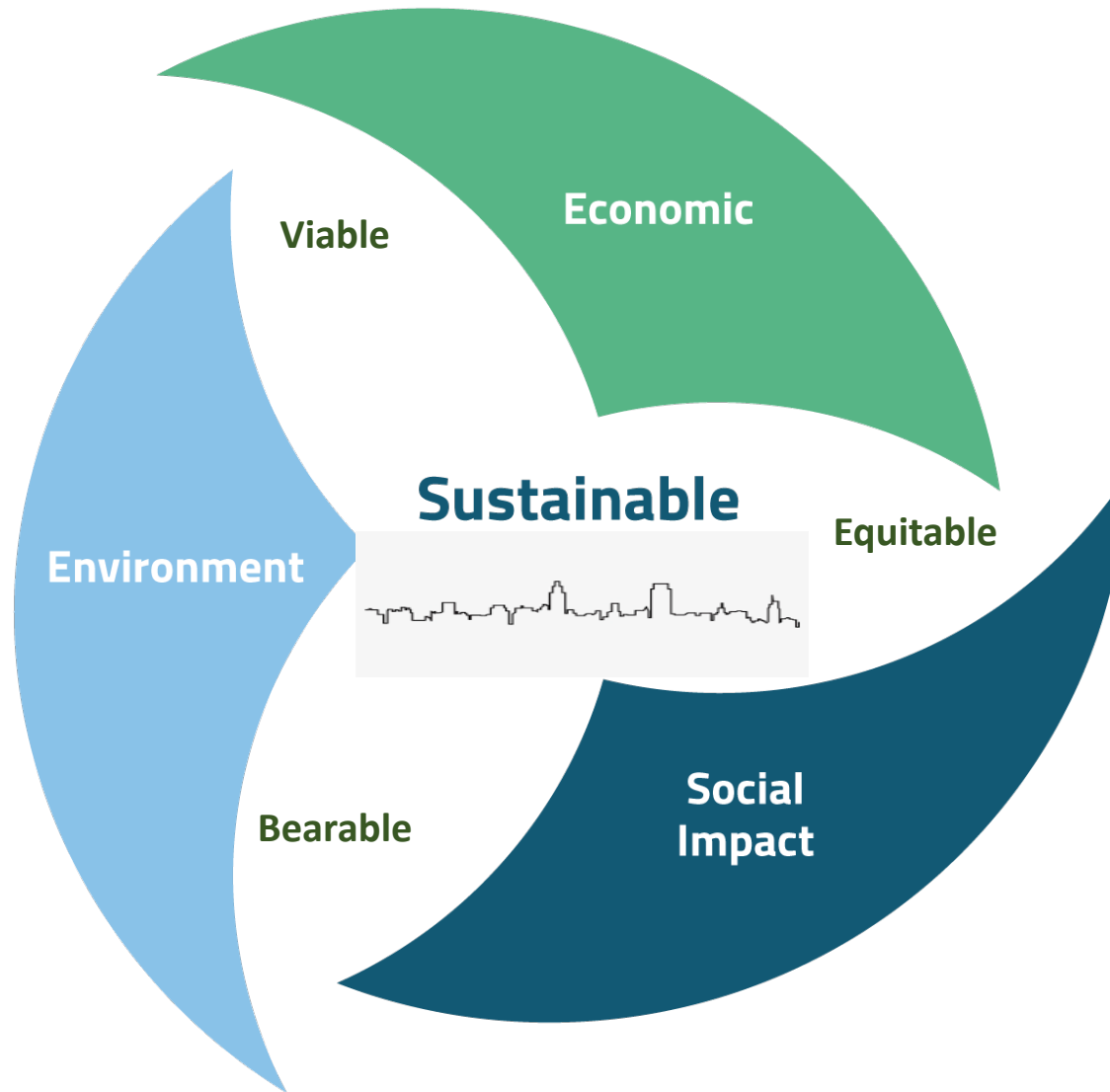
Building an urban narrative

A new mindset



High Quality Societal Life for a Sustainable City

The city of proximities – Take your time



Ecology, Proximity, Solidarity, Empowerment

Chrono-urbanism

A new rhythm of the city

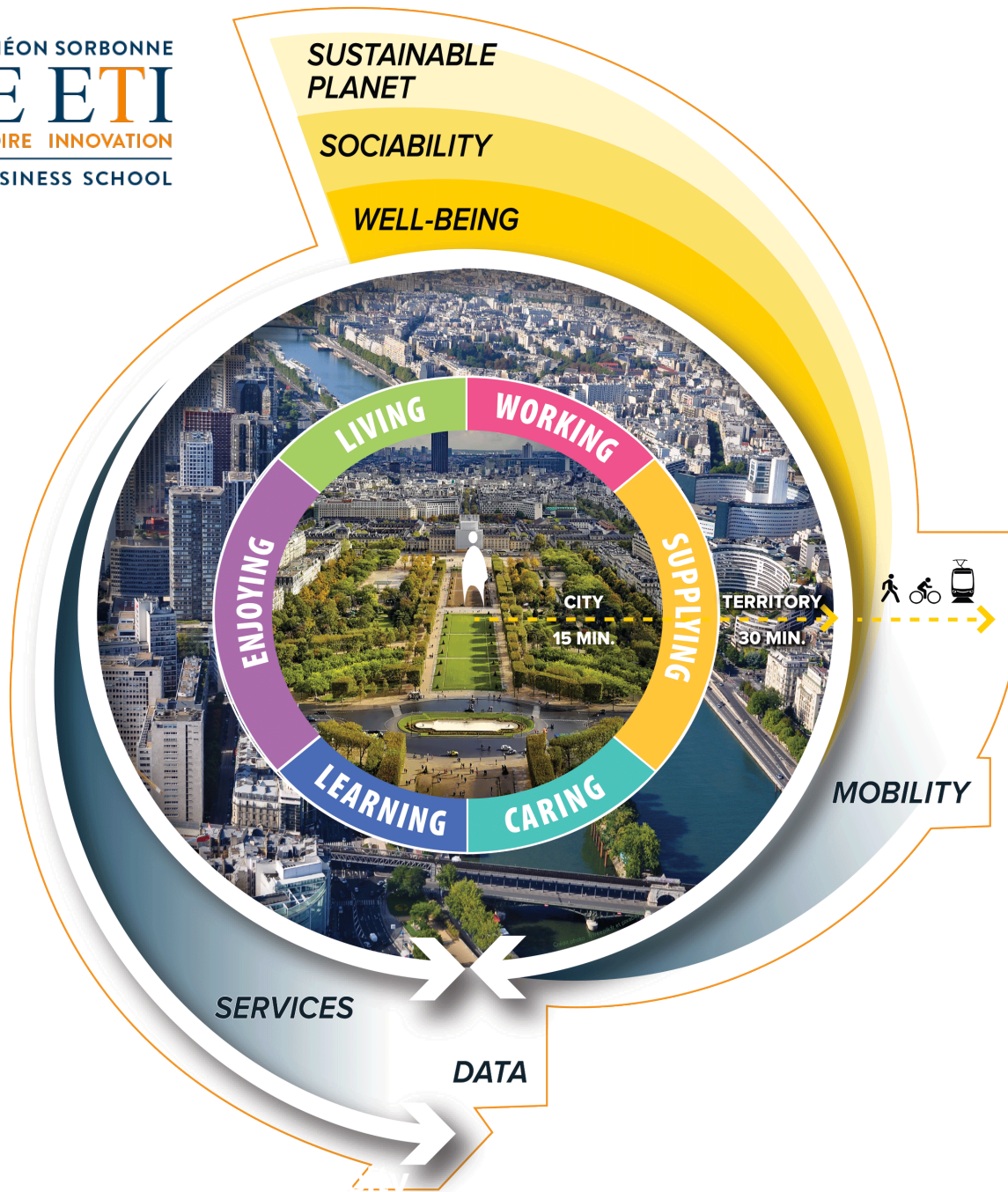
Chronotopia

Multi purpose fonctions

Topophilia

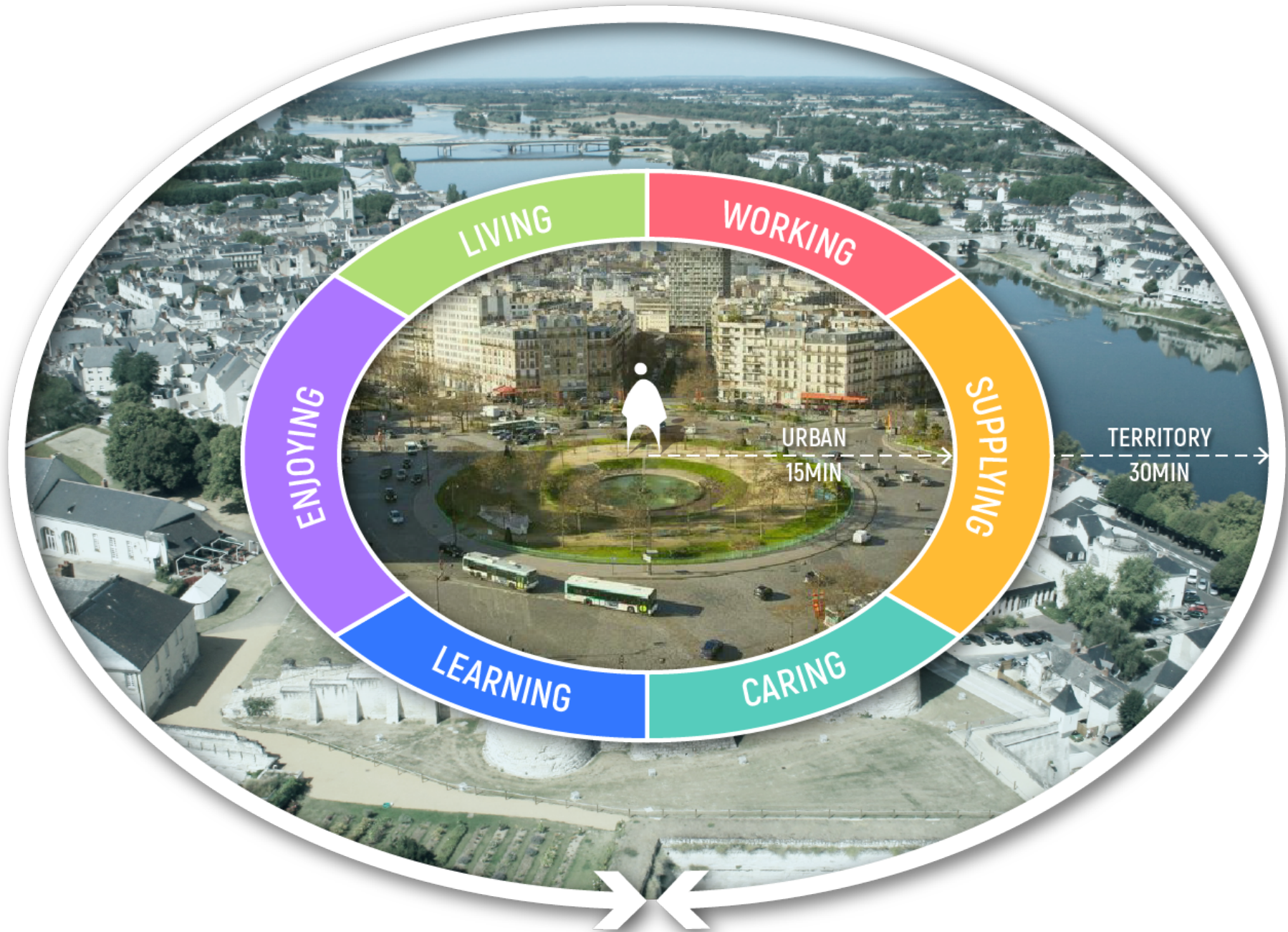
Love of place

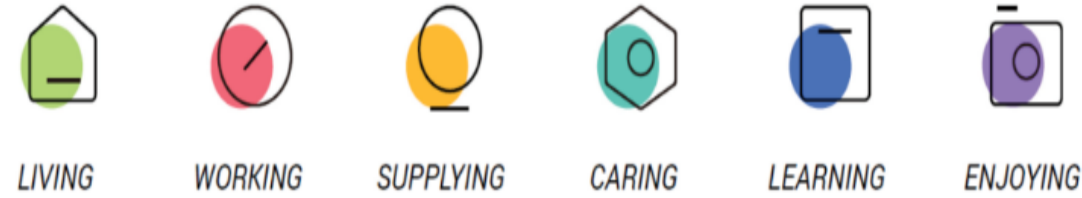
Proximities &
health
For livables
cities



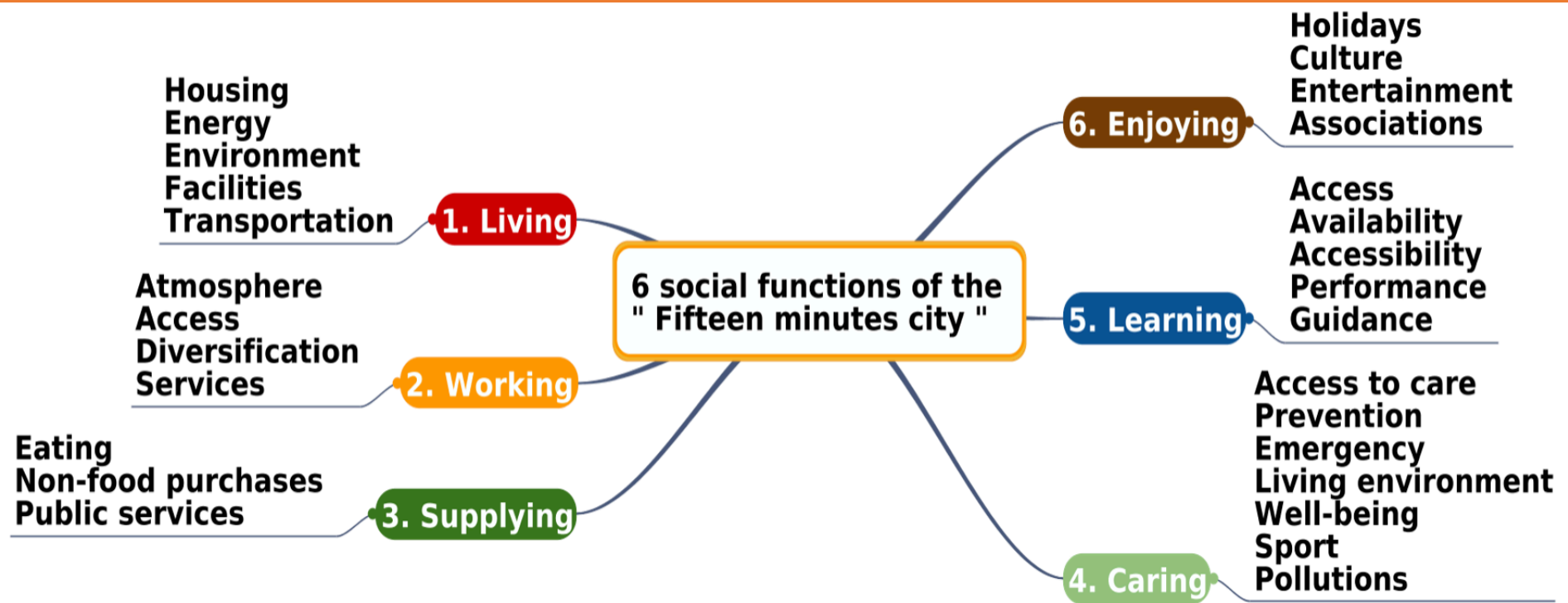
Functional Circularity Human - Oriented Urbanism

High Quality Societal Life

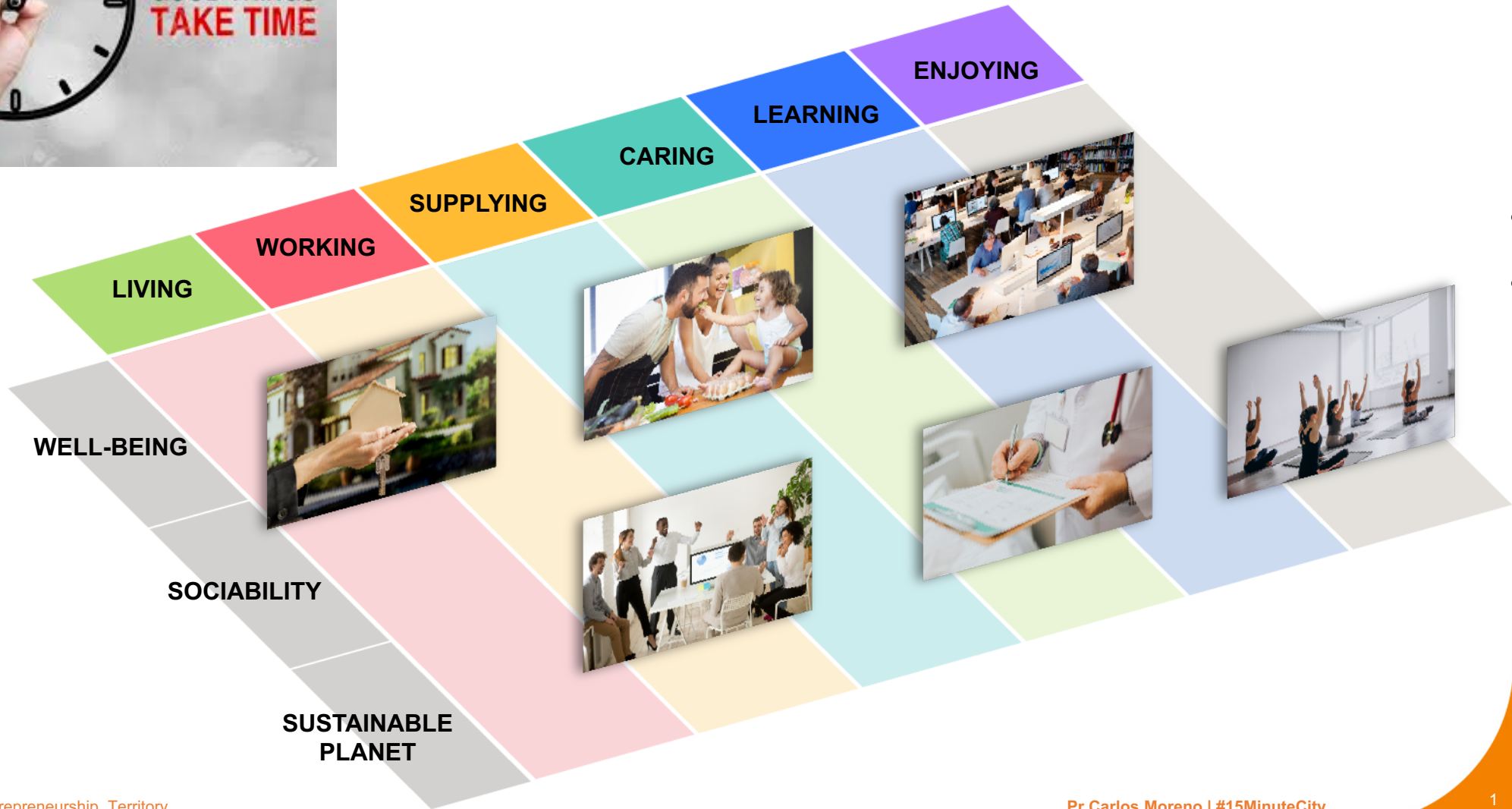


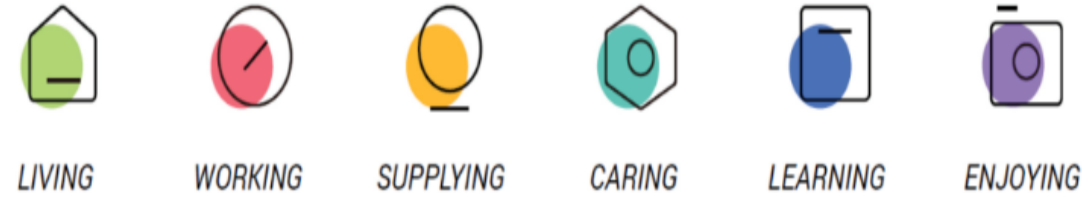


A city ontology: 6 urban social functions



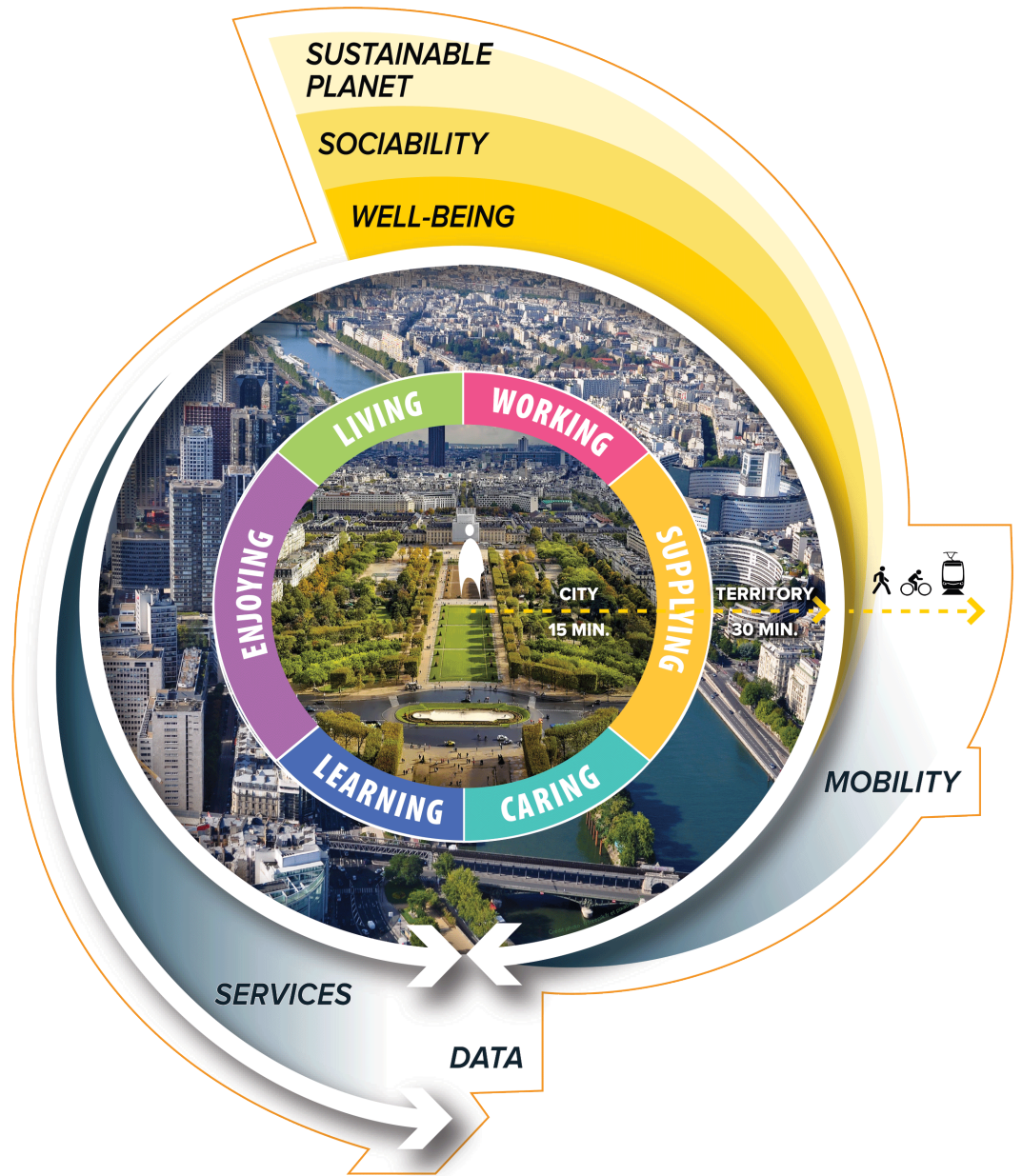
A MIXED USES WITHIN PROXIMITY FOR A HAPPY CITY, A HAPPY LIFE





High Quality Societal living matrix deployment

The indicators: The tools needed to plan the city

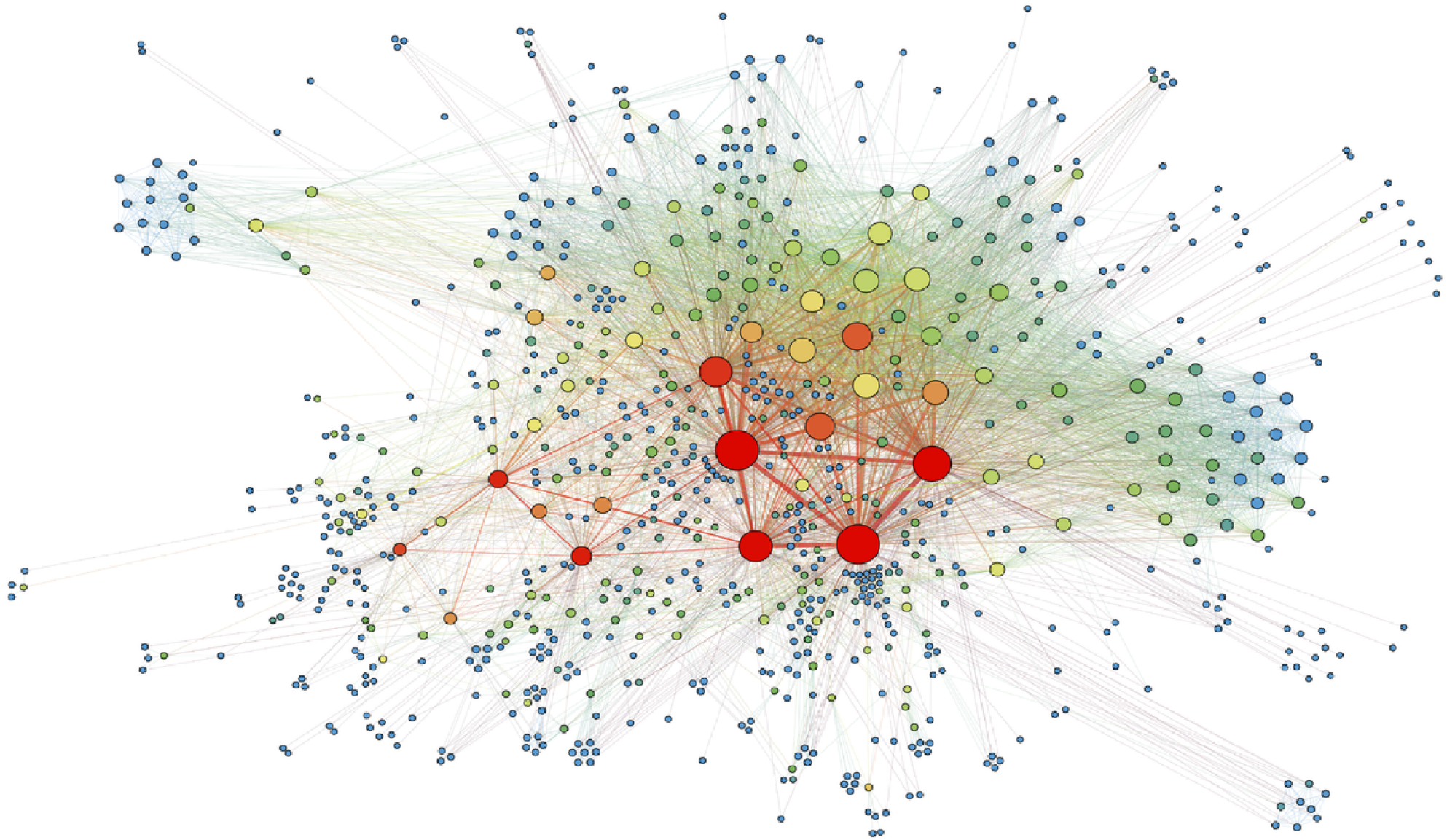




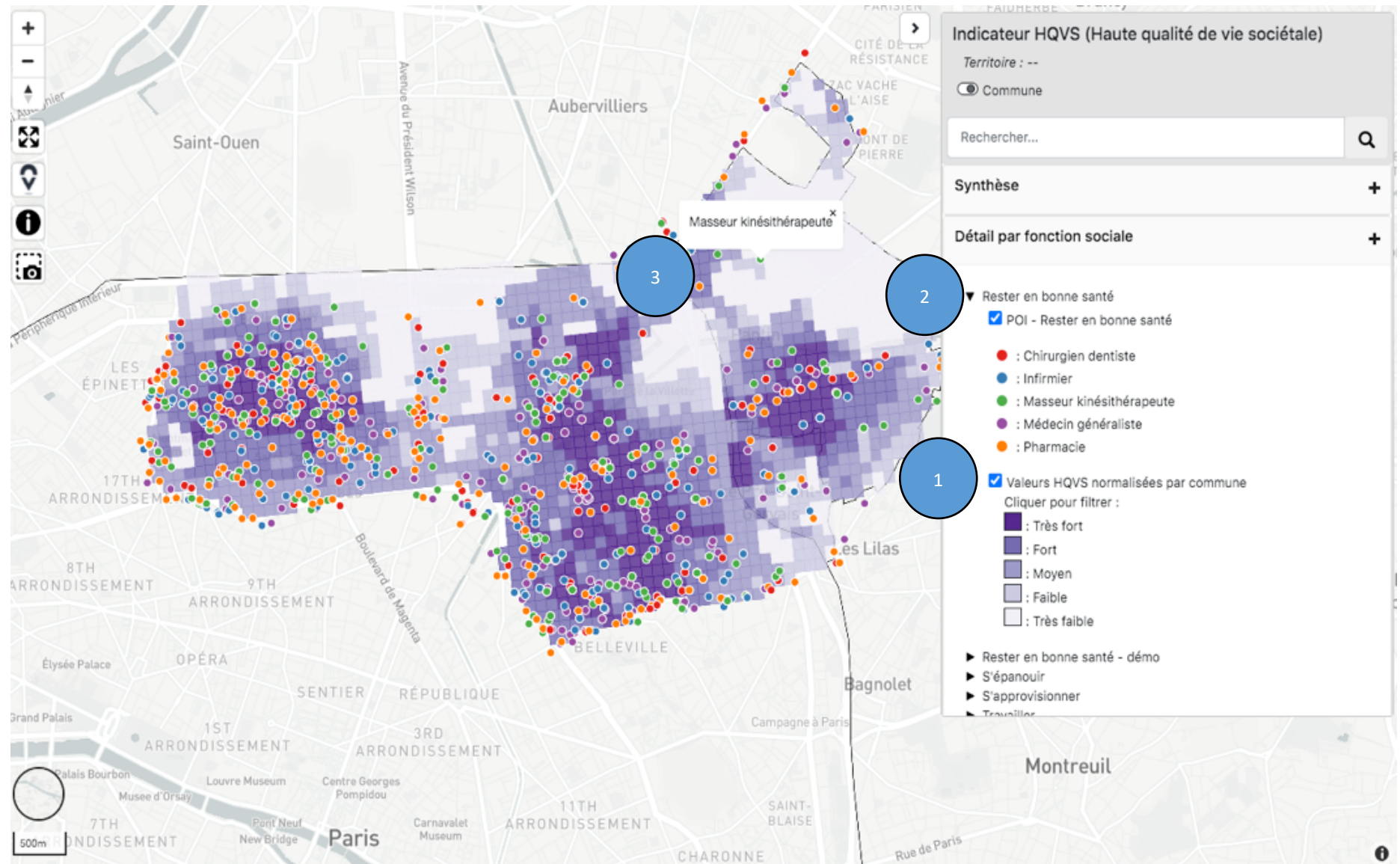
Reinventing a polycentric vicinity

Towards polycentric cities

Implementation of the 15 minute city



From constrained mobility Towards chosen mobility



From Corporate Tower To Ghost Tower



From Corp – Working

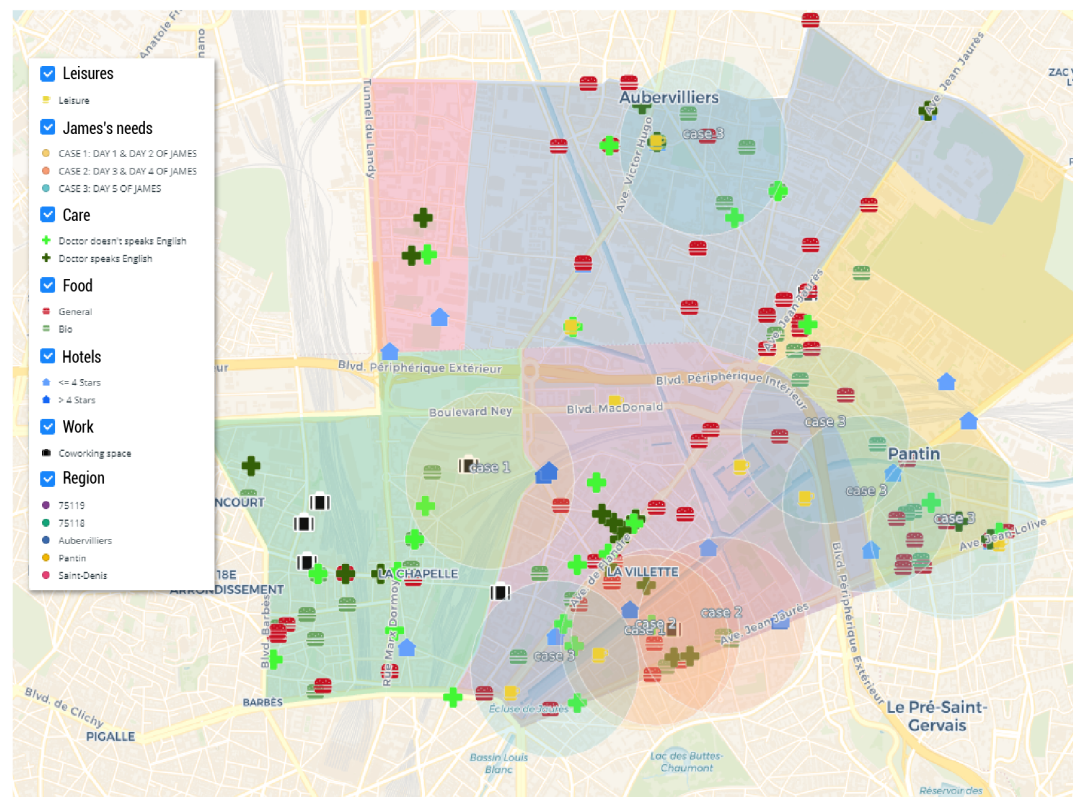


DATA DRIVING MANAGEMENT

Our Proxy Digital Platform

Several development phases leading to urban deployment:

- Visualizing the completeness / incompleteness
- Making a territorial diagnosis
- Assessing assumptions
- Formulating transformation strategies



--- 15 min by foot
--- 15 min by bicycle

ONTOLOGICAL EXPLORATIVE DIGITAL PLATFORM

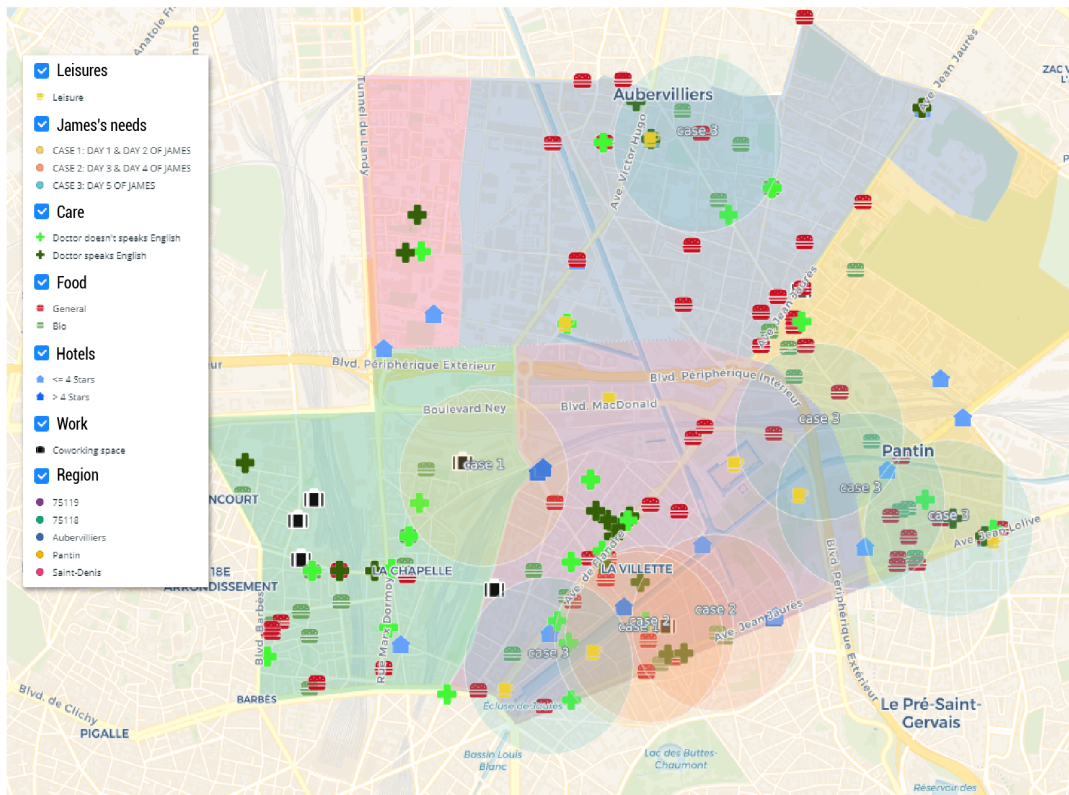


DATA DRIVING MANAGEMENT

Our Proxy Digital Platform

Several development phases leading to urban deployment:

- Visualizing the completeness / incompleteness
- Making a territorial diagnosis
- Assessing assumptions
- Formulating transformation strategies

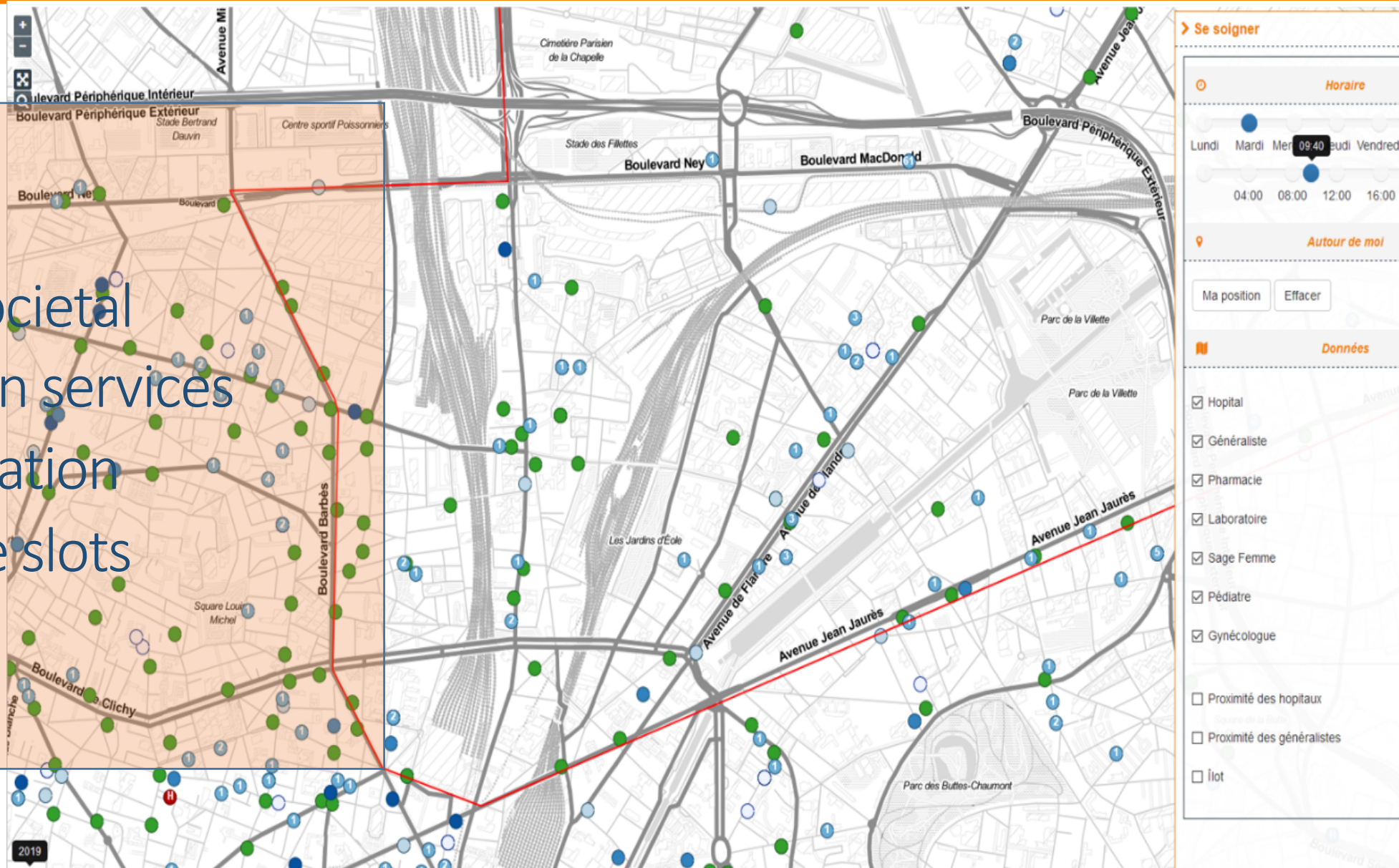


--- 15 min by foot
--- 15 min by bicycle

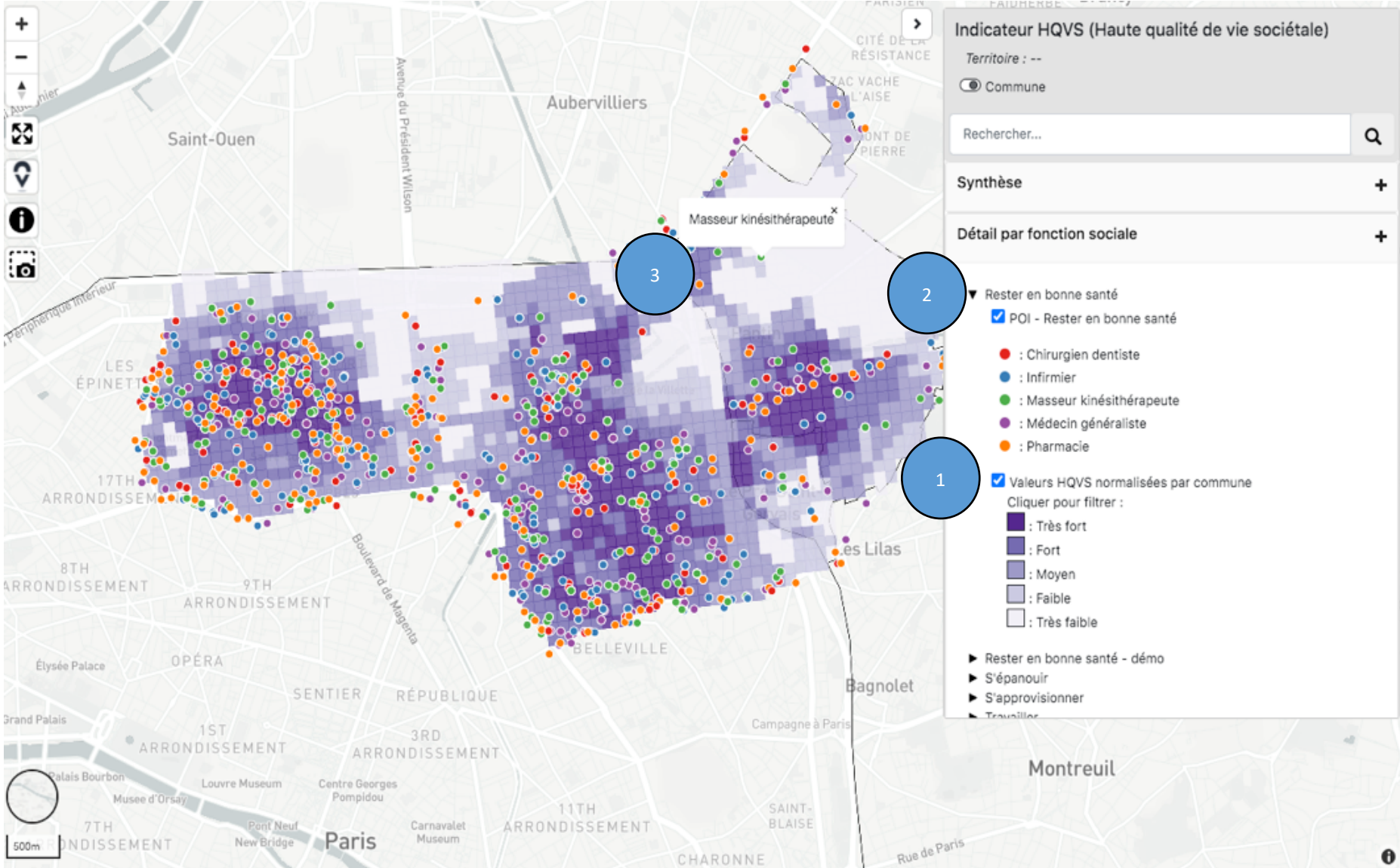
VISUALIZING THE INFORMATION

Geolocated in a digital platform

Care societal
function services
visualization
by time slots

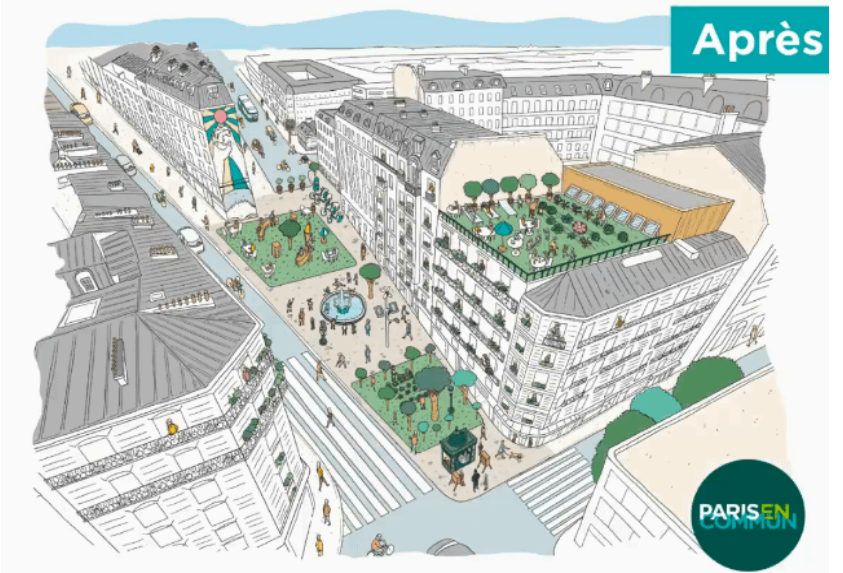
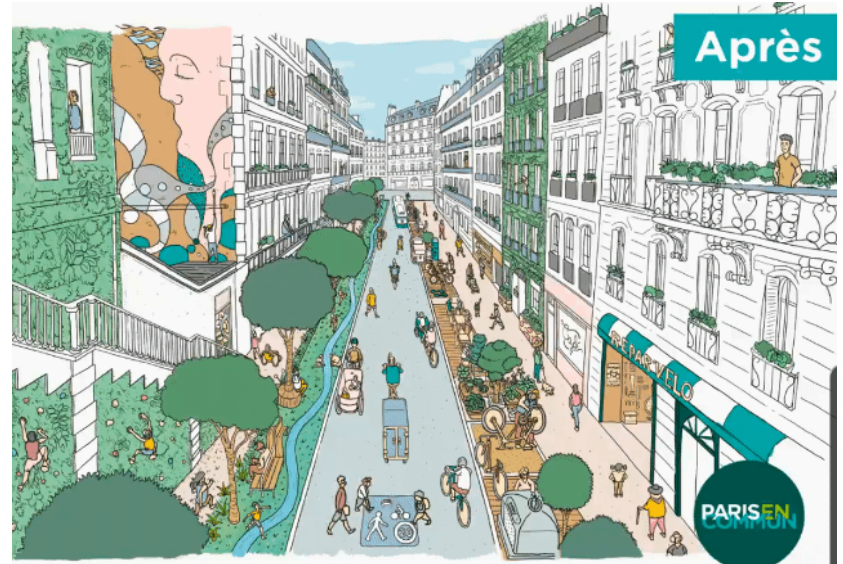
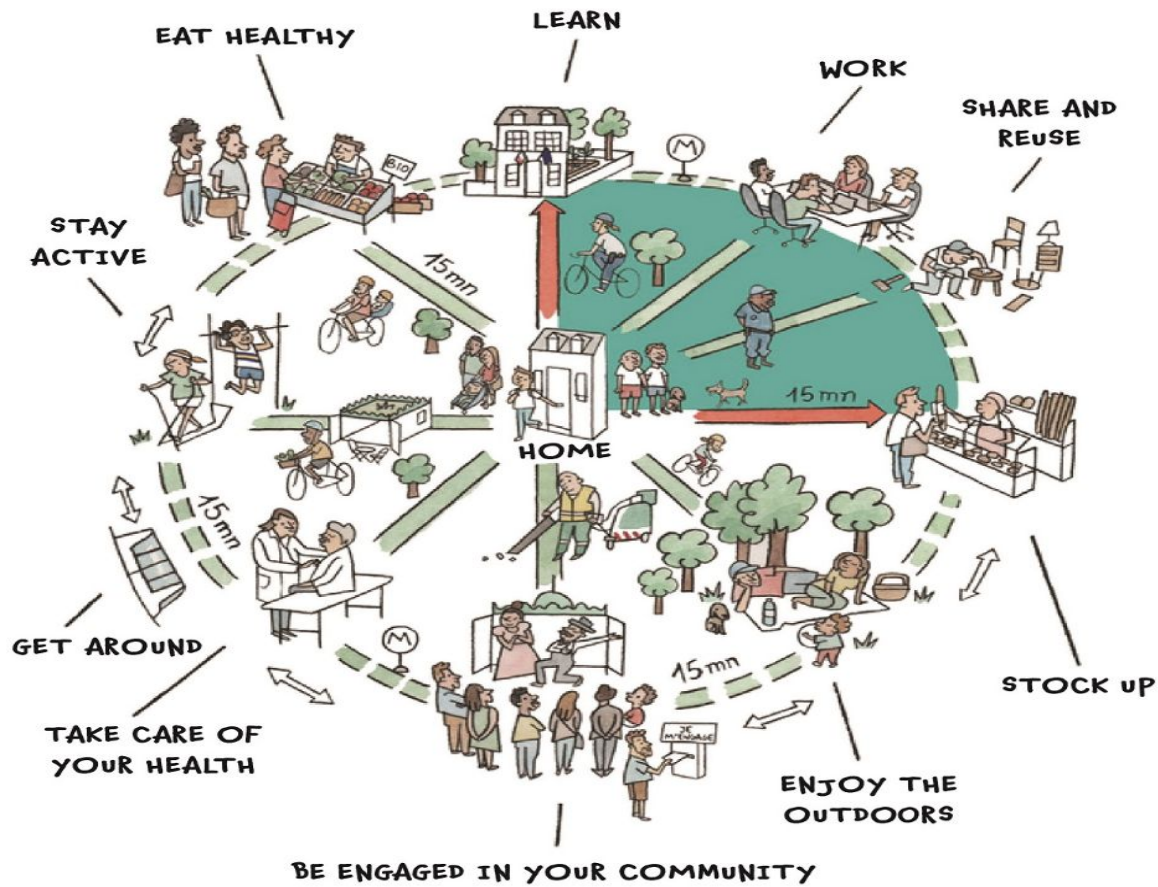


Data driven management



Paris – 15 Minute City

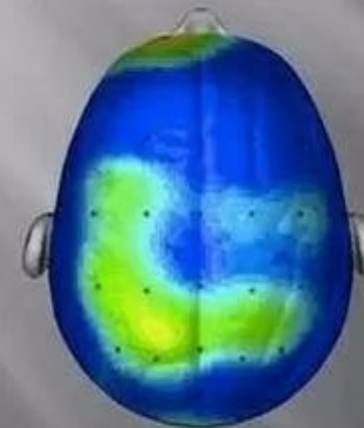
THE 15-MINUTE PARIS



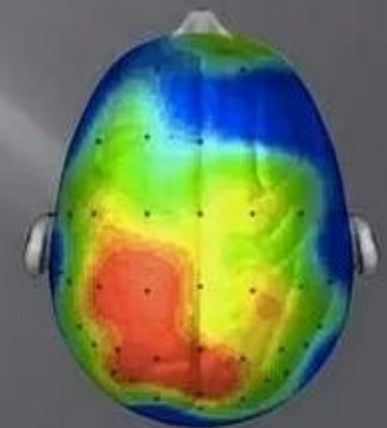
Paris - 15 Minute City Before - After



BRAIN AFTER SITTING
QUIETLY



BRAIN AFTER 20 MINUTE
WALK



Research/scan compliments of Dr. Chuck Hillman University of Illinois

Paris- 15 Minute City

The School, Capital of my district



Vitry sur Seine - 15 Minute Neighbourhood “Futures Possibles” Award



CORONAVIRUS

Progetto aperto al contributo dei cittadini

aa  

Coronavirus, la Fase 2 di Milano: in quartiere con tutto a 15 minuti

Il Comune del capoluogo meneghino lancia il piano per la ripartenza
"Milano 2020, strategia di adattamento"

INTERNATIONAL 15-MINUTE ACTION

C40

PRITZKER ACADEMY

18 CITIES FOR REINVENTING PROXIMITIES

STUDENTS / TEACHERS FOR TRANSFORMING CITIES

24 aprile 2020

Si chiama "Milano 2020, strategia di adattamento" il piano lanciato dal Comune di Milano, aperto al contributo dei cittadini, per gestire la ripartenza. Il documento è stato presentato nel corso di una conferenza stampa in streaming. Il piano punta in generale su una riorganizzazione dei tempi e degli spazi della città: dalla ridefinizione dell'uso delle strade e degli spazi pubblici all'aumento degli spostamenti con la bicicletta e a piedi, alla

riscoperta della dimensione di quartiere, per vivere la città in modo diverso, senza pericolo di

ETI Chair

Entrepreneurship Territory Innovation Chair

with IAE Paris - Sorbonne Business School | Paris 1 Panthéon - Sorbonne



www.chaire-eti.org

carlos.moreno@univ-paris1.fr

@CarlosMorenoFr